



Creating A Single Global Electronic Market

1

2

# ebXML Catalog of Common Business Processes v1.0

3

4

5

Business Process Project Team  
11 May 2001

6

7

8

---

## 1 Status of this Document

9

This Technical Report document has been approved by the Business Process Project Team and has been accepted by the ebXML Plenary.

10

11

This document contains foundation material based on ebXML Technical Specifications or Reports.

12

Distribution of this document is unlimited.

13

The document formatting is based on the Internet Society's Standard RFC format.

14

This version:

15

<http://www.ebxml.org/specs/bpPROC.pdf>

16

17

Latest version:

18

<http://www.ebxml.org/specs/bpPROC.pdf>

19

---

## 20 2 ebXML Participants

21 We would like to recognise the following for their significant participation to the development of this  
22 document.

### 23 **Business Process Project Team Co-Leads:**

24 Paul Levine, Telcordia  
25 Marcia McLure, McLure-Moynihan, Inc.

### 26 **Editors:**

27 Nita Sharma, Netfish Technologies  
28 David Welsh, Nordstrom.com

### 29 **Contributors:**

30 Jim Clark, I.C.O.T.  
31 David Connelly, OAG  
32 Charles Fineman, Arzoon  
33 Stephan de Jong, Philips International B.V.  
34 Brian Hayes, Commerce One  
35 David Welsh, Nordstrom.com  
36 Rebecca Read, Mercator  
37 William McCarthy, Michigan State University  
38 Michael Rowell, OAG  
39 Nita Sharma, Netfish Technologies  
40 Jennifer Loveridge, Nordstrom.com  
41 AIAG Members  
42 ASC X12 EWG Members  
43

---

44 **3 Table of Contents**

45 **1 Status of this Document..... 1**

46 **2 ebXML Participants..... 2**

47 **3 Table of Contents..... 3**

48 **4 Introduction..... 4**

49 4.1 Summary of Contents of Document ..... 4

50 4.2 Audience..... 4

51 **5 Design Objective..... 4**

52 5.1 Objectives ..... 4

53 5.2 Goals ..... 4

54 **6 Business Process Catalog Use Cases..... 5**

55 6.1 Discovery of Business Processes..... 5

56 6.2 Cross References ..... 5

57 6.3 Support Business Process Contextual Category..... 5

58 6.4 Discovery of Core Components..... 5

59 6.5 Support Business Process Modeling..... 6

60 **7 The Common Business Process Catalog Overview..... 6**

61 7.1 What is a Common Business Process..... 6

62 7.2 Catalog Categorization Scheme..... 7

63 7.3 Meta data for Cross Reference table..... 8

64 7.4 Methodology for Building the Catalog..... 8

65 7.5 Registry and Repository for the Catalog ..... 9

66 **8 Catalog of Business Processes..... 11**

67 8.1 Catalog of Common Business Processes with Cross References ..... 11

68 8.2 Catalog of Industry Specific Business Processes with Cross References ..... 48

69 8.3 Description of Common Business Processes ..... 53

70 8.4 REA Table ..... 54

71 8.5 Transactional View..... 56

72 **9 References..... 60**

73 **10 Disclaimer..... 60**

74 **11 Contact Information..... 60**

75 **Figures**

76 Figure 6.5-1, Business Process Editor and Business Process Catalog..... 6

77 Figure 7.1-1, Business Process Model Reuse..... 7

78 Figure 7.2-1, Graphical representation of the Porter Value Chain ..... 8

79 Figure 7.5-1, Common Business Process Development ..... 9

80

---

## 81 4 Introduction

### 82 4.1 Summary of Contents of Document

83 This document puts together an initial list of common business process names, generic in nature  
84 that can be used across various industries. This includes business processes with cross  
85 references across common industry standards; including RosettaNet PIPs, X12, EDIFACT,  
86 JIPDEC/CII(Center for information of Industry of JAPAN Information Processing Development  
87 Center), OAG BOD, xCBL (CommerceOne). Identification of this catalog of common business  
88 processes were influenced by various industry initiatives like RosettaNet, EIDX, CPFR, EIAJ, OAG  
89 etc. This document also illustrates how to catalog business processes.

90 A Business Process consists of a set of business collaborations, which is itself composed of one or  
91 more business transactions as defined by the UN/CEFACT Modeling Methodology (UMM)  
92 Business Transaction View (BTV). The behavioral aspects of a business process are defined via  
93 the UMM Metamodel.

94 The keywords MUST, MUST NOT, REQUIRED, SHALL, SHALL NOT, SHOULD, SHOULD NOT,  
95 RECOMMENDED, MAY, and OPTIONAL, when they appear in this document, are to be  
96 interpreted as described in RFC 2119 [Bra97].

### 97 4.2 Audience

98 The target audiences for this document includes business staff of both information and technical  
99 background and specific business focus areas wishing to relate their electronic trading activities in  
100 a consistent pattern to the general ebXML trading community.

---

## 101 5 Design Objective

### 102 5.1 Objectives

103 The primary objective of this catalog is to provide the e-business community with a list of business  
104 process names and related information that are independent of any industry specifics. The generic  
105 nature of these business processes enables one to reuse them with specific context and business  
106 rules within different vertical industries. Common business processes have been grouped under  
107 various classifications. Another objective of this catalog is to provide the corresponding references  
108 to business documents and business processes defined across various industry standards.

### 109 5.2 Goals

110 The goals of the list of common business processes are:

- 111 ■ This list will drive the creation of templates for each of these business processes that can be  
112 reused across industries.
- 113 ■ These processes are going to be the basis for discovery and definition of collaboration  
114 patterns.

- 115       ■ This catalog can evolve to become a global, industry neutral catalog of commonly used  
116 processes with refinement and contribution from all sectors of the industries.

---

## 117 6 Business Process Catalog Use Cases

### 118 6.1 Discovery of Business Processes

119       Given ebXML community growth, independent of industry sector, business processes commonly  
120 used within industry will be developed according to the UMM and will be available for re-use via  
121 business process catalogs hosted in ebXML compliant registries/repositories also called Business  
122 Libraries. The catalog of common business processes can be used for the discovery of reusable  
123 business processes in conjunction with Worksheets/Guidelines. Please refer to the figure 7.1.1.  
124 The catalog supports discovering and comparing business processes in the early stages of  
125 business process analysis. Common business processes in the catalog have associated process  
126 specifications that include core components specific to it. Business process specification is a  
127 declaration of the partners, roles, collaborations, choreography and business document exchanges  
128 that make up a business process. A catalog of common business processes can be used as the  
129 business process specifications for building business document(s) for similar business processes  
130 within a specific context.

### 131 6.2 Cross References

132       This catalog provides informative cross-references to non-ebXML business processes and  
133 business documents defined by electronic business standards organizations around the world. The  
134 catalog can also be extended to include other industry specific common electronic trading  
135 documents or business process conventions. This catalog will be stored in the business library.  
136 When business process models/specifications are inserted into a business library they should be  
137 cross-referenced against other industry standards.

### 138 6.3 Support Business Process Contextual Category

139       Business Process is one of the contexts defined by the ebXML Core Components classification  
140 scheme<sup>1</sup>. A Business Process context relies on a classification derived from the list of common  
141 business processes. The main reason to use context is to encourage reuse of core components,  
142 and with it common documents and ultimately common business processes. By working from a  
143 common set of core components and agreeing on the context for business processes, trading  
144 partners can better understand what business information is required to be part of a Business  
145 Process. The contextual categories, identified by ebXML Core Components, map to existing  
146 elements and attributes within a business process model complying to the UMM. For example, the  
147 contextual Category "Process" maps to the Metamodel elements BusinessProcess, ProcessArea,  
148 and BusinessArea.

### 149 6.4 Discovery of Core Components

150       The catalog of common business processes is useful for discovery and analysis of core  
151 components that will be used as the building blocks for deriving business documents within a given  
152 context. This can be done by checking all sources of documents listed and cross-referenced on the  
153 Common Business Process Catalog to identify a document that may have the information needed

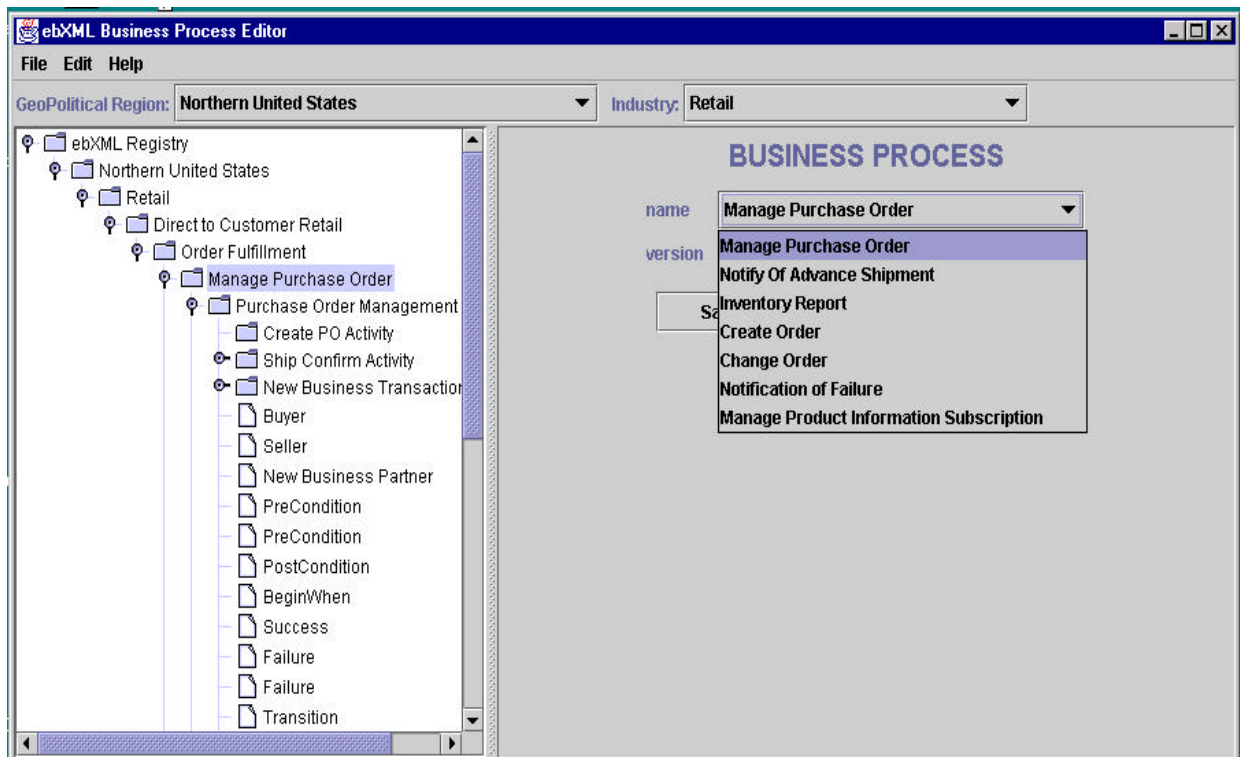
---

<sup>1</sup> see [ebCNTXT] for additional information on context

154 (which may be EDIFACT, X12, xCBL, RosettaNet PIPs, CII, OAG BODs). There may be an  
 155 existing document, which is similar and could be evaluated. Next identify if the document  
 156 components meet the business requirements. If so, then these components can be reused.

157 **6.5 Support Business Process Modeling**

158 Business processes are modeled by the information specified in the UN/CEFACT Modeling  
 159 Methodology (UMM) Metamodel. This metamodel specifies all the information that needs to be  
 160 captured during the business modeling of an electronic commerce based business process. With the  
 161 expansive potential of the UMM in all of it's "intricate depth of detail", people are advised to use tools  
 162 to help them model their business processes; and thus facilitate business analysis activities.  
 163



164  
 165  
 166

Figure 6.5-1, Business Process Editor and Business Process Catalog

167 When business experts model a business process using a "Business Process Editor" (BPE) tool  
 168 which could use the catalog of common business processes to discover existing business process;  
 169 ie. via a drop down list. A BPE would work with ebXML compliant registries/repositories. For further  
 170 reference, see Business Process and Business Document Analysis Definitions.

---

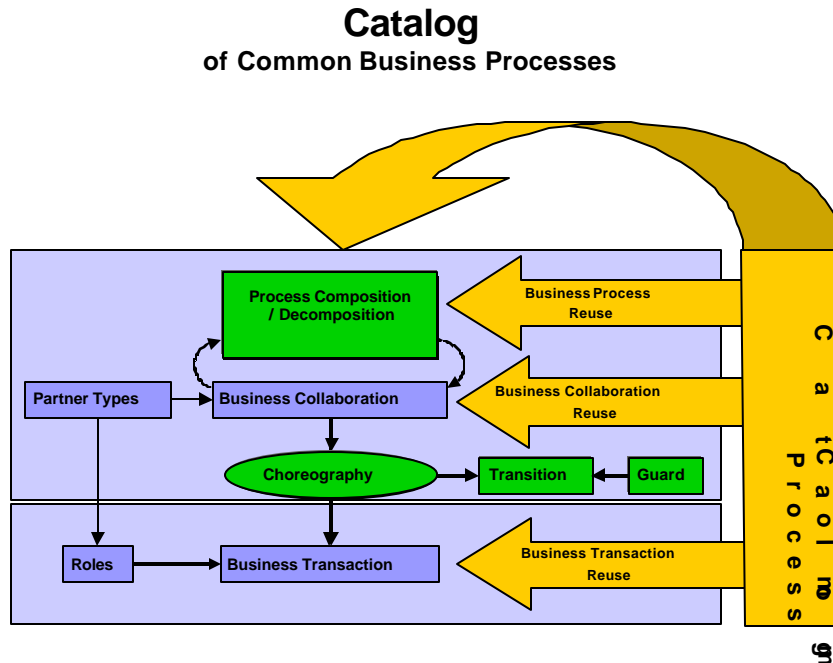
171 **7 The Common Business Process Catalog Overview**

172 **7.1 What is a Common Business Process**

173 Common Business Processes are industry neutral and re-usable business processes. See Figure  
 174 7.1-1. Various components of a common business process specification can be re-used to create  
 175 new business processes. Re-use will typically occur at the business process, business

176 collaboration, business transaction, and business document model components. Refer to section  
 177 8.4 for a more detailed example.

178 **Figure 7.1-1 has been revised to show the role of the Catalog of Common Business**  
 179 **Processes**



180  
 181 Figure 7.1-1, Business Process Model Reuse

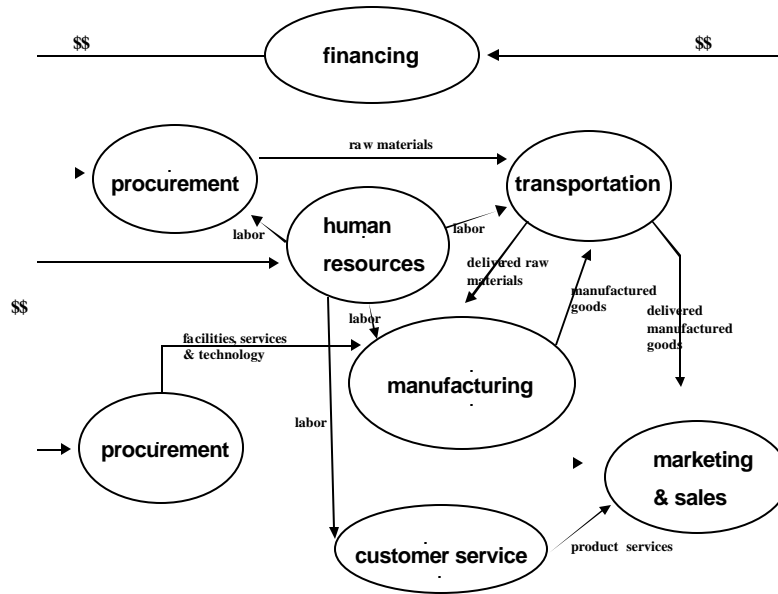
182 **7.2 Catalog Categorization Scheme**

183 The catalog's categorization scheme is based upon an *enterprise value chain*, the concept  
 184 pioneered by Michael Porter<sup>2</sup>, following review of several other reference models. A value chain is  
 185 a purposeful network of business processes designed to cumulatively transform a set of process  
 186 inputs into an output of greater value to the enterprise's set of customers. Porter's Value Chain  
 187 stages are illustrated in Figure 7.2 below as resource flows which progress from left to right in  
 188 transforming inputs as labor, capital, and goods into components of a business's final product.  
 189 Figure 7.2 illustrates the linked major events within each process that consume business inputs  
 190 and produce business outputs.

191 Each business process in the Catalog of Common Business Processes is at the most general level  
 192 represented by a *normative category* of enterprise activities as procurement, financing, and  
 193 manufacturing. Normative category processes can be broken into normative sub-categories for  
 194 better business discovery.

195 Figure 7.2-1 has been revised to show the normative categories in clearer font.

<sup>2</sup> Michael E. Porter, *Competitive Advantage : Creating and Sustaining Superior Performance*, 1998, Harvard Business School Press



196  
197

Figure 7.2-1, Graphical representation of the Porter Value Chain

198 **7.3 Meta data for Cross Reference table**

199 The various components of this cross-reference of common business processes table:

200 **Common Business Processes** – A business process describes in detail how trading partners  
201 take on roles, relationships and responsibilities to facilitate exchange of information. Common  
202 Business processes are identified as commonly used across various organizations, industries or  
203 other business entities.

204 **Normative Category** – Built from components of a Porter Value Chain.

205 **Normative Sub-category** – Decomposition of the Porter Component into logical sub groups

206 **EDIFACT/X12/CII/OAG BOD/xCBL** – Common industry standards used as a cross-reference, by  
207 identifying their specific equivalent business documents commonly used today.

208 **RosettaNet PIP** – Common business processes cross-referenced to business transactions as  
209 specified by RosettaNet Partner Interface Processes™ (PIPs™) which define business processes  
210 between trading partners.

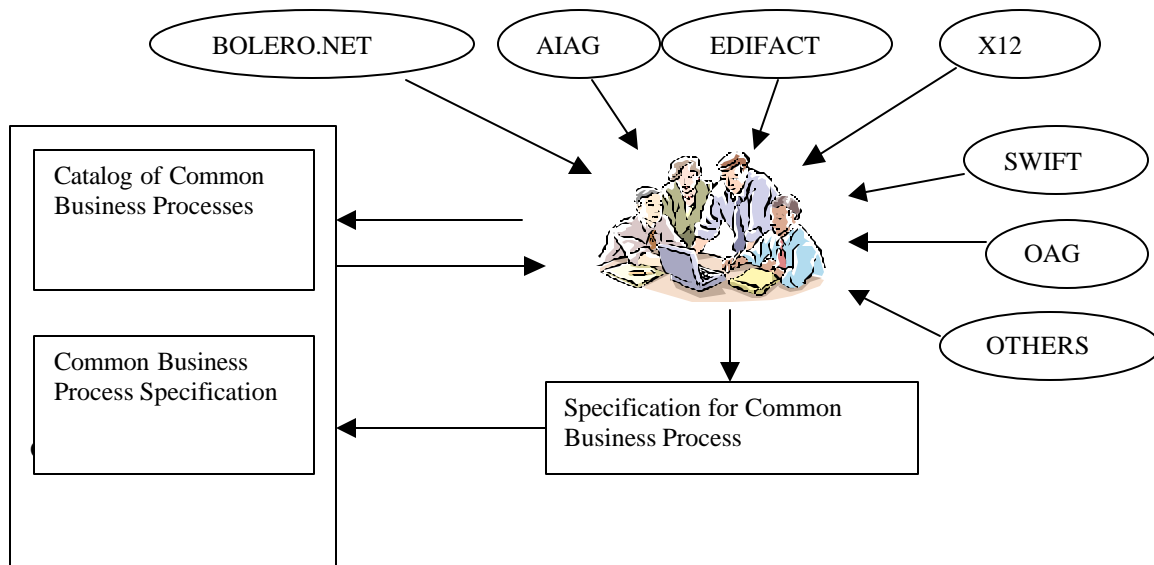
211 **7.4 Methodology for Building the Industry-Neutral Catalog**

212 With participation of business domain experts from major business communities and industry  
213 standards organizations, there was consensus gathering with respect to current common practices  
214 involved with electronic business trading. A comprehensive and consistent analysis needs to be  
215 conducted for each “discovered” component by a domain-neutral technical assessment teams, to  
216 further ensure cross-domain harmonization.



217 7.5 Registry and Repository for the Catalog

218 The catalog of common business process names and associated cross-reference MAY be  
 219 stored in an ebXML Business Library and MAY be stored in other business libraries. There  
 220 can only be one catalog per ebXML registry. The Common Business Process catalog  
 221 owner needs to be an accredited global standards body such as UN/CEFACT, ITU, ISO.  
 222 The Catalog's main service is to be shared by the global community. The catalog of  
 223 business process will be accessed through its registry interface. Business domain experts  
 224 within UN/CEFACT, perhaps also partnered with industry interest groups, need to define  
 225 and maintain each detailed specification for each common business process. The  
 226 classification/retrieval method for accessing the catalog will be defined in a  
 227 classification/retrieval mechanism.  
 228



229 Figure 7.5-1, Common Business Process Development  
 230

231 In performing ebXML analysis activities to a business process, either establishing new business  
 232 processes or re-engineering existing ebXML business processes, it will be necessary to persist the  
 233 business process model. Business process analysis activities may call for many forms of  
 234 supporting information to aid in the analysis. It is desirable to maintain relationships with supporting  
 235 information and the ebXML business process model. Examples of supporting information include  
 236 technical drawings, design images and sound tracks in digital format.

237 Resource Description Framework (RDF) or XMI can be used to persist a Business Process model  
 238 in it's complete UMM form, including other associated information resources that the business  
 239 users feel are significant to be kept associated with the business process model. A modeled  
 240 business process and supporting information registered in a catalog makes it accessible via its  
 241 reuseable components/artifacts.

242 Storing a modeled business process into the catalog needs to result in the business process to be  
 243 accessible via its reusable components/artifacts. Reusability can occur at various levels in the  
 244 UMM, however, reuse of artifact will likely be found at the business process, binary collaboration,  
 245 business transaction, and document levels of the UMM. Experience today strongly suggests that  
 246 reusability will often occur at the business transaction and document levels when compared to  
 247 traditional EDI.

- 248 ebXML compliant registry's should satisfy the following Catalog of Common Business Process  
249 service requirements towards business analysis activities :
- 250 A standard mechanism for registering catalogs so the catalog of common business processes can  
251 be shared.
- 252 A standard mechanism for registering and storing *Business Process and Information models* (in  
253 RDF or XML) so that business processes may be discovered.
- 254

## 8 Catalog of Business Processes

255

256 This section contains several tables that represent various aspects of cataloging business processes. Each business process [should  
 257 represent/represents] a logically complete economic action or commitment. Some are atomic binary relationships that would be used as a Business  
 258 Transaction within a Binary Collaboration; some may encompass several transactions, and therefore would be used within ebXML as a higher-level  
 259 nested Collaboration.

260

261

262 The *Section 8.1* identifies common business processes (used and being developed) that may or may not have traditional EDI documents available,  
 263 which do fit into the Value Chain classification schema. Here we take a Value Chain approach of classifying business processes, but recognize there  
 264 are many business and regulatory domains that may not appear immediately classified in the Value Chain classification. *Section 8.2* shows an  
 265 example of the Insurance Industry, which can also be classified by its common business processes but cannot be categorized under the Value Chain  
 266 approach. So business processes may be categorized by the Porter's Value Chain or other appropriate categorization scheme, perhaps specific to an  
 267 industry or company. *Section 8.3* contains the definitions of the common business process as identified in *Section 8.1*. *Section 8.4* is the REA  
 268 representation of the common business processes. To make this entire structure more concrete in the mind of catalog users, an illustrative table has  
 269 been included in this document. The illustrative table portrays: (1) each normative category, (2) its possible sub-categories, (3) its normal types of  
 270 resource inflows and outflows, (4) its major types of events that effect those flows, and (5) the normal types of agents and roles for those processes.

### 8.1 Catalog of Common Business Processes with Cross References

272 This section contains a list of common business process names and a cross-reference to various standards industry specific business process and  
 273 business document names.

274 **Note: xCBL column removed from the following table**

Common Business Processes	Normative Category	Normative Sub Category	EDIFACT including sub-sets*	X12 including sub-set*	RosettaNet Partner Interface Process	CII (HWSW001A)	OAG BODs
Notification Of Failure	Administration	Failure Notification	APERAK		PIP0A1		(CONFIRM BOD)

\* If document name not found in the latest official EDIFACT directory, it is a subset.

Common Business Processes	Normative Category	Normative Sub Category	EDIFACT including sub-sets*	X12 including sub-set*	RosettaNet Partner Interface Process	CI (HWSW001A)	OAG BODs
<b>Failure</b>		<b>Notification</b>					
<b>Manage Product Information Subscription</b>	<b>Administration</b>	<b>Product Service Review</b>			<b>PIP1B1</b>		<b>065_update_productreq_004,</b> <b>067_cancel_productreq_004</b> <b>063_get_prodavail_003</b> <b>064_show_prodavail_003</b> <b>137_sync_pricelist_001</b> <b>128_sync_catalog_001</b>
<b>Request/Verify Account Info</b>							
<b>Delete Party Profile</b>			<b>TUPREQ</b>				
<b>Request Account Setup</b>	<b>Administration</b>	<b>Party Profile</b>	<b>PARTIN</b>	<b>838</b>	<b>PIP1A1</b>		<b>007_sync_customer_004</b> <b>008_sync_supplier_004</b> <b>(plans to use ebXML tpaML based work in future)</b>
<b>Maintain Account</b>	<b>Administration</b>	<b>Party Profile</b>	<b>PARTIN</b>	<b>838</b>	<b>PIP1A2</b>		<b>007_sync_customer_004</b> <b>008_sync_supplier_004</b>

Common Business Processes	Normative Category	Normative Sub Category	EDIFACT including sub-sets*	X12 including sub-set*	RosettaNet Partner Interface Process	CI (HWSW001A)	OAG BODs
							(plans to use ebXML tpaML based work in future)
Request Credit Reference	Administration	Party Profile			PIP1A3		025_get_credit_003, 026_show_credit_003, 027_update_credit_003
Maintain Agreement	Administration	Party Agreement					007_sync_customer_004, 008_sync_supplier_004
Request Quote / Response	Procurement Management	Pre-Order and Quote	REQOTE, QUOTES	840, 843	PIP3A1	0310, 0311	152_sync_quote_002, 159_get_quote_002, 154_change_quote_002, 156_response_quote_002
Query Price And Availability	Procurement Management	Pre-Order and Quote	PROINQ, AVLREQ, TIQREQ	879	PIP3A2		137_sync_pricelist_001, 138_get_pricelist_001, 139_show_pricelist_001
Query Price	Procurement Management	Pre-Order and Quote					

Common Business Processes	Normative Category	Normative Sub Category	EDIFACT including sub-sets*	X12 including sub-set*	RosettaNet Partner Interface Process	CI (HWSW001A)	OAG BODs
	Management	Quote					
Query Availability	Procurement Management	Pre-Order and Quote	AVLREQ, AVLRSR				
Request Promise Of Availability	Procurement Management	Pre-Order and Quote	AVLREQ, AVLRSR				
Price Catalog	Procurement Management	Pre-Order and Quote	PRICAT	832			128_sync_catalog_001, 129_get_catalog_001, 130_show_catalog_001
Establishment Of Contract Award	Procurement Management	Pre-Order and Quote	CONEST	836			003_process_po_005 (with appropriate PO TYPE)
Negotiate Reservation	Procurement Management	Pre-Order and Quote	RESREQ, ITAREQ			0210, 0211	NA
Create Auction Offer	Procurement Management	Auction		840, 843			
Create Auction Bid							
Bid Acceptance							

Common Business Processes	Normative Category	Normative Sub Category	EDIFACT including sub-sets*	X12 including sub-set*	RosettaNet Partner Interface Process	CI (HWSW001A)	OAG BODs
<b>Barter Offer</b>							
<b>Barter Acceptance</b>							
<b>Haggle/Negotiation</b>							
<b>Report Auction Results</b>	<b>Procurement Management</b>	<b>Auction</b>					
<b>Check Credit</b>	<b>Procurement Management</b>	<b>Payment Term Negotiation</b>	<b>DOCAPP, DOCADV, DOCINF</b>	<b>460, 465, 466</b>			<b>025_get_credit_003, 026_show_credit_003, 028_change_status_003</b>
<b>Establish Payment Terms</b>	<b>Procurement Management</b>	<b>Payment Term Negotiation</b>	<b>Part of create PO, ORDERS</b>	<b>Part of 850</b>			<b>006_load_payable_005 003_process_po_005 (payment terms are on the PO) 152_sync_quote_001 (payment terms are on the quote)</b>
<b>Amend Payment Terms</b>	<b>Procurement Management</b>	<b>Payment Term Negotiation</b>	<b>DOCAMR, DOCARE, Part of</b>	<b>469 Part of Change PO, 860, 865</b>			<b>003_process_po_005 (payment terms are on the PO)</b>

Common Business Processes	Normative Category	Normative Sub Category	EDIFACT including sub-sets*	X12 including sub-set*	RosettaNet Partner Interface Process	CI (HWSW001A)	OAG BODs
			ORDCHG, ORDRSP	860, 865			the PO) 152_sync_quote_001 (payment terms are on the quote)
Item Performance History Request	Procurement Management	Forecast / Planning	INVRPT	852			
Item Performance History Response	Procurement Management	Forecast / Planning	INVRPT	852			
Create Sales/Order Forecast	Procurement Management	Forecast / Planning	DELFOR	830, 850 (blanket)			162_sync_plansched_002, 165_sync_seqsched_002
Identify Forecast Exception	Procurement Management	Forecast / Planning					163_get_plansched_002, 164_show_plansched_002, 166_get_seqsched_002, 167_show_seqsched_002
Resolve Forecast Exception	Procurement Management	Forecast / Planning					163_get_plansched_002, 164_show_plansched_0



Common Business Processes	Normative Category	Normative Sub Category	EDIFACT including sub-sets*	X12 including sub-set*	RosettaNet Partner Interface Process	CI (HWSW001A)	OAG BODs
							02, 166_get_seqsched_002, 167_show_seqsched_002
Create Shipping Schedule For JIT Delivery	Procurement Management	Forecast / Planning	DELJIT	830			168_sync_shipsched_002, 169_get_shipsched_002, 170_show_shipsched_002
Request Forecast Information	Procurement Management	Forecast / Planning					
Obtain Future Trend Analysis Request	Procurement Management	Forecast / Planning					
Obtain Future Trend Analysis Response	Procurement Management	Forecast / Planning					
Obtain Performance History Request	Procurement Management	Forecast / Planning	INVRPT	846			
Obtain Performance History Response	Procurement Management	Forecast / Planning	INVRPT	846, 852			

Common Business Processes	Normative Category	Normative Sub Category	EDIFACT including sub-sets*	X12 including sub-set*	RosettaNet Partner Interface Process	CI (HWSW001A)	OAG BODs
<b>History Response</b>							
<b>Issue Sales/Order Forecast</b>	<b>Procurement Management</b>	<b>Forecast / Planning</b>	<b>DELFOR</b>	<b>830, 850</b>			
<b>Issue Raw Material Authorization</b>	<b>Procurement Management</b>	<b>Forecast / Planning</b>	<b>DELFOR</b>	<b>830, 850</b>			
<b>Issue Fabrication Authorization</b>	<b>Procurement Management</b>	<b>Forecast / Planning</b>	<b>DELFOR</b>	<b>830, 850</b>			
<b>Identify Forecast Exception</b>	<b>Procurement Management</b>						
<b>Resolve Forecast Exception</b>	<b>Procurement Management</b>						
<b>Issue Shipping Schedule for Delivery</b>	<b>Procurement Management</b>	<b>Replenishment /Scheduling</b>	<b>DELJIT</b>	<b>862, 866</b>			
<b>Receive Acknowledgment of Shipping Schedule Delivery</b>	<b>Procurement Management</b>	<b>Replenishment /Scheduling</b>	<b>APERAK</b>	<b>824</b>			
<b>Issue Shipment Authorization</b>	<b>Procurement Management</b>	<b>Replenishment /Scheduling</b>	<b>DELJIT</b>	<b>862, 866</b>			
<b>Identify Schedule Authorization</b>	<b>Procurement Management</b>	<b>Replenishment /Scheduling</b>					

Common Business Processes	Normative Category	Normative Sub Category	EDIFACT including sub-sets*	X12 including sub-set*	RosettaNet Partner Interface Process	CI (HWSW001A)	OAG BODs
Resolve Schedule Exception	Procurement Management	Replenishment/Scheduling					
Issue Defect Notification	Procurement Management	Defect Resolution					
Issue Defect Resolution Plan	Procurement Management	Defect Resolution					
Receive Resolution Plan Acceptance	Procurement Management	Defect Resolution					
Test Specification	Procurement Management	Test Specification					
Manage Purchase Order (Create/Change/Cancel and Accept PO)	Procurement Management	Procurement	ORDCHG, ORDERS, ORDRSP	860, 852, 850, 865, 875, 876	PIP3A4	0410, 0411	004_Acknowledge_PO_005 056_Add_PO_005 058_Cancel_PO_005 057_Change_PO_004 010_Get_PO_005 054_Getlist_PO_004 055_List_PO_004 003_Process_PO_005

Common Business Processes	Normative Category	Normative Sub Category	EDIFACT including sub-sets*	X12 including sub-set*	RosettaNet Partner Interface Process	CI (HWSW001A)	OAG BODs
							012_Receive_PO_004 011_Show_PO_005 092_Sync_PO_004
Create Order	Procurement Management	Procurement	ORDERS, ORDRSP	850, 855, 865	PIP3A4		
Change Order	Procurement Management	Procurement	ORDCHG	860	PIP3A4		057_Change_PO_004
Request Order	Procurement Management	Procurement		850 (OBI)			
Query Order Status	Procurement Management	Procurement	OSTENQ, OSTRPT	869, 870	PIP3A5		010_get_po_006, 011_show_po_005 054_getlist_po_005, 055_list_po_005
Distribute Order Status	Procurement Management	Procurement	OSTRPT	870	PIP3A6		011_show_po_006
Notify Of Purchase Order Acceptance	Procurement Management	Procurement	ORDRSP	855	PIP3A7		004_acknowledge_po_006
Evaluate Supplier Performance	Procurement Management	Procurement					
Communicate Supplier	Procurement Management	Procurement		501			

Common Business Processes	Normative Category	Normative Sub Category	EDIFACT including sub-sets*	X12 including sub-set*	RosettaNet Partner Interface Process	CI (HWSW001A)	OAG BODs
<b>Performance</b>	<b>Management</b>						
<b>Authorize Fabrication</b>	<b>Procurement Management</b>	<b>Authorize Action</b>	<b>DELFOR</b>	<b>830</b>			<b>066_create-prodorder_004</b>
<b>Authorize Shipment</b>	<b>Procurement Management</b>	<b>Authorize Action</b>	<b>DELJIT</b>	<b>830</b>			
<b>Authorize Raw Material</b>	<b>Procurement Management</b>	<b>Authorize Action</b>	<b>DELFOR</b>	<b>830</b>			
<b>Distribute Despatch Instructions</b>	<b>Procurement Management</b>	<b>Transportation and Distribution</b>	<b>INSDS</b>	<b>862, 858</b>	<b>PIP3B1</b>		<b>165_sync_shipschd_001</b>
<b>Notify Of Advance Shipment</b>	<b>Procurement Management</b>	<b>Transportation and Distribution</b>	<b>DESADV</b>	<b>856, 869</b>	<b>PIP3B2</b>	<b>0520</b>	<b>165_sync_shipschd_001</b>
<b>Notify Of Shipment Status</b>	<b>Procurement Management</b>	<b>Transportation and Distribution</b>	<b>IFTSTA, ORDSTA</b>	<b>114(Air), 214(Motor), 315(Ocean), 404 (Rail Carrier), 870</b>	<b>PIP3B3</b>		<b>161_Show_shipment_003</b>
<b>Query Shipment Status</b>	<b>Procurement Management</b>	<b>Transportation and Distribution</b>	<b>IFTSTQ</b>	<b>213(Motor Carrier), 313 (Ocean Carrier),</b>	<b>PIP3B4</b>		<b>161_show_shipment_001</b>

Common Business Processes	Normative Category	Normative Sub Category	EDIFACT including sub-sets*	X12 including sub-set*	RosettaNet Partner Interface Process	CI (HWSW001A)	OAG BODs
				869			
Change Shipment Information	Procurement Management	Transportation and Distribution	RECON	856	PIP3B5	0520	161_show_shipment_001
Notify Of Transport Exception	Procurement Management	Transportation and Distribution		854	PIP3B6		
Create Delivery Appointment	Procurement Management	Transportation and Distribution			PIP3B7		059_update_delivery_003
Notify Of Shipment Receipt	Procurement Management	Transportation and Distribution	RECADV	861	PIP3B8	0540	
Create Transportation Claim	Procurement Management	Transportation and Distribution			PIP3B9		
Shipment Instruction	Procurement Management	Transportation and Distribution	IFTMIN	304, 404, 104, 204, 853			003_process_po_005 (instructions on PO line and PO line schedule)
Booking Confirmation	Procurement Management	Transportation and Distribution	IFTMBC, RESREQ	301			

Common Business Processes	Normative Category	Normative Sub Category	EDIFACT including sub-sets*	X12 including sub-set*	RosettaNet Partner Interface Process	CI (HWSW001A)	OAG BODs
Create Freight Invoices	Procurement Management	Transportation and Distribution	INVOIC, IFTMCS	110, 210, 310,410,810			
Customs Declaration (International Freight)	Procurement Management	Transportation and Distribution	CUSDEC				161_show_shipment_001(Carried as part of the Show Shipment)
Material Safety Data Sheet	Procurement Management		SAFHAZ	848			
Compliance Leak Report	Procurement Management						
Marine Inspection Report	Procurement Management			867			
Return Product	Procurement Management	Return of Goods	CREADV, DEBADV	180,812	PIP3C1	0710, 0711, 0720, 0730	161_show_shipment_001
Obtain Financing Approval	Procurement Management	Payment	AUTHOR	828	PIP3C2		028_change_status_003, 027_update_credit_003
Match Invoice	Procurement Management	Payment	INVOIC	810, 819, 811	PIP3C3	0810, 0811, 0820, 0821	073_load_matchdoc_004, 077_get_matchdoc_005, 078_Show_matchdoc_005

Common Business Processes	Normative Category	Normative Sub Category	EDIFACT including sub-sets*	X12 including sub-set*	RosettaNet Partner Interface Process	CI (HWSW001A)	OAG BODs
Process Payment	Procurement Management	Payment	REMADV, PAYORD, DIRDEB, FINSTA, BANSTA	820, 824, 823, 827, 185, 813	PIP3C4	0830, 0831	
Distribute Risk Analysis	Procurement Management	Product Configuration			PIP3D1		
Distribute Test Report	Procurement Management	Product Configuration			PIP3D2		
Distribute Test Result	Procurement Management	Product Configuration	BMISRM	863	PIP3D10		
Request Product Acceptance	Procurement Management	Product Configuration			PIP3D11		
Distribute Engineering Change Request	Procurement Management	Product Configuration			PIP3D12		107_sync_engchgorder_002, 108_get_engchgordr_002, 109_show_engchgorder_002
Distribute Engineering Change Request	Procurement Management	Product Configuration			PIP3D13		107_sync_engchgorder_002,



Common Business Processes	Normative Category	Normative Sub Category	EDIFACT including sub-sets*	X12 including sub-set*	RosettaNet Partner Interface Process	CI (HWSW001A)	OAG BODs
Change Response							108_get_engchgdr_002, 109_show_engchgorder_002
Request Engineering Change Order Approval	Procurement Management	Product Configuration			PIP3D14		107_sync_engchgorder_002, 108_get_engchgdr_002, 109_show_engchgorder_002
Notify Of Engineering Change Order	Procurement Management	Product Configuration			PIP3D15		110_confirm_engchgorder_002
Notify Of Engineering Change Implementation Plan	Procurement Management	Product Configuration			PIP3D16		110_confirm_engchgorder_002
Notify Of Solution Configuration	Procurement Management	Product Configuration			PIP3D2		110_confirm_engchgorder_002
Notify Of Manufacturing Specification	Procurement Management	Product Configuration			PIP3D3		110_confirm_engchgorder_002

Common Business Processes	Normative Category	Normative Sub Category	EDIFACT including sub-sets*	X12 including sub-set*	RosettaNet Partner Interface Process	CI (HWSW001A)	OAG BODs
Request Build Authorization	Procurement Management	Product Configuration		625	PIP3D4		
Distribute Material Status	Procurement Management	Product Configuration			PIP3D5		061_show_item_004
Notify Of Build Readiness	Procurement Management	Product Configuration			PIP3D6		
Request Deviation Or Waiver	Procurement Management	Product Configuration			PIP3D7		
Distribute Work In Process	Procurement Management	Product Configuration			PIP3D8		033_update_wipconfirm_004
Query Work In Process	Procurement Management	Product Configuration			PIP3D9		031_get_wipconfirm_003 032_show_wipconfirm_004
Distribute New Product Information	Product Introduction	Preparation for Distribution		832	PIP2A1	0110	140_sync_itemspecs_001 142_show_itemspecs_001
Query Product Information	Product Introduction	Preparation for Distribution	TIQREQ	893, 620	PIP2A2		141_get_itemspecs_001, 142_show_itemspecs_001, 100_get_item_003,

Common Business Processes	Normative Category	Normative Sub Category	EDIFACT including sub-sets*	X12 including sub-set*	RosettaNet Partner Interface Process	CI (HWSW001A)	OAG BODs
							101_show_item_003
Query Marketing Information	Product Introduction	Preparation for Distribution			PIP2A3		141_get_itemspecs_001, 142_show_itemspecs_001, 139_show_pricelist_001, 138_get_pricelist_001, 135_get_itemxref_001, 136_show_itemxref_001
Query Sales Promotion And Rebate Information	Product Introduction	Preparation for Distribution		889	PIP2A4		141_get_itemspecs_001, 142_show_itemspecs_001
Query Technical Information	Product Introduction	Preparation for Distribution		841	PIP2A5		141_get_itemspecs_001, 142_show_itemspecs_001
Query Product Lifecycle Information	Product Introduction	Preparation for Distribution			PIP2A6		141_get_itemspecs_001, 142_show_itemspecs_001
Request Product Discontinuation Information	Product Introduction	Preparation for Distribution			PIP2A7		141_get_itemspecs_001, 142_show_itemspecs_001

Common Business Processes	Normative Category	Normative Sub Category	EDIFACT including sub-sets*	X12 including sub-set*	RosettaNet Partner Interface Process	CI (HWSW001A)	OAG BODs
							01
Distribute Product Stock Keeping Unit (SKU)	Product Introduction	Preparation for Distribution			PIP2A8		134_sync_itemxref_001 136_show_itemxref_001
Change Product Information	Product Introduction	Product Change Notification	TUPREQ, SKDUPD	888	PIP2B1		065_update_productreq_004
Change Marketing Information	Product Introduction	Product Change Notification			PIP2B2		140_sync_itemspecs_001,
Change Sales Promotion And Rebate Information	Product Introduction	Product Change Notification			PIP2B3		137_sync_pricelist_001 140_sync_itemspecs_001
Change Product Technical Information	Product Introduction	Product Change Notification			PIP2B4		140_sync_itemspecs_001 061_sync_item_004
Change Product Lifecycle Information	Product Introduction	Product Change Notification			PIP2B5		134_sync_itemxref_001,

Common Business Processes	Normative Category	Normative Sub Category	EDIFACT including sub-sets*	X12 including sub-set*	RosettaNet Partner Interface Process	CI (HWSW001A)	OAG BODs
Query Optional Product Information	Product Introduction	Product Change Notification			PIP2B6		135_get_itemxref_001, 136_show_itemxref_001
Distribute Inventory Report	Procurement Management	Inventory Reporting	INVRPT	846	PIP4C1		068_sync_inventory_005
Distribute Inventory Tieout Report	Procurement Management	Inventory Reporting			PIP4C2		
Distribute Inventory Error Notification	Procurement Management	Inventory Reporting			PIP4C3		
Distribute Inventory Tie-Out Discrepancy Report	Procurement Management	Inventory Reporting			PIP4C4		022_get_countinfo, 023_show_countinfo
Warehouse Stock Transfer Receipt Advice	Procurement Management	Inventory Reporting	RECADV	944			036_show_picklist_005 037_update_picklist_005
Warehouse Stock Transfer Shipment Advice	Procurement Management	Inventory Reporting		943			036_show_picklist_005 037_update_picklist_005
Notify Of Commercial Sales Report	Procurement Management	Sales Reporting	SLSRPT, STLRPT	867	PIP4E1		089_getlist_salesorder_005

Common Business Processes	Normative Category	Normative Sub Category	EDIFACT including sub-sets*	X12 including sub-set*	RosettaNet Partner Interface Process	CI (HWSW001A)	OAG BODs
							090_list_salesorder_005
Notify Of Consumer Sales Report	Procurement Management	Sales Reporting			PIP4E2		089_getlist_salesorder_005 090_list_salesorder_005
Notify Of Tieout Sales Report	Procurement Management	Sales Reporting			PIP4E3		089_getlist_salesorder_005 090_list_salesorder_005
Request Detail Sales Tieout Report	Procurement Management	Sales Reporting			PIP4E4		089_getlist_salesorder_005 090_list_salesorder_005
Distribute Commercial Sales Report Error Notification	Procurement Management	Sales Reporting			PIP4E5		089_getlist_salesorder_005 090_list_salesorder_005
Notify Of Consumer Sales Report For Affected Errors	Procurement Management	Sales Reporting					
Distribute Consumer Sales Report Error Notification	Procurement Management	Sales Reporting			PIP4E6		

Common Business Processes	Normative Category	Normative Sub Category	EDIFACT including sub-sets*	X12 including sub-set*	RosettaNet Partner Interface Process	CI (HWSW001A)	OAG BODs
Price Protection	Procurement Management	Price Protection			PIP4F		
Ship From Stock And Debit_Credit	Procurement Management	Ship from Stock and Debit_Credit					161_show_shipment_003
	Procurement Management	Regulatory_Royalty		185, 813			
Create Invoice (Products)	Financial	Financial	INVOIC	810			076_load_plinvoice_003
Create Invoice (Services)	Financial	Financial		811			
Receive Payables	Financial	Financial		820			006_load_payable_005
Originate Payables	Financial	Financial		820			
Receive Receivables	Financial	Financial		820, 823			
Originate Receivables	Financial	Financial		820			
Originate Child Support Payments	Financial	Financial		820			
Originate Payroll	Financial	Financial		820			
Originate Tax	Financial	Financial		820			

Common Business Processes	Normative Category	Normative Sub Category	EDIFACT including sub-sets*	X12 including sub-set*	RosettaNet Partner Interface Process	CI (HWSW001A)	OAG BODs
<b>Payments</b>							
<b>Originate Royalty Payments</b>	Financial	Financial		820			
<b>Acknowledge a Payment Order</b>	Financial	Financial		824			
<b>Confirm/Verify Payment Orders</b>	Financial	Financial		831			
<b>Notify Party of Returned payment Item</b>	Financial	Financial		827			
<b>Request Payment Cancellation</b>	Financial	Financial		829			
<b>Process Lockbox</b>	Financial	Financial		823			
<b>Cash Reconciliation (Asset)</b>	Financial	Financial		821			
<b>Cash Reconciliation (Liability)</b>	Financial	Financial		821			
<b>Send Debit Authorization</b>	Financial	Financial		828			
<b>Issue a Check</b>	Financial	Financial		828			



Common Business Processes	Normative Category	Normative Sub Category	EDIFACT including sub-sets*	X12 including sub-set*	RosettaNet Partner Interface Process	CI (HWSW001A)	OAG BODs
<b>Issuance List</b>							
<b>Transmit Business Credit Information</b>	<b>Financial</b>	<b>Financial</b>		<b>155</b>			
<b>Transmit Real Estate Title Information</b>	<b>Financial</b>	<b>Financial</b>		<b>197</b>			
<b>Request Loan Information</b>	<b>Financial</b>	<b>Financial</b>		<b>198</b>			
<b>Transmit Loan Information</b>	<b>Financial</b>	<b>Financial</b>		<b>198</b>			
<b>Transmit Real Estate Settlement Information</b>	<b>Financial</b>	<b>Financial</b>		<b>199</b>			
<b>Report Mortgage Credit Information</b>	<b>Financial</b>	<b>Financial</b>		<b>200</b>			
<b>Transmit Uniform Residential Loan Application</b>	<b>Financial</b>	<b>Financial</b>		<b>201</b>			
<b>Transmit Mortgage Loan Information</b>	<b>Financial</b>	<b>Financial</b>		<b>202</b>			
<b>Transmit Mortgage Note Information and</b>	<b>Financial</b>	<b>Financial</b>		<b>205</b>			

Common Business Processes	Normative Category	Normative Sub Category	EDIFACT including sub-sets*	X12 including sub-set*	RosettaNet Partner Interface Process	CI (HWSW001A)	OAG BODs
<b>Characteristics</b>							
<b>Transmit Mortgage Service Information</b>	Financial	Financial		203			
<b>Transmit Real Estate Site Inspection Information</b>	Financial	Financial		206			
<b>Transmit Property Tax Information</b>	Financial	Financial		245			
<b>Transmit Collection Account Assignments</b>	Financial	Financial		248			
<b>Report Collection Account Status Inquiries</b>	Financial	Financial		248			
<b>Apply for Mortgage Insurance Benefits</b>	Financial	Financial		260			
<b>Request Real Estate Information</b>	Financial	Financial		261			
<b>Report Real Estate Information</b>	Financial	Financial		262			

Common Business Processes	Normative Category	Normative Sub Category	EDIFACT including sub-sets*	X12 including sub-set*	RosettaNet Partner Interface Process	CI (HWSW001A)	OAG BODs
Respond to a Residential Mortgage Insurance Application	Financial	Financial		263			
Mortgage Loan Default Status Report	Financial	Financial		264			
Order Real Estate Title Insurance Services	Financial	Financial		265			
Notify Parties of Mortgage or Property Record Change	Financial	Financial		266			
Transmit a Debit/Credit Adjustment	Financial	Financial		812			
Request/Respond Financial Action	Financial	Financial		814			
Transmit Billing and Operating Expense Details	Financial	Financial		819			
Transmit Account Analysis	Financial	Financial		822			

Common Business Processes	Normative Category	Normative Sub Category	EDIFACT including sub-sets*	X12 including sub-set*	RosettaNet Partner Interface Process	CI (HWSW001A)	OAG BODs
<b>Information</b>							
<b>Order for Mortgage Credit Information</b>	Financial	Financial		833			
<b>Request Account Adjustment Action</b>	Financial	Financial		844			
<b>Respond to a Request for Account Adjustment Action</b>	Financial	Financial		849			
<b>Apply for Residential Mortgage Insurance</b>	Financial	Financial		872			
<b>Invoice for Grocery Products</b>	Financial	Financial		880			
<b>Create Payroll</b>	Financial	Financial					040_update_persontime_003
<b>Issue Ticket/Voucher</b>			TKTREQ, TIKTRES				
<b>Exchange/Reissue Ticket</b>			TKTREQ, TKTRES				
<b>Refund Ticket</b>			TKTREQ, TKTRES				

Common Business Processes	Normative Category	Normative Sub Category	EDIFACT including sub-sets*	X12 including sub-set*	RosettaNet Partner Interface Process	CI (HWSW001A)	OAG BODs
Void Ticket			TKTREQ, TKTRES				
Request Payment Status	Financial	Financial	REMADV	820			
Request Payment	Financial	Financial	REMADV	820			
Customs Declaration (Shipper)	Transportation and Logistics	Declaration of Goods and Transportation	CUSDEC				161_show_shipment_003, 003_process_po_006, 084_sync_salesorder_005 (Customs declarations can be carried on each of these.)
Shipping Line To Customs – (Carrier)	Transportation and Logistics	Declaration of Goods and transportation	CUSCAR				161_show_shipment_003, 003_process_po_006, 084_sync_salesorder_005 (Customs declarations can be carried on each of these.)
Environment Health And Safety Declaration	Transportation and Logistics	Declaration of Goods and transportation	IFTDGN				161_show_shipment_003, 003_process_po_006,

Common Business Processes	Normative Category	Normative Sub Category	EDIFACT including sub-sets*	X12 including sub-set*	RosettaNet Partner Interface Process	CI (HWSW001A)	OAG BODs
							084_sync_salesorder_005 (Customs declarations can be carried on each of these.)
Export And Import Declaration	Transportation and Logistics	Declaration of Goods and transportation					161_show_shipment_003, 003_process_po_006, 084_sync_salesorder_005 (Customs declarations can be carried on each of these.)
Import Side Compliance Check	Transportation and Logistics	Declaration of Goods and transportation					161_show_shipment_003, 003_process_po_006, 084_sync_salesorder_005 (Customs declarations can be carried on each of these.)
Voyage Itinerary / Schedules	Transportation and Logistics	Declaration of Goods and transportation					161_show_shipment_003, 003_process_po_006, 084_sync_salesorder_005 (Customs declarations

Common Business Processes	Normative Category	Normative Sub Category	EDIFACT including sub-sets*	X12 including sub-set*	RosettaNet Partner Interface Process	CI (HWSW001A)	OAG BODs
							can be carried on each of these.)
Request For Compliance Screening (Solvency Check)	Transportation and Logistics	Declaration of Goods and transportation					161_show_shipment_003, 003_process_po_006, 084_sync_salesorder_005 (Customs declarations can be carried on each of these.)
Announce Arrival Of Vessel/Vehicle	Transportation and Logistics	Inbound Transport (at international port)					161_show_shipment_003
Entry Of Cargo	Transportation and Logistics	Inbound Transport (at international port)	COARRI				
Pickup / Pre-carriage Of Goods At Origin	Transportation and Logistics	Inbound Transport (at international port)					161_show_shipment_003
Announce Departure Of Vessel / Vehicle	Transportation and Logistics	Outbound Transportation (at international					161_show_shipment_003

Common Business Processes	Normative Category	Normative Sub Category	EDIFACT including sub-sets*	X12 including sub-set*	RosettaNet Partner Interface Process	CI (HWSW001A)	OAG BODs
		port)					
Departure Of Cargo	Transportation and Logistics	Outbound Transportation (at international port)	CODECO				
Onward Carriage Of Cargo To Final Destination	Transportation and Logistics	Outbound Transportation (at international port)					161_show_shipment_003
Vessel / Vehicle Arrival Planning	Transportation and Logistics	Operation (at international port of call)					161_show_shipment_003
Vessel / Vehicle Departure Planning	Transportation and Logistics	Operation (at international port of call)					161_show_shipment_003
Vessel / Vehicle Discharge Operation	Transportation and Logistics	Operation (at international port of call)	BAPLIE				
Vessel / Vehicle Load Operation	Transportation and Logistics	Operation (at international port of call)					
Cargo Relay Operation	Transportation and Logistics	Operation (at international					



Common Business Processes	Normative Category	Normative Sub Category	EDIFACT including sub-sets*	X12 including sub-set*	RosettaNet Partner Interface Process	CI (HWSW001A)	OAG BODs
Operation	and Logistics	port of call)					
Customs Clearance Of Cargo For Export	Transportation and Logistics	Clearance					161_show_shipment_003
Customs Clearance Of Cargo For Import	Transportation and Logistics	Clearance					161_show_shipment_003
Health And Safety Clearance Of Cargo	Transportation and Logistics	Clearance					161_show_shipment_003
To-Be-Determined	Transportation and Logistics	G. Cross Border Return Handling					
Manage Sales Lead	Marketing Management	Marketing Campaign Management			PIP5A1		
Transfer Sales Lead Responsibility	Marketing Management	Marketing Campaign Management			PIP5A2		087_change_salesorder_006 (Carries sales lead responsible for the order.)
Query Sales Lead Status	Marketing Management	Marketing Campaign Management			PIP5A3		

Common Business Processes	Normative Category	Normative Sub Category	EDIFACT including sub-sets*	X12 including sub-set*	RosettaNet Partner Interface Process	CI (HWSW001A)	OAG BODs
Notify Of Sales Lead Status	Marketing Management	Marketing Campaign Management			PIP5A4		
Distribute Marketing Activity Information	Marketing Management	Marketing Campaign Management			PIP5B1		
Notify Of Marketing Activity	Marketing Management	Marketing Campaign Management					
Create Sales Marketing Claim	Marketing Management	Marketing Campaign Management					
Process Sales Marketing Claim	Marketing Management	Marketing Campaign Management			PIP5B2		
Change Sales Marketing Claim	Marketing Management	Marketing Campaign Management			PIP5B3		
Notify Of Cancel Sales Marketing Claim	Marketing Management	Marketing Campaign Management			PIP5B4		
Query Sales Marketing Claim Status	Marketing Management	Marketing Campaign Management			PIP5B5		

Common Business Processes	Normative Category	Normative Sub Category	EDIFACT including sub-sets*	X12 including sub-set*	RosettaNet Partner Interface Process	CI (HWSW001A)	OAG BODs
Notify Of Sales Marketing Claim Status	Marketing Management	Marketing Campaign Management			PIP5B6		
Distribute Product List	Marketing Management	Design Win Management			PIP5C1		
Request Design Registration	Marketing Management	Design Win Management			PIP5C2		
Request Design Win	Marketing Management	Design Win Management			PIP5C3		
Distribute Registration Status	Marketing Management	Design Win Management			PIP5C4		
Query Registration Status	Marketing Management	Design Win Management			PIP5C5		
Request Ship From Stock And Debit Authorization	Marketing Management	Ship from Stock and Debit			PIP5D1		019_confirm_issue_005
Notify Of Blanket Ship From Stock And Debit Authorization	Marketing Management	Ship from Stock and Debit			PIP5D2		161_show_shipment_003
Distribute Open Ship From Stock And Debit	Marketing Management	Ship from Stock and Debit			PIP5D3		

Common Business Processes	Normative Category	Normative Sub Category	EDIFACT including sub-sets*	X12 including sub-set*	RosettaNet Partner Interface Process	CI (HWSW001A)	OAG BODs
<b>Authorization Status</b>		<b>Debit</b>					
<b>Query Ship From Stock And Debit Authorization Status</b>	<b>Marketing Management</b>	<b>Ship from Stock and Debit</b>			<b>PIP5D4</b>		
<b>Create Ship From Stock And Debit Claim</b>	<b>Marketing Management</b>	<b>Ship from Stock and Debit</b>			<b>PIP5D5</b>		
<b>Notify Of Ship From Stock And Debit Claim Status</b>	<b>Marketing Management</b>	<b>Ship from Stock and Debit</b>			<b>PIP5D6</b>		<b>028_change_status_003</b>
<b>Product Request (Internal / External – All Sources)</b>	<b>Product Development</b>	<b>Needs Determination</b>	<b>PROINQ</b>	<b>841, 244</b>			
<b>Request Evaluation (Research)</b>	<b>Product Development</b>	<b>Needs Determination</b>		<b>841</b>			<b>143_sync_rfq_002</b>
<b>Evaluation Results</b>	<b>Product Development</b>	<b>Needs Determination</b>	<b>PRODAT</b>	<b>841</b>			<b>143_syn_rfq_002, 151_show_rfq_002</b>
<b>Gather And Document Information</b>	<b>Product Development</b>	<b>Requirements Definition</b>	<b>GENERAL</b>	<b>841</b>			<b>143_sync_rfq_002</b>

Common Business Processes	Normative Category	Normative Sub Category	EDIFACT including sub-sets*	X12 including sub-set*	RosettaNet Partner Interface Process	CI (HWSW001A)	OAG BODs
Analyze Information	Product Development	Requirements Definition					
Develop Functional Specifications	Product Development	Requirements Definition					
Develop Technical Specifications	Product Development	Design Product	PRODAT	841			
Design Tooling	Product Development	Design Product		841			150_get_rfq_002, 151_show_rfq_002, 144_add_rfq_002, 146_cancel_rfq_002
Design Process (Routing)	Product Development	Design Product	PROTAP	841			150_get_rfq_002, 151_show_rfq_002, 144_add_rfq_002, 146_cancel_rfq_002
Establish Product Configuration (BOM)	Product Development	Design Product	PRODAT	841			145_change_rfq_002
	Production Planning						145_change_rfq_002

Common Business Processes	Normative Category	Normative Sub Category	EDIFACT including sub-sets*	X12 including sub-set*	RosettaNet Partner Interface Process	CI (HWSW001A)	OAG BODs
Initiate Manufacturing Order	Product Manufacturing	Manufacturing	ORDERS	830			145_change_rfq_002
Setup Production Line (Tooling)	Product Manufacturing	Manufacturing					145_change_rfq_002
Get Materials (RM / Component Parts / MRO)	Product Manufacturing	Manufacturing					
Produce Product	Product Manufacturing	Manufacturing					
Inspect Incoming Material (Tooling, RM, Components)	Product Manufacturing	Quality Assurance	INSRPT, INSREQ	863			
Inspect WIP	Product Manufacturing	Quality Assurance	INSRPT, INSREQ	863			
Inspect Finished Goods	Product Manufacturing	Quality Assurance	INSRPT, INSREQ	863			
Test Product/Process Characteristics (RM, Components, Finished Goods)	Product Manufacturing	Quality Assurance	QUALITY	863			
Report Test Results / Non-	Product Manufacturing	Quality Assurance	QUALITY, INSRPT	863, 842			

Common Business Processes	Normative Category	Normative Sub Category	EDIFACT including sub-sets*	X12 including sub-set*	RosettaNet Partner Interface Process	CI (HWSW001A)	OAG BODs
<b>conformance / Scrap / Rework / Certifications</b>	<b>Manufacturing</b>	<b>Assurance</b>	<b>INSRPT</b>				
<b>Provide And Administer Asset Management</b>	<b>Service Support</b>	<b>Provide and Administer Warranties, Service Packages, and Contracted Services</b>			<b>PIP6A1</b>		
<b>Technical Support And Service Management</b>	<b>Service Support</b>	<b>Provide and Administer Warranties, Service Packages, and Contracted Services</b>			<b>PIP6C1 PIP6C2 PIP6C3 PIP6C4</b>		
	<b>Service Support</b>	<b>Provide and Administer Asset Management</b>			<b>PIP6B1</b>		

275

276 8.2 Catalog of Industry Specific Business Processes with Cross References

277 **Note: xCBL column removed from the following table**

278

279

Common Business Processes	Category	Sub Category	EDIFACT including sub-sets	X12 including sub-sets	xCBL 3.0	RosettaNet Partner Interface Process	OAG BODs
Declare Lien	Insurance	Administration	IPPOAD				
Accept Lien	Insurance	Administration	IPPOAD				
Change Insurer	Insurance	Cancellation	IPPOAD				
Claims Recovery Request	Insurance	Cancellation	IPPOAD, (Other TBD)				
Claims Recovery Acceptance	Insurance	Cancellation	IPPOAD, (Other TBD)				
Loss Advice	Insurance	Claims	IFTICL	272, 148			
Solicitor Instruction / Report	Insurance	Claims	ICSOLI				
Claims Settlement / Agreement / Invoice	Insurance	Claims	IFTICL, ICASRP	276, 810, 811			



Common Business Processes	Category	Sub Category	EDIFACT including sub-sets	X12 including sub-sets	xCBL 3.0	RosettaNet Partner Interface Process	OAG BODs
Loss Adjustment	Insurance	Claims	IFTICL				
Payment Rejection	Insurance	Claims	ICASRP	824			
Claims Payment	Insurance	Claims	PRPAID	820, 835			
Claims Survey Request	Insurance	Claims	IFTICL, ICASRP				
Claims Survey Report	Insurance	Claims	IFTICL, ICASRP				
Claims Recovery / Subrogation Request	Insurance	Claims	ICASRP	272			
Claims Recovery/ Subrogation Response	Insurance	Claims	ICASRP	272			
Authorization for Vendor Services on a Claim	Insurance	Claims	ICASRP	272			
Change / Cancel Authorization for Vendor Services	Insurance	Claims		272, 824			
Intermediary System Authority Update Request	Insurance	System Services	ISENDS				
Intermediary System Authority Update Accept	Insurance	System Services	ISENDS				

Common Business Processes	Category	Sub Category	EDIFACT including sub-sets	X12 including sub-sets	xCBL 3.0	RosettaNet Partner Interface Process	OAG BODs
Support Application for Admission	Student Record	Transcript/Student Record Transfer		130			
Update Enrollment Status	Student Record	Transcript/Student Record Transfer		130			
Support Application for Employment	Student Record	Transcript/Student Record Transfer		130			
Provide Transfer Credit Validation	Student Record	Transcript/Student Record Transfer		130			
Transfer Student Record	Student Record	Transcript/Student Record Transfer		130			
Support Licensing Application	Student Record	Transcript/Student Record Transfer		130			
Authenticate Sender of Transcript	Student Record	Transcript Acknowledgment		131			
Reconcile Transcript Data	Student Record	Transcript Acknowledgment		131			
Request Delivery of Transcript	Student Record	Request Transcript		146			
Respond to Transcript Request	Student Record	Request Response		147			
Support Application for Admission to Educational	Test Score Report	Transfer of Test Score and Related		138			

Common Business Processes	Category	Sub Category	EDIFACT including sub-sets	X12 including sub-sets	xCBL 3.0	RosettaNet Partner Interface Process	OAG BODs
<b>Institution</b>		<b>Information</b>					
<b>Support Application for Employment</b>	<b>Test Score Report</b>	<b>Transfer of Test Score and Related Information</b>		<b>138</b>			
<b>Support Licensing Application</b>	<b>Test Score Report</b>	<b>Transfer of Test Score and Related Information</b>		<b>138</b>			
<b>Update Testing Service Information</b>	<b>Test Score Report</b>	<b>Transfer of Test Score and Related Information</b>		<b>138</b>			
<b>Create a Prospective Student Record</b>	<b>Prospective Student Report</b>	<b>Transfer of Prospective Student Information</b>		<b>138</b>			
<b>Update a Prospective Student Record</b>	<b>Prospective Student Report</b>	<b>Transfer of Prospective Student Information</b>		<b>138</b>			
<b>Transfer Application Data</b>	<b>Admission of Students</b>	<b>Admission Application Processing</b>		<b>189</b>			
<b>Report Student Status Confirmation</b>	<b>Student Status Certification</b>	<b>Enrollment Verification</b>		<b>190</b>			
<b>Confirm Degree Awarded</b>		<b>Degree Verification</b>		<b>190</b>			

Common Business Processes	Category	Sub Category	EDIFACT including sub-sets	X12 including sub-sets	xCBL 3.0	RosettaNet Partner Interface Process	OAG BODs
Distribute Course Information	Course Catalog			188			
Request Course Information	Course Catalog			188			
Report Staff Profile	Human Resources	Staffing Information		132			
Report Staff Assignments				132			
Report Institution Description	Institutional Characteristics	Institution Information		133			
Report Institution Enrollment	Institutional Characteristics	Institution Information		133			
Report Institutional Student Profile	Institutional Characteristics	Institution Information		133			

280

281 **8.3 Description of Common Business Processes**

282 Each common business process identified in the catalog will contain detailed descriptions in this section. This definition will identify the roles,  
 283 transaction and documents involved in this process. Currently the table has limited descriptions and will grow as domain experts define the business  
 284 process specifications. This table is intended to be illustrative only, not exhaustive

Business Process	Definition
Request For Quote	<p>The Request Quote allows a Buyer to request a product quote from a Seller. The Seller may return a quote, or a referral to another Seller. The Buyer has the option of requesting a quote from the referral.</p> <p>Quotes may involve:</p> <p>*One or more items. * Fixed price quotes or negotiated prices. *Configurable or standalone product.</p>
Query Price And Availability	<p>Partners can query the price and availability of products from other partners that supply products in the supply chain.</p> <p>This query contains both the specification of a request for information and a specification of how that information must be returned to the requestor. (The information must be returned in tabular format in the order specified by the select part of the query.)</p>
Manage Purchase Order	<p>The purchase order management process comprises the creation, change and cancellation of a purchase order. A Buyer or buying organization initially creates a purchase order and sends the request to fulfil the order to a Seller. The Seller acknowledges acceptance of the purchase order by returning a substantive purchase order acceptance Business Document. A Buyer can then initiate a purchase order change or cancel the purchase order.</p>
Query Order Status	<p>The status of a product order is requested after a purchase order is created. The status of a purchase order informs a requesting partner of the fulfilment and shipping status of the products in the order. For example, products in the purchase order request may be backordered, shipped, or the entire purchase order may have been cancelled.</p>
Distribute Order Status	<p>The status of a product order is distributed on an unsolicited basis after a purchase order is created. The status of a product order informs a Buyer of the fulfillment and/or shipping status of the products in the order. For example, products in the purchase order request may be backordered, shipped or the entire purchase order may have been canceled</p>
Distribute New Product Information	<p>The process for distributing new product information to Buyers so that enterprise systems can be established to accept product orders, and for product information users to populate the Buyer's online sales catalogs.</p>

	<p>Two categories of product information are listed below.</p> <ol style="list-style-type: none"> <li>1. Sales catalog information typically used to promote products to non-technical customers. Sales catalog information can include quantities, prices and marketing information.</li> <li>2. Technical specifications that are used to promote products to technical products and to create content for configuration catalogs. Technical specifications only comprise the qualitative and quantitative properties.</li> </ol> <p>Product information is typically exchanged to partners who have subscribed for new announcements.</p>
--	--

285

286 **8.4 REA Table**

287 This table illustrates the normative categories and subcategories of an enterprise as envisioned in the value chain model of Michael Porter. It also  
 288 includes columns for illustrative REA (Resources-Events-Agent) components of the BRV layer of the UMM metamodel. The table portrays: (1) each  
 289 normative category, (2) its possible sub-categories, (3) its normal types of resource inflows and outflows, (4) its major types of events that effect those  
 290 flows, and (5) the normal types of agents and roles for those processes. This table is intended to be illustrative only, not exhaustive. The table also  
 291 includes an entry for an *Administration* category, a component not shown on the resource flow figure  
 292

Normative Category	Normative Sub-Category	Resource inflows & outflow	Major types of events	Economic Agents & Roles
Procurement	Bid Submission	Money	Payments	Buyer
	Contract Negotiation	Raw materials	Purchase	Seller
	Purchase Order Preparation	Facilities	Purchase Orders	Vendor
	Receiving	Services	Price Quotes	Cashier
		Technology	Contract Negotiation	
Human Resources	Hiring	Money	Cash Payments	Employee

Normative Category	Normative Sub-Category	Resource inflows & outflow	Major types of events	Economic Agents & Roles
	Training Payroll Management Personnel Deployment	Purchased training materials Purchased benefit packages	Acquisition of labor Training	Student Beneficiary
Transportation	Loading Shipping Packaging	Raw Materials Delivered Raw Materials Manufactured Goods Delivered Manufactured Goods	Shipment Warehousing Tasks Material Handling Trucking	Buyer Vendor Logistics Worker Trucker
Manufacturing	Product Development Product Design Assembly Quality control	Facilities & Technology Labor Raw Materials Finished Goods	Manufacturing Operation Raw Material Issue Manufacturing Job	Factory Worker Supervisor QC Inspector
Marketing & Sales	Advertising Use & Campaigning Marketing Management Sales Calling Customer Credit Management	Labor Advertising Service Delivered Goods Product Services Cash	Cash Payment Customer Invoice Sale Order Price Quotes Contract Negotiation	Customer Salesperson Cashier
Customer Service	After Sales Service Warranty Construction	Labor Purchased Services	Service Call Product Repair	Customer Service Agent

Normative Category	Normative Sub-Category	Resource inflows & outflow	Major types of events	Economic Agents & Roles
		Product Warranties & Services	Service Contract	Customer
Financing	Loan Management	Cash	Interest Payments	Stockholders
	Stock Subscriptions and Sales	Bonds	Stock Subscriptions	Bond Holders
	Dividend Policy	Stocks	Dividend Declarations	Investment Brokers
		Derivative Instruments	Cash Receipts	Financial Managers
Administration	Accounting	Employee Labor	Employee Service	Managers
	Financial Reporting		Management Projects	Clerks
	Executive Management			

293

294 **8.5 Transactional View**

295 This section and table depicts examples and illustrates the use of common business processes identified in the catalog, as business processes, binary  
 296 collaborations and business transactions within a specific hypothetical business process. That process is certain simple economic relationships  
 297 between a dotcom retailer (partner type "Retailer") and a drop ship vendor (partner type "DSVendor"), in the hypothetical Business Area "Direct to  
 298 Customer Retail", described in the exemplary use case used in Sections 7 and 8 of the Business Process Analysis & Worksheets. The table below  
 299 contains the essential metamodel element values for the business processes.

300

301

302



- A Business Transaction is an exchange of Business Documents between two parties. This table shows one row per Business Transaction.
- All Business Transactions MUST be contained in a two-party Binary Collaboration. CPAs are associated with each Binary Collaboration: the Process Specification Digest in a CPA points to a particular Authorized Role, and therefore to a particular Business Transaction, within a Binary Collaboration. A Binary Collaboration MUST contain one or more Business Transactions, which in the aggregate MUST use only two Partner Types. One or more Binary Collaborations MAY be aggregated (nested) into composite Collaborations which MUST use two Partner Types and MAY use more than two.
- A Business Process is a Collaboration (aggregated at any level) referenced as a whole process by an ebXML registry. This entire table may be defined as one Business Process. Partner types are assigned to persistent roles within a Business Process.
- Authorized Roles are assigned to each of the two roles in each Business Transaction. Each MUST be unique within a Business Process. It is RECOMMENDED that Authorized Roles be named to facilitate resource discovery, by creating unique composite values from a controlled vocabulary. **There is no normative rule for generating the names.** In this table, we have used a *hypothetical* controlled vocabulary which includes "Buyer, Seller, Shipper, Carrier, Shipment Receiver, Payor, Payee, Debtor, Creditor, Credit Service, Reporter, Report Receiver", to promote resource discovery and re-use. We have elected to use the Business Transaction names **(and, where necessary, Collaboration names)** to qualify and distinguish them.

303

BUSINESS PROCESS	BINARY COLLABORATION (protocol)	BUSINESS TRANSACTION (activity)  [N90 pattern] <sup>3</sup>	INITIATING / REQUESTING SIDE		RESPONDING SIDE	
			[X12:EDIFACT equivalents]		[X12:EDIFACT equivalents]	
Order Fulfillment	Manage Purchase Order**	Create order** [Commercial Transaction]	PARTNER TYPE: Retailer  AUTH ROLE: Buyer.Create order	DOCUMENT: Purchase Order [850:ORDERS]	PARTNER TYPE: DSVendor  AUTH ROLE: : Seller.Create order	DOCUMENT: PO Acknowledgment [855:ORDRSP]

<sup>3</sup> This column suggests use of one of the six demonstrative transaction patterns currently offered in the UN/CEFACT TMWG N90 metamodel.

\*\* These Business Transactions have been reused from the ebXML Common Business Process Catalog ver 1.0.

BUSINESS PROCESS	BINARY COLLABORATION (protocol)	BUSINESS TRANSACTION (activity)  [N90 pattern] <sup>3</sup>	INITIATING / REQUESTING SIDE	RESPONDING SIDE		
			[X12:EDIFACT equivalents]	[X12:EDIFACT equivalents]		
		Change Order ** [Commercial Transaction]	PARTNER TYPE: Retailer  AUTH ROLE: Buyer.Change order	DOCUMENT: Purchase Order [860:ORDCHG]	PARTNER TYPE: DSVendor  AUTH ROLE: : Seller.Change order	DOCUMENT: PO Acknowledgment [865:ORDRSP]
	Notify of advance shipment**	Notify of advance shipment [Notification]	PARTNER TYPE: DSVendor  AUTH ROLE: Shipper.Notify of advance shipment	DOCUMENT: ASN [856:DESADV]	PARTNER TYPE: Retailer  AUTH ROLE: Receiver.Notify of advance shipment	[No document: receive ASN]
Payment Fulfillment	Process Payment**	Process payment [Commercial Transaction]	PARTNER TYPE: DSVendor  AUTH ROLE: Payee.Process payment	DOCUMENT: Send Invoice [810:INVOIC]	PARTNER TYPE: Retailer  AUTH ROLE: Payor.Process payment	DOCUMENT: Pay invoice [820:PAYORD]

304



---

## 9 References

- 305
- 306 [Bra97] Bradner, S., "Key words for use in RFCs to Indicate Requirement Level", BCP 14,  
307 RFC 2119, March 1997.
- 308 [ ebBPSS ] ebXML Business Process Specification Schema. Version 0.90. 01/17/2001.  
309 Context/Metamodel Group of the CC/BP Joint Delivery Team.
- 310 [ bpPROC ] ebXML Catalog of Common Business Processes. Version TBD. Date TBD. ebXML  
311 CC/BP Analysis Team.
- 312 [ ebCNTXT ] ebXML The role of context in the re-usability of Core Components and Business  
313 Processes. Version 1.01. February 16, 2001. ebXML Core Components Project  
314 Team.
- 315 [XBACR] ebXML specification for the application of XML based assembly and context rules.  
316 Version 1.01. 16 February 2001. ebXML Core Components.
- 317 [ISO14662] Information Technologies - Open-EDI Reference Model. ISO/IEC 14662:1997(E).  
318 International Organization for Standardization (ISO) and International  
319 Electrotechnical Commission (IEC).
- 320 [TAGLOS] ebXML. TA Glossary. Version 0.95. 12 February 2001. Technical Architecture  
321 Project Team.
- 322 [TASPEC] ebXML Technical Architecture Specification. Version 1.0.4. 16 February 2001.  
323 ebXML Technical Architecture Project Team.
- 324 [UMM] UN/CEFACT Modelling Methodology. CEFACT/TMWG/N090R9. February 2001.  
325 UN/CEFACT Technical Modeling Working Group.
- 326 [MDACC] ebXML Methodology for the Discovery and Analysis of Core Components. DRAFT.  
327 Version 1.0.1. February 16, 2001. ebXML Core Components Project Team.
- 328 [BPAWAG] ebXML Business Process Analysis Worksheets and Guidelines. WORK-IN-  
329 PROGRESS. Version 0.9. March 10, 2001. ebXML Business Process Project  
330 Team.

---

## 10 Disclaimer

- 331
- 332 The views and specification expressed in this document are those of the authors and are not  
333 necessarily those of their employers. The authors and their employers specifically disclaim  
334 responsibility for any problems arising from correct or incorrect implementation or use of this  
335 design.

---

## 11 Contact Information

- 336
- 337 Business Process Project Team  
338 Business Process/Core Components (BP/CC) Analysis Team Lead:  
339 Name: Brian Hayes

340           Company:               Commerce One  
341           Street:                 4440 Rosewood Drive  
342           City, State, ZIP:       Pleasanton, CA  
343           Nation:                 USA  
344           Phone:                 +1 (925) 788-6304  
345           EMail:                 brian.hayes@UCLAumni.net  
346  
347           Editor:  
348           Name:                 Nita Sharma  
349           Company:             Netfish Technologies  
350           Street:               2350 Mission College Boulevard  
351           City, State, ZIP:     Santa Clara, CA 95054  
352           Nation:               USA  
353           Phone:               +1 (408) 350-9500  
354           EMail:               nsharma@netfish.com

## 355 Copyright Statement

356 Copyright © UN/CEFACT and OASIS, 2001. All Rights Reserved.

357 This document and translations of it may be copied and furnished to others, and derivative works  
358 that comment on or otherwise explain it or assist in its implementation may be prepared, copied,  
359 published and distributed, in whole or in part, without restriction of any kind, provided that the  
360 above copyright notice and this paragraph are included on all such copies and derivative works.  
361 However, this document itself may not be modified in any way, such as by removing the copyright  
362 notice or references to ebXML, UN/CEFACT, or OASIS, except as required to translate it into  
363 languages other than English.

364 The limited permissions granted above are perpetual and will not be revoked by ebXML or its  
365 successors or assigns. This document and the information contained herein is provided on an "AS  
366 IS" basis and ebXML DISCLAIMS ALL WARRANTIES, EXPRESS OR IMPLIED, INCLUDING  
367 BUT NOT LIMITED TO ANY WARRANTY THAT THE USE OF THE INFORMATION HEREIN  
368 WILL NOT INFRINGE ANY RIGHTS OR ANY IMPLIED WARRANTIES OF MERCHANTABILITY  
369 OR FITNESS FOR A PARTICULAR PURPOSE.