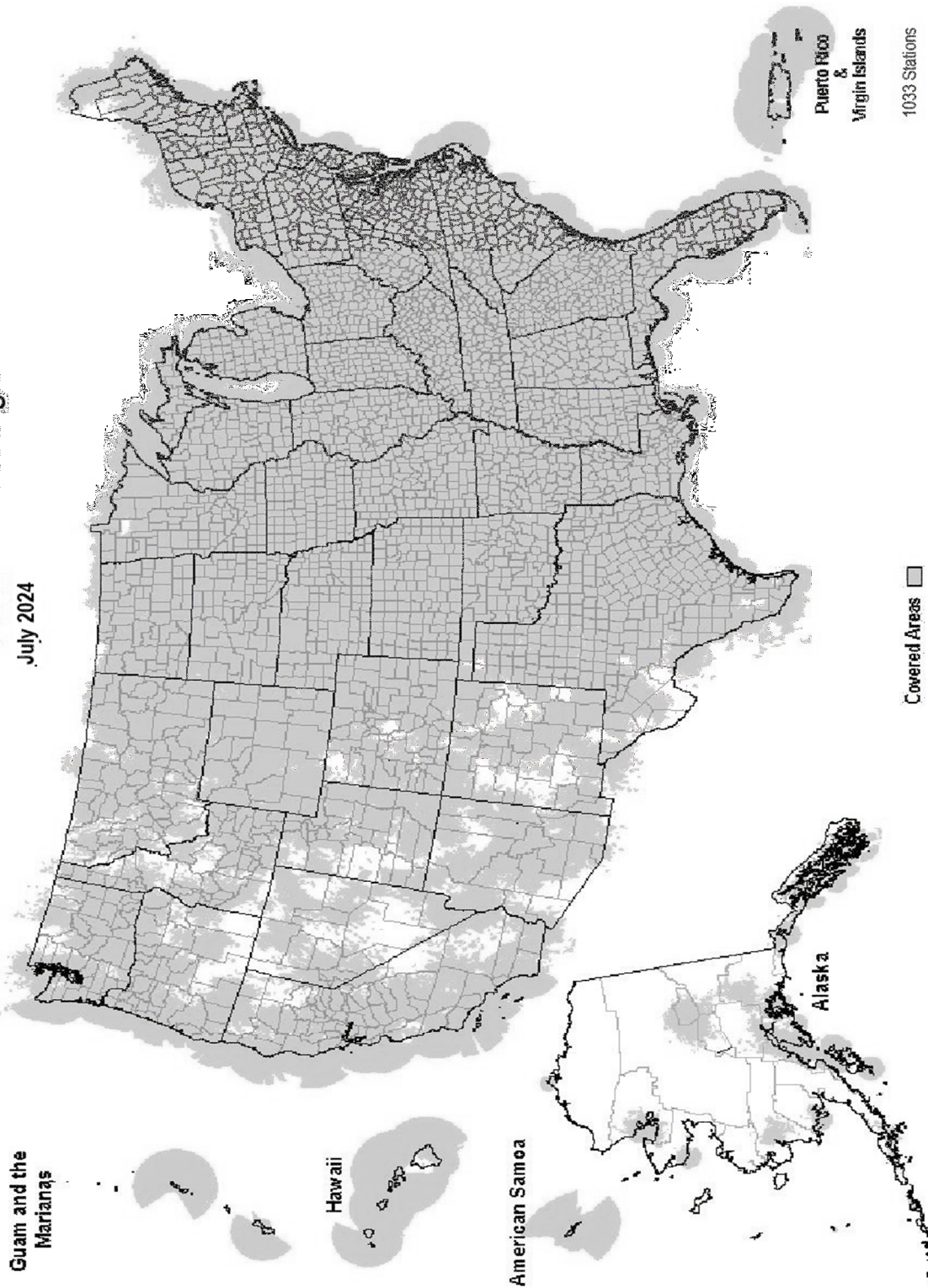
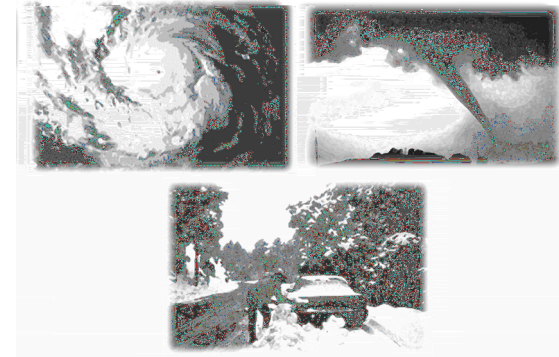


NOAA Weather Radio RF Coverage

July 2024



NOAA/PA 94062
Rev July 2024



**The Voice of NOAA's
National Weather Service**

< Over 1000 Transmitters >

**Broadcasting Continuous
Weather Information on the
Following Frequencies:**

- 162.400 MHz
- 162.425 MHz
- 162.450 MHz
- 162.475 MHz
- 162.500 MHz
- 162.525 MHz
- 162.550 MHz

U.S. Department of Commerce
National Oceanic and Atmospheric Administration
National Weather Service

<http://www.weather.gov/nwr/>

NOAA WEATHER RADIO

The Voice of NOAA's National Weather Service

<http://www.weather.gov/nwr>

NOAA Weather Radio is a service of the National Oceanic and Atmospheric Administration (NOAA) of the U.S. Department of Commerce. As the "voice of the National Weather Service," it provides continuous broadcasts (24 hours a day) of the latest weather information from local National Weather Service offices. Weather messages are repeated every 4 to 6 minutes and are routinely updated every 1 to 6 hours or more frequently in rapidly changing local weather or if a nearby natural hazardous or manmade condition exists.



The regular broadcasts are specifically tailored to weather information needs of the people within the service area of the transmitter. For example, in addition to general weather information, stations in coastal areas provide information of interest to mariners. Other specialized information, such as hydrological forecasts and other climate data may be broadcast.

During severe weather, National Weather Service forecasters can interrupt the routine weather broadcasts and insert special warning messages concerning imminent threats to life and property. The forecaster can also add special signals to warnings that trigger "alerting" features of specially equipped receivers. In the simplest case, this signal activates audible or visual alarms, indicating that an emergency condition exists within the broadcast areas of the station being monitored, and alerts the listener to turn up the volume and stay tuned for more information. More sophisticated receivers are automatically turned on and set to an audible volume when an alert is received.

In the most sophisticated alerting system, NOAA Weather Radio Specific Area Message Encoding (SAME), digital coding is employed to activate only those special receivers programmed for specific emergency conditions in specific area, typically a county. SAME can activate specially equipped radio and cable television receivers and provide a short text message that identifies the location and type of emergency. SAME is the primary activator for the FCC Emergency Alert System (EAS).

To program NWR SAME receivers with the proper county(s) and marine area(s) of choice, you need to know the 6-digit SAME code number(s) for that county(s). Once you have your code number(s), follow the manufacturer's directions for programming your NWR SAME receiver. You can obtain your SAME code numbers by dialing:

888-NWR-SAME (888-697-7263) – Voice & TTY/TTD Accessible

Under a January 1975 White House policy statement, NOAA Weather Radio was designated the sole Government-operated radio system to provide direct warning into private homes for both

RHODE ISLAND

Providence 162.400

SOUTH CAROLINA

Aiken 162.450
 Aynor 162.400
 Barnwell 162.500
 Beaufort 162.450
 Charleston 162.550
 Cheraw 162.450
 Columbia 162.400
 Cross 162.475
 Florence 162.550
 Georgetown 162.500
 Greenville 162.550
 Kirksey 162.425
 Orangeburg 162.525
 Rock Hill 162.425
 Savannah 162.400
 Sumter 162.425

SOUTH DAKOTA

Aberdeen 162.475
 Arlington 162.525
 Faith 162.475
 Firesteel 162.425
 Hot Springs 162.425
 Lead 162.525
 Lowry 162.500
 Mitchell 162.450
 Philip 162.450
 Pickstown 162.425
 Pierre 162.400
 Porcupine 162.500
 Rapid City 162.550
 Reliance 162.525
 Sioux Falls 162.400
 South Shore 162.425
 Wessington 162.550
 White River 162.550

TENNESSEE

Bristol 162.550
 Centerville 162.450
 Chattanooga 162.550
 Clarksville 162.500
 Clifton 162.500
 Cookeville 162.400
 Dyersburg 162.500
 Hickman 162.500
 Jackson 162.550
 Knoxville 162.475
 La Follette 162.450
 Lafayette 162.525
 Lawrenceburg 162.425
 Lobelville 162.525
 Memphis 162.475
 Nashville 162.550
 Shelbyville 162.475
 Spencer 162.450
 Vale 162.450
 Waverly 162.400
 Winchester 162.525

TEXAS

Abilene 162.400
 Alpine 162.550
 Amarillo 162.550
 Austin 162.400
 Bay City 162.425
 Beaumont 162.475
 Big Spring 162.475
 Brownsville 162.550
 Bryan 162.550

UTAH

Bear Lake 162.500
 Castle Dale 162.500
 Coalville/ Park City 162.475
 Escalante 162.425

Burkeville 162.425
 Carrizo Springs 162.550
 Center 162.525
 Childress 162.525
 Cisco 162.500
 Coleman 162.475
 Corpus Christi 162.550
 Corsicana 162.525
 Cumby 162.500
 Dallas 162.400
 Del Rio 162.400
 D'Hanis 162.525
 Dickens 162.500
 Dilley 162.500
 El Paso 162.475
 El Paso Spanish 162.550
 Fort Worth 162.550
 Galveston 162.550
 Gilmer 162.425
 Gonzales 162.525
 Guadalupe Mt Nat'l. Park 162.525
 Junction 162.475
 Kerrville 162.450
 La Grange 162.500
 Laredo 162.475
 Llano 162.425
 Lubbock 162.400
 Lufkin 162.550
 Marietta 162.525
 Miami 162.450
 Midland/Odessa 162.400
 Milano 162.525
 Mineral Wells 162.525
 Muenster 162.425
 New Taiton 162.450
 Onalaska 162.500
 Ozona 162.500
 Palestine 162.450
 Paris 162.550
 Pecos 162.450
 Perryton 162.475
 Pharr 162.400
 Pharr Spanish 162.475
 Plainview 162.450
 Port O'Connor 162.475
 Richland Springs 162.525
 Richmond 162.475
 Rio Grande City 162.425
 Riviera 162.525
 San Angelo 162.550
 San Antonio 162.550
 Santa Maria Spanish 162.450
 Seguin 162.475
 Seminole 162.425
 Sherman 162.475
 Stephenville 162.450
 Stinnett 162.400
 Summerfield 162.500
 Sweetwater 162.425
 Texarkana 162.550
 Three Rivers 162.450
 Throckmorton 162.425
 Tomball 162.400
 Tyler 162.475
 Uvalde 162.425
 Victoria 162.400
 Waco 162.475
 Wichita Falls 162.475

VIRGINIA

Accomack 162.525
 Covesville 162.450
 Fredericksburg 162.425
 Heathsville 162.400
 Lynchburg 162.550
 Manassas 162.550
 Norfolk 162.550
 Providence Forge 162.500
 Richlands 162.425
 Richmond 162.475
 Roanoke 162.475
 Sand Mtn. 162.450
 South Boston 162.525

WASHINGTON

Astoria 162.400
 Capitol Peak 162.475
 Cle Elum 162.400
 Davis Peak 162.525
 Dayton 162.525
 Forks 162.425
 H Street - Blaine Area 162.525
 Neah Bay 162.550
 Okanogan 162.525
 Plymouth 162.425
 Puget Sound Marine 162.425
 Randle 162.425
 Richland 162.450
 Seattle 162.550
 Spokane 162.400
 Wenatchee 162.475
 Yakima 162.550

WEST VIRGINIA

Backbone Mountain 162.450
 Beckley 162.550
 Charleston 162.400
 Clarksburg 162.550
 Garfield 162.500
 Gilbert 162.475

Lake Powell 162.550
 Logan 162.400
 Manti 162.425
 Milford/Cedar City 162.400
 Moab 162.475
 Monticello 162.450
 Salt Lake City 162.550
 St. George 162.475
 Tabiona 162.550
 Tooele (South Mountain) 162.450
 Tooele (Vernon Hills) 162.525
 Vernal 162.400
 Wendover 162.475

VERMONT

Burlington 162.400
 Castleton 162.500
 St. Johnsbury 162.425
 Windsor 162.475

VIRGIN ISLANDS

St. Thomas 162.450

WISCONSIN

Ashland 162.525
 Baraboo 162.450
 Black River Falls 162.500
 Coloma 162.400
 Crandon 162.450
 Dubuque 162.400
 Fond Du Lac 162.500
 Green Bay 162.550
 Gresham 162.500
 Janesville 162.425
 Ladysmith 162.550
 Madison 162.550
 Menomonie 162.400
 Milwaukee 162.400
 New London 162.525
 Park Falls 162.500
 Prairie Du Chien 162.500
 Racine 162.450
 Rhinelander 162.400
 Richland Center 162.475
 Sheboygan 162.525
 Sister Bay 162.425
 Spooner 162.475
 Tomah 162.525
 Wausau 162.475
 Wausaukee 162.400
 Winona 162.425
 Withee 162.425

WYOMING

Afton 162.475
 Casper 162.400
 Cheyenne 162.550
 Cody 162.400
 Dubois 162.450
 Elk Plaza 162.425
 Evanston 162.450
 Gillette 162.500
 Glendo 162.450
 Grant Village 162.450
 Jackson 162.525
 Kaycee 162.550
 Kemmerer 162.525
 Lander 162.475
 Newcastle 162.475
 Pinedale 162.500
 Rawlins 162.425
 Rock Springs 162.550
 Sheridan 162.475
 Thermopolis 162.500
 Worland 162.525

Greggs Knob 162.500
 Hinton 162.425
 Monteville 162.525
 Moorefield 162.400
 Morgantown 162.475
 Sutton 162.450

As of July 2024 NOAA is operating 1033 stations across the United States and its territories.

The National Weather Service requests your assistance in reporting any outages of NOAA Weather Broadcast Stations.

Please use our Toll Free Number (888) 697-7263 or send an Email to nwroutage@noaa.gov to report the outage.

Doniphan	162.450
El Dorado Springs	162.475
Eldon	162.550
Fordland	162.400
Fredericktown	162.500
Gainesville	162.425
Hannibal	162.475
Hawk Point	162.425
Hermitage	162.450
Jamestown	162.425
Joplin	162.550
Kansas City	162.550
La Plata	162.525
Lancaster	162.550
Maryville	162.425
Medill	162.450
Neosho	162.450
Piedmont	162.425
St. Louis	162.550
Summersville	162.475
Trenton	162.500
Wardell	162.525
West Plains	162.525

MONTANA

Baker	162.550
Belgian Hill	162.500
Billings	162.550
Bozeman	162.500
Broadus	162.425
Browning	162.525
Butte	162.550
Circle	162.550
Dillon	162.475
Ekalaka	162.475
Forsyth	162.525
Glasgow	162.400
Glendive	162.475
Glentana	162.525
Great Falls	162.550
Hardin	162.450
Havre	162.400
Helena	162.400
Jordan	162.500
Kalispell	162.550
Lewistown	162.500
Livingston	162.525
Malta	162.475
Miles City	162.400
Missoula	162.400
Plentywood	162.475
Poplar	162.425
Ryegate	162.450
Scobey	162.450
Wibaux	162.500
Winnett	162.400

NEBRASKA

Albion	162.500
Bassett	162.475
Beatrice	162.450
Cambridge	162.525
Chadron	162.525
Columbus	162.450
Grand Island	162.400
Holdrege	162.475
Lexington	162.425
Lincoln	162.475
Merna	162.500
Merriman	162.400
Mullen	162.425
Norfolk	162.550
North Platte	162.550
Omaha	162.400

Ord	162.525
Oshkosh	162.525
Scottsbluff	162.475
Shubert	162.500
Sidney	162.500
Superior	162.525
Trenton	162.500
Valentine	162.450
Yankton	162.500

NEVADA

Battle Mtn.	162.425
Bullhead City	162.500
Elko	162.550
Ely	162.400
Eureka	162.550
Fernley	162.450
Hawthorne	162.475
Jackpot	162.500
Las Vegas	162.550
Owyhee	162.450
Pahrump	162.400
Reno	162.550
Tonopah	162.400
Winnemucca	162.400

NEW HAMPSHIRE

Clarksville	162.400
Concord	162.400
Deerfield	162.450
Hanover	162.525
Holderness	162.550
Mt. Washington	162.500
Pack Monadnock	162.525

NEW JERSEY

Atlantic City	162.400
Hardyston	162.500
Southard	162.450

NEW MEXICO

Albuquerque	162.400
Artesia	162.425
Carlsbad	162.475
Des Moines	162.550
Farmington	162.475
Hobbs	162.400
Las Cruces	162.400
Portales	162.475
Roswell	162.450
Ruidoso	162.550
Santa Fe	162.550
Silver City	162.425

NEW YORK

Albany	162.550
Binghamton	162.475
Buffalo	162.550
Call Hill	162.425
Cattaraugus	162.425
Cooperstown	162.450
Elmira	162.400
Frewsburg	162.525
Gore Mtn.	162.450
Highland	162.475
Ithaca	162.500
Lyons	162.475
Middleville	162.425
Mt. Washington	162.450
New York City	162.550
Norwich	162.525
Riverhead	162.475
Rochester	162.400

Spencerport	162.525
Stamford	162.400
Syracuse	162.550
Walton	162.425
Watertown	162.475
White Hill	162.525

NORTH CAROLINA

Asheville	162.400
Buck Mountain	162.500
Cape Hatteras	162.475
Chapel Hill	162.550
Charlotte	162.475
Elberbe	162.400
Garner	162.450
Henderson	162.500
Linville	162.450
Mamie	162.425
Margaretsville	162.450
Mount Jefferson	162.500
New Bern	162.400
Robbinsville	162.525
Rocky Mount	162.475
Saint Pauls	162.475
Statesville	162.525
Warsaw	162.425
Windsor	162.525
Winnabow	162.550
Winston-Salem	162.400

NORTH DAKOTA

Bismarck	162.475
Cavalier	162.450
Dickinson	162.400
Fargo	162.475
Fort Ransom	162.525
Grand Forks	162.475
Jamestown	162.550
Langdon	162.500
Minot	162.400
New Town	162.525
Petersburg	162.400
Rolla	162.475
Scranton	162.525
Sheyenne	162.525
Steele	162.400
Webster	162.425
Williston	162.550
Willow City	162.450

NORTHERN MARIANA ISLANDS

Saipan	162.550
--------------	---------

OHIO

Akron	162.400
Athens	162.425
Bridgeport	162.525
Carey	162.525
Chillicothe	162.500
Cleveland	162.550
Columbus	162.550
Dayton	162.475
Grafton	162.500
High Hill	162.475
Lima	162.400
Mansfield	162.450
Marietta	162.400
New Philadelphia	162.425
Otway	162.525
Sandusky	162.400
Toledo	162.500
Youngstown	162.500

OKLAHOMA

Altus	162.425
Antlers	162.400
Ardmore	162.525
Atoka	162.500
Bartlesville	162.425
Broken Bow	162.450
Chickasha	162.450
Clinton	162.525
Enid	162.475
Grove	162.525
Guymon	162.500
Lawton	162.550
McAlester	162.475
Oklahoma City	162.400
Oktaha	162.525
Ponca City	162.450
Stillwater	162.500
Tulsa	162.550
Wewoka	162.550
Woodward	162.500

OREGON

Bend/Redmond	162.500
Brookings	162.550
Burns Butte	162.475
Cape Blanco	162.425
Carney Butte	162.475
Coos Bay	162.400
Eugene	162.400
Florence	162.500
Fossil	162.550
Hepner	162.425
John Day	162.500
Klamath Falls	162.550
Medford	162.400
Mt Hebo	162.525
Mt. Ashland	162.475
Neahkahnie	162.425
Newport	162.550
Portland	162.550
Reedsport	162.525
Roseburg	162.550
Salem	162.475
Spout Springs	162.400
The Dalles	162.400
Tillamook	162.475

PENNSYLVANIA

Allentown	162.400
Altoona	162.425
Clearfield	162.550
Coudersport	162.500
Erie	162.400
Harrisburg	162.550
Hibernia Park	162.425
Honesdale	162.450
Huntingdon	162.525
Johnstown	162.400
Meadville	162.475
Parker	162.425
Philadelphia	162.475
Pittsburgh	162.550
Reynoldsville	162.500
State College	162.475
Towanda	162.525
Warren	162.450
Wellsboro	162.475
Wilkes-Barre	162.550
Williamsport	162.400

PUERTO RICO

Maricao	162.550
San Juan	162.400

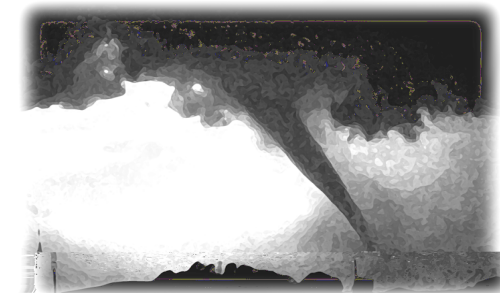
natural disasters and nuclear attack. This concept has been expanded to include warnings for all hazardous conditions that pose a threat to life and safety, both at a local and national level. As a result, NOAA Weather Radio is being better integrated with other National Weather Service systems to provide state and local emergency managers and other warning providers better access to local weather forecast offices, allowing hazard warnings of all types to be broadcast on NOAA Weather Radio within seconds

NOAA Weather Radio currently broadcasts from 1033 stations in fifty states, Puerto Rico, the U.S. Virgin Islands, American Samoa, Guam, and Saipan on seven frequencies in the VHF band, ranging from 162.400 to 162.550 megahertz (MHz). These frequencies are outside the normal AM or FM broadcast bands.

Special radios that receive only NOAA Weather Radio, both with and without special alerting features, are available from numerous manufacturers. In addition, other manufacturers are including NWR capability in a variety of receivers. NOAA Weather Radio capability is currently available on automobile, aircraft, marine, citizens band, and standard AM/FM radios as well as communications receivers, transceivers, scanners, and cable TV.

By nature and design, NOAA Weather Radio coverage is limited to an area within 40 miles of the transmitter. The quality of reception is dictated by transmitter distance, local terrain, and the quality and location of the receiver. In general, those using a high quality receiver on flat terrain or at sea can expect reliable reception beyond 40 miles. Those with standard receivers, surrounded by large buildings in cities and those in mountain valleys may experience little or no reception at considerably less than 40 miles. If possible, a receiver should be tested in the location where it will be used prior to purchase.

NOAA Weather Radio is directly available to a large portion of the U.S. and covers greater than 95 percent of the population.



If you have a question regarding the technical aspects of NOAA Weather Radio such as transmitter location, reception, and characteristics or if you are interested in becoming a partner with the National Weather Service to identify or provide local funding and/or facilities for the installation of a NOAA Weather Radio transmitter, please contact your local National Weather Service Office or send a letter to:

National Weather Service
 Attn: Dissemination Systems Branch, W/DSB
 1325 East-West Highway
 Silver Spring, MD 20910

The following is a listing of operational stations by state. For specific coverage information for your local area please visit our website at:
<http://www.weather.gov/nwr/>

ALABAMA

Anniston	162.475
Arab	162.525
Auburn	162.525
Birmingham	162.550
Brewton	162.475
Columbus	162.400
Cullman	162.450
Demopolis	162.475
Dozier	162.550
Florence	162.475
Greenville	162.425
Henagar	162.500
Huntsville	162.400
Jackson	162.500
Louisville	162.475
Mobile	162.550
Montgomery	162.400
Oneonta	162.425
Selma	162.450
Tuscaloosa	162.400
Winfield	162.525

ALASKA

Aithorp Peak	162.425
Anchorage	162.550
Bede Mountain	162.450
Bethel	162.550
Cape Fanshaw	162.425
Cape Gull	162.500
Cape Hinchinbrook	162.525
Cold Bay	162.425
Cordova	162.400
Craig	162.475
Dillingham	162.500
Duffield Peninsula	162.525
Duke Island	162.450
East Point	162.500
Fairbanks	162.550
Glennallen	162.550
Gravina Island	162.525
Haines	162.400
Homer	162.400
Juneau	162.550
Ketchikan	162.550
Kodiak	162.550

Kotzebue	162.550
Manleyville	162.500
Marmot Island	162.500
Middle Cape	162.525
Mt. McArthur	162.525
Mt. Robert Barron	162.450
Nenana	162.400
Ninilchik	162.550
Nome	162.550
Pillar Mtn.	162.525
Point Pigot	162.450
Potato Point	162.425
Raspberry Island	162.425
Rugged Island	162.425
Saint Paul Island	162.525
Sand Point	162.550
Seward	162.550
Sitka	162.550
Sitkinak Dome	162.450

Soldotna	162.475
Sukkwon Island	162.425
Tuklugh Mtn.	162.425
Unalaska	162.550
Utqiagvik	162.550
Valdez	162.550
Wasilla	162.400
Whittier	162.475
Wrangell	162.400
Yakutat	162.400
Zarembo Island	162.450

AMERICAN SAMOA

Mt. Oloatele	162.550
Pago Pago	162.400

ARIZONA

Flagstaff	162.400
Globe	162.500
Grand Canyon	162.475
Greer	162.525
Kingman	162.425
Lake Havasu	162.400
Nogales	162.500
Payson Gila County N.	162.425
Phoenix	162.550
Prescott	162.525
Safford	162.550
Tucson	162.400
Window Rock	162.550

ARKANSAS

Cherokee Village	162.475
El Dorado	162.525
Fayetteville	162.475
Fort Smith	162.550
Fountain Hill	162.475
Gurdon	162.475
Harrison	162.525
High Peak	162.425
Jonesboro	162.550
Little Rock	162.550
Marvell	162.525
Mena	162.400
Morrilton	162.475
Mountain View	162.450
Russell	162.400
Russellville	162.525
Springdale	162.400
Star City	162.400
Yellville	162.500

CALIFORNIA

Avalon	162.525
Bakersfield	162.550
Big Rock Ridge	162.500
Bishop	162.425
Coachella	162.400
Coachella / Spanish	162.525
Contra Costa County	162.425
Conway Summit	162.525
El Paso Mtns.	162.425
Eureka	162.400
Fresno	162.400
Grass Valley	162.400
Los Angeles	162.550
Malibu Marine	162.425
Monterey	162.550
Monterey Marine	162.450
Point Arena	162.550
Redding	162.550
Sacramento	162.550
San Diego	162.400

San Diego Marine	162.425
San Francisco	162.400
San Luis Obispo	162.550
San Simeon	162.525
Sandberg	162.425
Santa Ana	162.450
Santa Barbara	162.400
Santa Barbara Marine	162.475
Sonoma County	162.475
Susanville	162.500
Ukiah	162.525
Victorville	162.500
Willow Creek	162.450
Yosemite	162.450
Yuma	162.550

COLORADO

Alamosa	162.475
Anton	162.425
Bethune	162.525
Boyero	162.450
Canon City	162.500
Colorado Springs	162.475
Deer Trail	162.500
Denver	162.550
Dillon	162.400
Durango	162.425
Eagle	162.450
Fort Collins/Ault	162.450
Fort Morgan	162.525
Fowler	162.425
Franktown	162.450
Glenwood Springs	162.500
Grand Junction	162.550
Greeley	162.400
La Junta	162.500
Lamar	162.525
Mead/Longmont	162.475
Montrose	162.450
North Cottonwood	162.500
Pueblo	162.400
Springfield	162.400
Steamboat Springs	162.525
Sterling	162.400
Walsenburg	162.450
Wray	162.475

CONNECTICUT

Cornwall	162.500
Hartford	162.475
Meriden	162.400
New London	162.550

DELAWARE

Lewes	162.550
Salisbury	162.475

DISTRICT OF COLUMBIA

Washington DC	162.450
---------------------	---------

FLORIDA

Belle Glade	162.400
Daytona Beach	162.400
East Point	162.500
Fort Myers	162.475
Fort Pierce	162.425
Gainesville	162.475
Hialeah Spanish	162.500
Inverness	162.400
Jacksonville	162.550
Key West	162.400
Lake City	162.400
Largo	162.450

Melbourne	162.550
Miami	162.550
Morrison	162.550
Naples	162.525
Ocala	162.525
Orlando	162.475
Palatka	162.425
Panama City	162.550
Pensacola	162.400
Princeton	162.425
Salem	162.425
Sebring	162.500
Sneads	162.425
Sumterville	162.500
Tallahassee	162.400
Tampa Bay	162.550
Tea Table Key	162.450
Venice	162.400
West Palm Beach	162.475
Westville	162.450

GEORGIA

Americus	162.425
Ashburn	162.450
Athens	162.400
Atlanta	162.550
Augusta	162.550
Baxley	162.525
Blakely	162.525
Blue Ridge	162.475
Brasstown Bald	162.500
Brunswick	162.425
Buchanan	162.425
Chatsworth	162.400
Clayton	162.450
Cleveland	162.525
Eastman	162.400
Eatonton	162.525
Jesup	162.450
La Grange	162.450
Macon	162.475
Metter	162.425
Pelham	162.550
Sandersville	162.450
Summerville	162.450
Thomaston	162.500
Toccoa	162.425
Valdosta	162.500
Washington	162.500
Waycross	162.475

GUAM

Guam	162.400
------------	---------

HAWAII

Hawaii Kai	162.450
Kauai	162.400
Kulani Cone	162.550
Lihue	162.450
Maui	162.400
North Kohala	162.500
Oahu	162.550
South Point	162.550

IDAHO

Boise	162.550
Bonnars Ferry	162.500
Burley	162.475
Driggs	162.450
Grangeville	162.450
Lewiston	162.550
McCall	162.475
Orofino	162.500

Payette	162.400
Pocatello	162.550
Salmon	162.500
Sedgwick Peak	162.425
Sun Valley	162.450
Twin Falls	162.400

ILLINOIS

Bloomington	162.525
Champaign	162.550
Chester	162.450
Chicago	162.550
Crescent City	162.500
Crystal Lake	162.500
DeKalb	162.550
Dixon	162.525
Freeport	162.450
Galesburg	162.400
Hillsboro	162.425
Jacksonville	162.525
Jerseyville	162.450
Kankakee	162.525
Lockport	162.425
Macomb	162.500
Marion	162.425
McLeansboro	162.400
Newton	162.450
Odell	162.450
Paris	162.525
Peoria	162.475
Plano	162.400
Princeton	162.425
Quad Cities	162.550
Rockford	162.475
Salem	162.475
Shelbyville	162.500
Springfield	162.400

INDIANA

Angola	162.425
Bloomington	162.450
Edwardsport	162.425
Evansville	162.550
Fort Wayne	162.550
Georgia	162.500
Hebron	162.450
Indianapolis	162.550
Marion	162.450
Michigan City	162.500
Monticello/Lafayette	162.475
Muncie	162.425
New Albany	162.475
Newport	162.425
North Webster	162.500
Putnamville	162.400
Richmond	162.500
Seymour	162.525
South Bend	162.400

IOWA

Burlington	162.525
Carroll	162.425
Cedar Rapids	162.475
Decorah	162.525
Delaware	162.450
Denison	162.550
Des Moines	162.550
Essex	162.550
Fairfield	162.400
Forest City	162.500
Fort Dodge	162.400
Lewiston	162.400
Hancock/Pottawattam	162.525
Iowa Falls	162.525

Lake Rathbun	162.425
Lenox	162.450
Maquoketa	162.425
Marshalltown	162.500
Milford	162.550
Montezuma	162.450
Ottumwa	162.500
Ringsted	162.475
Sanborn	162.525
Sioux City	162.475
St. Ansgar	162.450
Storm Lake	162.450
Van Wert	162.475
Waterloo	162.550

KANSAS

Abilene	162.525
Beaumont	162.500
Belvidere	162.525
Blue Rapids	162.425
Chanute	162.400
Concordia	162.550
Dighton	162.525
Dodge City	162.475
Ellsworth	162.400
Gem	162.400
Great Bend	162.500
Halls Summit	162.425
Hays	162.450
Kirwin	162.500
Lenora	162.425
Meade	162.425
Parker	162.525
Saint Joseph	162.400
Sharon	162.400
Topeka	162.475
Tribune	162.550
Ulysses	162.450
Wichita	162.550

KENTUCKY

Ashland	162.550
Beattyville	162.500
Bowling Green	162.400
Burkesville	162.475
Campbellsville	162.525
Covington	162.550
East Madison County	162.525
Edmonton	162.450
Ekron	162.450
Elizabethtown	162.550
Frankfort	162.500
Frenchburg	162.475
Harlan	162.450
Hazard	162.475
Hopkinsville	162.450
Horse Cave	162.500
Irvine	162.475
Jackson	162.425
Lexington	162.400
London	162.475
Madison County	162.525
Madisonville	162.525
Manchester	162.400
Mayfield	162.475
Maysville	162.425
McKee	162.450
Moberly	162.525
Monticello	162.425
Morehead	162.400
Mount Vernon	162.425
Owenton	162.450
Paintsville	162.525
Phelps	162.500

Pikeville	162.400
Pineville	162.525
Somerset	162.550
Stanton	162.550
West Liberty	162.450
West Madison County	162.525
Whitesville	162.475
Williamsburg	162.500

LOUISIANA

Alexandria	162.475
Baton Rouge	162.400
Bogalusa	162.525