



## National Water Prediction Service (NWPS) FAQs and Primer

Updated 7/12/2024

Questions/Comments: [nwps.webmaster@noaa.gov](mailto:nwps.webmaster@noaa.gov)

- [Resources](#)
  - [Shortcut to access the NWPS Precipitation Estimation Page](#)
  - [How to turn Observations and/or Forecasts on and off](#)
  - [How to access the Hydrographs for a Weather Forecast Office \(WFO\) on one page \(mobile friendly\)](#)
  - [How to see the NWPS page for a Weather Forecast Office or River Forecast Center](#)
  - [How to see the individual Hydrographs for a gauge location](#)  
([A way to view hydrographs on mobile devices](#))
  - [How to enable Auto Refresh](#)
  - [How to view the old style AHPS hydrographs on an NWPS gauge page](#)
  - [Using the Search Bar](#)
  - [How to view detailed information for river gauges?](#)
  - [How to access the tabular data?](#)
- [NWS Weather Forecast Office Identifiers](#)
- [NWS River Forecast Center Identifiers](#)

---

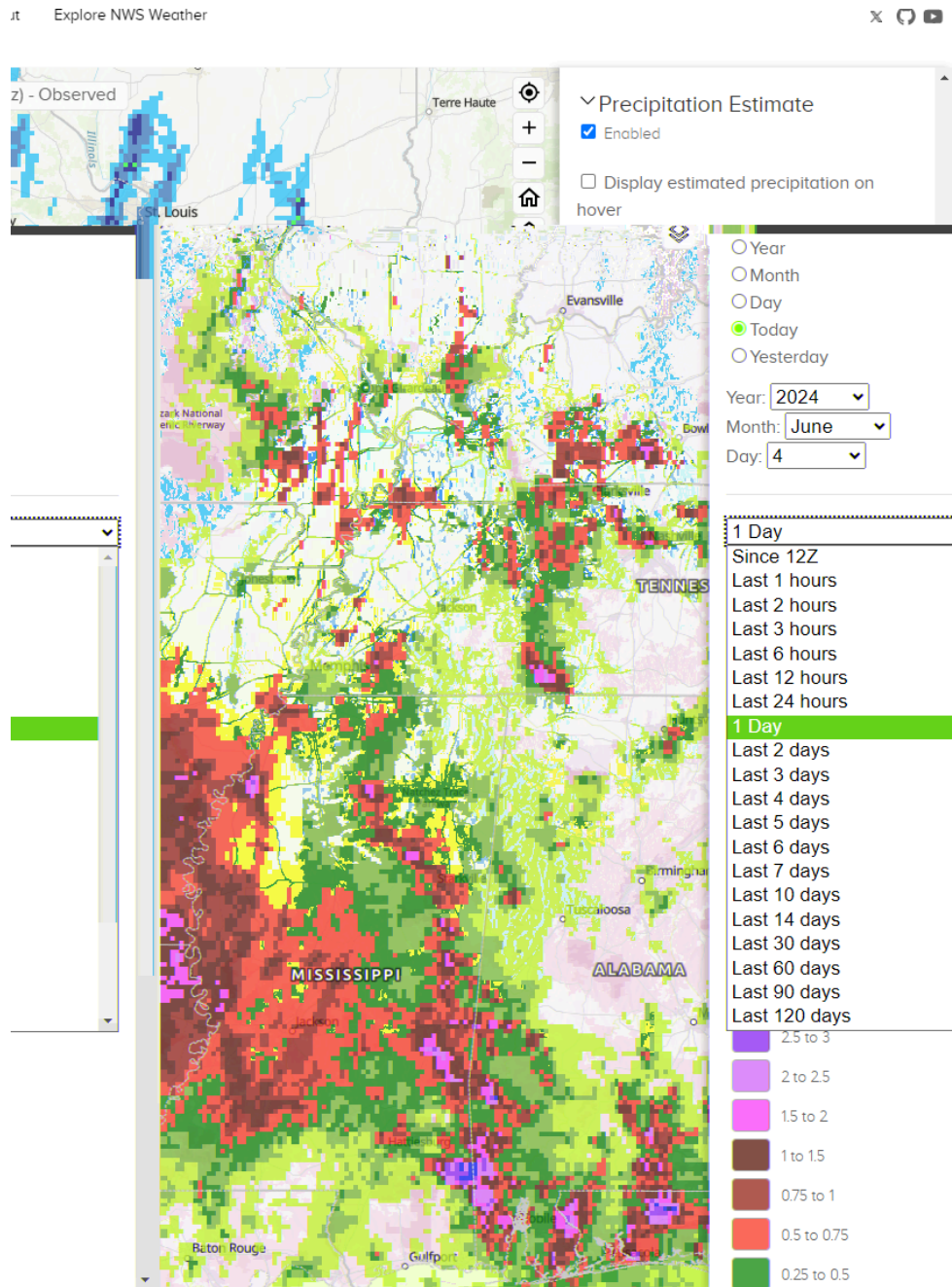
### ● Resources

- NWPS Flyer
- NWPS API Flyer
- NWPS Fact Sheet
- NWPS Overview (Story Map)
- NWPS Product and User Guide
- Recording of NWPS Partner Webinar

- Recording of NWPS API Webinar
- Service Description Document (SDD)

- **Shortcut to access the NWPS Precipitation Estimation Page**

- <https://water.noaa.gov/precip>
  - This direct link enables “Precipitation Estimation” data only. Expand the “Precipitation Estimation” Option on the right side to page for options. To display the “estimated precipitation value for each pixel”, select “Display estimated precipitation on hover” and zoom in.



---

- **How to turn Observations and/or Forecasts on and off**

- In the image below, click the word 'OBSERVATION' to turn all the observations on and off. Click the word 'FORECAST' to turn all the forecasts on and off. This saves you from having to check/uncheck each box.

CATEGORIES	OBSERVATION	FORECAST
Major Flood	3	2
Moderate Flood	7	9
Minor Flood	55	87
Action	167	191
No Flood	6125	1595
Flood Category Not Defined	3261	0
No Forecast Available	0	0
Low Water Threshold	11	0
Data Not Current	551	0
Out of Service	155	0

---

- **How to access the Hydrographs for a Weather Forecast Office (WFO) on one page (mobile friendly)**

- Accessing Hydrographs on a Mobile Device through the National Water Prediction Service [Video](#)
- <https://water.noaa.gov/area/XXX>
  - XXX is the three letter WFO. See [here](#) for a listing of all WFO IDs.
- For example, to see all the River Gauges within the Austin/San Antonio NWS Weather Forecast office go here: <https://water.noaa.gov/area/EWX>

■ Replace EWX with the WFO in your area.

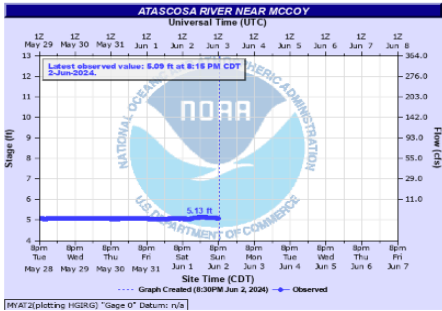
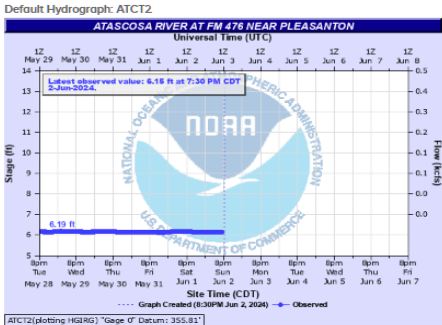
WGRFC / EWX

AREA HYDROGRAPHS

Default Hydrographs  Scale To Flood Categories

1 Atascosa River	1 Barton Creek	1 Bear Creek	1 Berry Creek	1 Big Sandy Creek	1 Blanco River
2 Boggy Creek	3 Brushy Creek	1 Bull Creek	2 Cibola Creek	3 Colorado River	1 Comal River
1 Culebra Creek	1 Devils River	1 Dolan Creek	1 Dry Comal	1 Dry Devils River	1 Dry Frio River
1 Frio River	1 Geronimo Creek	1 Guadalupe River	1 Helotes Creek	1 Hondo Creek	1 Johnson Creek
1 Lake Creek	1 Los Moras Creek	1 Leon Creek	1 Leona River	1 Little Blanco River	1 Little Walnut Creek
1 Llano River	1 Lost Creek	1 Martinez Creek	1 Medina River	1 Middle Verde Creek	1 North Fork Guadalupe River
1 North Fork San Gabriel River	1 North Prong Medina River	1 Nueces River	1 Olmos Creek	1 Onion Creek	1 Peach Creek
1 Pecos River	1 Pedernales River	1 Pinto Creek	1 Plum Creek	1 Red Bluff Creek	1 Rio Grande
1 Rio Grande Below Amistad Dam	1 Sabinal River	1 Salado Creek	1 San Antonio River	1 San Felipe Creek	1 San Gabriel River
1 San Marcos River	1 Sandies Creek	1 Sandy Creek	1 Seco Creek	1 Shoal Creek	1 Slaughter Creek
1 Sycamore Creek	1 Waller Creek	1 Walnut Creek	1 West Bouldin Creek	1 West Elm Creek	1 West Nueces River
1 West Prong Medina River	1 Wilbarger Creek	1 Williamson Creek			

Atascosa River



Barton Creek



---

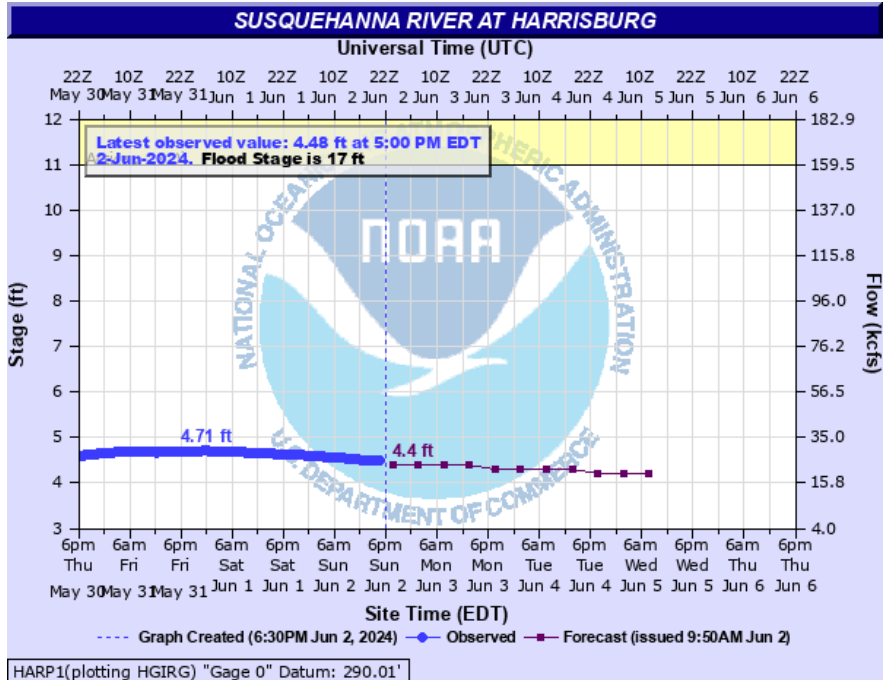
- **How to see the NWPS page for a Weather Forecast Office or River Forecast Center**

- <https://water.noaa.gov/wfo/XXX> for a Weather Forecast Office
  - See [here](#) for a listing of all WFO IDs.
  - For example to go to WFO Binghamton, NY use this URL:  
<https://water.noaa.gov/wfo/bgm>
- <https://water.noaa.gov/rfc/XXXXX> for a River Forecast Center
  - See [here](#) for a listing of all RFC IDs.
  - For example to go to the Middle Atlantic River Forecast Center use this URL: <https://water.noaa.gov/rfc/marfc>

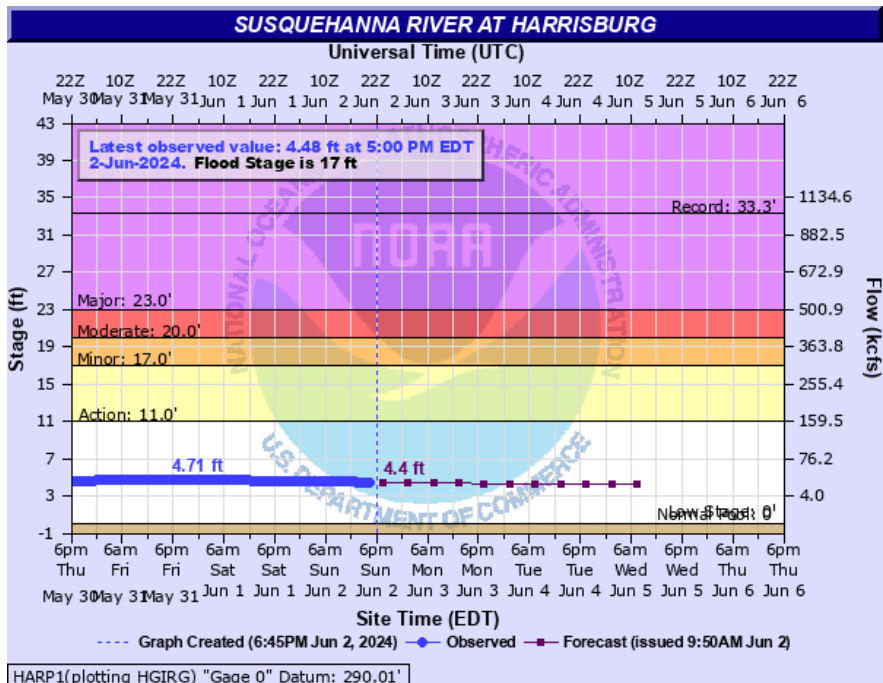
---

- **How to see the individual Hydrographs for a gauge location  
(A way to view hydrographs on mobile devices)**

- To see a river gauge with the new NWPS layout:
  - <https://water.noaa.gov/gauges/XXXXX>
- To see a river gauge hydrograph with the classic AHPS format (what most people are used to seeing):
  - [https://water.noaa.gov/resources/hydrographs/xxxxx\\_hg.png](https://water.noaa.gov/resources/hydrographs/xxxxx_hg.png) (lower case)
- **xxxxx** is the 5-letter Gauge ID
  - To find a river gauge listing listing go to:  
<https://hads.ncep.noaa.gov/states/states.shtml>
    - Choose your state and find your river gauge of choice. Look in the second column for the NWSLI (5-letter gauge ID).  
Substitute that NWSLI gauge ID into the xxxxx field above.
- To see the hydrographs for the Susquehanna River at Harrisburg:
  - For the new NWPS interactive page:  
<https://water.noaa.gov/gauges/HARP1>
  - For the old style AHPS Hydrographs:



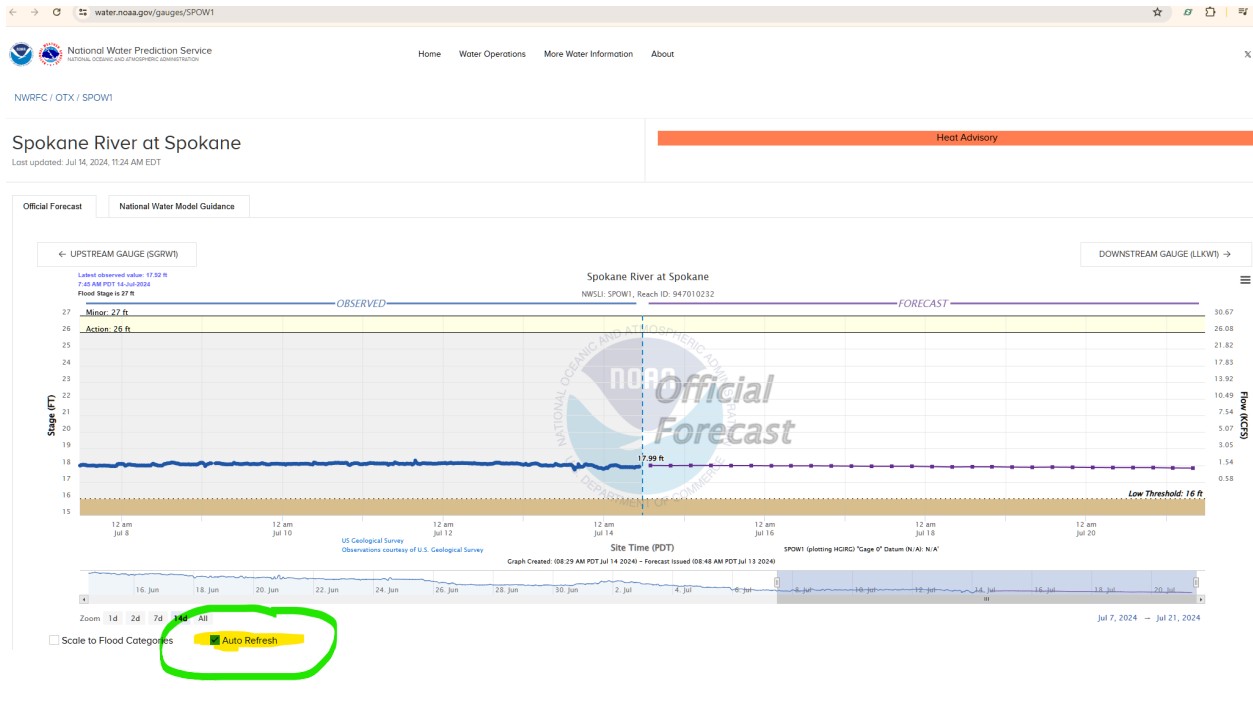
[https://water.noaa.gov/resources/hydrographs/harp1\\_hg.png](https://water.noaa.gov/resources/hydrographs/harp1_hg.png) (note: use lower case letters)



[https://water.noaa.gov/resources/hydrographs/harp1\\_record.png](https://water.noaa.gov/resources/hydrographs/harp1_record.png) (note: use lower case letters)

- **How to enable auto refresh**

- On the Individual gauge page (example: <https://water.noaa.gov/gauges/SPOW1>), below the hydrograph turn on/off the “Auto Refresh” check box.



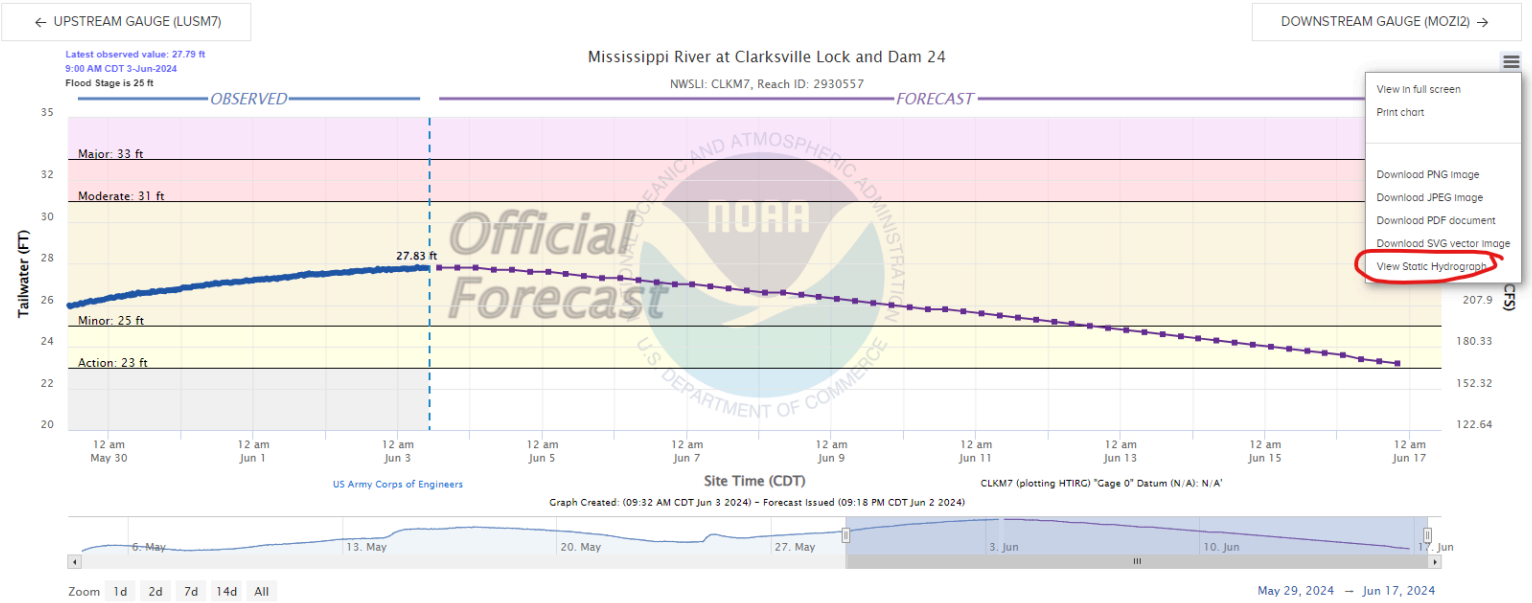
- **How to view the old style AHPS hydrographs on an NWPS gauge page**

- Click the right hamburger (three lines) button on the top right corner of the hydrograph. At the bottom you will see the “View Static Hydrograph” option. Choose that.
- **See image:**

# Mississippi River at Clarksville Lock and Dam 24

Last updated: Jun 3, 2024, 10:32 AM EDT

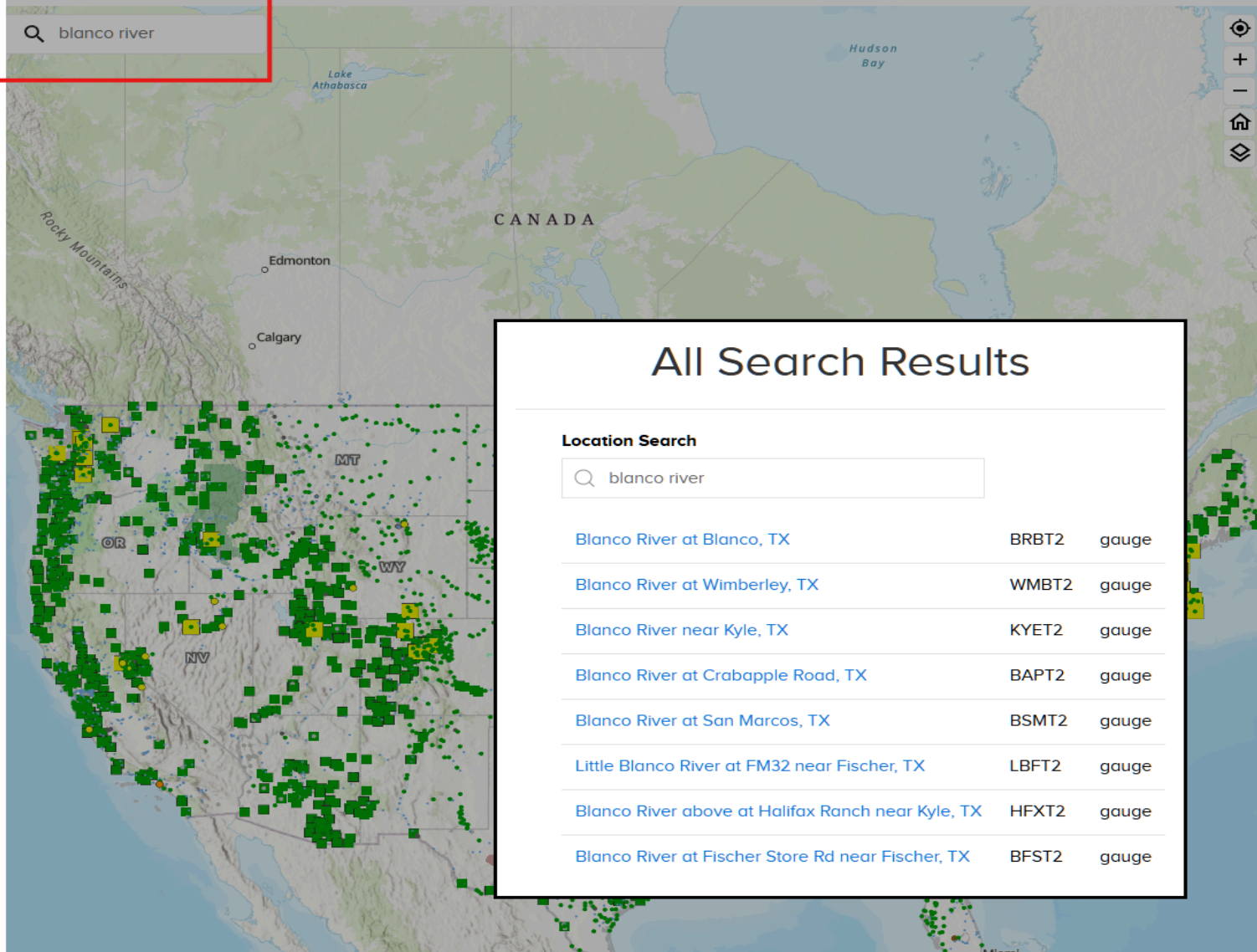
Official Forecast      National Water Model Guidance



- **Using the Search Bar**

- The Search bar can be a fast way to narrow your search. Use this bar to search for:
  - States
  - Weather Forecast Offices and River Forecast Centers
  - Listings of Rivers and River Gauges
  - Water Resources Regions
- More search functionality will be added in the future
- For Example here's a listing of all the river Gauges on the Blanco River in Texas:





Search Results for the "Blanco River"

# All Search Results

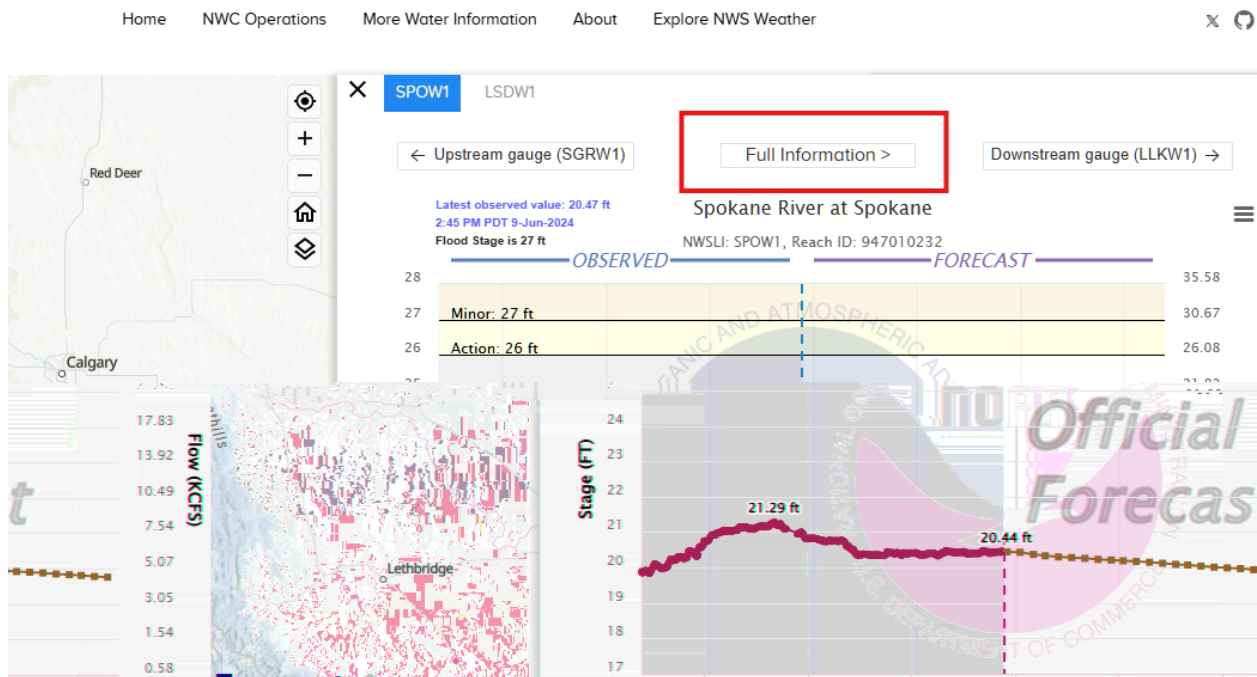
## Location Search

Corpus Christi	CRP	wfo
Carpinteria Creek near Carpinteria, CA	CPCC1	gauge
Copeland Creek at Copeland Creek, CA	OPKC1	gauge
California	CA	state
Charleston	CHS	wfo
Cleveland	CLE	wfo
Connecticut	CT	state
Cheyenne	CYS	wfo
Columbia	CAE	wfo
Caribou	CAR	wfo
Colorado	CO	state
Coyote Creek Metcalf, CA	CXMC1	gauge
Cottonwood Creek above Cottownwood Creek Auxillary, CA	CWAC1	gauge
Cherry Creek (CO) at Cherry Creek Reservoir, CO	EGDC2	gauge
Canyon Creek near Canyon City, OR	CNCO3	gauge
Calero Creek at Calero Reservoir, CA	CADC1	gauge
Calabazas Creek at Rainbow Creek, CA	CCQC1	gauge
Clear Creek (CO) near Empire, CO	CWCC2	gauge
Coal Creek (CO) near Plainview, CO	CCNC2	gauge
Calero Creek below Calero Dam, CA	CALC1	gauge
Calleguas Creek at CSUCI Bridge, CA	CLLC1	gauge
Calero Creek above Calero Reservoir, CA	CQIC1	gauge

Search result example typing the letter 'c'

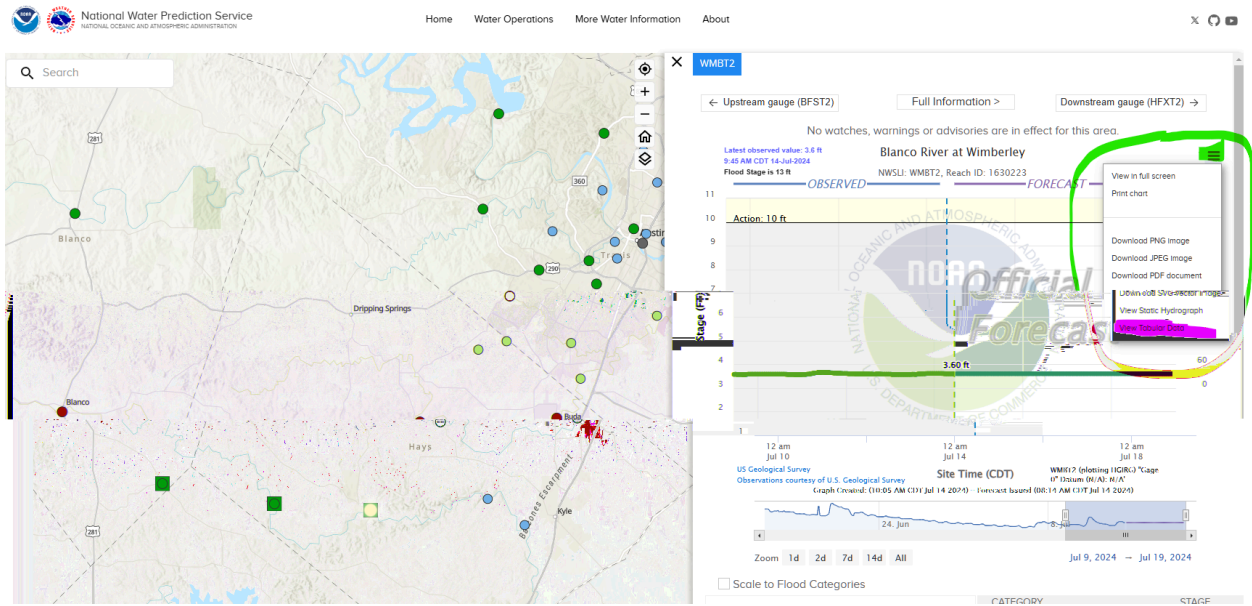
- **How to view detailed information for river gauges?**

- On the main map page you can see abbreviated information on any river gauge
- To see more detailed information, including impacts, mapping, and ensemble forecast information click above the hydrograph on the box titled “Full Information” . This will open a new window for that river gauge.



- **How to access the tabular data?**

- Tabular data is now available. On the River Gauge page click the three bars on the top right corner and choose “View Tabular Data”



water.noaa.gov/gauges/WMBT2/tabular

WGRFC / EWX / WMBT2

Hydrograph Table Data For WMBT2

Observed Data			Forecast Data		
VALIDTIME	PRIMARY	SECONDARY	VALIDTIME	PRIMARY	SECONDARY
7/14/2024, 10:15:00 AM CDT	3.6 ft	0.011 kcfs	7/14/2024, 8:00:00 AM CDT	3.6 ft	0.011 kcfs
7/14/2024, 10:10:00 AM CDT	3.6 ft	0.011 kcfs	7/14/2024, 9:00:00 AM CDT	3.6 ft	0.011 kcfs
7/14/2024, 10:05:00 AM CDT	3.6 ft	0.011 kcfs	7/14/2024, 10:00:00 AM CDT	3.6 ft	0.011 kcfs
7/14/2024, 10:00:00 AM CDT	3.6 ft	0.011 kcfs	7/14/2024, 11:00:00 AM CDT	3.6 ft	0.011 kcfs
7/14/2024, 9:55:00 AM CDT	3.6 ft	0.011 kcfs	7/14/2024, 12:00:00 PM CDT	3.6 ft	0.011 kcfs
7/14/2024, 9:50:00 AM CDT	3.6 ft	0.011 kcfs	7/14/2024, 1:00:00 PM CDT	3.6 ft	0.011 kcfs
7/14/2024, 9:45:00 AM CDT	3.6 ft	0.011 kcfs	7/14/2024, 2:00:00 PM CDT	3.6 ft	0.011 kcfs
7/14/2024, 9:40:00 AM CDT	3.6 ft	0.011 kcfs	7/14/2024, 3:00:00 PM CDT	3.6 ft	0.011 kcfs
7/14/2024, 9:35:00 AM CDT	3.6 ft	0.011 kcfs	7/14/2024, 4:00:00 PM CDT	3.6 ft	0.011 kcfs
7/14/2024, 9:30:00 AM CDT	3.6 ft	0.011 kcfs	7/14/2024, 5:00:00 PM CDT	3.6 ft	0.011 kcfs

Example of tabular data. The option to download a CSV file is available.

## NWS Weather Forecast Office Identifiers

### WFO ID ... WFO NAME

ABQ ... ALBUQUERQUE, NM

ABR ... ABERDEEN, SD

AFC ... ANCHORAGE, AK

AFG ... FAIRBANKS, AK  
AJK ... JUNEAU, AK  
AKQ ... WAKEFIELD, VA  
ALY ... ALBANY, NY  
AMA ... AMARILLO, TX  
APX ... NORTH CENTRAL LOWER MICHIGAN, MI (Gaylord)  
ARX ... LA CROSSE, WI  
BGM ... BINGHAMTON, NY (Johnson City)  
BIS ... BISMARCK, ND  
BMX ... BIRMINGHAM, AL (Alabaster)  
BOI ... BOISE, ID  
BOU ... DENVER/BOULDER, CO  
BOX ... BOSTON, MA (Taunton)  
BRO ... BROWNSVILLE, TX  
BTV ... BURLINGTON, VT  
BUF ... BUFFALO, NY (Cheektowaga)  
BYZ ... BILLINGS, MT  
CAE ... COLUMBIA, SC  
CAR ... CARIBOU, ME  
CHS ... CHARLESTON, SC  
CLE ... CLEVELAND, OH  
CRP ... CORPUS CHRISTI, TX  
CTP ... CENTRAL PENNSYLVANIA, PA (State College)  
CYS ... CHEYENNE, WY  
DDC ... DODGE CITY, KS  
DLH ... DULUTH, MN  
DMX ... DES MOINES, IA (Johnston)  
DTX ... DETROIT, MI (White Lakes)  
DVN ... QUAD CITIES, IA (Davenport)  
EAX ... KANSAS CITY, MO (Pleasant Hill)  
EKA ... EUREKA, CA  
EPZ ... EL PASO, TX (Santa Teresa)  
EYW ... KEY WEST, FL  
EWX ... AUSTIN/SAN ANTONIO, TX (New Braunfels)  
FFC ... ATLANTA, GA (Peachtree City)  
FGF ... EASTERN NORTH DAKOTA, ND (Grand Forks)  
FGZ ... FLAGSTAFF, AZ (Bellemont)  
FSD ... SIOUX FALLS, SD  
FWD ... DALLAS/FORT WORTH, TX  
GGW ... GLASGOW, MT  
GID ... HASTINGS, NE  
GJT ... GRAND JUNCTION, CO

GLD ... GOODLAND, KS  
GRB ... GREEN BAY, WI  
GRR ... GRAND RAPIDS, MI  
GSP ... GREENVILLE/SPARTANBURG, SC (Greer)  
GUA ... GUAM, GU  
GYX ... PORTLAND, ME  
HFO ... Honolulu, HI  
HGX ... HOUSTON/GALVESTON, TX (Dickinson)  
HNX ... SAN JOAQUIN VALLEY, CA (Hanford)  
ICT ... WICHITA, KS  
ILM ... WILMINGTON, NC  
ILN ... CINCINNATI, OH  
ILX ... CENTRAL ILLINOIS, IL (Lincoln)  
IND ... INDIANAPOLIS, IN  
IWX ... NORTHERN INDIANA, IN (Syracuse)  
JAN ... JACKSON, MS  
JAX ... JACKSONVILLE, FL  
JKL ... JACKSON, KY  
LBF ... NORTH PLATTE, NE  
LCH ... LAKE CHARLES, LA  
LIX ... NEW ORLEANS/BATON ROUGE, LA (Slidell)  
LKN ... ELKO, NV  
LMK ... LOUISVILLE, KY  
LOT ... CHICAGO, IL (Romeoville)  
LOX ... LOS ANGELES, CA (Oxnard)  
LSX ... ST. LOUIS, MO (St Charles)  
LUB ... LUBBOCK, TX  
LWX ... BALTIMORE, MD/WASHINGTON, DC (Sterling)  
LZK ... LITTLE ROCK, AR  
MAF ... MIDLAND/ODESSA, TX  
MEG ... MEMPHIS, TN  
MFL ... MIAMI, FL  
MFR ... MEDFORD, OR  
MHX ... MOREHEAD CITY, NC (Newport)  
MKX ... MILWAUKEE, WI (Dousman)  
MLB ... MELBOURNE, FL  
MOB ... MOBILE, AL  
MPX ... MINNEAPOLIS, MN (Chanhassen)  
MQT ... MARQUETTE, MI (Negaunee)  
MRX ... KNOXVILLE/TRI-CITIES, TN (Morristown)  
MSO ... MISSOULA, MT  
MTR ... SAN FRANCISCO BAY AREA, CA (Monterey)

OAX ... OMAHA, NE (Valley)  
OHX ... NASHVILLE, TN (Old Hickory)  
OKX ... NEW YORK CITY, NY  
OTX ... SPOKANE, WA  
OUN ... OKLAHOMA CITY, OK (Norman)  
PAH ... PADUCAH, KY  
PBZ ... PITTSBURGH, PA (Coraopolis)  
PDT ... PENDLETON, OR  
PHI ... PHILADELPHIA, PA (Mt Holly)  
PIH ... POCATELLO/IDAHO FALLS, ID  
PQR ... PORTLAND, OR  
PSR ... PHOENIX, AZ  
PUB ... PUEBLO, CO  
RAH ... RALEIGH/DURHAM, NC  
REV ... RENO, NV  
RIW ... RIVERTON, WY  
RLX ... CHARLESTON, WV  
RNK ... ROANOKE, VA  
SEW ... SEATTLE/TACOMA, WA  
SGF ... SPRINGFIELD, MO  
SGX ... SAN DIEGO, CA  
SHV ... SHREVEPORT, LA  
SJT ... SAN ANGELO, TX  
SJU ... SAN JUAN, PR (Carolina)  
SLC ... SALT LAKE CITY, UT  
STO ... SACRAMENTO, CA  
TAE ... TALLAHASSEE, FL  
TBW ... TAMPA BAY AREA, FL (Ruskin)  
TFX ... GREAT FALLS, MT  
TOP ... TOPEKA, KS  
TSA ... TULSA, OK  
TWC ... TUCSON, AZ  
UNR ... RAPID CITY, SD  
VEF ... LAS VEGAS, NV

---

## **NWS River Forecast Center Identifiers**

### **RFC ID ... RFC NAME**

ACR ... ALASKA-PACIFIC RFC (Anchorage)  
ALR ... SOUTHEAST RFC (Peachtree City)  
FWR ... WEST GULF RFC (Fort Worth)  
KRF ... MISSOURI BASIN RFC (Pleasant Hill)  
MSR ... NORTH CENTRAL RFC (Chanhassen)

ORN ... LOWER MISSISSIPPI RFC (Slidell)  
PTR ... NORTHWEST RFC (Portland)  
RHA ... MIDDLE ATLANTIC RFC (State College)  
RSA ... CALIFORNIA-NEVADA RFC (Sacramento)  
STR ... COLORADO BASIN RFC (Salt Lake City)  
TAR ... NORTHEAST RFC (Taunton)  
TIR ... OHIO RFC (Wilmington)  
TUA ... ARKANSAS-RED BASIN RFC (Tulsa)

---

.END OF DOCUMENT.