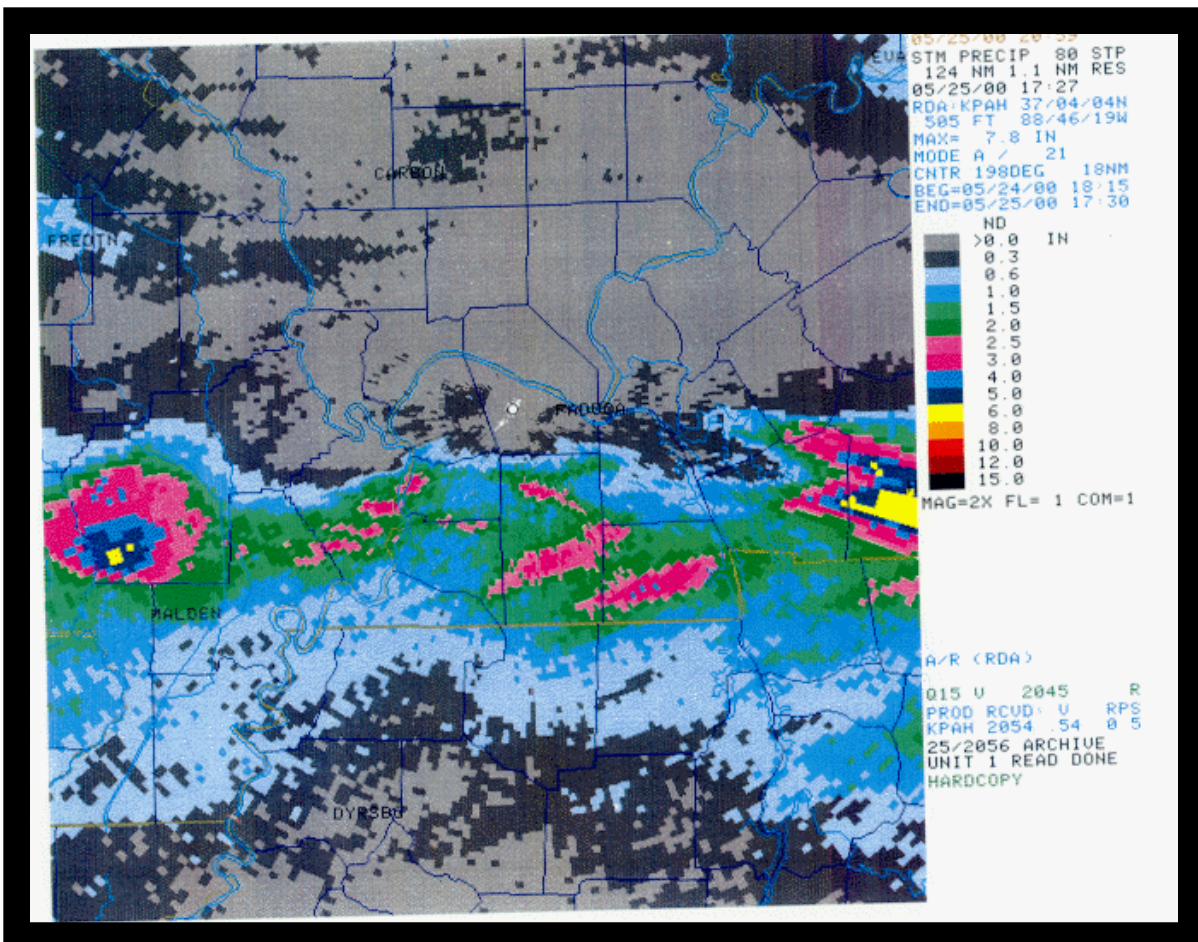


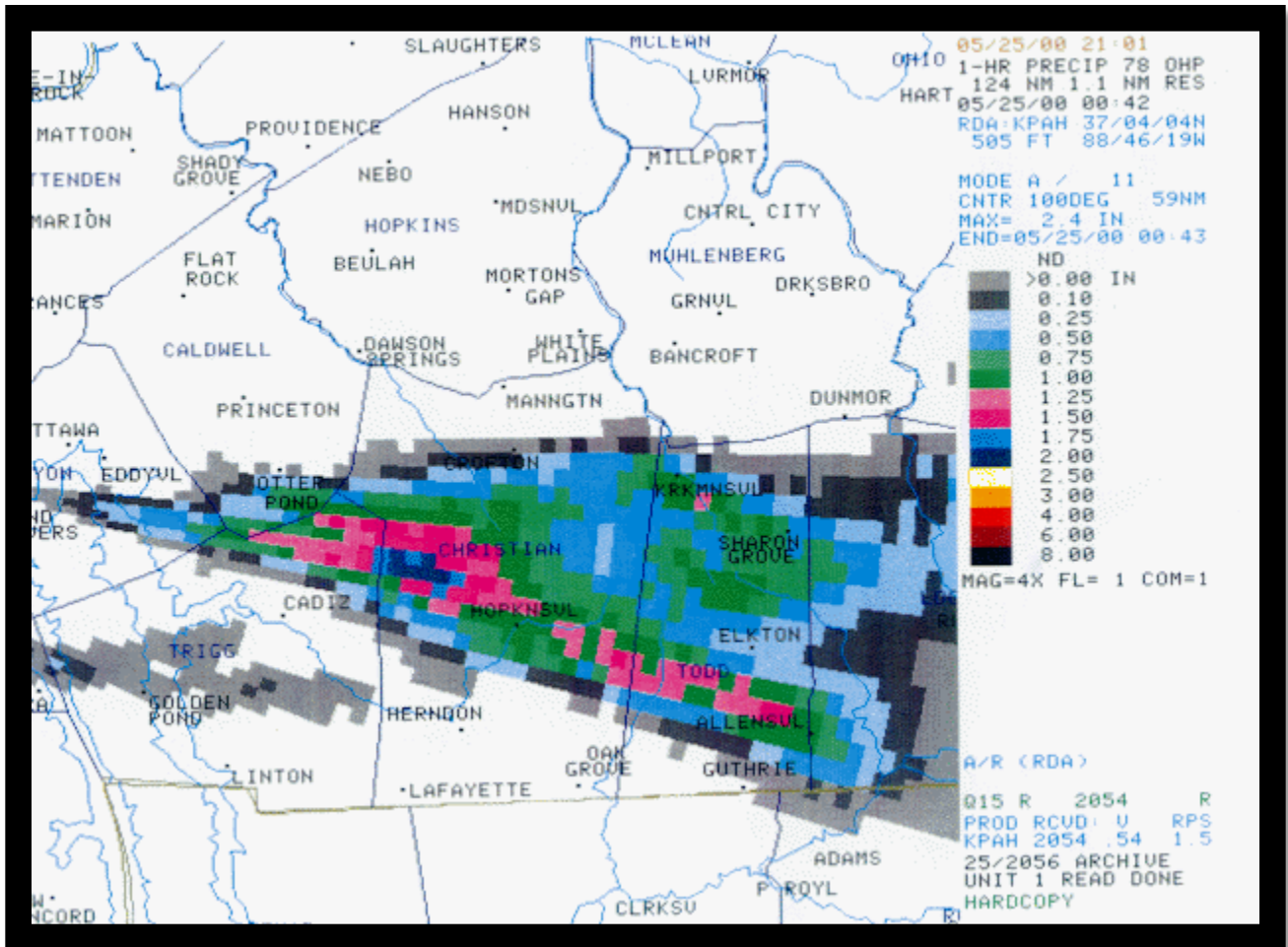
## Storms of May 24, 2000

**Overview:** The same front that produced severe storms on the evening of May 23 became nearly stationary along the Ohio River into southeast Missouri on the 24th. Atmospheric conditions during the evening of the 24th were similar to the previous day. The atmosphere was warm, humid, and very unstable. Wind profiles were somewhat weaker than the previous day, with mid level winds northwest around 40 knots. Closer to the surface, the flow was much weaker, with southwest to west winds only around 10 knots. Although not quite as favorable as the previous day, there was still some potential for tornadoes, and the Storm Prediction Center issued Tornado Watch Number 342 for western Kentucky and parts of southern Illinois at 5:50 P.M. This was later followed by Severe Thunderstorm Watch Number 344 for southeast Missouri, issued at 7:05 P.M.

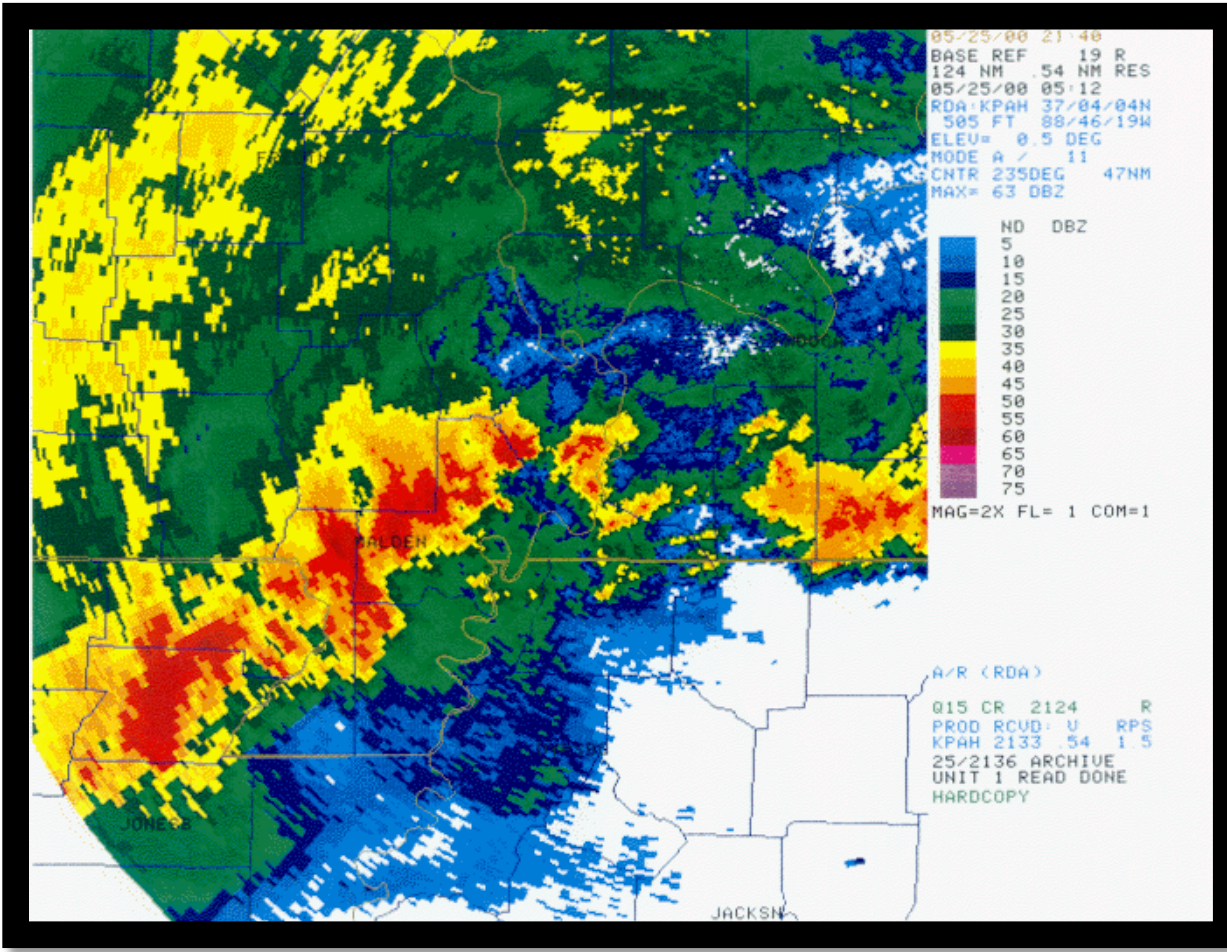
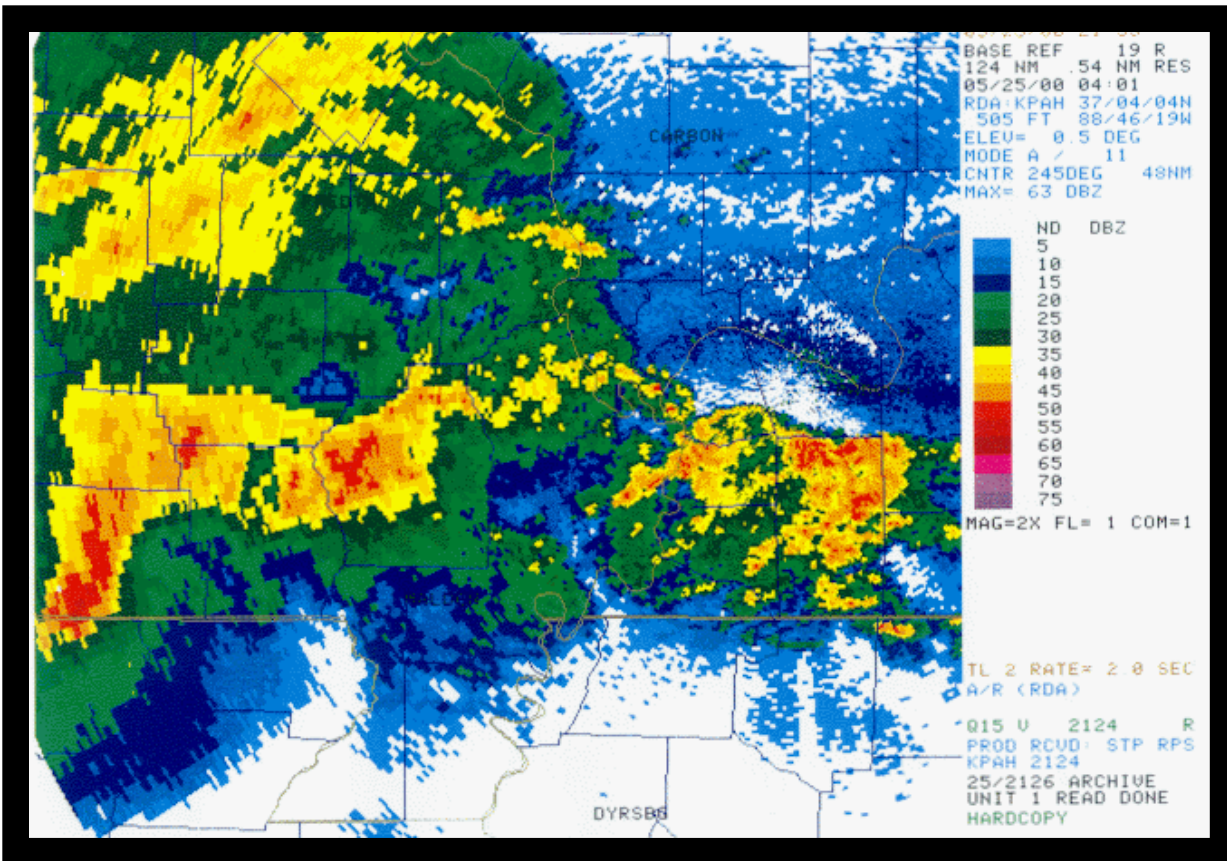
**Radar Images and Storm Evolution:** Thunderstorms developed all along the cold front during the early evening. The storms moved slowly eastward along the front for hours. As a result, some locations along the front got multiple bursts of heavy rain, and a Flash Flood Watch was issued for much of west Kentucky and southeast Missouri. The radar image below is a radar-estimated "Storm Total Precipitation" product. Although hail can contaminate the accuracy of the radar-estimated rainfall amounts, they are still useful for flash flood forecasting. Notice the east-west orientation of the heavy rainfall amounts, which corresponds closely to the location of the cold front. The yellow shading in the Hopkinsville area (far right edge) denotes estimates over 6 inches. A television station in Hopkinsville reported measuring 10 inches. There were numerous reports of flooded roads in Christian County, including Hopkinsville.



The radar can also produce hourly rainfall estimates. The image below is the one-hour rainfall estimate from 6:42 to 7:42 P.M. Again, hail likely contaminated the estimates, but this product showed where there was the potential for flash flooding. The scale on the right side of the chart indicates up to 2 inches of rain per hour in west central Christian County, about 10 miles west-northwest of Hopkinsville.



During the course of the evening, hail up to golf ball size was reported, and there were widely scattered reports of wind damage. The most significant and long-lived wind event occurred over extreme southeast Missouri. A severe thunderstorm complex tracked east along the Arkansas border, passing through Ripley County around 11 P.M. and reaching New Madrid County shortly after midnight. Numerous trees were down in Ripley County, winds of 60 to 70 MPH were reported in southwest Butler County, and there was some roof damage along with downed trees and power lines in southwest New Madrid County. The first radar image below indicates the storms as they swept through Ripley County, and the second shows them over New Madrid County.



**KENTUCKY:**

**Muhlenberg County**

**Bremen** 24 1650CST 0 0 Hail (1.00)

**Christian County**

**3 W Hopkinsville** 24 1735CST 0 0 2K Thunderstorm Wind  
A few trees were down.

**Trigg County**

**2 E Rockcastle** 24 1740CST 0 0 Hail (1.75)

**Trigg County**

**2 E Rockcastle** 24 1740CST 0 0 4K Thunderstorm Wind  
Large trees were blown down.

**Todd County**

**1 N Elkton** 24 1754CST 0 0 Hail (0.75)

**Flash Flood** **Trigg County** **Cerulean** 24 1840CST 0 0  
2220CST

**Flash Flood** **Todd County** **Trenton** 24 1845CST 0 0  
2220CST

County, Muhlenberg County, Christian County, Trigg County, Todd County, and Boone County. The storm system was observed from the Trigg County line across western Christian County. The funnel cloud was observed from Gracey to Herndon in Christian County. The most significant feature of this storm was flash-flood producing rain.

County, Muhlenberg County, Christian County, Trigg County, Todd County, and Boone County. The storm system was observed from the Trigg County line across western Christian County. The funnel cloud was observed from Gracey to Herndon in Christian County. The most significant feature of this storm was flash-flood producing rain.

**Christian County**

**Gracey to 3 NW Herndon** 24 1835CST 0 0 Funnel Cloud  
1841CST

A funnel cloud moved southeast from the Trigg County line across western Christian County. The funnel cloud was observed from Gracey to Herndon in Christian County. The most significant feature of this storm was flash-flood producing rain.

**Todd County**

**3 N Allegre** 24 1839CST 0 0 Hail (1.75)

**Christian County**

**Julien** 24 1900CST 0 0 Lightning

Lightning was the indirect cause of a house fire that killed 3 children and their father. The fire was sparked by an unattended candle which was being used because of a power outage.

**Graves County**

**Folsomdale** 24 2125CST 0 0 5K Thunderstorm Wind

Several trees were down across Highways 408, 849, and Meridian Road.

**Christian County** **Waverly** 24 2218CST 0 0  
2218CST  
Several trees were blown down.

**Flash Flood** **Christian County** **Waverly** 24 2218CST 0 0  
2218CST

**Flash Flood** **Christian County** **Central Portion** 24 2335CST 25 0245CST

24 2335CST 25 0245CST

0 0

Flash Flood

24 2335CST 25 0245CST

Christian County Emergency Management reported water rose several feet above normal levels of many river pools were reached by emergency personnel from cars that stalled in flooded areas. A few houses were in danger. The Murray-Holloway County hospital among which is a fire-prone location, experienced some flooding. In Murray, the bridges over Spring Creek Oaks washed out. Parts of Christian and Trigg Counties that were already water-logged from rains earlier in the night received an estimated additional inch or so.

## MISSOURI:

<b>Wayne County</b> Lodi	24	0718CST 0720CST	0	0		<b>Funnel Cloud</b>
Emergency managers observed a funnel cloud in the Lodi area, which at times extended more than halfway to the ground						
<b>Carter County</b> 5 SW Van Buren	24	2000CST	0	0	3K	<b>Thunderstorm Wind</b>
A few trees were down along B Highway.						
<b>Stoddard County</b> 1.5 W Dexter to 1 W Bernie	24	2028CST 2034CST	0	0		<b>Hail (1.75)</b>
Golf ball size hail fell near 1.5 miles west of Dexter, and dime-size hail fell just west of Bernie						
<b>Ripley County</b> Countywide	24	2200CST 2230CST	0	0	100K	<b>Thunderstorm Wind</b>
A line of severe thunderstorms that moved east across Ripley County produced 60 to 70 MPH winds in southwest Ripley County. At least a portion of the highway was damaged, which is the road and travel will be disrupted and it will take several days to repair about 20 damaged danger zones. Ripley County was not fully checked for impact						
<b>Butler County</b> Neelyville	24	2230CST 2237CST	0	0		<b>Thunderstorm Wind (G55)</b>
The line of severe thunderstorms that moved east across Ripley County produced 60 to 70 MPH winds in southwest Butler County						
<b>Stoddard County</b> Chancellor	24	2210CST 0900CST	0	0		<b>Hail (1.00)</b>
A line of severe thunderstorms that moved east across Stoddard County produced 60 to 70 MPH winds in southwest Stoddard County. At least a portion of the highway was damaged, which is the road and travel will be disrupted and it will take several days to repair about 20 damaged danger zones. Stoddard County was not fully checked for impact						
<b>New Madrid County</b> Gideon to Portageville	24	2310CST 2340CST	0	0	30K	<b>Thunderstorm W</b>
A line of severe thunderstorms produced damaging straight-line winds, mainly over southern parts of the county. roof was blown off a house, a barn was blown down, and there were several trees and power lines down. Power lin Gideon, causing some extended power outages that lasted into the next day. A couple of trees were down at Portage						