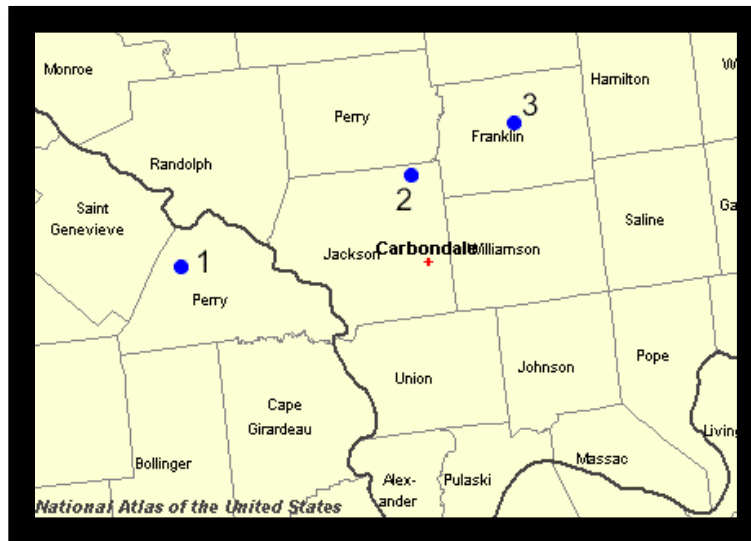


# Severe Weather Outbreak of October 24, 2001

Damaging thunderstorm winds caused about 1.5 million dollars in damage across the region. At least 16 persons were injured. The bulk of the damage and injuries were north of a line from Cape Girardeau, Missouri to Evansville, Indiana. A few weak tornadoes were confirmed. Damage surveys revealed that several of the microbursts and tornadoes contained wind speeds in the 80 to 100 MPH range.

Early on the morning of October 24, the Paducah National Weather Service office issued a Hazardous Weather Outlook that stated there was a high risk of severe thunderstorms during the next 12 to 18 hours. Prior to the arrival of storms in our area, the Storm Prediction Center issued Tornado Watch 797 and Tornado Watch 798, covering the entire county warning area of our office.

Approximately 72 damaging wind, tornado, and large hail events occurred during the afternoon and early evening hours. This is the most severe weather events recorded by the Paducah office in a single day, at least since the modernized Paducah office was opened in late 1994. Straight-line severe thunderstorm winds produced the majority of damage and injuries. About 10 persons were injured, and preliminary damage estimates were approaching one million dollars. The wind speeds in a few confirmed tornadoes were about the same as the damaging straight-line winds, between 70 and 90 MPH. Areas north of a line from Perryville, Missouri to Evansville, Indiana appeared to sustain the most widespread damage. A local storm report detailed the vast majority of severe weather reports received on October 24. The following mapped damage areas were those that National Weather Service survey teams investigated.



Damage area 1: 2:25 P.M.- Near Brewer, Missouri, winds estimated around 70 MPH took the roofs off two buildings near I-55. Numerous trees and power lines were down. The roof was blown off a mobile home 5 miles west of Brewer.

Damage area 2: 3:00 P.M.- At Dowell and Vergennes, Illinois, winds estimated between 60 and 70 MPH downed trees and utility poles. A camper was blown off the road. Buildings and vehicles were damaged, mainly by falling trees. Damage was reported in other areas of Jackson County, as well. Roofs were reportedly blown off.

Damage area 3: 3:10 P.M.- At Benton, Illinois, winds estimated between 70 and 90 MPH caused extensive damage in at least one subdivision. A porch was blown away. Four sheds were destroyed or heavily damaged. A pole barn was destroyed 4 miles east of Benton. Heavy damage was also reported in other parts of Franklin County, especially West Frankfort and Royalton.



Damage area 1: 3:40 P.M.- At Springerton, Illinois, a weak tornado with 75 MPH winds downed numerous trees and power lines. Roofs were blown off several homes. Machine sheds were blown away. Falling trees damaged a number of homes and vehicles. A new home under construction was destroyed just west of Springerton.

Damage area 2: 4:15 P.M.- At East Mt. Carmel, Indiana, one person was injured when their home was destroyed by toppling trees. Winds were up to 75 MPH. Two other homes were damaged, and billboards, trees, and power lines were down.

Damage area 3: 4:35 P.M.- At Petersburg, Indiana, a weak tornado with 75 MPH winds blew the roof off a house. A mobile home was blown from its foundation. A number of other homes and businesses in Petersburg sustained significant damage.



Damage area 1: 3:50 P.M.- Near Lusk, Missouri, a weak to moderate tornado with peak winds from 80 to 90 MPH caused extensive damage. Five sheds were destroyed or damaged, a trailer home was damaged, and a light pole was down.

Damage area 2: 4:10 P.M.- Near Kevil, Kentucky, winds of 80 to 90 MPH overturned a couple of mobile homes. Two occupants were injured, but not seriously. Several other mobile homes in the same park received varying degrees of damage.

# RADAR IMAGERY

The following radar images were at one-hour intervals during the severe storm event, beginning at 2:25 P.M. and ending at 6:25 P.M. CDT.

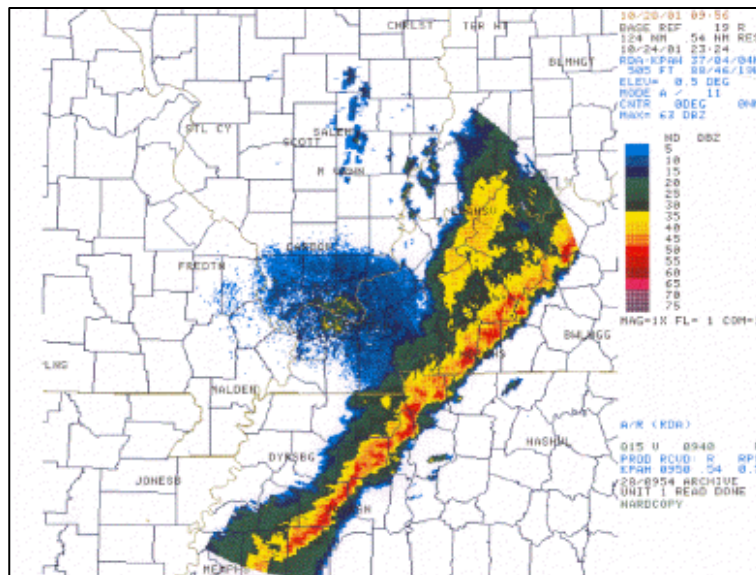
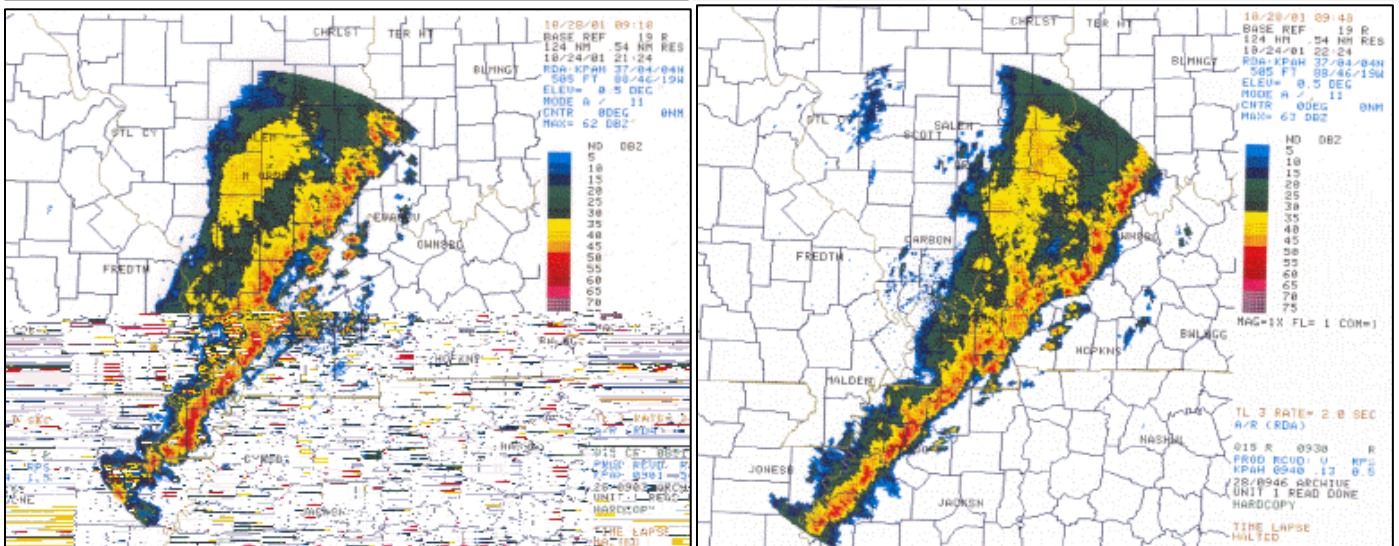
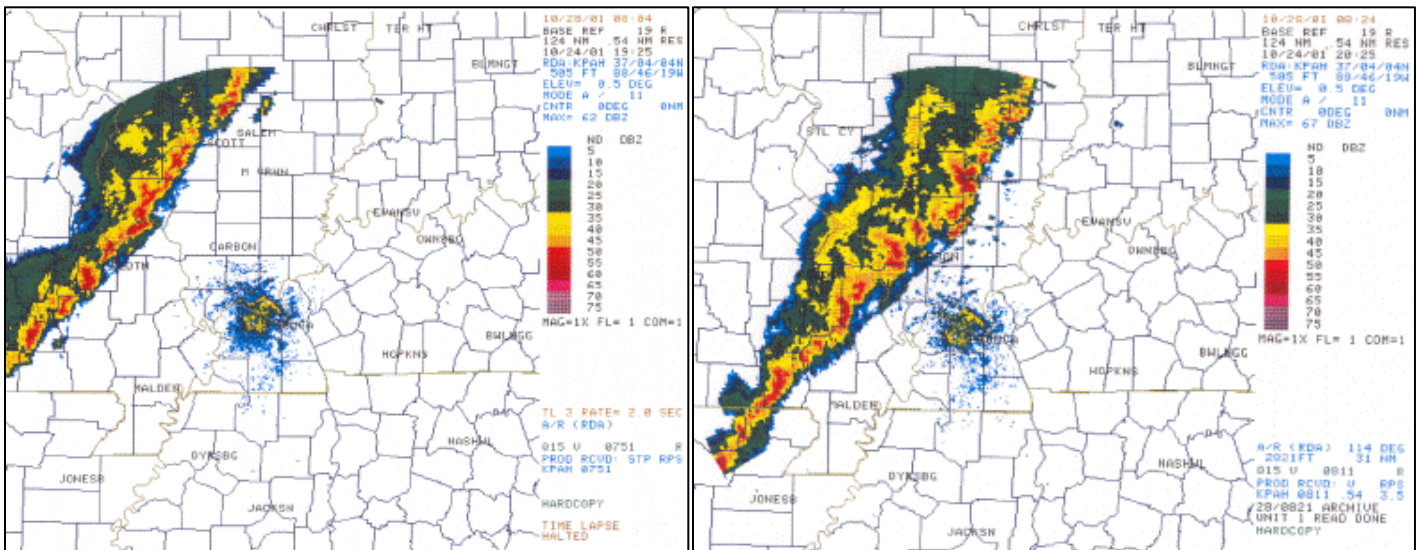




Photo taken at Dowell, Illinois, in northern Jackson County. Courtesy of Jeff Proffitt.