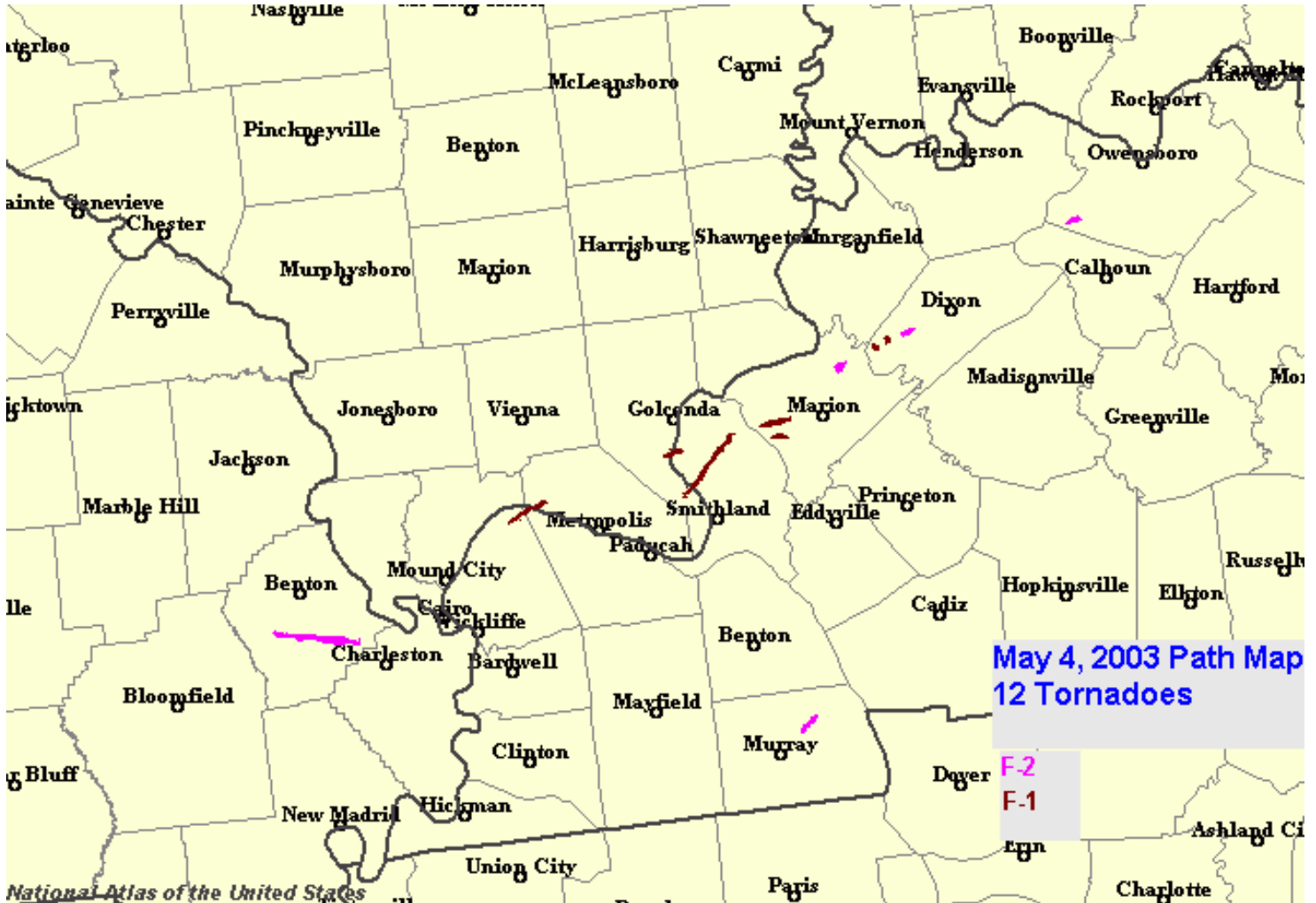


STORM DAMAGE ASSESSMENTS FOR THE MAY 4, 2003 EVENT

The final reports on the May 4 severe weather events, including tornado locations and intensities, is available in the monthly publication "Storm Data." The tornado entries are listed below the map.



Ballard County

2.4 NE Monkeys Eyebrow 04 2043CST 2.5 30 0 0 Tornado (F0)
6 ENE Monkeys Eyebrow 2047CST

This tornado touched down in bottomland along the Ohio River, downing about a half dozen trees. The tornado proceeded to cross the Ohio River into Illinois.

Massac County

1 WNW Joppa to 04 2047CST 1.4 100 0 0 Tornado (F1)
.7 NW Joppa 2050CST

This tornado, which crossed the Ohio River from Kentucky, moved an anchored barge from its moorings. It flipped over a work trailer and downed numerous trees and power lines. There was minor damage to other trailers. Three concrete slabs, each weighing 500 pounds, were moved from their positions on top of silos. Estimated peak winds were 95 MPH.

Pope County

6 SSW Golconda to 04 2109CST 1.2 50 0 0 Tornado (F1)
5.2 S Golconda 2111CST

The tornado began one to two miles south of the "Ropers Landing" community on the Ohio River, then crossed the river into Kentucky. Extensive tree damage was observed along a bluff on the river. The damage path extended to the river bank.

Livingston County

6 NW Birdsville to 04 2111CST 1 30 0 0 Tornado (F1)
6.3 NNW Birdsville 2112CST

The tornado crossed the Ohio River from Pope County, Illinois and ended on the west side of Highway 137. A number of trees were blown down.

Pope County

2 SE Bay City 04 2110CST 0.2 40 0 0 8K Tornado (F1)

The tornado first touched down along the Ohio River near the small community of Bay City, then crossed the Ohio River into Kentucky. In and near Bay City, large trees up to 4 feet in diameter were blown down. Some barns and fences were damaged.

A long-lived supercell thunderstorm crossed the Mississippi River about 10 miles northwest of Cairo, then moved east along the Ohio River. While crossing the southernmost tip of Illinois, this storm was responsible for three tornadoes, large hail up to the size of golf balls, and damaging winds.

Livingston County

2.5 NW Birdsville to 04 2110CST 9.6 60 0 0 Tornado (F1)
1.5 SW Lola 2126CST

The tornado crossed the Ohio River near Birdsville, tracked northeast across Hampton, then dissipated before reaching Lola. Numerous large trees were blown down. Grain bins were destroyed. The few homes in the path of the tornado sustained roof damage.

Crittenden County

4.3 W Sheridan to 04 2130CST 5.5 30 0 0 Tornado (F1)
1 SE Sheridan 2138CST

The tornado downed numerous trees.

Crittenden County

2.5 SW Sheridan to 04 2132CST 2 40 0 0 Tornado (F1)
1.5 SSW Sheridan

The damage from this tornado consisted mostly of downed trees.

Crittenden County

.6 NE Mattoon to 04 2145CST 0.2 25 0 1 Tornado (F2)
.8 NE Mattoon

A mobile home was destroyed, and there was significant damage to a permanent home. The occupant of the mobile home received minor injuries. A barn was destroyed, and numerous trees and power lines were down. Peak winds were estimated near 120 MPH.

Webster County
4 WSW Clay

04 2153CST 0.2 20 0 0 Tornado (F1)

This tornado occurred on Highway 143 just south of Highway 109 at an orchard. Numerous small trees were blown down. An old barn was destroyed, and a house received minor damage. Peak winds were estimated near 105 MPH.

Webster County
2 W Clay

04 2156CST 0.2 25 0 0 350K Tornado (F1)

Three large chicken houses were destroyed at a chicken farm on the south side of Highway 109. Peak winds were estimated near 105 MPH. The houses contained about 100,000 chickens, most of which survived.

Webster County
.7 W Clay to
.7 E Clay

04 2158CST 1.5 75 0 1 1M Tornado (F2)
2200CST

In Clay, 6 homes and 2 businesses were destroyed. An additional 45 homes and 4 businesses received varying degrees of damage, ranging from minor to major. A woman was injured when a tree fell and landed on her, breaking her hip. Peak winds were estimated near 125 MPH. One of the destroyed businesses was a hardware store. The other business, on the north side of Clay, housed spring planting supplies. That business lost four metal buildings. Numerous trees and power lines were blown down.

A severe thunderstorm produced a series of tornadoes across Livingston, Crittenden, and Webster Counties. Both tornadoes in Livingston County originated on the Illinois side of the Ohio River. The strongest tornadoes occurred from Mattoon to Clay, where F2 damage was observed in spots.

Calloway County
6 NE Murray to
7.8 NE Murray

04 2130CST 1.8 60 0 0 350K Tornado (F2)
2137CST

The tornado began along Highway 732 about one quarter mile east of Highway 94. It then moved northeast, roughly parallel to Highway 94, for almost two miles. Six homes received minor to moderate damage. Numerous trees were down, two barns were destroyed, and several others were damaged. Peak winds were estimated near 120 MPH.

Daviess County
2.5 S St Joseph

04 2245CST 0.2 25 0 2 75K Tornado (F2)
2246CST

A mobile home was destroyed, injuring two persons. A boy received a broken arm, and a girl suffered a broken back. Several barns and garages were blown down, and a garage was pushed off its foundation. One permanent home received minor damage.

Scott County
.5 S Morley to
1 SW Lusk

04 1953CST 11.5 130 0 0 75K Tornado (F2)
2005CST

One mobile home was destroyed. Several small buildings were damaged. Numerous trees were blown down or damaged. Several irrigation systems were moved and/or turned over. Peak winds in the tornado were estimated near 130 MPH.

Severe thunderstorms produced dime to nickel size hail in isolated locations from around Poplar Bluff west. The storms then organized into a single tornadic supercell just northeast of Poplar Bluff. This long-lived supercell moved east, passing between Cape Girardeau and Sikeston, then continued east-northeast through the Lower Ohio River Valley. The supercell produced a tornado in Scott County. Trees were blown down at Wappapello in southeast Wayne County.

PICTURES:

SCOTT COUNTY MO

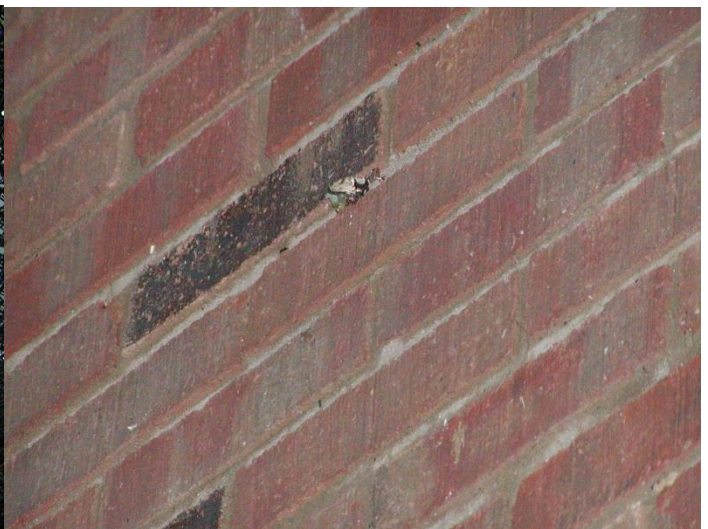


CALLOWAY COUNTY KY





Projectiles...



DAVISS COUNTY KY



CRITTENDEN-WEBSTER COUNTIES KY

CLAY KY



MATTOON KY

