

...Significant flash flooding occurred over the Evansville area and parts of Wabash County Illinois the night of July 16th...

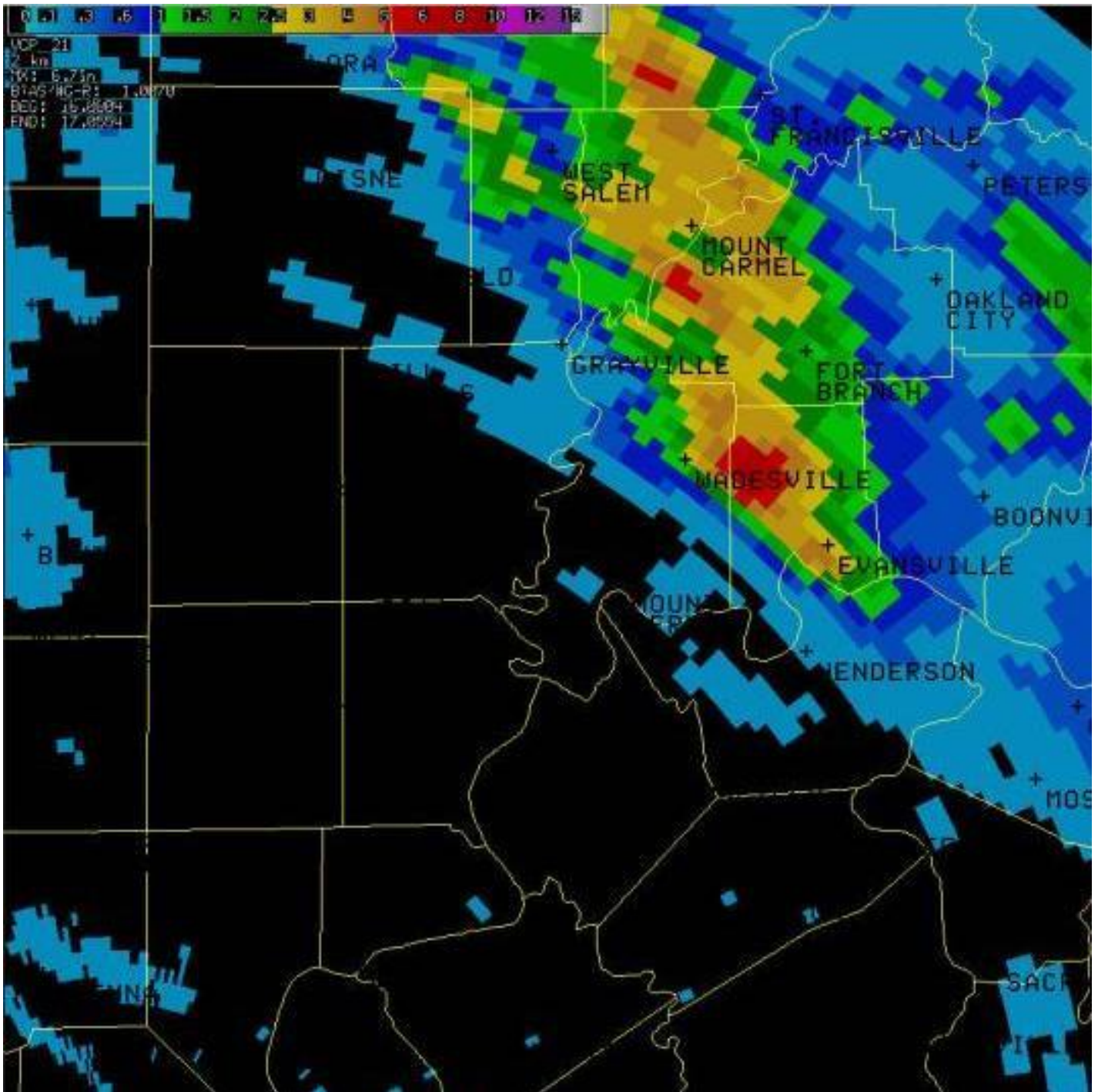
Widespread street flooding occurred in Vanderburgh County after 5 to 10 inches of rain fell in a couple of hours. The rain began at Evansville about 10:30 P.M., and by midnight measured 1.47 inches at the Evansville airport. Radar indicated considerably heavier rainfall rates over downtown Evansville and western Vanderburgh County.

The following are some radar images of the event:

One-hour rainfall amounts ending at 12:45 A.M. July 17, as estimated by the Paducah radar. The rates compared well to actual observations at the airport. The orange shades correspond to 3 inches per hour, yellow is about 2 inches, and purple shades are 1.5 to 2 inches. Green and blue shades are one-half to 1.5 inches.



Below is the "storm-total" rainfall estimate ending at 1 A.M. (Additional heavy rain fell after this time). The shades of red indicate 5-plus inches. Yellow and gold colors indicate 2.5 to 5 inches. Green shades indicate 1 to 2.5 inches.



Heavy rain producing thunderstorms repeatedly developed over the lower Wabash Valley, then moved southeast across the Evansville metro area. Below is a radar image at about 12:30 A.M. Movement of the storms was southeast at 15 to 20 MPH. Interstates and parkways are shown on the map in yellow. Magenta dashes are lightning strikes in the past 15 minutes.



The Vanderburgh county EMA reported 175 to 200 residential structures were affected by the flooding. In one trailer park alone, 150 homes were evacuated with the water 6 feet deep in places. In the downtown area, 35 homes were affected by the flooding. No dollar damage estimates were available.

Storm Data Reports:

Gibson County

**Johnson to
2 E Owensville**

**16 2224CST
17 0500CST**

0 0 15K

Flash Flood

A number of roads were flooded, including a couple of primary roads. Roads that remained flooded after the rain ended included Highway 168, County Road 350S, and County Road 400W. Many county roads were washed out, and several were closed. Several motorists were stranded in floodwaters. The heaviest rain and most of the flooding was in the southwest and south central part of the county, mainly west of Fort Branch.

Vanderburgh County

Countywide

**16 2313CST
17 0500CST**

0 0

Flash Flood

About 180 residences were damaged or affected by severe flash flooding. Street flooding was widespread. Numerous cars stalled on flooded roadways. Some motorists abandoned their vehicles, especially at the Virginia Street and Diamond Avenue viaducts. Water was four feet deep at the intersection of St. Joseph and Mill, and officials reported up to six feet of water in other spots. Mill Creek was reportedly 4 to 5 feet above bankfull. Extreme flash flooding on Locust Creek inundated a manufactured and mobile home park near McCutchanville, where 5 residences sustained major damage, 10 had minor damage, and 135 were affected. About 150 vehicles were submerged to a depth of at least four feet. 26 residences were evacuated by fire department boats, and the Red Cross activated a shelter for the evacuees. Within the Evansville city limits, about 30 homes were damaged by floodwaters, mostly in two "repetitive-loss" neighborhoods. In the "Five Points" neighborhood in Evansville, two homes sustained major damage, four had minor damage, and three were affected (water in crawlspace or basement). In the Dexter neighborhood of Evansville, one house received major damage and was uninhabitable. Nineteen other homes had minor flood damage, with water in the basement or slightly onto the first floor. In addition, two vehicles were heavily damaged when the motors became submerged. An unofficial rainfall total of 4.88 inches was received from downtown Evansville. Based on radar estimates and a couple of rainfall reports, the city of Evansville and much of western Vanderburgh County received four to eight inches of rain over a 5-hour time span.

Wabash County

Countywide

**16 2154CST
17 0330CST**

0 0

Flash Flood

Lots of streets were flooded in Mount Carmel, including one street that was impassable. North and west of Mount Carmel, rural roads were reported to have plenty of water over them, and one was closed.

Thunderstorms continually regenerated over southeast Illinois and moved southeast across the lower Wabash Valley. Rainfall totals were estimated around four inches during a time span of several hours.