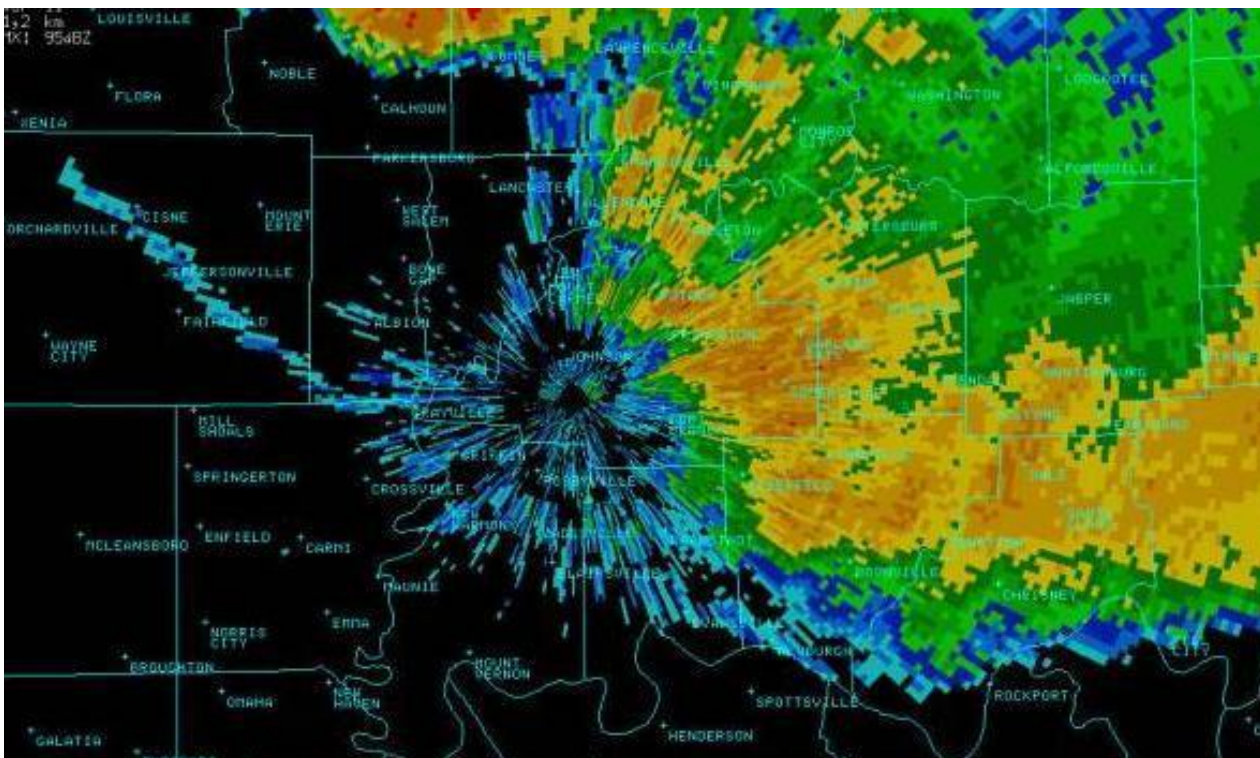


...Wind Damage Across the Evansville Tri-State Area on July 13...

For about the fourth time since late May, significant wind damage raked parts of the Evansville Tri-State, particularly the city of Owensboro. A complex of severe thunderstorms moved rapidly south at close to 60 MPH across eastern Illinois and western Indiana, then passed through the Pennyrile region of western Kentucky on its way into Tennessee.

- Much of Evansville, IN was without power after winds in excess of 50 MPH raked the county. The Evansville Airport measured a wind gust to 58 MPH just before 7 P.M.
- Extensive tree and power line damage was reported in Owensboro, KY for the second time in a week.
- The most serious damage occurred east of U.S. Highway 41. This includes an area from Warrick and Pike Counties in Indiana south across Calhoun, KY into Greenville and Elkton, KY.
- A number of trees landed on vehicles and other property.

The Evansville radar image, below, was from just before 7 P.M. as the severe thunderstorm winds were passing across the Evansville area. Notice that the strongest winds spread away from the storms, up to 10 miles south and west of the actual rain-producing storms. Numerous trees were blown down in Henderson County, Kentucky, even though no rain fell there. The thin blue line extending from Fairfield, Illinois across Evansville to Rockport, IN is the location of the "gust front" or leading edge of strong winds.



Below is a preliminary listing of damage reports. More weather imagery follows this report.

Local Storm Report, Issued by NWS Paducah, KY

PRELIMINARY LOCAL STORM REPORT ... SUMMARY
NATIONAL WEATHER SERVICE PADUCAH KY
127 PM CDT WED JUL 14 2004

| ..TIME... | ...EVENT... | ...CITY LOCATION... | ...LAT.LON... |
|-----------------------|--|-----------------------------|-------------------------------------|
| ..DATE... |MAG.... | ..COUNTY LOCATION...ST.. | ...SOURCE.... |
| | ..REMARKS.. | | |
| 0632 PM 07/13/2004 | TSTM WND DMG | WINSLOW PIKE | 38.38N 87.21W IN TRAINED SPOTTER |
| | LARGE TREE LIMBS DOWN. TREE DOWN ON HOUSE AND CAR. 100 YEAR OLD TREES REPORTED DOWN IN COMMUNITY. BARN DESTROYED NEAR ARTHUR ALONG HIGHWAY 61. | | |
| 0633 PM 07/13/2004 | TSTM WND DMG | 3 S PETERSBURG PIKE | 38.45N 87.28W IN PUBLIC |
| | TREES AND POWER LINES DOWN ALONG STATE HIGHWAY 57 SOUTH OF TOWN. | | |
| 0634 PM 07/13/2004 | TSTM WND DMG | MOUNT CARMEL WABASH | 38.42N 87.77W IL EMERGENCY MNGR |
| | TREES AND LARGE TREE LIMBS DOWN. | | |
| 0635 PM 07/13/2004 | TSTM WND DMG | PRINCETON GIBSON | 38.36N 87.57W IN LAW ENFORCEMENT |
| | TREES DOWN COUNTY WIDE, ESPECIALLY IN PRINCETON AND OAKLAND CITY. FIRES DUE TO DOWNED POWER LINES. | | |
| 0640 PM 07/13/2004 | TSTM WND DMG | WINSLOW PIKE | 38.38N 87.21W IN TRAINED SPOTTER |
| | BIG TREES, LARGE LIMBS, AND POWER LINES DOWN. | | |
| 0641 PM 07/13/2004 | TSTM WND DMG | 4 S MACKEY WARRICK | 38.19N 87.39W IN TRAINED SPOTTER |
| | LARGE TREE LIMBS DOWN. | | |
| 0645 PM 07/13/2004 | TSTM WND DMG | 6 NE SANTA CLAUS SPENCER | 38.18N 86.85W IN TRAINED SPOTTER |
| | TREES DOWN DAMAGING VEHICLES IN THE COMMUNITY OF SAINT MEINRAD. | | |
| 0645 PM 07/13/2004 | TSTM WND DMG | POSEYVILLE POSEY | 38.17N 87.78W IN TRAINED SPOTTER |
| | LARGE TREE LIMBS DOWN. WIND GUST ESTIMATED 50 TO 60 MPH. | | |
| 0655 PM 07/13/2004 | TSTM WND DMG | BOONVILLE WARRICK | 38.05N 87.27W IN TRAINED SPOTTER |
| | NUMEROUS TREES DOWN ON HOMES AND VEHICLES. | | |

0655 PM TSTM WND GST EVANSVILLE 37.98N 87.54W
07/13/2004 58 MPH VANDERBURGH IN AWOS

MEASURED AT EVANSVILLE REGIONAL AIRPORT.

0700 PM TSTM WND DMG GRANDVIEW 37.94N 86.98W
07/13/2004 SPENCER IN TRAINED SPOTTER

TREES AND POWER LINES DOWN COUNTY WIDE.

0700 PM TSTM WND GST BOONVILLE 38.05N 87.27W
07/13/2004 65 MPH WARRICK IN TRAINED SPOTTER

LARGE TREES AND POWER LINES DOWN. LARGE LIMBS DOWN ALSO.
WIND GUST 65 MPH WITH 1/2 HAIL ASSOCIATED WITH STORM.
PORTION OF COMMUNITY WITHOUT POWER.

0707 PM TSTM WND DMG OWENSBORO 37.76N 87.12W
07/13/2004 DAVIESS KY TRAINED SPOTTER

LARGE TREE LIMBS DOWN WITH FLYING DEBRIS.

0708 PM TSTM WND DMG OWENSBORO 37.76N 87.12W
07/13/2004 DAVIESS KY EMERGENCY MNGR

SEVERAL REPORTS OF TREES AND POWER LINES DOWN THROUGHOUT
THE COUNTY.

0715 PM TSTM WND GST OWENSBORO 37.76N 87.12W
07/13/2004 60 MPH DAVIESS KY TRAINED SPOTTER

TREES DOWN WITH SHINGLES BLOWN OFF OF SOME HOMES.

0725 PM HAIL 2 S CHANDLER 38.01N 87.37W
07/13/2004 0.88 INCH WARRICK IN TRAINED SPOTTER

NICKLE SIZE HAIL 2 MILES SOUTH OF CHANDLER NEAR ROUTE 61.

0735 PM TSTM WND DMG LIVERMORE 37.49N 87.13W
07/13/2004 MCLEAN KY EMERGENCY MNGR

TREES DOWN IN PORTION OF COMMUNITY.

0745 PM TSTM WND DMG CALHOUN 37.54N 87.26W
07/13/2004 MCLEAN KY EMERGENCY MNGR

NUMEROUS TREES AND POWER LINES DOWN IN PORTIONS OF
COMMUNITY AND THROUGHOUT COUNTY.

0750 PM TSTM WND DMG 5 S ALBION 38.30N 88.06W
07/13/2004 EDWARDS IL LAW ENFORCEMENT

POWER LINES DOWN IN RURAL SOUTHEAST PORTION OF COUNTY.

0800 PM TSTM WND DMG MADISONVILLE 37.34N 87.51W
07/13/2004 HOPKINS KY LAW ENFORCEMENT

TREES AND POWER LINES DOWN COUNTY WIDE

0800 PM TSTM WND DMG GREENVILLE 37.21N 87.18W
07/13/2004 MUHLENBERG KY TRAINED SPOTTER

SEVERAL TREES AND TREE LIMBS DOWN.

0803 PM TSTM WND DMG MOUNT CARMEL 38.42N 87.77W
07/13/2004 WABASH IL LAW ENFORCEMENT

POWER LINES DOWN ALONG LADUE DRIVE WITH POWER OUTAGES
REPORTED. FEW REPORTS OF TREES DOWN THROUGHOUT COUNTY.

0805 PM TSTM WND DMG SLAUGHTERS 37.49N 87.50W
07/13/2004 WEBSTER KY FIRE DEPT/RESCUE

SEVERAL TREE LIMBS DOWN. NUMEROUS TREE LIMBS REPORTED
DOWN IN COMMUNITY OF SEBREE ALSO.

0810 PM TSTM WND DMG 5 NE PROVIDENCE 37.45N 87.69W
07/13/2004 WEBSTER KY EMERGENCY MNGR

POWER LINES DOWN ACROSS ROADWAY.

0810 PM TSTM WND DMG MADISONVILLE 37.34N 87.51W
07/13/2004 HOPKINS KY TRAINED SPOTTER

TREES AND POWER LINES DOWN.

0815 PM TSTM WND GST GREENVILLE 37.21N 87.18W
07/13/2004 60 MPH MUHLENBERG KY TRAINED SPOTTER

0820 PM TSTM WND DMG GREENVILLE 37.21N 87.18W
07/13/2004 MUHLENBERG KY LAW ENFORCEMENT

NUMEROUS TREES DOWN ALONG ROUTE 431.

0830 PM TSTM WND DMG HOPKINSVILLE 36.85N 87.49W
07/13/2004 CHRISTIAN KY COUNTY OFFICIAL

TREES DOWN COUNTY WIDE, FIRES DUE TO DOWNED POWER LINES

0835 PM TSTM WND DMG CLIFTY 37.00N 87.15W
07/13/2004 TODD KY EMERGENCY MNGR

TREES DOWN IN THE COMMUNITIES OF CLIFTY, CLAYMORE AND
ELLEGRE.

0852 PM TSTM WND GST ALLEGRE 36.93N 87.22W
07/13/2004 60 MPH TODD KY AMATEUR RADIO

TREES DOWN COUNTY WIDE WITH SMALL HAIL REPORTED.

0905 PM TSTM WND DMG HOPKINSVILLE 36.85N 87.49W
07/13/2004 CHRISTIAN KY UTILITY COMPANY

TREES AND POWER LINES DOWN IN PORTIONS OF COMMUNITY.

0915 PM TSTM WND DMG 8 SSE ELKTON 36.70N 87.10W
07/13/2004 TODD KY AMATEUR RADIO

TREES DOWN OVER ROADS IN ALLENSVILLE.

0917 PM HAIL PROVIDENCE 37.40N 87.75W
07/13/2004 0.88 INCH WEBSTER KY TRAINED SPOTTER

The image below is an infrared satellite image with lightning strikes overlaid (in green) and severe weather watch boxes overlaid. This was current at 6:45 P.M. CDT. The intense storms were rapidly approaching the Ohio River from the north.

