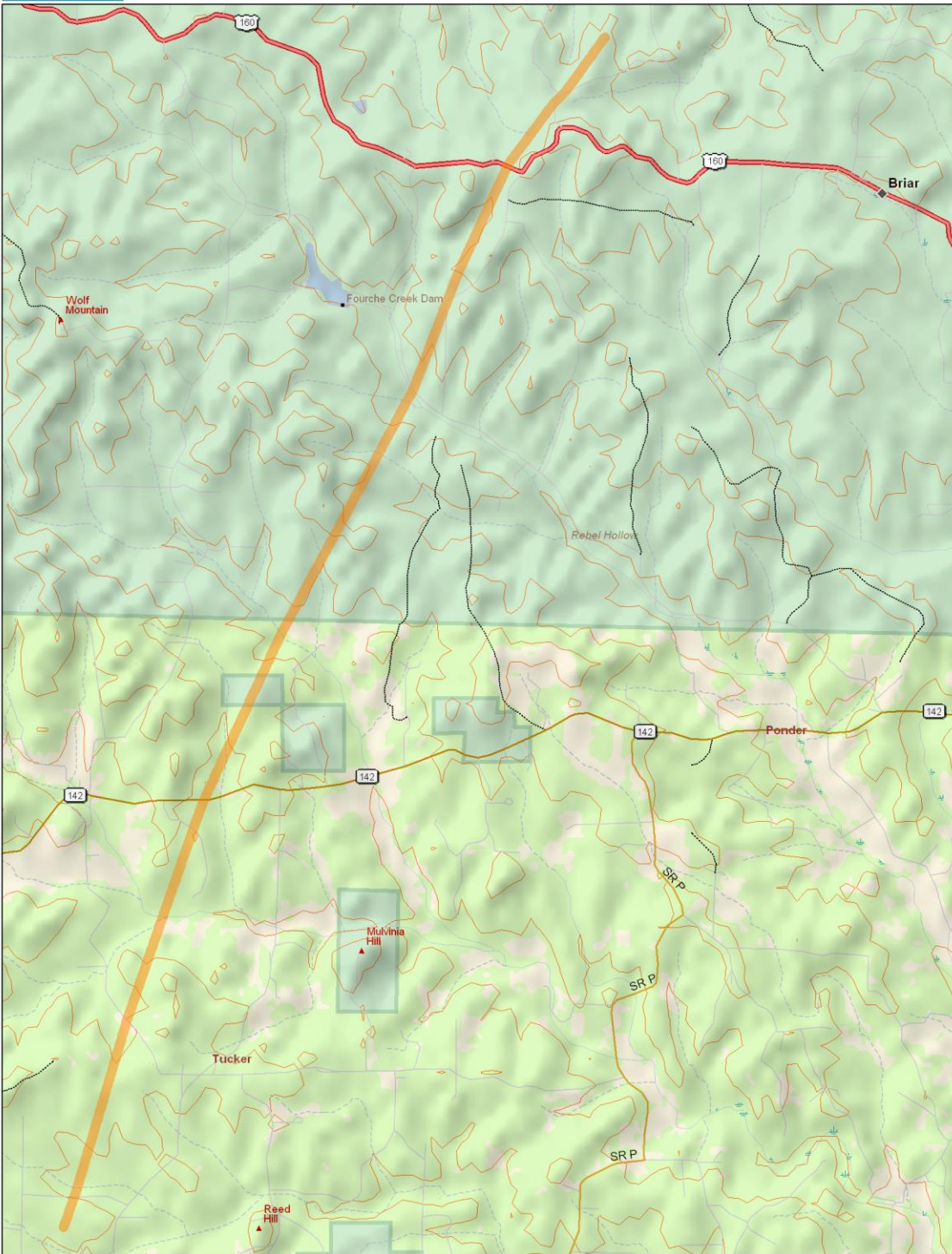


# *Ripley County, MO F-2 Tornado*

The Ripley County tornado was part of the third and final deadly tornado outbreak of November, 2005 in our region. The first was on November 6, when the Evansville area was struck by an F-3 tornado which took about two dozen lives. The second was on November 15, when the Madisonville, KY area was struck by an F-4 tornado and Marshall County, KY was struck by a deadly F-3 tornado.

THE FOLLOWING IS THE PRELIMINARY DAMAGE ASSESSMENT FOR THE DAMAGE THAT OCCURRED OVER RIPLEY COUNTY MISSOURI ON NOVEMBER 27 2005.

- \* EVENT DATE: NOVEMBER 27 2005
- \* EVENT TYPE: F2 TORNADO
- \* EVENT LOCATION: TORNADO TOUCHED DOWN 3 MILES SOUTH OF GATEWOOD AND MOVED NORTH NORTHEAST AND LIFTED 2.5 MILES NORTHWEST OF BRIAR.
- \* PEAK WIND: 140 MPH
- \* AVERAGE PATH WIDTH: 200 YARDS. (TORNADO WAS CLOSE TO 250 YARDS IN PLACES)
- \* PATH LENGTH: 12 MILES
- \* INJURIES: 0
- \* FATALITIES: 1
- \* DISCUSSION/DAMAGE: OF THE DAMAGE ASSESSED...TWO STORY HOME DESTROYED HALF WAY BETWEEN GATEWOOD AND BRIAR. TWO HOMES WITH MAJOR DAMAGE. ONE MOBILE HOME DESTROYED. NUMEROUS TREES SNAPPED OR UPROOTED.



Data use subject to license.  
© 2004 DeLorme. Topo USA® 5.0.  
www.delorme.com

★  
↑  
MN (0.5° E)

0 ½ 1 1½ 2 mi  
Data Zoom 11-5

**Path Map (Darker green background represents the Mark Twain National Forest. The primary highway on the map is U.S. Route 160.)**

**PHOTOS:**















## ALL STORM REPORTS RECEIVED

PRELIMINARY LOCAL STORM REPORT...SUMMARY

NATIONAL WEATHER SERVICE PADUCAH KY

545 AM CST MON NOV 28 2005

..TIME...	...EVENT...	...CITY LOCATION...	...LAT.LON...
..DATE...	....MAG....	..COUNTY LOCATION..ST..	...SOURCE....
..REMARKS..			
0930 PM 11/27/2005	TSTM WND DMG	1 E GATEWOOD RIPLEY	36.56N 91.06W MO LAW ENFORCEMENT
SEVERAL POWERLINES DOWN AND 1 TREE DOWN ON TRUCK			
1035 PM 11/27/2005	TSTM WND DMG	BRIAR RIPLEY	36.64N 90.96W MO LAW ENFORCEMENT
SEVERAL TREES DOWN ON HWY. 160 NEAR BRIAR.			
1035 PM 11/27/2005	TSTM WND DMG	3 W BRIAR RIPLEY	36.64N 91.02W MO LAW ENFORCEMENT
*** 1 FATAL *** 1 LARGE 2 STORY HOUSE DESTROYED. ONE 74 YEAR OLD MALE LIVING ON SECOND FLOOR DIED. TWO INDIVIDUALS LIVING ON FIRST FLOOR NOT INJURED. TWO MOBILE HOMES DAMAGED WITH ROOFS PEELED OFF. TREES DOWN THROUGHOUT SOUTHWEST PORTION OF RIPLEY COUNTY. TIME OF EVENTS ESTIMATED BETWEEN 1035 PM AND 1100 PM CST.			
0201 AM 11/28/2005	TSTM WND DMG	DEXTER STODDARD	36.79N 89.96W MO LAW ENFORCEMENT
TREES DOWN ALONG COUNTY HIGHWAY 514.			
0205 AM 11/28/2005	TSTM WND GST	MORLEY SCOTT	37.04N 89.61W MO LAW ENFORCEMENT
60.00 MPH			
0300 AM 11/28/2005	TSTM WND DMG	DE SOTO JACKSON	37.82N 89.23W IL LAW ENFORCEMENT
TREES DOWN.			
0305 AM 11/28/2005	FLASH FLOOD	GREENVILLE WAYNE	37.13N 90.45W MO LAW ENFORCEMENT
STANDING WATER REPORTED ON SEVERAL COUNTY ROADS AT MIDNIGHT...WATER HAS SINCE RECEDED.			
0400 AM 11/28/2005	FLOOD	3 W MILLERSVILLE CAPE GIRARDEAU	37.42N 89.85W MO LAW ENFORCEMENT
FLOODING REPORTED AT INTERSECTION OF HIGHWAYS 72 AND 350 WEST OF COMMUNITY.			