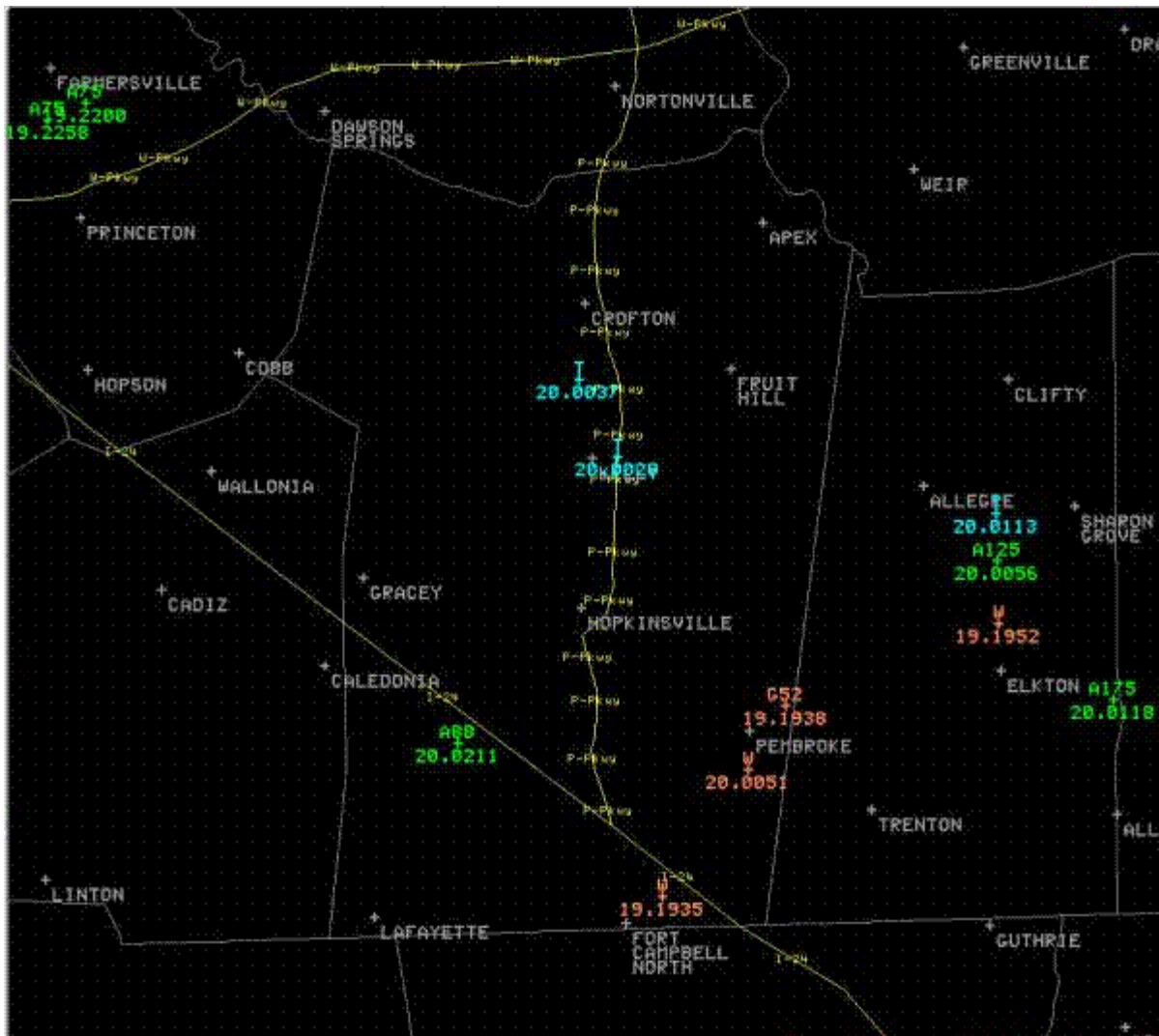


Severe Weather Outbreak on May 19, 2005

- A prolonged period of severe weather affected our region on Thursday, May 19. The initial Severe Thunderstorm Watch was issued at 11:15 A.M. All or part of the Paducah National Weather Service forecast area was under a Severe Thunderstorm Watch until about 5:00 A.M. the following morning, May 20. A total of 52 Severe Thunderstorm Warnings and 3 Tornado Warnings were issued.
- A tornado touched down in northern Christian County, near the community of Kelly, which is north of Hopkinsville. A couple of brief tornado touchdowns were also reported near the Todd-Christian County line along U.S. Highway 68 / Kentucky Highway 80. See the storm damage surveys below.
- Baseball size hail was reported near Dawson Springs, KY, along the Hopkins/Caldwell County border at 5:11 P.M. Windows were broken out of a house and vehicle.
- Below is a graphic plot of preliminary severe storm reports from the Pennyryle region of western Kentucky. Tornado reports are in blue, with hail reports in green and wind reports in an off-shade of red. For a wider scale view of severe storm reports, see below. A complete text listing of preliminary severe storm reports is at the bottom of this page.



STORM DAMAGE SURVEYS

Christian County

Kelly

19 1828CST 0.2 50 0 0 15K Tornado (F1)

An unoccupied mobile home was damaged. The mobile home was unroofed and pushed off its foundation. The tin roof on a garage was partially blown off. A garage door was pushed in, and another large garage door was blown out. Tin and other lightweight materials were blown several hundred feet. Peak winds in this very short track tornado were estimated near 80 MPH. Several witnesses reported their observations to local law enforcement official.

Christian County

5.5 NE Pembroke to
5.6 NE Pembroke

19 1838CST 0.1 100 0 0 100K Tornado (F1)

1839CST

A funnel cloud skipped along the ground near the Christian/Todd County line. This was the first of two touchdowns of the same tornado. Along U.S. Highway 68 just inside Christian County, near the Jefferson Davis Monument State Historic Site, a few sheds and small buildings were unroofed. Numerous trees were blown down. This first touchdown in Christian County was about 1/8 mile long and 100 yards wide. Peak winds were estimated near 80 MPH. About a mile to the east in Todd County, there was a second brief touchdown of this tornado.

Todd County

8 WNW Elkton to
7.9 WNW Elkton

19 1839CST 0.1 100 0 0 150K Tornado (F1)

1840CST

The tornado skipped along the ground from Christian County into Todd County. This second touchdown occurred about a mile east of the Christian County touchdown. Along U.S. Highway 68 just inside Todd County, a garage and a small building were unroofed. Building debris was blown through a truck window. A piece of wood was impaled into a portable plastic tank. Numerous trees were blown down. This touchdown was about 1/8 mile long and 100 yards wide. Peak winds were estimated near 80 MPH.

TORNADO DAMAGE PHOTOS FROM THE KELLY KY AREA (SURVEYED BY RON FIELDS)



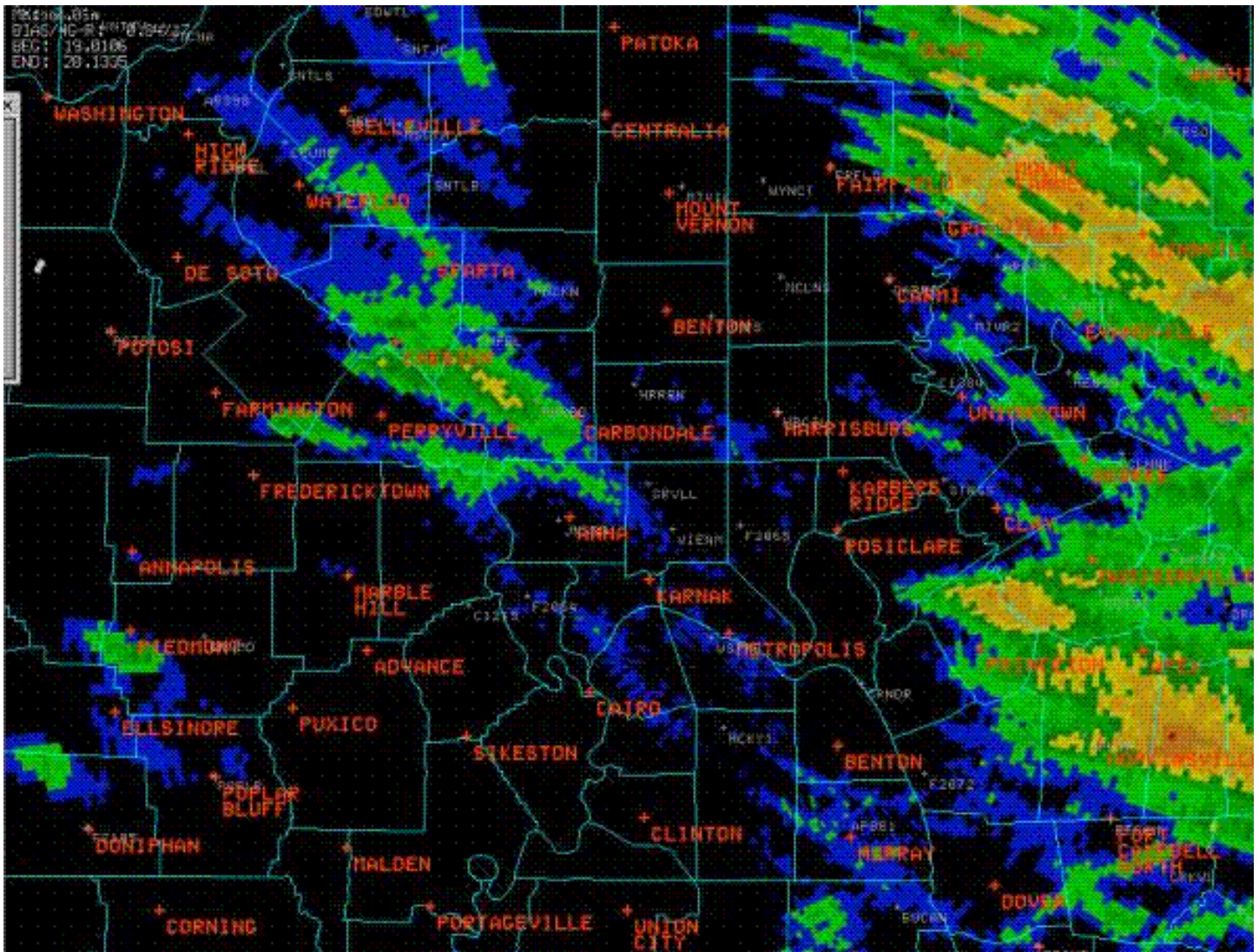
TORNADO DAMAGE PHOTOS TAKEN NOT TOO FAR FROM THE JEFFERSON DAVIS MONUMENT STATE HISTORIC SITE (NEAR THE TODD-CHRISTIAN COUNTY LINE ALONG U.S. HIGHWAY 68/KENTUCKY HIGHWAY 80)







Storms repeatedly moved over some of the same areas of western Kentucky, southwest Indiana, and southeast Illinois. Very heavy rainfall from 2 to around 3 inches occurred. Isolated flash flooding was reported. A radar-estimated rainfall map is shown below. Amounts were overestimated in some areas by around 25 percent due to hail contamination. Amounts below 0.30 inch have been filtered out. Green shades represent 1 to 2.5 inches. Yellow and gold shades represent 2.5 to 4 inches.



PRELIMINARY LOCAL STORM REPORT...SUMMARY
 NATIONAL WEATHER SERVICE PADUCAH KY
 125 PM CDT FRI MAY 20 2005

..TIME...	...EVENT...	...CITY LOCATION...	...LAT.LON...
..DATE...MAG....	..COUNTY LOCATION..ST..	...SOURCE....
	..REMARKS..		
0210 PM 05/19/2005	TSTM WND DMG	PIEDMONT WAYNE	37.15N 90.70W MO POST OFFICE
	TREES AND POWER LINES DOWN.		
0235 PM 05/19/2005	TSTM WND DMG	OAK GROVE CHRISTIAN	36.67N 87.43W KY EMERGENCY MNGR
	BIG SIGN BLOWN DOWN ACROSS 41A NEAR OAK GROVE. SIGNS DOWN ALONG I-24 BETWEEN MILE MARKERS 86 AND 89.		
0238 PM 05/19/2005	TSTM WND GST 60 MPH	2 NE PEMBROKE CHRISTIAN	36.79N 87.33W KY TRAINED SPOTTER
	LARGE TREE DOWN		
0238 PM 05/19/2005	TSTM WND DMG	EVANSVILLE VANDERBURGH	37.98N 87.54W IN EMERGENCY MNGR
	TRAFFIC WIRES DOWN...TAKING DOWN TRAFFIC SIGNALS		
0252 PM 05/19/2005	TSTM WND DMG	2 N ELKTON TODD	36.84N 87.16W KY LAW ENFORCEMENT
	ABOUT 6 TREES BLOCKING ROADS ACROSS THE NORTHERN PART OF THE COUNTY...MAINLY FROM ELKTON NORTH		
0300 PM 05/19/2005	TSTM WND DMG	MORGANFIELD UNION	37.68N 87.91W KY UTILITY COMPANY
	SMALL TREES DOWN ALONG US 60 IN UNION CUUNTY		
0345 PM 05/19/2005	HAIL 1.00 INCH	10 NNW POPLAR BLUFF BUTLER	36.90N 90.48W MO EMERGENCY MNGR
	QUARTER SIZED HAIL ALONG US HWY 60 AT CARTER/BUTLER CNTY LINE.		
0400 PM 05/19/2005	HAIL 1.00 INCH	1 NW HENDRICKSON BUTLER	36.91N 90.48W MO LAW ENFORCEMENT
	REPORTED ALONG HIGHWAY 67. HAIL DAMAGED LAW ENFORCEMENT VECHILE.		
0405 PM 05/19/2005	TSTM WND DMG	GRANDIN CARTER	36.83N 90.82W MO LAW ENFORCEMENT
	TREES DOWN IN GRANDIN		
0430 PM 05/19/2005	HAIL 0.88 INCH	PRINCETON GIBSON	38.36N 87.57W IN LAW ENFORCEMENT
	REPORTED ON WEST SIDE OF TOWN.		
0435 PM	TSTM WND DMG	OAKLAND CITY	38.34N 87.35W

05/19/2005 GIBSON IN LAW ENFORCEMENT
POWER LINES DOWN.

0443 PM HAIL DUDLEY 36.79N 90.09W
05/19/2005 0.75 INCH STODDARD MO TRAINED SPOTTER
DIME SIZED HAIL AND 28 MPH WINDS IN DUDLEY

0450 PM FUNNEL CLOUD FRIENDSVILLE 38.50N 87.82W
05/19/2005 WABASH IL LAW ENFORCEMENT
REPORTED OVER COMMUNITY.

0500 PM HAIL 5 N PRINCETON 37.18N 87.88W
05/19/2005 0.75 INCH CALDWELL KY LAW ENFORCEMENT
DIME SIZE HAIL ON HWY 293N IN CALDWELL COUNTY

0500 PM HAIL 5 WNW PRINCETON 37.13N 87.97W
05/19/2005 0.75 INCH CALDWELL KY LAW ENFORCEMENT
DIME SIZE HAIL ALONG HWY 293 N IN CALDWELL CNTY

0548 PM HAIL LIVERMORE 37.49N 87.13W
05/19/2005 1.75 INCH MCLEAN KY TRAINED SPOTTER
GOLF BALL SIZE HAIL IN LIVERMORE. SMALLER SIZES OBSERVED EARLIER.

0558 PM HAIL 2 S FARMERSVILLE 37.17N 87.91W
05/19/2005 0.75 INCH CALDWELL KY TRAINED SPOTTER
DIME SIZE HAIL S OF FARMERSVILLE

0611 PM HAIL S MADISONVILLE 37.34N 87.51W
05/19/2005 1.00 INCH HOPKINS KY AMATEUR RADIO
QUARTER SIZE HAIL S OF MADISONVILLE

0636 PM HAIL BELLMONT 38.38N 87.91W
05/19/2005 1.00 INCH WABASH IL EMERGENCY MNGR
QUARTER SIZED HAIL IN BELLMONT

0643 PM HAIL BELLMONT 38.38N 87.91W
05/19/2005 1.75 INCH WABASH IL EMERGENCY MNGR
GOLF BALL SIZE HAIL IN BELLMONT

0722 PM FLASH FLOOD 4 S MADISONVILLE 37.28N 87.51W
05/19/2005 HOPKINS KY TRAINED SPOTTER
US 41 STARTING TO FLOOD. PART OF ONE LANE COVERED ABOUT 4 MI S OF MADISONVILLE.

0728 PM TORNADO 1 E KELLY 36.95N 87.46W
05/19/2005 CHRISTIAN KY LAW ENFORCEMENT
POSSIBLE TORNADO SPOTTED E OF KELLY MOVING E

0737 PM TORNADO 10 N HOPKINSVILLE 37.00N 87.49W
05/19/2005 CHRISTIAN KY TRAINED SPOTTER

TORNADO SPOTTED E OF A LINE BETWEEN HOPKINSVILLE AND CROFTON. REPORTED TO BE ON THE GROUND AT TIMES BUT MOVING UP AND DOWN. MOVING ENE. SLIGHTLY LATER REPORT OF MINOR DAMAGE TO ROOFS AND HOUSES IN THE KELLY AREA, AND SOME TREES DOWN.

0740 PM HAIL PRINCETON 38.36N 87.57W
05/19/2005 0.75 INCH GIBSON IN TRAINED SPOTTER

DIME SIZE HAIL REPORTED IN PRINCETON IN

0751 PM TSTM WND DMG 10 SE HOPKINSVILLE 36.75N 87.36W
05/19/2005 CHRISTIAN KY TRAINED SPOTTER

60 MPH WINDS REPORTED ON US 68 NR TODD/CHRISTIAN CNTY LINE.

0756 PM HAIL 5 N ELKTON 36.88N 87.16W
05/19/2005 1.25 INCH TODD KY TRAINED SPOTTER

HALF DOLLAR SIZE HAIL 5 MI N OF ELKTON

0813 PM TORNADO 7 N ELKTON 36.91N 87.16W
05/19/2005 TODD KY TRAINED SPOTTER

TORNADO REPORTED ON THE GROUND AT TIMES AND BOUNCING UP AND DOWN

0911 PM HAIL 8 SW HOPKINSVILLE 36.77N 87.59W
05/19/2005 0.88 INCH CHRISTIAN KY TRAINED SPOTTER

NICKEL SIZE HAIL REPORTED ON HWY 68 IN CHRISTIAN CNTY AT THE TODD/CHRISTIAN CNTY LINE.

0931 PM HAIL 3 E BOONVILLE 38.05N 87.22W
05/19/2005 0.50 INCH WARRICK IN TRAINED SPOTTER

HALF INCH HAIL 3-4 MI E OF BOONVILLE IN WARRICK CNTY

1017 PM HAIL 2 NW CHANDLER 38.06N 87.39W
05/19/2005 0.50 INCH WARRICK IN TRAINED SPOTTER

UP TO HALF INCH HAIL AND 40-45 MPH WINDS

1017 PM HAIL PRINCETON 38.36N 87.57W
05/19/2005 1.00 INCH GIBSON IN MESONET

QUARTER SIZE HAIL JOHNSON AND GIBSON CNTY

1017 PM HAIL OWENSVILLE 38.27N 87.69W
05/19/2005 0.75 INCH GIBSON IN TRAINED SPOTTER

DIME SIZE HAIL IN GIBSON CNTY NEAR OWENSVILLE.

1111 PM HAIL 2 W BOONVILLE 38.05N 87.31W
05/19/2005 0.50 INCH WARRICK IN TRAINED SPOTTER

HALF INCH HAIL AND 40 MPH WINDS 2 MI W OF BOONVILLE

1118 PM HAIL 2 W BOONVILLE 38.05N 87.31W
05/19/2005 0.75 INCH WARRICK IN TRAINED SPOTTER

3/4 INCH HAIL 2 MI W OF BOONVILLE

1225 AM TSTM WND DMG JOCKEY 38.18N 87.16W
05/20/2005 WARRICK IN TRAINED SPOTTER

NUMEROUS TREES DOWN ALONG 3 MILE STRETCH OF FOLSOMVILLE ROAD.

1230 AM TSTM WND DMG 3 W PETERSBURG 38.49N 87.34W
05/20/2005 PIKE IN COUNTY OFFICIAL

TREES DOWN BLOCKING ROUTE 56 WEST OF PETERSBURG. TREES DOWN REPORTED COUNTYWIDE.

0101 AM TSTM WND DMG HEILMAN 38.16N 87.09W
05/20/2005 WARRICK IN TRAINED SPOTTER

TREE DOWN BLOCKING ROAD ON HWY 161 NEAR HEILMAN ABOUT 1 MI S OF I64

0112 AM HAIL MURPHYSBORO 37.77N 89.34W
05/20/2005 0.75 INCH JACKSON IL EMERGENCY MNGR

ALSO, 50 MPH ESTIMATED WIND REPORTED

0124 AM FLASH FLOOD 7 E BOONVILLE 38.04N 87.15W
05/20/2005 SPENCER IN TRAINED SPOTTER

3 TO 4 INCHES OF WATER OVER ROAD IN A FEW PLACES ON HIGHWAY 62.

0124 AM FLASH FLOOD BOONVILLE 38.05N 87.27W
05/20/2005 WARRICK IN TRAINED SPOTTER

2 INCHES OF WATER OVER ROADS IN A FEW PLACES BETWEEN CHANDLER AND BOONVILLE ALONG HIGHWAY 62. ALSO, SOME MINOR URBAN FLOODING IN BOONVILLE.