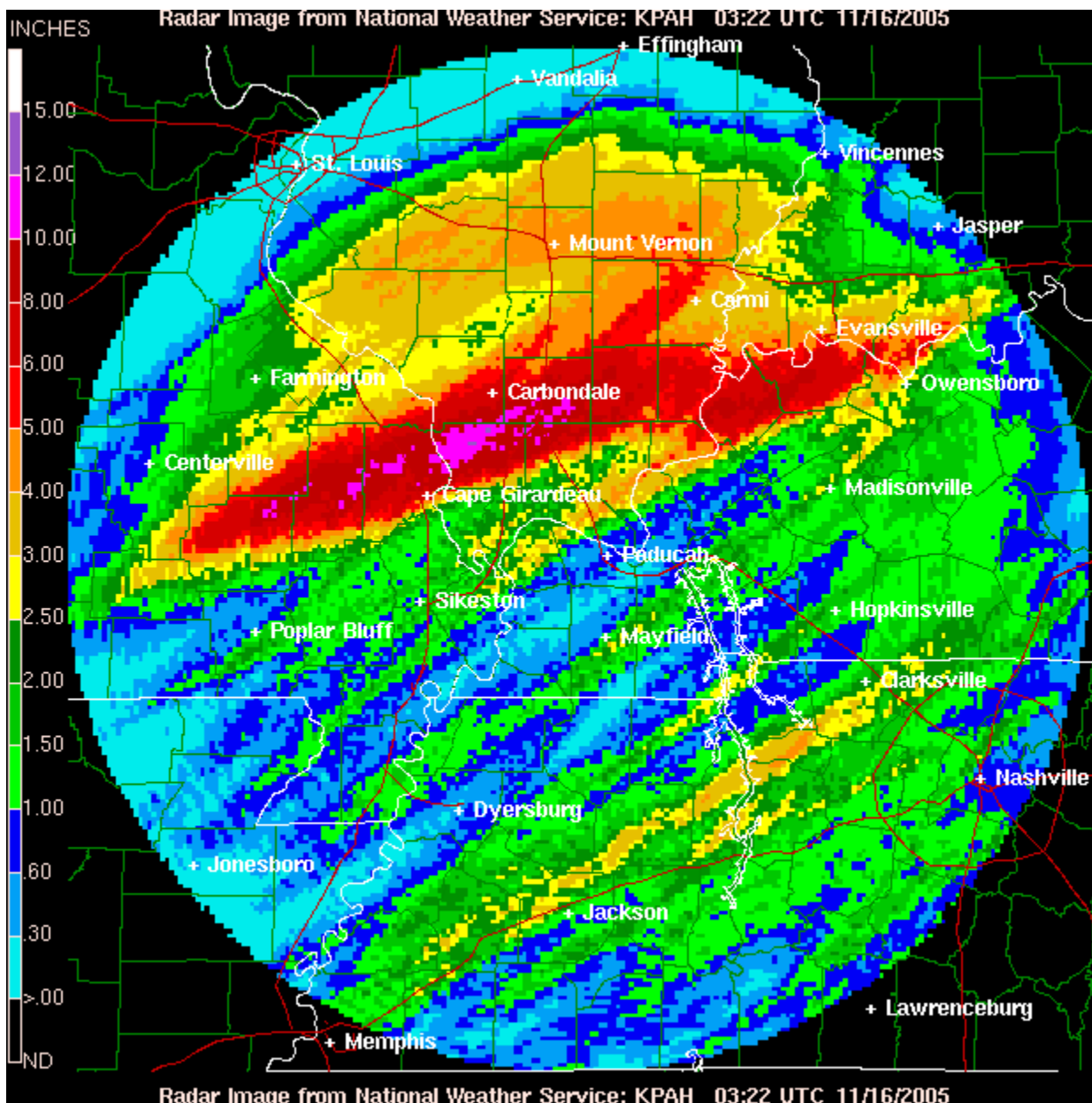


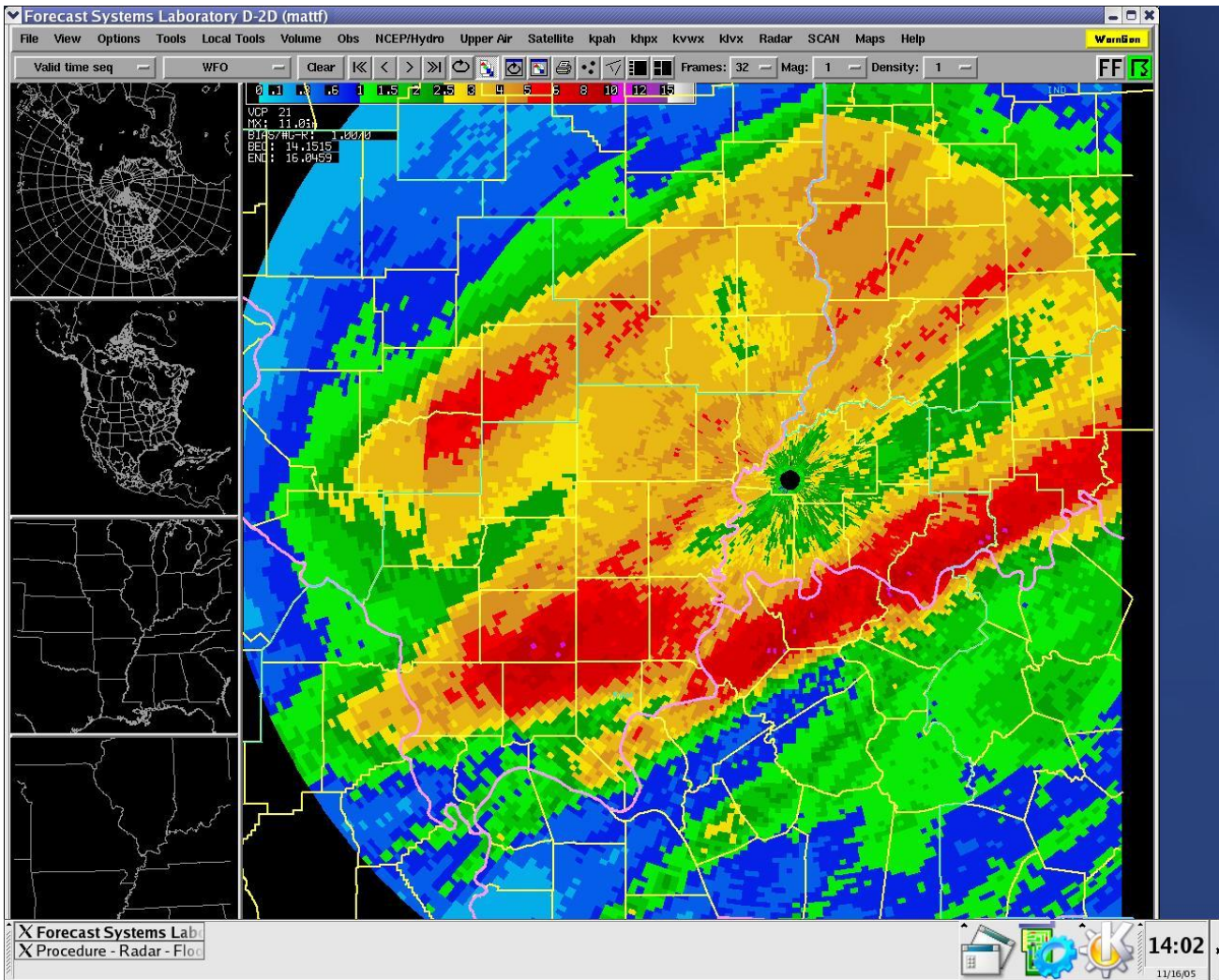
Significant flooding was reported late on the night of Nov. 14 in a narrow band from around Henderson, Kentucky southwest across Marion, IL to Cape Girardeau, Bollinger, and Wayne Counties in Missouri.

Evacuations and widespread street closures were reported in Henderson, KY. Damage to homes and businesses was estimated to be around 17.5 million dollars in Henderson County alone. Near Marion, Illinois, a school bus was stranded in deep floodwaters. There were no injuries or fatalities.

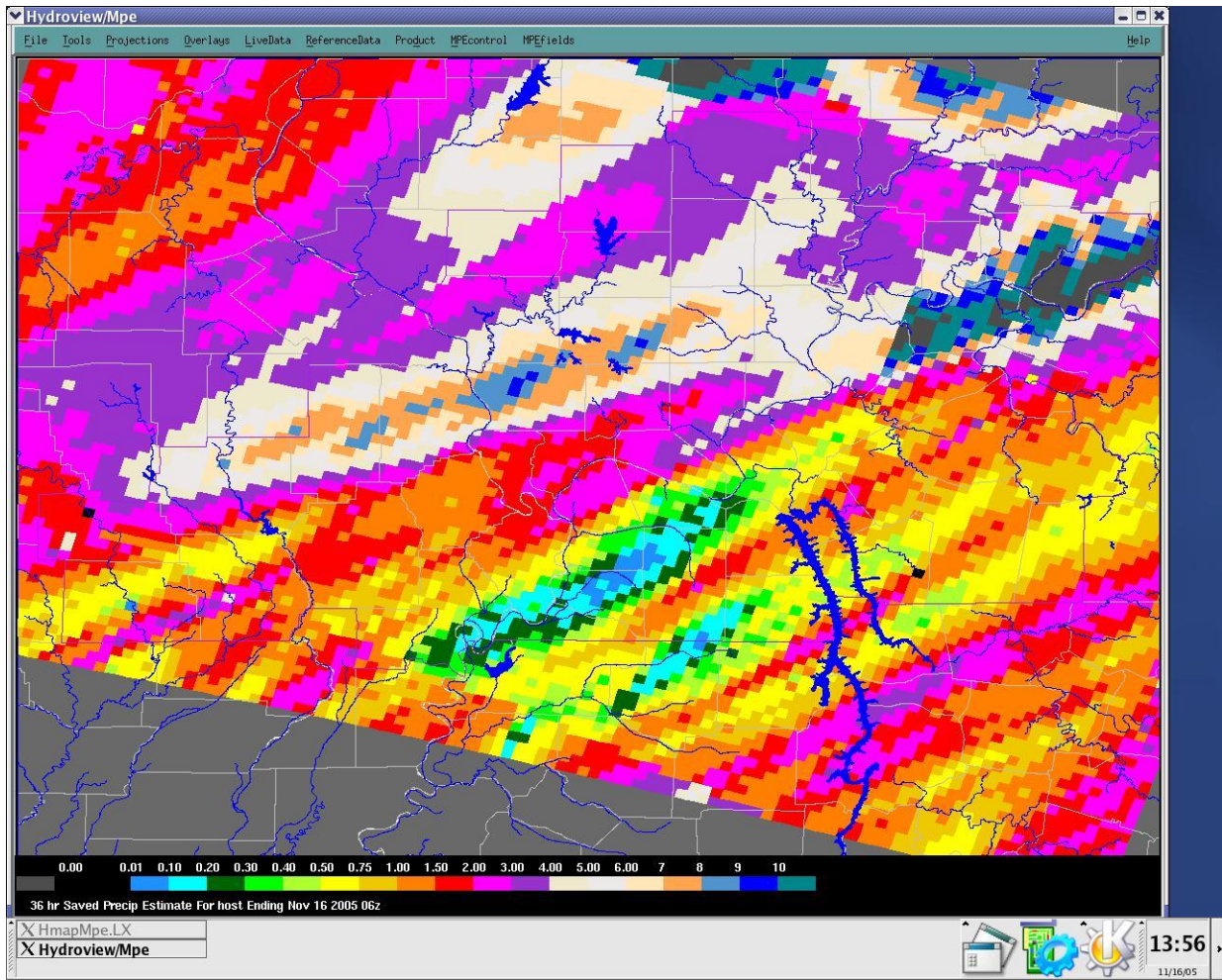
Co-operative observers reported 7.06 inches in Grandview, IN and 8.10 inches at Clearwater Dam in Wayne County, MO. Over 6 inches of rain was measured in Union County, KY. Below is a radar-estimated rainfall map from the Paducah radar, valid through the entire rainfall event November 14-15. The amounts are overestimated slightly, but they accurately indicate the location of the heaviest rain band. The east-west orientation of the band marks where storms remained nearly stationary along a warm front for much of the night of the 14th.



Below is an image of the storm total precipitation from the Evansville radar.



Rainfall from several lines of severe thunderstorms during the day on the 15th produced additional flooding across much of the area. Below are gage adjusted radar rainfall estimates for both Monday Night and Tuesday.



In the image above, white indicates 4 to 6 inches of rainfall.