

# April 30, 2006 Severe Weather Outbreak

Picture of a possible funnel cloud or tornado on the west city limits of Lilbourn, MO on State Route D taken by Russell Riggs and sent via KFVS12:



Photo of large hail in Jackson, MO by Sean Magee sent via KFVS12



PRELIMINARY LOCAL STORM REPORT...SUMMARY  
 NATIONAL WEATHER SERVICE PADUCAH KY  
 840 PM CDT SUN APR 30 2006

..TIME...	...EVENT...	...CITY LOCATION...	...LAT.LON...
..DATE...	...MAG....	..COUNTY LOCATION..ST..	...SOURCE....
	..REMARKS..		
0255 PM 04/30/2006	HAIL MO.88 INCH	SEDGEWICKVILLE BOLLINGER MO	37.52N 89.91W TRAINED SPOTTER
0255 PM 04/30/2006	HAIL MO.75 INCH	PIEDMONT WAYNE MO	37.15N 90.70W TRAINED SPOTTER
0344 PM 04/30/2006	HAIL M1.00 INCH	PINCKNEYVILLE PERRY IL	38.08N 89.38W TRAINED SPOTTER
0350 PM 04/30/2006	HAIL E1.50 INCH	PINCKNEYVILLE PERRY IL	38.08N 89.38W BROADCAST MEDIA
0400 PM 04/30/2006	HAIL E0.75 INCH	10 W HENDRICKSON BUTLER MO	36.90N 90.65W EMERGENCY MNGR
	DIME SIZED HAIL IN NW BUTLER CNTY NEAR ELSINORE		
0400 PM 04/30/2006	HAIL E0.75 INCH	15 W HENDRICKSON CARTER MO	36.90N 90.74W AIRPLANE PILOT
	DIME SIZED HAIL IN NW BUTLER NEAR ELSINORE		
0400 PM 04/30/2006	HAIL E0.25 INCH	2 N PINCKNEYVILLE PERRY IL	38.11N 89.38W TRAINED SPOTTER
	QUARTER SIZED HAIL.		
0400 PM 04/30/2006	HAIL E0.75 INCH	WAPPAPELLO WAYNE MO	36.94N 90.27W EMERGENCY MNGR
	DIME SIZED HAIL NEAR WAPPAPELLO AND SULFUR - REPORTED BY BUTLER CNTY EM		
0404 PM 04/30/2006	HAIL E1.75 INCH	ZALMA BOLLINGER MO	37.14N 90.08W EMERGENCY MNGR
	GOLF BALL SIZED HAIL.		
0404 PM 04/30/2006	HAIL E0.75 INCH	JACKSON CAPE GIRARDEAU MO	37.38N 89.65W TRAINED SPOTTER
	PEA TO DIME SIZED HAIL.		
0409 PM 04/30/2006	HAIL E0.75 INCH	9 N DONIPHAN RIPLEY MO	36.75N 90.82W TRAINED SPOTTER
	PEA TO DIME SIZED HAIL.		
0415 PM 04/30/2006	HAIL E2.75 INCH	ZALMA BOLLINGER MO	37.14N 90.08W BROADCAST MEDIA
	BASEBALL SIZED HAIL.		
0415 PM 04/30/2006	HAIL E1.75 INCH	10 W ADVANCE BOLLINGER MO	37.10N 90.10W EMERGENCY MNGR
	GOLF BALL SIZED HAIL.		
0417 PM 04/30/2006	HAIL E1.00 INCH	ZALMA BOLLINGER MO	37.14N 90.08W TRAINED SPOTTER
	NICKEL TO QUARTER SIZED HAIL - BOLLINGER CNTY		
0425 PM 04/30/2006	HAIL E0.75 INCH	1 N POPLAR BLUFF BUTLER MO	36.78N 90.41W EMERGENCY MNGR
	DIME SIZED HAIL JUST N OF POPLAR BLUFF NEAR HWY 67 AND 60W.		
0427 PM 04/30/2006	HAIL E0.75 INCH	4 N DONIPHAN RIPLEY MO	36.68N 90.82W EMERGENCY MNGR
	DIME SIZED HAIL.		
0430 PM 04/30/2006	HAIL MO.88 INCH	WHITEWATER CAPE GIRARDEAU MO	37.24N 89.80W EMERGENCY MNGR

0442 PM	HAIL	GRAND TOWER	37.64N 89.50W
04/30/2006	MO.75 INCH	JACKSON	IL LAW ENFORCEMENT
0447 PM	HAIL	8 W POPLAR BLUFF	36.76N 90.55W
04/30/2006	MO.00 INCH	BUTLER	MO LAW ENFORCEMENT
EVENT OCCURRED IN THE COMMUNITY OF STRINGTOWN.			
0457 PM	HAIL	ADVANCE	37.10N 89.91W
04/30/2006	MO.88 INCH	STODDARD	MO TRAINED SPOTTER
0458 PM	HAIL	POPLAR BLUFF	36.76N 90.41W
04/30/2006	MO.00 INCH	BUTLER	MO EMERGENCY MNGR
HIGHWAY 67 AND OAK GROVE.			
0458 PM	HAIL	1 S WAPPAPELLO	36.92N 90.27W
04/30/2006	MO.88 INCH	BUTLER	MO EMERGENCY MNGR
EVENT OCCURRED JUST SOUTH OF THE DAM.			
0504 PM	HAIL	3 W ADVANCE	37.10N 89.97W
04/30/2006	MO.75 INCH	BOLLINGER	MO LAW ENFORCEMENT
EVENT OCCURRED ON HIGHWAY BB. ALSO OCCURRED 4 SOUTH OF ADVANCE. BROKE THROUGH WINDSHILD OF AMBULANCE.			
0505 PM	HAIL	CHAFFEE	37.18N 89.66W
04/30/2006	MO.75 INCH	SCOTT	MO BROADCAST MEDIA
0519 PM	HAIL	VASTUS	36.55N 90.41W
04/30/2006	MO.00 INCH	BUTLER	MO EMERGENCY MNGR
EVENT OCCURRED NEAR INTERSECTION OF HIGHWAYS 160 AND 67. DIME SIZE HAIL REPORTED IN SEVERAL SECTIONS OF SOUTHERN BUTLER COUNTY.			
0519 PM	HAIL	WOODLAWN	38.33N 89.04W
04/30/2006	EO.75 INCH	JEFFERSON	IL TRAINED SPOTTER
0523 PM	HAIL	NAYLOR	36.57N 90.61W
04/30/2006	MO.75 INCH	RIPLEY	MO EMERGENCY MNGR
HAIL COVERING GROUND.			
0527 PM	HAIL	5 S POPLAR BLUFF	36.69N 90.41W
04/30/2006	MO.75 INCH	BUTLER	MO EMERGENCY MNGR
EVENT REPORTED AT INTERSECTION OF HIGHWAYS MM AND 35.			
0528 PM	HAIL	MURPHYSBORO	37.77N 89.34W
04/30/2006	MO.00 INCH	JACKSON	IL LAW ENFORCEMENT
0540 PM	FUNNEL CLOUD	BELL CITY	37.02N 89.82W
04/30/2006		STODDARD	MO PUBLIC
REPORTED JUST SOUTH AND WEST OF BELL CITY. FUNNEL CLOUD NEARING GROUND. TWO PUBLIC REPORTS RELAYED TO LAW ENFORCEMENT.			
0547 PM	FUNNEL CLOUD	2 W DEXTER	36.79N 90.00W
04/30/2006		STODDARD	MO PUBLIC
REPORTS RELAYED TO LAW ENFORCEMENT. OTHER REPORTS OF FUNNEL CLOUD BETWEEN DEXTER AND SIKESTON AT INTERSECTION OF HIGHWAYS 60 AND N.			
0550 PM	FUNNEL CLOUD	GRAYRIDGE	36.82N 89.78W
04/30/2006		STODDARD	MO TRAINED SPOTTER
EVENT OCCURRED ALONG HIGHWAY 60. VERY BRIEF TOUCHDOWN. FUNNEL CLOUD MOVING EAST NORTHEAST TOWARD SCOTT COUNTY. GOLFBALL HAIL REPORTED WITH STORM ALSO. EVENT RELAYED TO EMERGENCY MANAGER.			
0605 PM	TSTM WND DMG	4 N COBDEN	37.59N 89.25W
04/30/2006		UNION	IL BROADCAST MEDIA
TREES DOWN AND ONE HOME DAMAGED. UNCONFIRMED REPORT OF FUNNEL CLOUD NEAR THE SAME AREA.			
0610 PM	TSTM WND DMG	COBDEN	37.53N 89.25W
04/30/2006		UNION	IL BROADCAST MEDIA

DOWNED TREES AND POWER LINES.

0630 PM HAIL 1 E SIKESTON 36.88N 89.56W  
04/30/2006 MO.75 INCH SCOTT MO TRAINED SPOTTER

EVENT OCCURRED ON THE SCOTT/NEW MADRID COUNTY LINE NEAR INTERSECTION OF INTERSTATE HIGHWAYS 57 AND 55.

0653 PM HAIL CANALOU 36.75N 89.69W  
04/30/2006 MO.75 INCH NEW MADRID MO TRAINED SPOTTER

0705 PM FUNNEL CLOUD 2 W TALLAPOOSA 36.51N 89.85W  
04/30/2006 NEW MADRID MO LAW ENFORCEMENT

OBSERVED BY STATE POLICE. FUNNEL CLOUD WAS MOVING EAST TOWARD THE COMMUNITY.

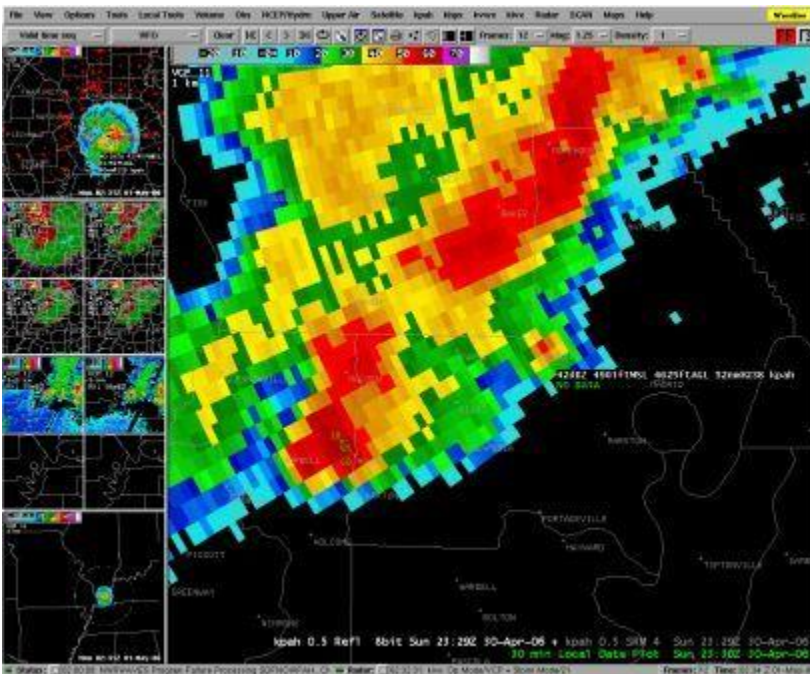
0718 PM TORNADO 4 SW PARMA 36.57N 89.87W  
04/30/2006 NEW MADRID MO TRAINED SPOTTER

REPORTED TO STATE POLICE. TORNADO LIFTED AT 724 PM AND STORM IS TRACKING TOWARD THE COMMUNITY OF RISCO.

0741 PM FUNNEL CLOUD MARSTON 36.52N 89.61W  
04/30/2006 NEW MADRID MO LAW ENFORCEMENT

NUMEROUS REPORTS TO SHERIFF OFFICE ON FUNNEL CLOUDS NEAR THE COMMUNITY OF MARSTON AND BETWEEN MARSTON AND PARMA. SOME PUBLIC REPORTS OF BRIEF TOUCHDOWNS. LAW ENFORCEMENT IS RESPONDING.

**Below is a radar image** of the tornadic storm as it entered western New Madrid Co., MO at 5:30 P.M. CDT. The cell with rotation is at the southern end of the line of storms.



Below is a graphic depiction of the severe weather watch boxes that were in effect at 5 P.M. The southeast portion of the larger Severe Thunderstorm Watch box was upgraded to a Tornado Watch. Cloud-to-ground lightning strikes in the one-hour period ending at 5 P.M. CDT are depicted in green. There are 2,721 strikes shown on the map.

