

## ...PRELIMINARY DAMAGE SURVEY RESULTS FOR JEFFERSON COUNTY ILLINOIS...

THE FOLLOWING IS A PRELIMINARY DAMAGE ASSESSMENT FOR THE DAMAGE THAT OCCURRED OVER JEFFERSON COUNTY ILLINOIS ON JULY 21 2006.

\* EVENT DATE: FRIDAY JULY 21

\* EVENT TIME: APPROXIMATELY 1230 PM - 100 PM.

\* EVENT TYPE: STRAIGHT LINE WIND DAMAGE - DOWNBURST

\* EVENT LOCATION: WIDESPREAD DAMAGE THROUGHOUT COUNTY

\* PEAK WIND: 80 TO 100 MPH

\* INJURIES: NONE

\* FATALITIES: NONE

\* DISCUSSION/DAMAGE: SEVERAL HUNDRED HOMES WITH CONSIDERABLE ROOF DAMAGE DUE TO WIND DAMAGE AND FALLEN TREES. MANY LARGE LIMBS AND SOME TREES FALLEN ON HOUSES. SEVERAL THOUSAND TREES DOWN THROUGHOUT THE COUNTY. CONSIDERABLE CROP DAMAGE...ESPECIALLY NEAR MOUNT VERNON. TRACTOR TRAILERS OVERTURNED ON THE INTERSTATE.



Above: Photo of damaged grade school in Woodlawn, which is several miles west of Mount Vernon near I-64



Above: Tree damage was extensive in Mount Vernon



Above: Damage in southeast Mount Vernon

**HISTORY:** The origins of this widespread, extremely damaging wind event were in the St. Louis area, which suffered its second round of punishing storms in less than three days. These storms were responsible for the largest power outage in the history of St. Louis.

The complex of severe thunderstorms formed in a very moist and unstable air mass over the mid-Mississippi Valley. These storms moved east-southeast and expanded in size across southern Illinois, western Kentucky, and southwest Indiana during the afternoon. The storms also affected a small part of southeast Missouri, mainly from Cape Girardeau north and northwest. View archived surface and upper air maps, satellite and radar imagery, and watch boxes from the Storm Prediction Center here: <http://ow.ly/Nvc4F>

**EFFECTS:** Jefferson County, Illinois suffered extreme wind damage. Dozens of homes were severely damaged, mostly by falling trees. Three homes were destroyed. Widespread power outages affected the county for several days. Mobile homes from a sales company were blown onto nearby Interstate 57. Semis were overturned. Several people were directly injured by the storms, mostly due to falling trees. Damage will be in the millions of dollars. The damage was surveyed and photographed by NWS personnel the following morning.

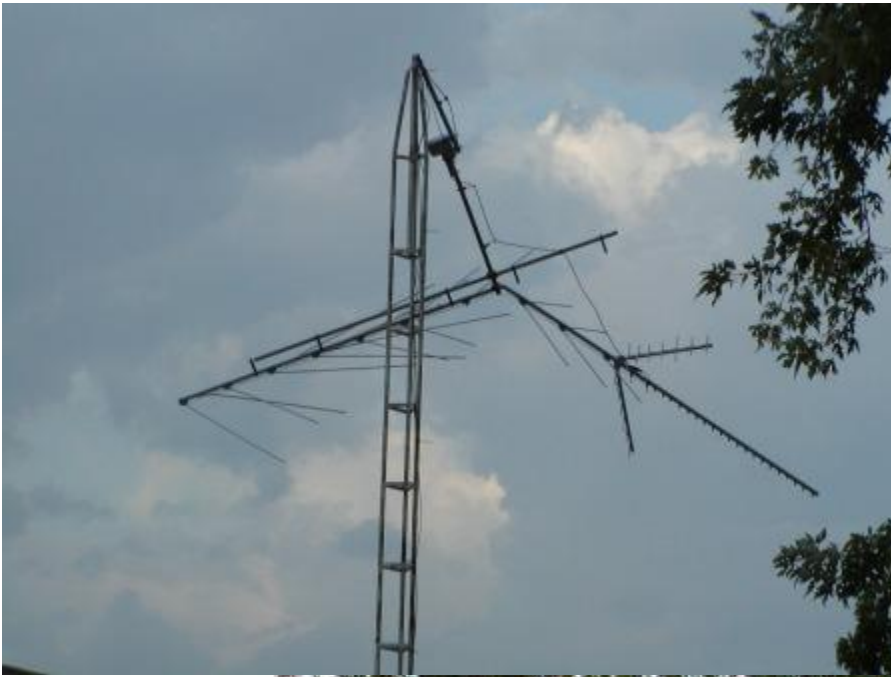
Other significant wind damage reports during this round of storms were from Hamilton County, IL east-southeast across Gallatin County, IL, Posey County, IN, and Henderson, KY to Owensboro. Numerous trees and power lines were blown down in these areas. Widespread power outages were reported in Gallatin County. Winds estimated near 70 MPH in the Henderson and Owensboro areas of northwest Kentucky downed numerous trees. A gust to 64 MPH was recorded at the Owensboro airport. Numerous trees and/or power lines were down in the Ohio River counties of southwest Indiana. A school was reportedly unroofed in Posey County, IN. In Perry County, Missouri, a downburst and a weak tornado occurred near Friedenbunrg:

...PRELIMINARY DAMAGE SURVEY RESULTS FOR PERRY COUNTY MISSOURI...

THE FOLLOWING IS A PRELIMINARY DAMAGE ASSESSMENT FOR THE DAMAGE THAT OCCURRED OVER PERRY COUNTY MISSOURI ON JULY 21 2006.

- \* EVENT DATE: FRIDAY JULY 21
- \* EVENT TIME: APPROXIMATELY 1226 PM - 1230 PM.
- \* EVENT TYPE: STRAIGHT LINE WIND DAMAGE/F0 TORNADO
  
- \* EVENT BEGINNING LOCATION: COUNTY ROAD 302 NEAR FRIEDENBURG
- \* EVENT ENDING LOCATION: INTERSECTION OF COUNTY ROADS 300 AND 314
  
- \* PEAK WIND: 70 MPH
- \* DAMAGE DIMENSIONS: APPROX. 1 1/2 MILES WIDE BY 2 MILES LONG
- \* INJURIES: NONE
- \* FATALITIES: NONE
  
- \* DISCUSSION/DAMAGE: THE EVENT BEGAN AS A THUNDERSTORM WIND GUST...WHICH CAUSED STRAIGHT LINE WIND DAMAGE. MANY TREE LIMBS WERE BROKEN AND SOME TREES WERE SNAPPED OR UPROOTED. SOME OUTBUILDINGS AND HOMES RECEIVED ROOF DAMAGE...AND ONE HOME HAD A DOOR BLOWN IN. AT THE SOUTHEAST CORNER OF THE DAMAGE PATH...AN F0 TORNADO BRIEFLY DEVELOPED...AND TOSSED HAY BALES INTO A BEAN FIELD...DOWNED TREES AND TOSSED TREE LIMBS IN DIFFERENT DIRECTIONS...AND LIFTED A PORCH OVERHANG ON A HOUSE ENOUGH TO DISLodge THE SUPPORT COLUMNS. OTHER DAMAGE TO SIDING AND SHINGLES OCCURRED. A RESIDENT HEARD A BRIEF ROARING OR RUMBLING SOUND.

Damage Photos





Elsewhere across western Kentucky and southern Illinois, spotty wind damage was reported in the form of isolated trees and power lines. Gusts were mostly estimated from 40 to 50 MPH. The storms were accompanied by very frequent lightning and torrential rainfall. A report of 3 inches of rain in 90 minutes was received across the Ohio River from Owensboro, KY in Spencer County, IN. Minor street flooding was common. Significant flooding of roads and even a few flood-prone homes occurred in the Evansville, Henderson, and Owensboro areas.

A second round of thunderstorms occurred over southern portions of southeast Missouri and western Kentucky during the evening. These storms downed isolated trees and power lines, mostly along and south of a line from Poplar Bluff, MO to Paducah, KY to Hopkinsville.

- **IMAGES and REPORTS:** A detailed listing of storm reports is appended to the bottom of this page. A total of 55 reports were received.

Below is a satellite image of the storm complex over the Lower Ohio Valley at 3:45 P.M. CDT.

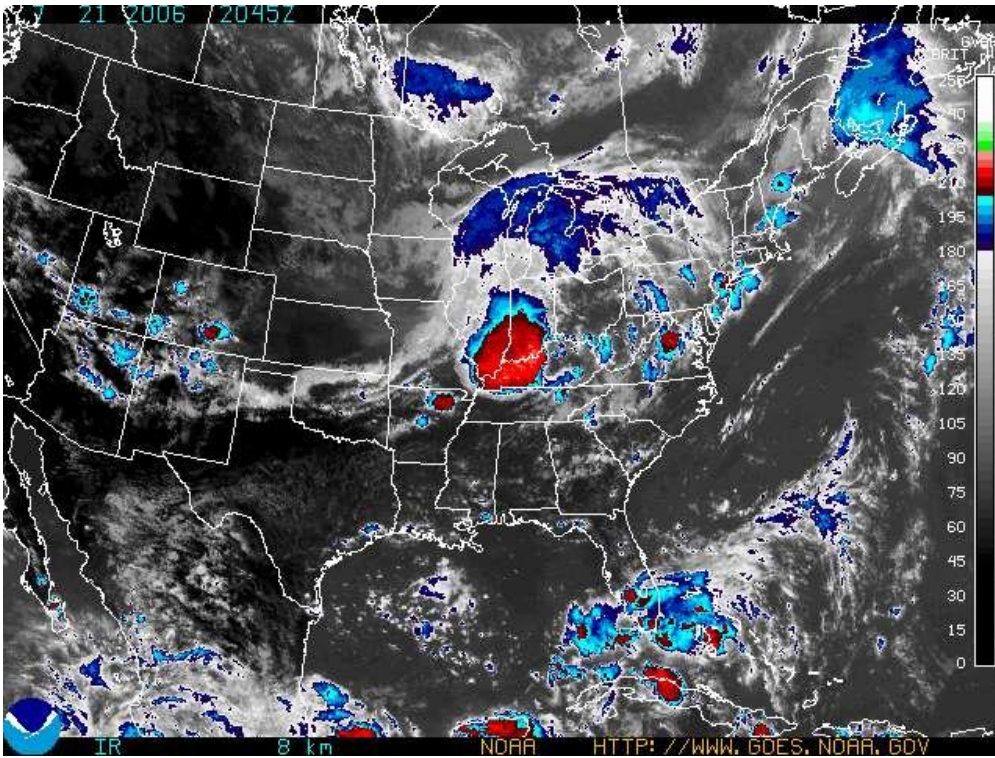


Photo of flooding in southeast part of Evansville, Indiana, courtesy of Kris Conner.



Photo of a mobile home damaged in western Marshall County, KY during the afternoon storms, courtesy of Duane Hawes (Marshall County Emergency Management)



Map of severe thunderstorm watch boxes and lightning strikes overlaid together at 2 P.M. CDT. Over 18,000 cloud-to-ground lightning strikes are plotted in green on this map. These strikes occurred in a one-hour time frame between 1 and 2 P.M.



Photo of a shelf cloud in the Paducah area, courtesy of Beau Dodson. This shelf cloud, which marked the leading edge of gusty winds from an approaching line of thunderstorms, crossed most of McCracken County between 7 and 8 P.M. Wind gusts averaged near 20 MPH as the shelf cloud passed.



Tree down on power lines in Keyes City Park in Du Quoin, IL. This was a familiar sight in many counties on Friday. Photo courtesy of Jeff Proffitt.





# PRELIMINARY LOCAL STORM REPORT...SUMMARY

NATIONAL WEATHER SERVICE PADUCAH KY  
 939 PM CDT FRI JUL 21 2006

| ..TIME...             | ...EVENT...  | ...CITY LOCATION...            | ...LAT.LON...                        |
|-----------------------|--|--------------------------------|--------------------------------------|
| ..DATE...             | ...MAG....   | ..COUNTY LOCATION..ST..        | ...SOURCE....                        |
|                       | ..REMARKS..  |                                |                                      |
| 1236 PM<br>07/21/2006 | TSTM WND DMG   | 4 N WALTONVILLE<br>JEFFERSON   | 38.27N 89.04W<br>IL FIRE DEPT/RESCUE |
|                       | WINDOWS BLOWN OUT OF A HOUSE. LARGE TREE LIMBS DOWN.                               |                                |                                      |
| 1240 PM<br>07/21/2006 | TSTM WND DMG   | 10 W MOUNT VERNON<br>JEFFERSON | 38.32N 89.10W<br>IL TRAINED SPOTTER  |
|                       | 8 INCH TREE LIMBS DOWN   |                                |                                      |
| 1241 PM<br>07/21/2006 | TSTM WND GST<br>E60.00 MPH   | 4 N WALTONVILLE<br>JEFFERSON   | 38.27N 89.04W<br>IL FIRE DEPT/RESCUE |
| 1246 PM<br>07/21/2006 | TSTM WND GST<br>E65.00 MPH   | DIX<br>JEFFERSON               | 38.44N 88.94W<br>IL TRAINED SPOTTER  |
| 1247 PM<br>07/21/2006 | TSTM WND GST<br>E60.00 MPH   | INA<br>JEFFERSON               | 38.15N 88.90W<br>IL TRAINED SPOTTER  |
| 1253 PM<br>07/21/2006 | TSTM WND DMG   | CHRISTOPHER<br>FRANKLIN        | 37.97N 89.05W<br>IL TRAINED SPOTTER  |
|                       | 2 LARGE LIMBS DOWN...ONE LIMB FELL ON CAR  |                                |                                      |
| 1257 PM<br>07/21/2006 | TSTM WND DMG   | SESSER<br>FRANKLIN             | 38.09N 89.05W<br>IL TRAINED SPOTTER  |
|                       | LARGE LIMBS DOWN...TREE DOWN IN SESSER   |                                |                                      |
| 0100 PM<br>07/21/2006 | TSTM WND DMG   | MOUNT VERNON<br>JEFFERSON      | 38.32N 88.91W<br>IL TRAINED SPOTTER  |
|                       | ONE TREE DOWN  |                                |                                      |
| 0101 PM<br>07/21/2006 | TSTM WND DMG   | BENTON<br>FRANKLIN             | 38.01N 88.92W<br>IL NWS EMPLOYEE     |
|                       | SIGNS BLOWN DOWN...TREES DOWN...STANDING WATER ON THE ROAD                         |                                |                                      |
| 0102 PM<br>07/21/2006 | HAIL<br>E0.88 INCH   | 5 SE MOUNT VERNON<br>JEFFERSON | 38.27N 88.85W<br>IL TRAINED SPOTTER  |
| 0108 PM<br>07/21/2006 | TSTM WND DMG   | DU QUOIN<br>PERRY              | 38.00N 89.24W<br>IL EMERGENCY MNGR   |
|                       | TREES AND POWER LINES DOWN CITY WIDE   |                                |                                      |
| 0108 PM<br>07/21/2006 | TSTM WND DMG   | MURPHYSBORO<br>JACKSON         | 37.77N 89.34W<br>IL EMERGENCY MNGR   |
|                       | POWER LINES DOWN   |                                |                                      |
| 0110 PM<br>07/21/2006 | TSTM WND DMG   | MOUNT VERNON<br>JEFFERSON      | 38.32N 88.91W<br>IL TRAINED SPOTTER  |
|                       | SEMI-TRUCK BLOWN OVER ON I-57...TREES DOWN...MODULAR HOMES BLOWN ACROSS INTERSTATE |                                |                                      |
| 0130 PM<br>07/21/2006 | TSTM WND DMG   | DAISY<br>CAPE GIRARDEAU        | 37.52N 89.79W<br>MO DEPT OF HIGHWAYS |

3 FOOT DIAMETER TREES DOWN

0130 PM TSTM WND DMG ELDORADO 37.81N 88.44W  
07/21/2006 SALINE IL LAW ENFORCEMENT

TREES DOWN BETWEEN EL DORADO AND CARRIER MILLS AND  
RALIEGH

0130 PM TSTM WND DMG SEDGEWICKVILLE 37.52N 89.91W  
07/21/2006 BOLLINGER MO LAW ENFORCEMENT

TREES DOWN ACROSS HWY.

0130 PM TSTM WND DMG MCLEANSBORO 38.09N 88.53W  
07/21/2006 HAMILTON IL EMERGENCY MNGR

TREES DOWN ACROSS THE COUNTY...TREE FELL UPON AND  
DESTROYED A MOBILE HOME IN MCLEANSBORO

0145 PM TSTM WND DMG 3 N PERRYVILLE 37.77N 89.87W  
07/21/2006 PERRY MO LAW ENFORCEMENT

SHERIFF OFFICE REPORTED TREES DOWN ON HIGHWAY 5...ABOUT 3  
MILES NORTH OF PERRYVILLE

0210 PM TSTM WND DMG MOUNT VERNON 37.94N 87.90W  
07/21/2006 POSEY IN LAW ENFORCEMENT

TREES AND POWER LINES DOWN COUNTY WIDE

0210 PM TSTM WND DMG 5 NW CAIRO 37.05N 89.24W  
07/21/2006 ALEXANDER IL LAW ENFORCEMENT

TREES DOWN IN OLIVE BRANCH

0210 PM TSTM WND DMG HARRISBURG 37.74N 88.55W  
07/21/2006 SALINE IL LAW ENFORCEMENT

TREES DOWN COUNTY WIDE...TREES FELL DOWN ON DUMP TRUCK  
AND CAR

0210 PM TSTM WND DMG MARION 37.73N 88.94W  
07/21/2006 WILLIAMSON IL EMERGENCY MNGR

TREES DOWN COUNTY WIDE

0210 PM TSTM WND DMG UNIONTOWN 37.77N 87.93W  
07/21/2006 UNION KY TRAINED SPOTTER

LARGE TREE LIMBS DOWN ACROSS TOWN

0213 PM TSTM WND GST UNIONTOWN 37.77N 87.93W  
07/21/2006 E60.00 MPH UNION KY TRAINED SPOTTER

TREE LIMBS DOWN

0220 PM TSTM WND DMG UNIONTOWN 37.77N 87.93W  
07/21/2006 UNION KY TRAINED SPOTTER

ONE TREE DOWN

0230 PM TSTM WND DMG 3 S HENDERSON 37.80N 87.58W  
07/21/2006 HENDERSON KY LAW ENFORCEMENT

POWERLINES DOWN NEAR CHANDLER SCHOOL ROAD AND HWY 60

0230 PM TSTM WND DMG SEBREE 37.60N 87.53W  
07/21/2006 WEBSTER KY LAW ENFORCEMENT

TREES DOWN IN NORTHERN PART OF THE COUNTY

0239 PM TSTM WND DMG BURNA 37.26N 88.39W  
07/21/2006 LIVINGSTON KY TRAINED SPOTTER

TWO TREES DOWN ON HWY 60 1.5 MILES EAST OF  
BURNA...ESTIMATED 40-45 MPH WINDS

0245 PM TSTM WND GST ROBARDS 37.69N 87.56W  
07/21/2006 E0.00 MPH HENDERSON KY TRAINED SPOTTER

50 TO 60 MPH WINDS ESTIMATED

0245 PM TSTM WND DMG HENDERSON 37.84N 87.58W  
07/21/2006 HENDERSON KY TRAINED SPOTTER

ESTIMATED 60-65 MPH WIND DAMAGE...NEIGHBORS FENCE BLOWN  
DOWN.

0254 PM TSTM WND DMG HENDERSON 37.84N 87.58W  
07/21/2006 HENDERSON KY TRAINED SPOTTER

SEVERAL TREES DOWN...SOME ACROSS TRAIN TRACKS

0259 PM TSTM WND GST OWENSBORO 37.76N 87.12W  
07/21/2006 M64.00 MPH DAVIESS KY ASOS

0300 PM TSTM WND DMG EVANSVILLE 37.98N 87.54W  
07/21/2006 VANDERBURGH IN EMERGENCY MNGR

DOWNED POWER LINES IN/AROUND CITY

0300 PM TSTM WND GST OWENSBORO 37.76N 87.12W  
07/21/2006 E70.00 MPH DAVIESS KY EMERGENCY MNGR

HWY 60 ON DAVIESS/HENDERSON CO. LINE...1.40 INCHES OF  
RAIN IN 1 HR

0300 PM TSTM WND DMG DAWSON SPRINGS 37.17N 87.69W  
07/21/2006 HOPKINS KY EMERGENCY MNGR

TREE DOWN ACROSS POWER LINES

0305 PM TSTM WND DMG BEECH GROVE 37.62N 87.38W  
07/21/2006 MCLEAN KY LAW ENFORCEMENT

TREE ON HOME...NUMEROUS TREES ACROSS ROADWAYS

0305 PM TSTM WND DMG SMITHLAND 37.14N 88.40W  
07/21/2006 LIVINGSTON KY LAW ENFORCEMENT

TREES DOWN ACROSS THE COUNTY

0308 PM TSTM WND DMG HENDERSON 37.84N 87.58W  
07/21/2006 HENDERSON KY EMERGENCY MNGR

COUNTY WIDE TREES DOWN AND POSSIBLE STRUCTURAL DAMAGE

0310 PM TSTM WND DMG MADISONVILLE 37.34N 87.51W  
07/21/2006 HOPKINS KY LAW ENFORCEMENT

TREES DOWN COUNTY WIDE...ESPECIALLY SOUTH OF MADISONVILLE  
AND JUST NORTHWEST OF MADISONVILLE

0312 PM TSTM WND DMG 1 E OWENSBORO 37.76N 87.10W  
07/21/2006 DAVIESS KY TRAINED SPOTTER

SEVERAL 15-20 FOOT LIMBS DOWN

0315 PM TSTM WND DMG BENTON 36.85N 88.36W  
07/21/2006 MARSHALL KY LAW ENFORCEMENT

SEVERAL TREES DOWN ACROSS THE COUNTY...ROOF BLOWN OFF  
MOBILE HOME NEAR OAK LEVEL HIGHWAY

0335 PM TSTM WND DMG ROCKPORT 37.88N 87.05W  
07/21/2006 SPENCER IN TRAINED SPOTTER

SOME TREES DOWN...60-70 MPH ESTIMATED WIND GUST

0345 PM FLASH FLOOD 3 N ROCKPORT 37.93N 87.05W  
07/21/2006 SPENCER IN EMERGENCY MNGR

FLOODING OF 231 N., JUST NORTH OF ROCKPORT...BETWEEN  
ROCKPORT AND CHRISNEY

0345 PM FLASH FLOOD ROCKPORT 37.88N 87.05W  
07/21/2006 SPENCER IN TRAINED SPOTTER

WATER DEPTH ON ROADS IS UP TO CAR BUMPERS

0410 PM TSTM WND DMG ELKTON 36.81N 87.16W  
07/21/2006 TODD KY EMERGENCY MNGR

TREES DOWN IN ELKTON...ESTIMATED 40-45 MPH WIND GUST

0420 PM FLASH FLOOD EVANSVILLE 37.98N 87.54W  
07/21/2006 VANDERBURGH IN EMERGENCY MNGR

STANDING WATER ON RAODS AND A FEW HOMES IN A SUBDIVISION  
WHICH TYPICALLY FLOODS.

0430 PM FLASH FLOOD PHILPOT 37.73N 86.99W  
07/21/2006 DAVIESS KY FIRE DEPT/RESCUE

WATER OVER HIGHWAY 142 SOUTH OF PHILPOT AND THROUGHOUT  
THE COUNTY

0430 PM FLASH FLOOD 3 NNW OWENSBORO 37.80N 87.14W  
07/21/2006 SPENCER IN TRAINED SPOTTER

3.01 INCHES IN 90 MINUTES

0435 PM FLASH FLOOD HENDERSON 37.84N 87.58W  
07/21/2006 HENDERSON KY EMERGENCY MNGR

WATER OVER THE ROADS COUNTY WIDE WITH A FEW CARS TRAPPED

0454 PM FLASH FLOOD ROCKPORT 37.88N 87.05W  
07/21/2006 SPENCER IN LAW ENFORCEMENT

NUMEROUS ROADS UNDERWATER

0739 PM HAIL BARDWELL 36.87N 89.01W  
07/21/2006 E0.75 INCH CARLISLE KY LAW ENFORCEMENT

0750 PM TSTM WND DMG HICKMAN 36.56N 89.19W  
07/21/2006 FULTON KY LAW ENFORCEMENT

TREES DOWN IN HICKMAN...ESTIMATED GUST TO 60 MPH

0800 PM TSTM WND DMG LONE OAK 37.04N 88.67W  
07/21/2006 MCCRACKEN KY BROADCAST MEDIA

TREES DOWN

0806 PM TSTM WND DMG PADUCAH 37.07N 88.64W  
07/21/2006 MCCRACKEN KY BROADCAST MEDIA

POWER LINES DOWN IN WESTERN PADUCAH

0810 PM TSTM WND DMG 4 N MAYFIELD 36.79N 88.65W  
07/21/2006 GRAVES KY LAW ENFORCEMENT

SEVERAL TREES DOWN

0850 PM TSTM WND DMG TRIGG FURNACE 36.89N 87.94W  
07/21/2006 TRIGG KY LAW ENFORCEMENT

TREES DOWN