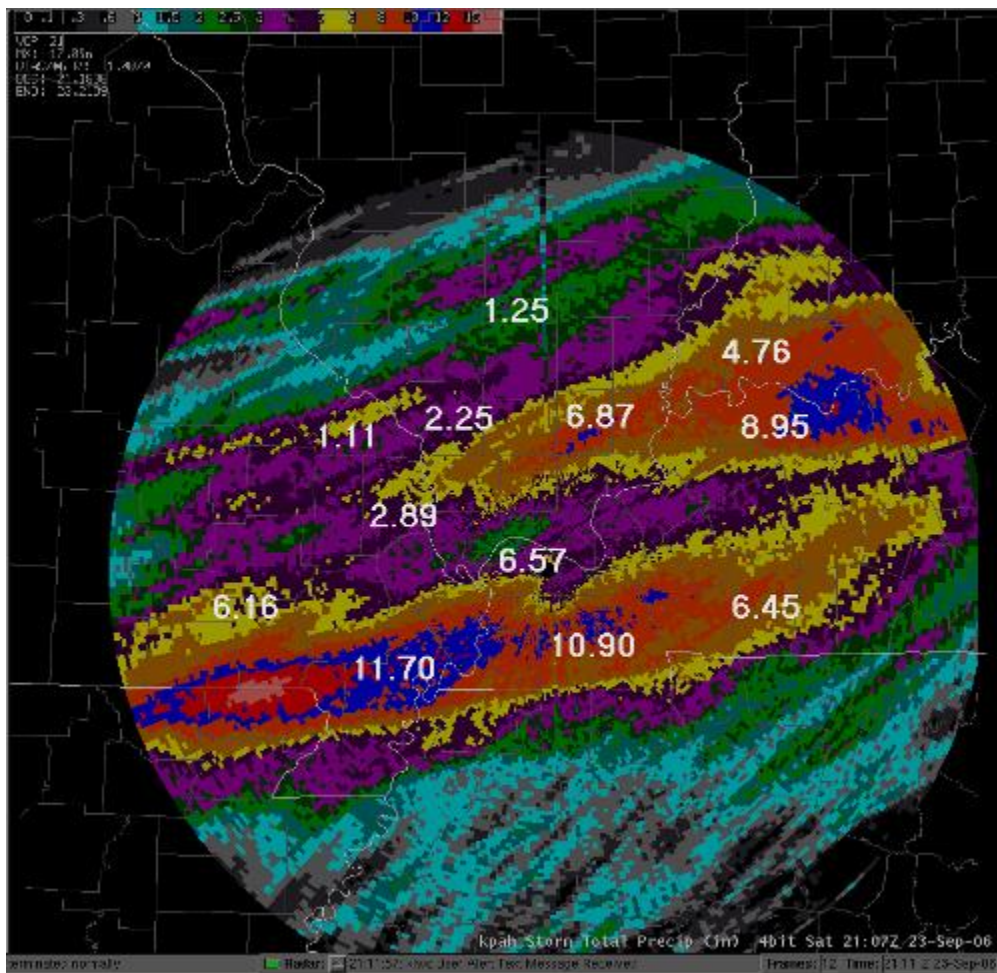


- September, 2006 was the wettest September on record at some locations, including Paducah. At the Paducah NWS office, the monthly rainfall total was 11.65 inches, surpassing the previous record rainfall for September, which was 9.23 inches in 1985. At Evansville, the monthly total of 8.75 inches made this the second wettest September on record.
- The highest three-day rainfall from Sept. 22-24 was **13.82** inches at Mayfield, KY, where over one hundred persons were evacuated. Flooding of smaller rivers and creeks continued through Sept. 25. Of particular concern were Mayfield Creek, the Little River, and the Clarks River in western Kentucky. There were two fatalities indirectly resulting from the weather. A car hydroplaned on the Western Kentucky Parkway, resulting in a fatal wreck. There was one fatality in Calloway County, KY, when a person drove into a washed out section of road. Kentucky State Police received over 100 calls from motorists who became stranded in floodwaters.
- Large rivers such as the lower Ohio and Mississippi Rivers remained below flood stage.

The display below is KPAH WSR-88D Storm Total Precipitation estimation of rainfall Friday through Sunday, Sept. 22-24. Overlaid on the display are actually rainfall totals from observers and automated gauges. Shades of royal blue indicate over 10 inches, and red shades within the blue area indicate 12 inches. These estimates are in excellent agreement with actual 3-day observed totals in the table below the graphic.



The most severe flash flooding was observed in the heaviest rain area, along the Missouri/Arkansas border east across the Tennessee border counties of western Kentucky.

PUBLIC INFORMATION STATEMENT
 NATIONAL WEATHER SERVICE PADUCAH KY
 443 AM CDT MON SEP 25 2006

...THREE DAY RAINFALL TOTALS ENDING SATURDAY NIGHT...

COPIOUS RAINFALL RESULTED FROM NUMEROUS ROUNDS OF THUNDERSTORMS ACROSS THE REGION FROM THURSDAY NIGHT THROUGH SATURDAY NIGHT. SOME LOCATIONS RECEIVED OVER A FOOT OF RAINFALL DURING THIS PERIOD. LISTED BELOW ARE SOME STORM TOTAL REPORTS. REPORTS WITH AN ASTERISK ARE ONLY 48 HOUR TOTALS.

AT THE NWS OFFICE IN PADUCAH KENTUCKY... 6.61

AIRPORTS...

CAPE GIRARDEAU	2.89	CARBONDALE	2.25	EVANSVILLE	4.76
PADUCAH	6.57	POPLAR BLUFF	6.16	OWENSBORO	5.11

KENTUCKY COOPERATIVE OBSERVERS...

CADIZ	8.34	CALHOUN/LOCK2	4.06	CANTON	7.48
COBB	6.85	CRUTCHFIELD	9.79	DAWSON SPRINGS	5.55
DIXON	3.05*	HENDERSON KSP	7.12	HERNDON	4.73
HOPKINSVILLE	8.28	KENLAKE SP	8.48	LA CENTER 2N	8.08
LA CENTER 7SSE	8.18	LIVERMORE	6.32	MAYFIELD KSP	13.82
MORGANFIELD	5.25	OWENSBORO	5.34	PADUCAH 4WSW	4.79
POWDERLY	2.73*	PRINCETON	6.85	PROVIDENCE	3.11
SEBREE	4.43	SPOTTSVILLE L/D	6.26	W PADUCAH NWS	6.61

KENTUCKY MEDIA OBSERVERS...

MURRAY 7.50

INDIANA COOPERATIVE OBSERVERS...

BOONVILLE	5.43	GRANDVIEW	8.01	MOUNT VERNON	6.21
PETERSBURG	3.32	ST. MEINRAD	5.31	STENDALL	3.08

INDIANA COMMUNITY OBSERVERS...

BOONVILLE 2N	6.20	DARMSTADT 4NNW	4.19	DARMSTADT 4SSW	5.56
DARMSTADT 6WSW	5.03	EVANSVILLE 1SSE	6.25	EVANSVILLE 3N	5.04
EVANSVILLE 3NNE	4.67	EVANSVILLE 4W	5.60	EVANSVILLE 4ESE	5.75
EVANSVILLE 6WNW	5.31	EVANSVILLE 6WSW	6.81	MELODY HILL 3WNW	4.89
NEWBURGH 2NNW	5.45	NEWBURGH 2NW	5.41	NEWBURGH 3N	5.68
NEWBURGH 5NNE	5.72	POSEYVILLE 3NW	2.79		

ILLINOIS COOPERATIVE OBSERVERS...

CAIRO	3.49*	CARBONDALE	3.33	DIX	2.61
DUQUOIN	2.79	FORT MASSAC	3.90*	GRAND CHAIN/53	2.41
GRAYVILLE	1.90	PINCKNEYVILLE	1.92	PLUMFIELD	2.39
ROSICLARE	3.25	SHAWNEETOWN	5.25	SMITHLAND L/D	5.30
WALTONVILLE	1.26				

ILLINOIS MEDIA OBSERVERS...

AVA 3.48 THOMSONVILLE 4.10

MISSOURI COOPERATIVE OBSERVERS...

BERNIE	10.90	CAPE GIRARDEAU	3.43	DONIPHAN	8.91
JACKSON	3.64	LK WAPPAPELLO	2.84	NEW MADRID	11.70*

PERRYVILLE	3.37	POPLAR BLUFF	7.96	QULIN	13.35
SIKESTON	6.05	WAPPAPELLO DAM	4.15	ZALMA	2.80
MISSOURI MEDIA OBSERVERS...					
DEXTER	7.50	JACKSON	3.70	NEW MADRID	12.35
SIKESTON	5.50				