

MAY 15, 2007 SEVERE WEATHER RECAP

A strong cold front moved southeast across Missouri on Tuesday. A line of thunderstorms along the front reached southeast Missouri by mid-afternoon. As this line of storms approached the Mississippi River, new thunderstorm development occurred over western Kentucky and southern Illinois. These new storms formed in a very warm and unstable atmosphere heated by almost unabated sunshine. The new storms turned out to produce most of the severe weather reports, consisting mostly of marginally severe hail and wind gusts to around 60 MPH. The initial line of storms over southeast Missouri weakened as it moved east, crossing into cooler air that was stabilized by the new thunderstorms. Winds in the mid and upper levels of the atmosphere were marginally favorable for organized storm structures. Some of the storms evolved into small lines capable of damaging winds. The wind shear, or change of wind speed and direction with height, was not supportive of storm rotation. As a result, all of the reported wind damage was the result of straight-line winds.

Complete list of warnings and local storm reports:

Note: all time are in Coordinated Universal Time (UTC) which is 5 hours ahead of Central Daylight Time (CDT).

WARNINGS ISSUED

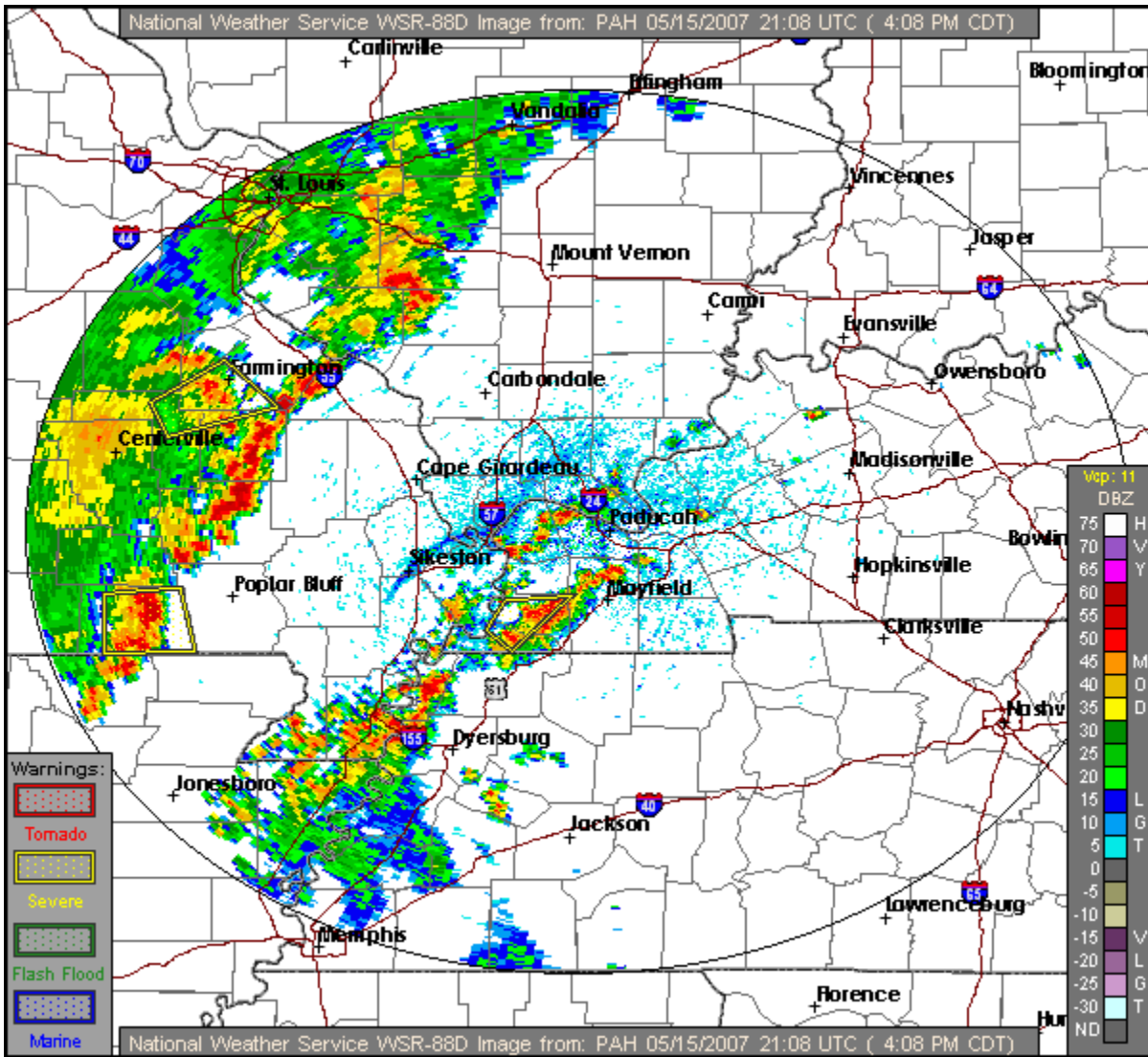
WARNING	COUNTY	ISSUED	EXPIRED
SEVERE THUNDERSTORM	BALLARD, KY	05/15/2007 20:20 UTC	05/15/2007 20:45 UTC
SEVERE THUNDERSTORM	FULTON, KY	05/15/2007 20:33 UTC	05/15/2007 21:15 UTC
SEVERE THUNDERSTORM	HICKMAN, KY	05/15/2007 20:33 UTC	05/15/2007 21:15 UTC
SEVERE THUNDERSTORM	RIPLEY, MO	05/15/2007 20:57 UTC	05/15/2007 21:45 UTC
SEVERE THUNDERSTORM	BUTLER, MO	05/15/2007 21:20 UTC	05/15/2007 22:15 UTC
FLASH FLOOD	HICKMAN, KY	05/15/2007 21:21 UTC	05/16/2007 00:15 UTC
FLASH FLOOD	FULTON, KY	05/15/2007 21:21 UTC	05/16/2007 00:15 UTC
SEVERE THUNDERSTORM	BALLARD, KY	05/15/2007 21:22 UTC	05/15/2007 22:00 UTC
SEVERE THUNDERSTORM	MASSAC, IL	05/15/2007 21:32 UTC	05/15/2007 22:15 UTC
SEVERE THUNDERSTORM	MCCRACKEN, KY	05/15/2007 21:32 UTC	05/15/2007 22:15 UTC
SEVERE THUNDERSTORM	CRITTENDEN, KY	05/15/2007 21:37 UTC	05/15/2007 22:00 UTC
SEVERE THUNDERSTORM	BOLLINGER, MO	05/15/2007 21:48 UTC	05/15/2007 22:30 UTC
SEVERE THUNDERSTORM	CAPE GIRARDEAU, MO	05/15/2007 21:48 UTC	05/15/2007 22:30 UTC
SEVERE THUNDERSTORM	POPE, IL	05/15/2007 21:51 UTC	05/15/2007 22:30 UTC
SEVERE THUNDERSTORM	LIVINGSTON, KY	05/15/2007 21:51 UTC	05/15/2007 22:30 UTC
SEVERE THUNDERSTORM	CRITTENDEN, KY	05/15/2007 22:05 UTC	05/15/2007 23:00 UTC
SEVERE THUNDERSTORM	HENDERSON, KY	05/15/2007 22:30 UTC	05/15/2007 23:30 UTC
SEVERE THUNDERSTORM	UNION, KY	05/15/2007 22:30 UTC	05/15/2007 23:30 UTC
SEVERE THUNDERSTORM	WEBSTER, KY	05/15/2007 22:30 UTC	05/15/2007 23:30 UTC
SEVERE THUNDERSTORM	UNION, IL	05/15/2007 22:39 UTC	05/15/2007 23:30 UTC
SEVERE THUNDERSTORM	PULASKI, IL	05/15/2007 22:39 UTC	05/15/2007 23:30 UTC
SEVERE THUNDERSTORM	JOHNSON, IL	05/15/2007 22:39 UTC	05/15/2007 23:30 UTC
SEVERE THUNDERSTORM	CALLOWAY, KY	05/15/2007 22:46 UTC	05/15/2007 23:30 UTC
SEVERE THUNDERSTORM	GRAVES, KY	05/15/2007 22:46 UTC	05/15/2007 23:30 UTC

SEVERE THUNDERSTORM	MARSHALL, KY	05/15/2007 22:46 UTC	05/15/2007 23:30 UTC
SEVERE THUNDERSTORM	GALLATIN, IL	05/15/2007 22:54 UTC	05/15/2007 23:30 UTC
SEVERE THUNDERSTORM	JOHNSON, IL	05/15/2007 22:56 UTC	05/15/2007 23:30 UTC
SEVERE THUNDERSTORM	SPENCER, IN	05/15/2007 22:59 UTC	05/16/2007 00:00 UTC
SEVERE THUNDERSTORM	WARRICK, IN	05/15/2007 22:59 UTC	05/16/2007 00:00 UTC
SEVERE THUNDERSTORM	DAVIESS, KY	05/15/2007 22:59 UTC	05/16/2007 00:00 UTC
SEVERE THUNDERSTORM	HOPKINS, KY	05/15/2007 23:07 UTC	05/16/2007 00:00 UTC
SEVERE THUNDERSTORM	CALDWELL, KY	05/15/2007 23:07 UTC	05/16/2007 00:00 UTC
SEVERE THUNDERSTORM	POPE, IL	05/15/2007 23:12 UTC	05/15/2007 23:45 UTC
SEVERE THUNDERSTORM	SALINE, IL	05/15/2007 23:12 UTC	05/15/2007 23:45 UTC
SEVERE THUNDERSTORM	TRIGG, KY	05/15/2007 23:19 UTC	05/16/2007 00:00 UTC
SEVERE THUNDERSTORM	POSEY, IN	05/15/2007 23:19 UTC	05/15/2007 23:45 UTC
SEVERE THUNDERSTORM	CHRISTIAN, KY	05/15/2007 23:33 UTC	05/16/2007 00:30 UTC
SEVERE THUNDERSTORM	DAVIESS, KY	05/15/2007 23:52 UTC	05/16/2007 00:15 UTC
SEVERE THUNDERSTORM	MCLEAN, KY	05/15/2007 23:52 UTC	05/16/2007 00:15 UTC
SEVERE THUNDERSTORM	VANDEBURGH, IN	05/15/2007 23:56 UTC	05/16/2007 00:45 UTC

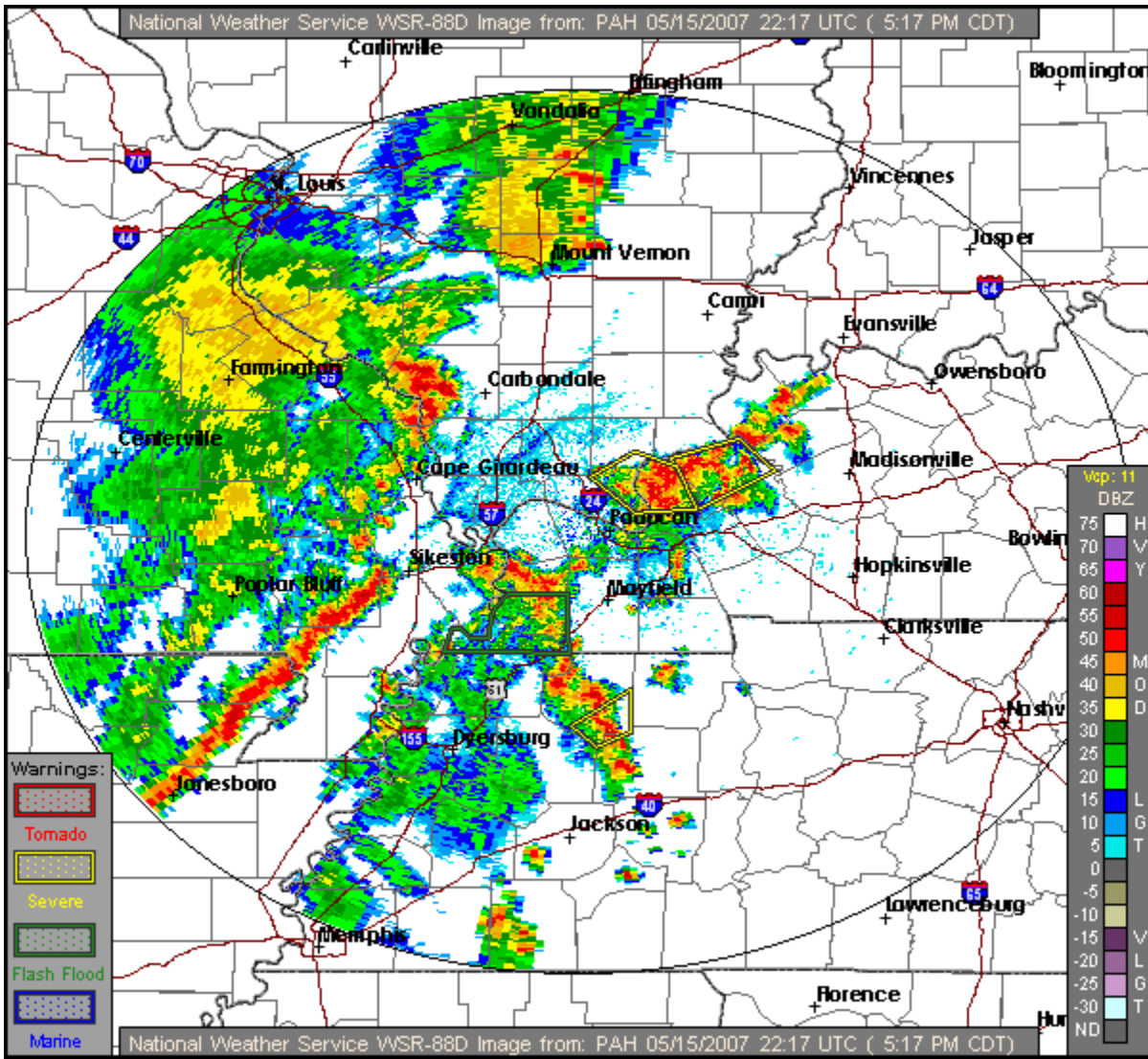
STORM REPORTS				
REPORT	COUNTY	LOCATION	REPORTED BY	DATE
TSTM WND GST - E50.00 MPH	BALLARD	LA CENTER	EMERGENCY MNGR	05/15/2007 20:40 UTC
TSTM WND DMG	BALLARD	LA CENTER	TRAINED SPOTTER	05/15/2007 20:43 UTC
HAIL - E0.75 INCH	RIPLEY	4 S GRANDIN	TRAINED SPOTTER	05/15/2007 21:06 UTC
TSTM WND GST - M60 MPH	BUTLER	7 E NEELYVILLE	TRAINED SPOTTER	05/15/2007 21:23 UTC
TSTM WND DMG	MCCRACKEN	WOODVILLE	EMERGENCY MNGR	05/15/2007 21:39 UTC
TSTM WND GST - M60.00 MPH	BUTLER	7 E NEELYVILLE	TRAINED SPOTTER	05/15/2007 21:39 UTC
TSTM WND DMG	BALLARD	KEVIL	TRAINED SPOTTER	05/15/2007 21:40 UTC
TSTM WND DMG	BOLLINGER	MARBLE HILL	EMERGENCY MNGR	05/15/2007 21:40 UTC
HAIL - M0.75 INCH	CRITTENDEN	MARION	EMERGENCY MNGR	05/15/2007 21:41 UTC
TSTM WND DMG	MASSAC	5 E METROPOLIS	LAW ENFORCEMENT	05/15/2007 21:47 UTC
TSTM WND DMG	MASSAC	BROOKPORT	LAW ENFORCEMENT	05/15/2007 21:50 UTC
TSTM WND DMG	MASSAC	BROOKPORT	LAW ENFORCEMENT	05/15/2007 21:50 UTC

HAIL - M1.00 INCH	MASSAC	METROPOLIS	EMERGENCY MNGR	05/15/2007 21:55 UTC
TSTM WND DMG	POPE	GOLCONDA	LAW ENFORCEMENT	05/15/2007 21:55 UTC
HAIL - E0.75 INCH	STODDARD	8 SE DEXTER	EMERGENCY MNGR	05/15/2007 22:17 UTC
TSTM WND DMG	WEBSTER	WHEATCROFT	LAW ENFORCEMENT	05/15/2007 22:45 UTC
HEAVY RAIN - M2.71 INCH	POSEY	5 S POSEYVILLE	TRAINED SPOTTER	05/15/2007 22:45 UTC
HAIL - E0.75 INCH	GRAVES	MAYFIELD	TRAINED SPOTTER	05/15/2007 22:48 UTC
HAIL - E0.75 INCH	CALLOWAY	2 W LYNN GROVE	TRAINED SPOTTER	05/15/2007 22:53 UTC
HAIL - E0.88 INCH	HENDERSON	HENDERSON	TRAINED SPOTTER	05/15/2007 22:55 UTC
HAIL - E1.00 INCH	JOHNSON	1 W VIENNA	TRAINED SPOTTER	05/15/2007 22:55 UTC
TSTM WND DMG	CALLOWAY	1 S MURRAY	EMERGENCY MNGR	05/15/2007 22:56 UTC
HAIL - E0.88 INCH	POSEY	5 N MOUNT VERNON	TRAINED SPOTTER	05/15/2007 23:15 UTC
TSTM WND GST - M61 MPH	DAVISS	9 NE OWENSBORO	TRAINED SPOTTER	05/15/2007 23:25 UTC
HAIL - E0.88 INCH	SPENCER	DALE	EMERGENCY MNGR	05/15/2007 23:35 UTC
HAIL - E1.00 INCH	SPENCER	DALE	EMERGENCY MNGR	05/15/2007 23:38 UTC
HAIL - E1.00 INCH	PIKE	PETERSBURG	TRAINED SPOTTER	05/15/2007 23:46 UTC
TSTM WND DMG	DAVISS	WHITESVILLE	EMERGENCY MNGR	05/15/2007 23:48 UTC
HEAVY RAIN - E2.00 INCH	HOPKINS	MADISONVILLE	TRAINED SPOTTER	05/16/2007 00:00 UTC
TSTM WND DMG	DAVISS	WHITESVILLE	EMERGENCY MNGR	05/16/2007 00:00 UTC
TSTM WND DMG	CHRISTIAN	HOPKINSVILLE	TRAINED SPOTTER	05/16/2007 00:05 UTC

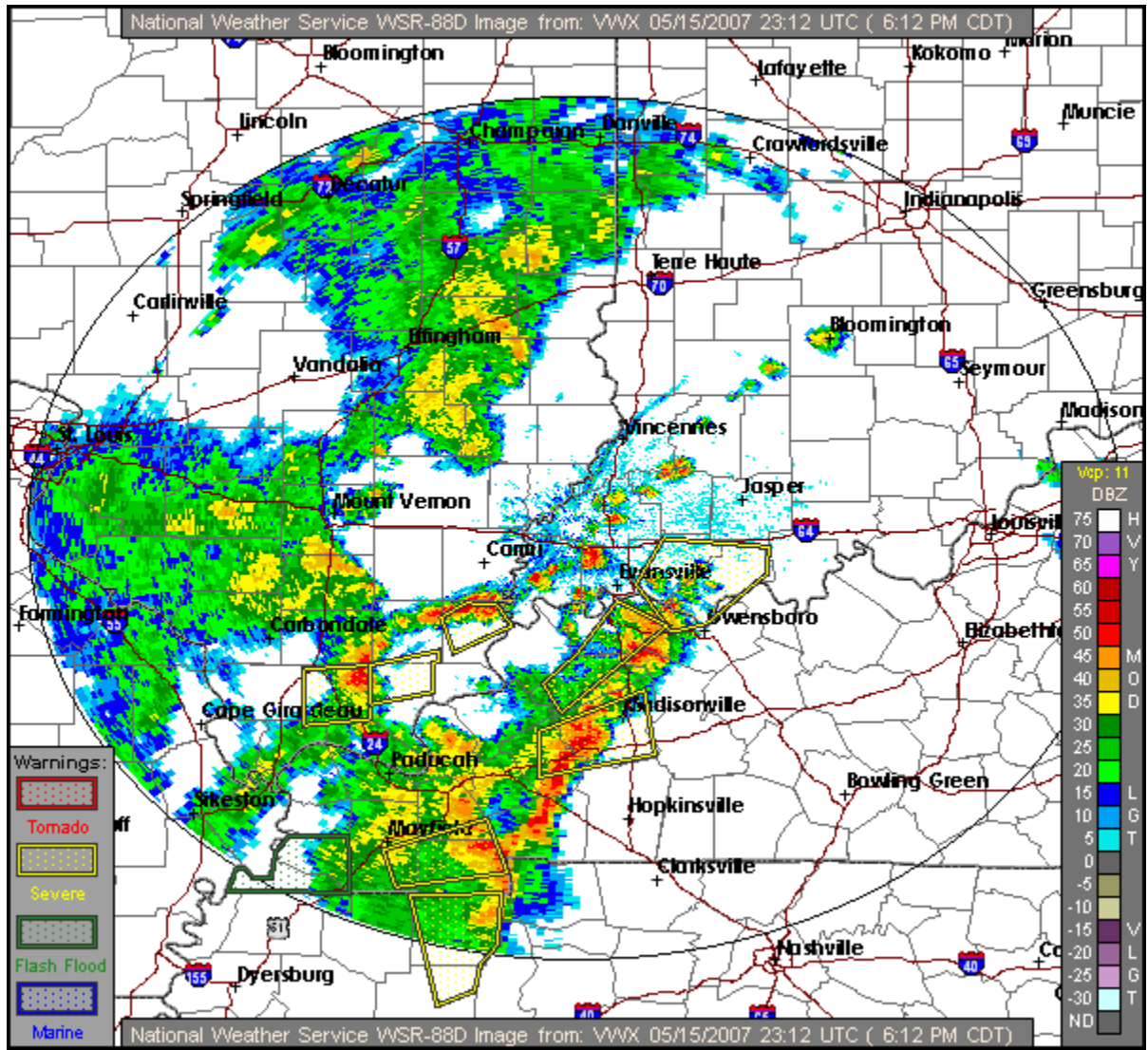
408pm:



517pm:



621pm:



A map below shows the location of severe weather reports that were received at the National Weather Service.

MAY 15 - 16, 2007 STORM REPORTS

H=Hail W=Wind F=Flash Flood T=Tornado

