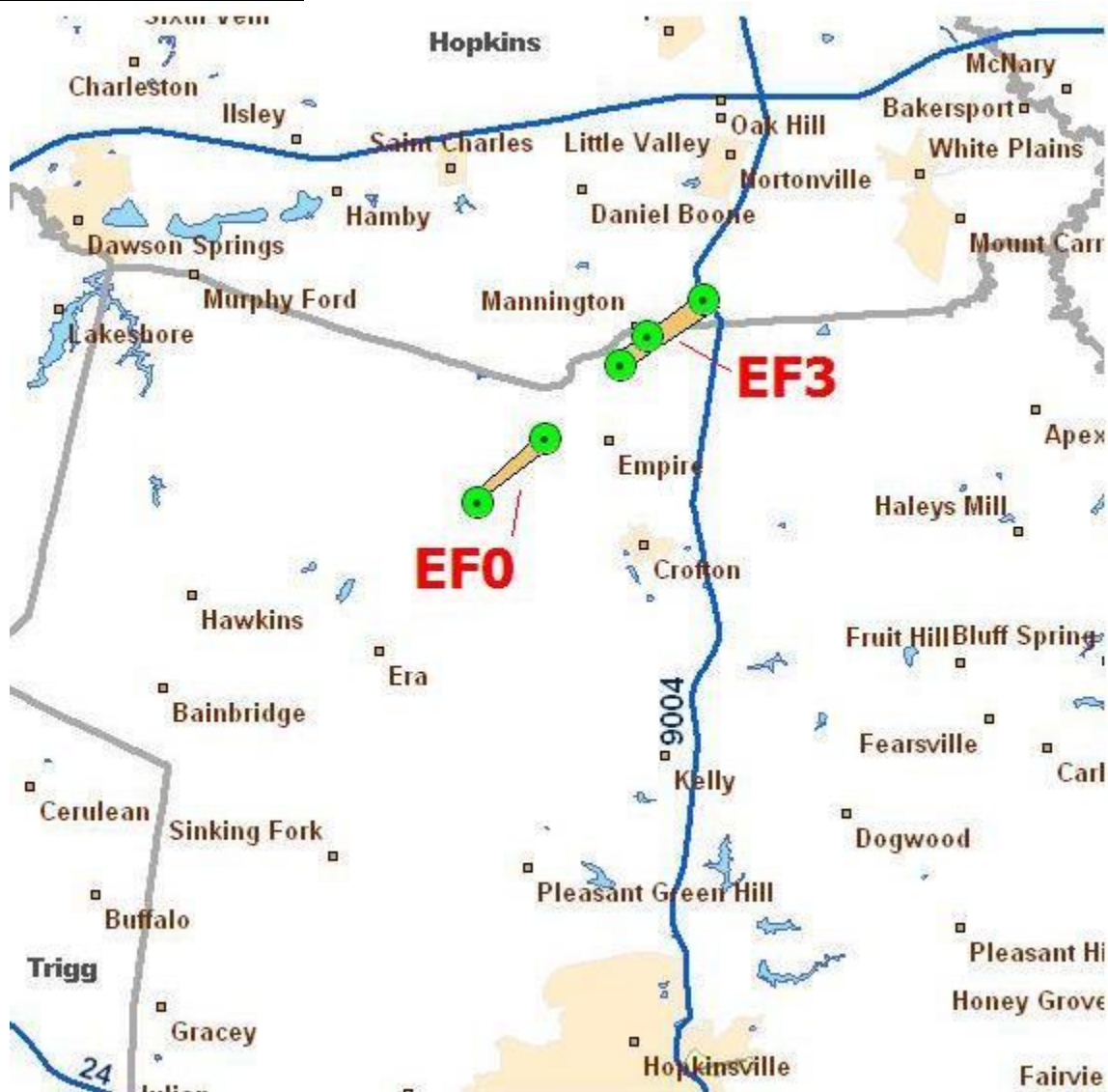


Following the damaging bow echo of April 9th, large hail and tornadoes swept across western Kentucky from mid morning through early afternoon on Friday April 10th, 2009.

Christian County, KY



PUBLIC INFORMATION STATEMENT
NATIONAL WEATHER SERVICE PADUCAH KY
219 PM CDT SAT APR 11 2009

...DAMAGE SURVEY RESULTS FOR CHRISTIAN COUNTY KENTUCKY...

THE FOLLOWING IS A PRELIMINARY DAMAGE ASSESSMENT FOR TWO
TORNADO PATHS THAT OCCURRED IN NORTHERN CHRISTIAN COUNTY ON
FRIDAY APRIL 10TH 2009.

THIS IS AN UPDATE TO INCLUDE EVENT TIMES.

THE STRONGER TORNADO PATH SURVEYED:

* EVENT TIME - APPROXIMATELY 1154 AM CDT

- * EVENT TYPE - **EF3 TORNADO**
- * EVENT LOCATION - BEGAN 0.5 MILES SOUTHWEST OF MANNINGTON AND ENDED 1.5 MILES NORTHEAST OF MANNINGTON
- * PEAK WIND - 140 MPH
- * AVERAGE PATH WIDTH - 75 YARDS
- * PATH LENGTH - 2 MILES
- * INJURIES - TWO
- * DAMAGE - ONE HOME LEVELLED OFF FOUNDATION

ANOTHER TORNADO PATH SURVEYED:

- * EVENT TIME - APPROXIMATELY 1147 AM CDT
- * EVENT TYPE - **EF0 TORNADO**
- * EVENT LOCATION - BEGAN 4 MILES NORTHWEST OF CROFTON AND ENDED 3.5 MILES NORTH OF CROFTON
- * PEAK WIND - 75 MPH
- * AVERAGE PATH WIDTH - 50 YARDS
- * PATH LENGTH - 1.5 MILES

\$\$

Two photos of home leveled near Mannington, in Christian County Kentucky

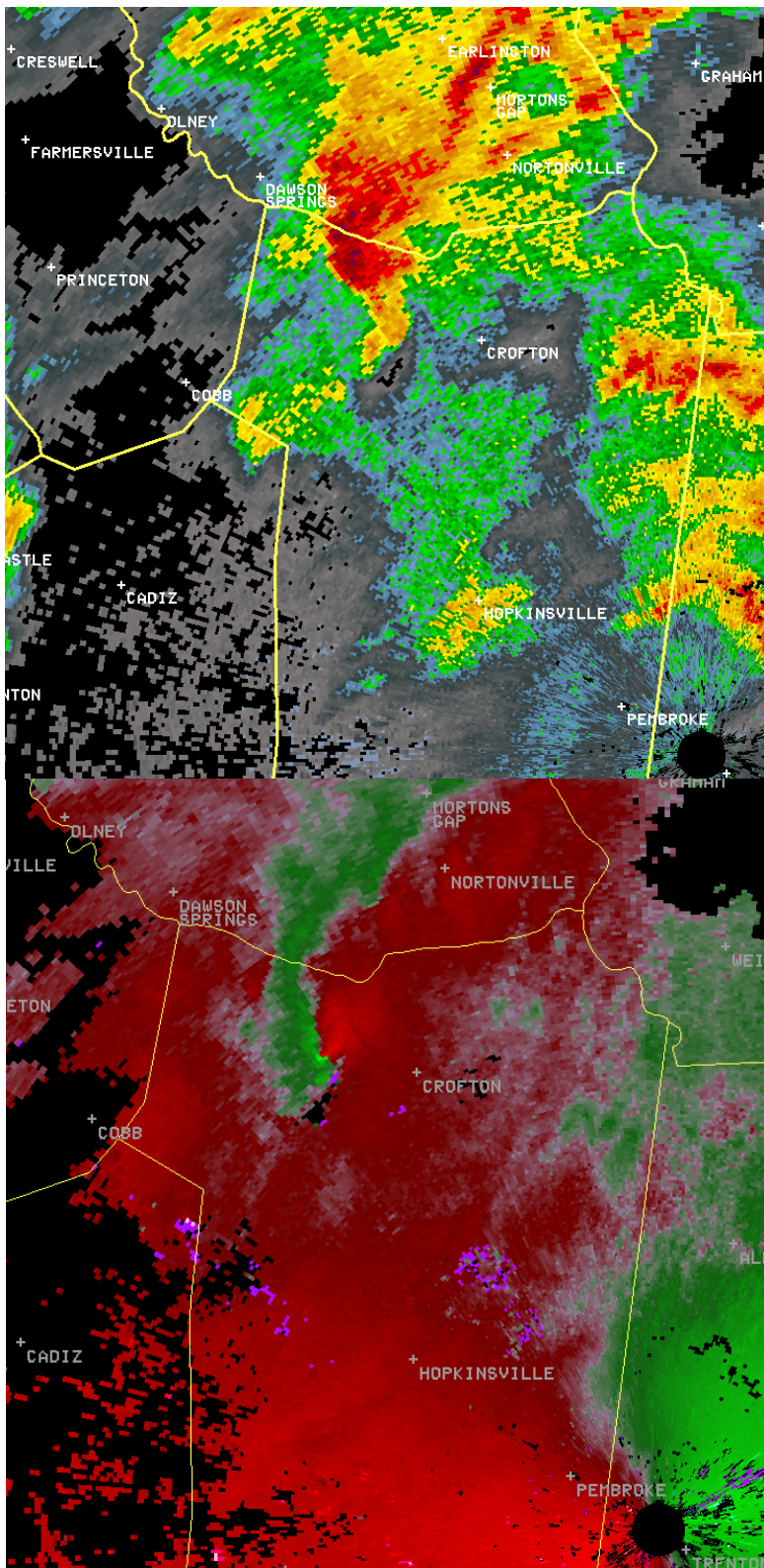




Baseball size hail 2 miles SW of Crofton, KY

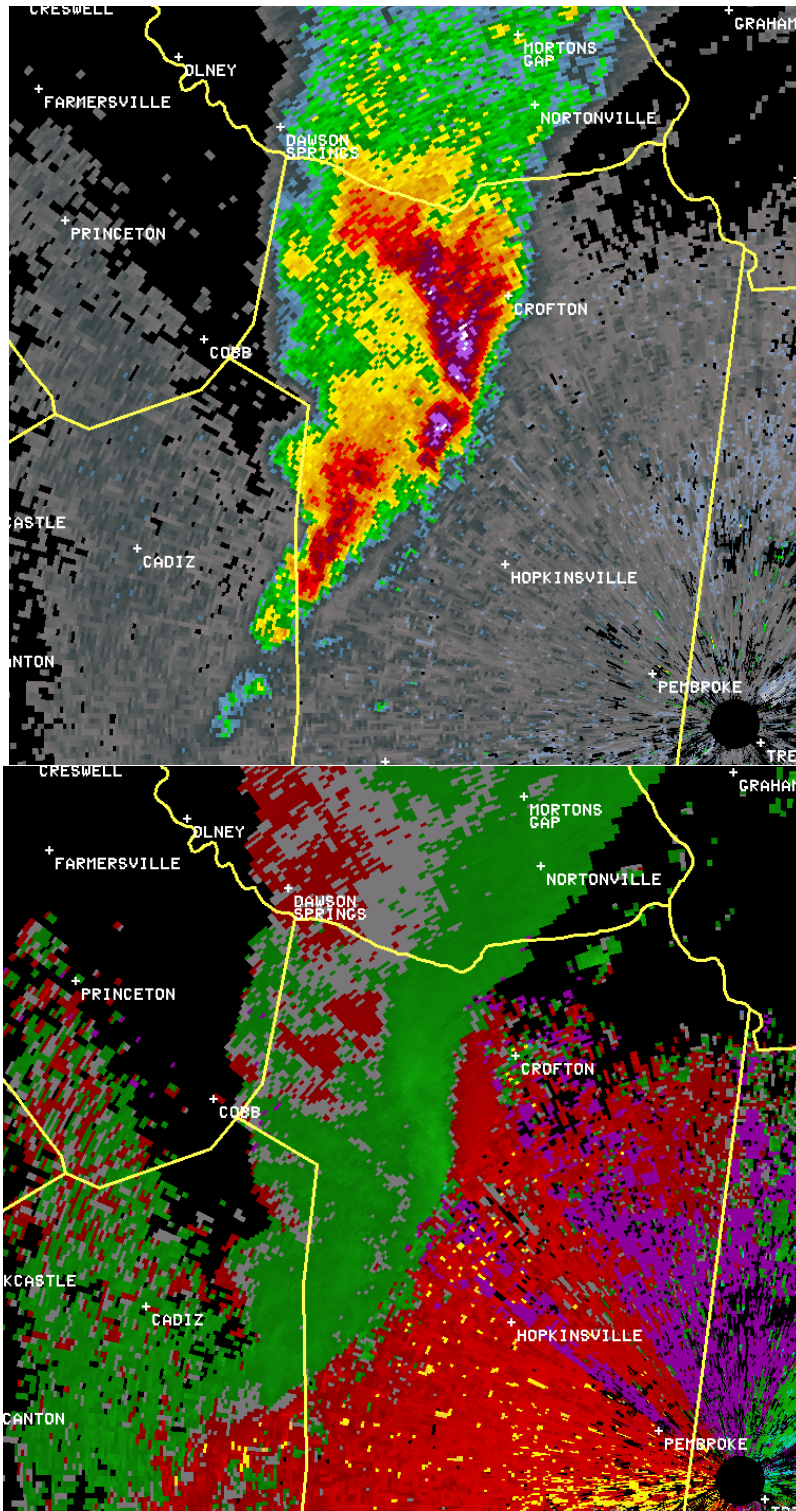


Reflectivity image of the first severe storm which produced damage in Mannington (northern Christian County, KY) at 1143 AM CDT.

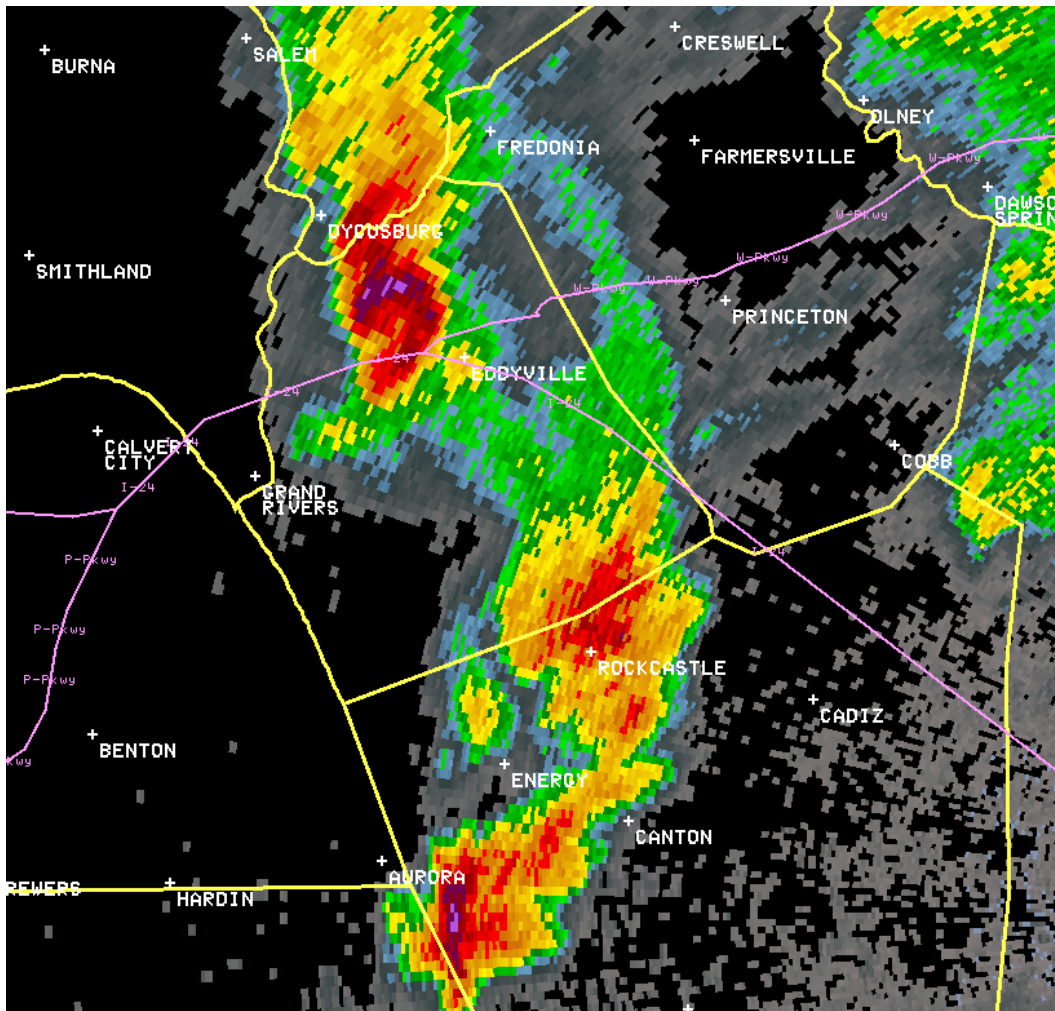


Storm Relative Velocity image of the first severe storm which produced possible tornado damage in Mannington (northern Christian County, KY) at 1143 AM CDT.

Reflectivity image of second severe storm that produced damaging hail and possibly a second tornado in Christian County KY.



Storm Relative Velocity image of second severe storm that produced damaging hail and possibly a second tornado in Christian County KY.



Reflectivity image from severe storm which may have been responsible for damage in Eddyville, KY around 1115am CDT.

Lyon County, KY

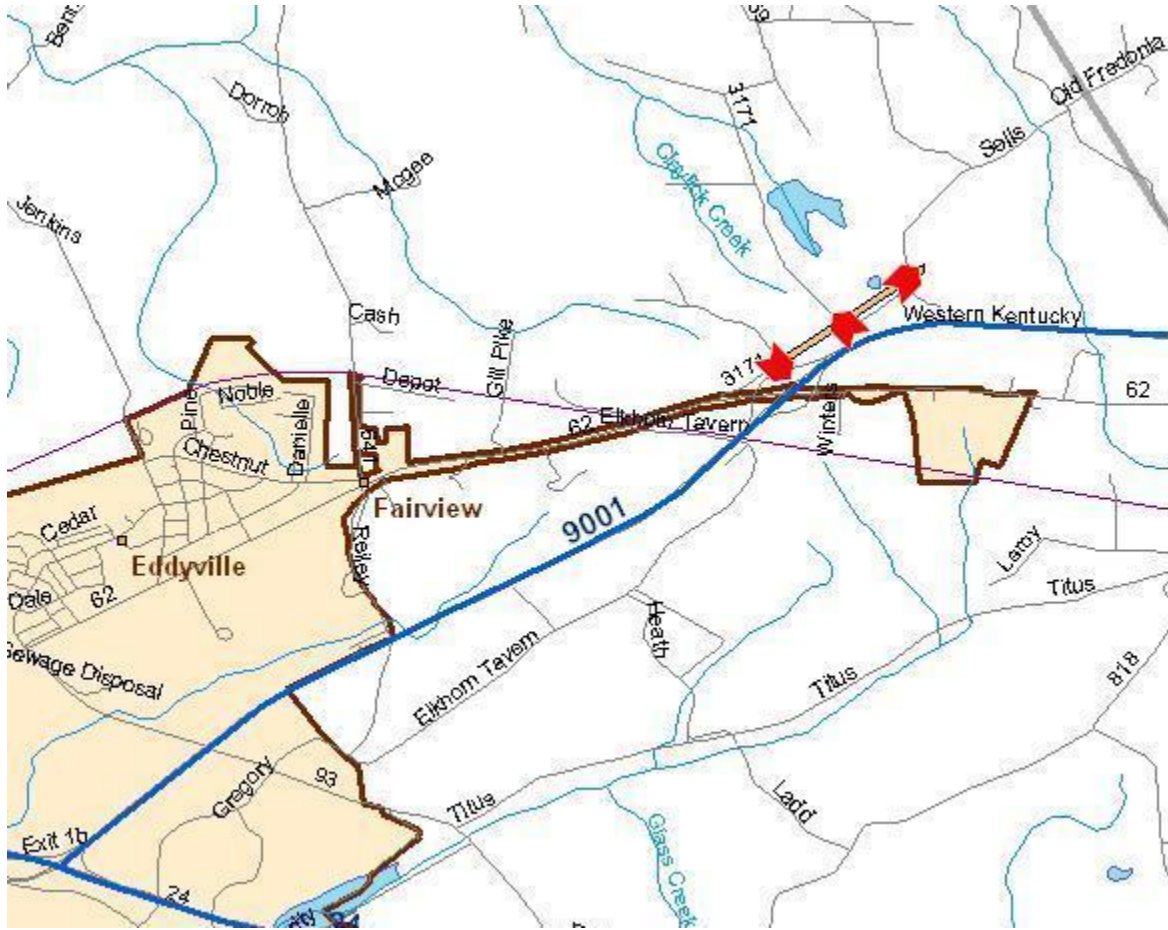
PUBLIC INFORMATION STATEMENT
 NATIONAL WEATHER SERVICE PADUCAH KY
 724 PM CDT FRI APR 11 2009

...DAMAGE SURVEY RESULTS FOR AN EF1 TORNADO THAT OCCURRED IN LYON COUNTY KENTUCKY...

THE FOLLOWING IS A PRELIMINARY DAMAGE ASSESSMENT FOR THE LYON COUNTY KENTUCKY TORNADO THAT OCCURRED NEAR THE COMMUNITY OF EDDYVILLE.

- * EVENT DATE - FRIDAY APRIL 11TH 2009
- * EVENT TIME - 1115 AM CDT /RADAR ADJUSTED/
- * EVENT TYPE - **EF1 TORNADO**
- * EVENT LOCATION - BEGAN 2 1/2 MILES NORTHEAST OF EDDYVILLE NEAR THE NORTH SIDE OF EXIT 4 ON THE WESTERN KENTUCKY PARKWAY...AND TRACKED TO THE NORTHEAST FOR A THIRD OF A MILE NEAR HIGHWAYS 1199 AND 3171.
- * PEAK WIND - 90 MPH
- * AVERAGE PATH WIDTH - 50 YARDS
- * PATH LENGTH - 1/3 MILE
- * INJURIES - ONE. MINOR INJURY OCCURED AS A RESULT OF A GLASS WINDOW BEING BLOWN OUT IN VICTIMS MOBILE HOME.
- * FATALITIES - NONE

* DISCUSSION/DAMAGE - ONE MOBILE HOME OVERTURNED. THE END WALL OF A COMMERCIAL BUILDING WAS BLOW OUT. SEVERAL TREES AND POWER LINES DOWNED ALONG THE PATH.



These are damage pictures from Lyon County from NWS damage survey team.





Calloway County, KY

PUBLIC INFORMATION STATEMENT
NATIONAL WEATHER SERVICE PADUCAH KY
355 PM CDT SAT APR 11 2009

...DAMAGE SURVEY RESULTS FOR CALLOWAY COUNTY KENTUCKY...

THE FOLLOWING IS A PRELIMINARY DAMAGE ASSESSMENT FOR DAMAGE THAT OCCURRED IN NORTHERN CALLOWAY COUNTY ON FRIDAY APRIL 10TH 2009. THE DAMAGE PATH INCLUDES A MICROBURST PATH AND WITHIN THAT PATH WAS INCLUDED A BRIEF EF0 TORNADO.

THE TORNADO PATH SURVEYED:

- * EVENT TIME - ESTIMATED 1116 AM CDT TO 1118 AM CDT
- * EVENT TYPE - **EF0 TORNADO**
- * EVENT LOCATION - BEGAN 3.5 MILES SOUTHWEST OF DEXTER AND LIFTED 3.25 MILES SOUTHWEST OF DEXTER. OR NEAR 2635 HIGHWAY 464 AND LIFTED NEAR 2392 HIGHWAY 464.
- * PEAK WIND - 85 MPH
- * AVERAGE PATH WIDTH - 75 YARDS
- * PATH LENGTH - ONE QUARTER OF A MILE
- * INJURIES - NONE
- * DAMAGE - SEVERAL HOMES WITH SHINGLES AND SIDING OFF AND SOME LIGHT STRUCTURAL DAMAGE. SEVERAL STORAGE BUILDINGS DESTROYED. DOZENS OF TREES UPROOTED OR BROKEN OFF.

DOWNBURST SURVEYED:

- * EVENT TIME - ESTIMATED 1115 AM CDT TO 1120 AM CDT
- * EVENT TYPE - **MICROBURST**
- * EVENT LOCATION - BEGAN 4 MILES SOUTHWEST OF DEXTER AND ENDED 2 MILES SOUTHWEST OF DEXTER. THE DAMAGE STARTED AT 2913 HIGHWAY 464 AND ENDED NEAR 531 HICKORY GROVE ROAD.
- * PEAK WIND - 70 MPH
- * AVERAGE WIDTH - 100 YARDS
- * PATH LENGTH - 2 MILES
- * INJURIES - NONE
- * DAMAGE - DOZENS OF HOUSES WITH SHINGLE AND MINOR SIDING DAMAGE. MOBILE HOME BLOWN OVER ON ITS SIDE. HALF A DOZEN BARNs WITH ROOF DAMAGE. THE EF0 TORNADO ALSO OCCURRED IN THE PATH OF THIS DOWNBURST.

--



The following is a list of reports received during the storms:

PRELIMINARY LOCAL STORM REPORT...SUMMARY
NATIONAL WEATHER SERVICE PADUCAH KY
242 PM CDT FRI APR 10 2009

..TIME...	...EVENT...	...CITY LOCATION...	...LAT.LON...
..DATE...MAG....	..COUNTY LOCATION..ST..	...SOURCE....
	..REMARKS..		
1111 PM 04/09/2009	TSTM WND GST M60.00 MPH	DONIPHAN RIPLEY	36.62N 90.82W MO EMERGENCY MNGR
	SEVERAL GUSTS MEASURED IN THE UPPER 50S		
1120 PM 04/09/2009	HAIL E0.75 INCH	5 S DONIPHAN RIPLEY	36.55N 90.82W MO EMERGENCY MNGR
	DIME SIZE HAIL COVERING THE GROUND.		
1120 PM 04/09/2009	HAIL E0.75 INCH	NEELYVILLE BUTLER	36.56N 90.51W MO TRAINED SPOTTER
	HAIL SPOTTED ON THE BUTLER/ RIPLEY COUNTY LINE NEAR THE ARKANSAS BORDER.		
1125 PM 04/09/2009	TSTM WND DMG	3 SW NEELYVILLE BUTLER	36.53N 90.55W MO TRAINED SPOTTER
	AWNING TORN OFF THE FRONT OF A HOUSE WITH SHINGLE DAMAGE TO A SHED.		
1141 PM 04/09/2009	TSTM WND GST M58.00 MPH	POPLAR BLUFF BUTLER	36.76N 90.41W MO ASOS
	SUSTAINED AT 40 MPH.		
1228 AM 04/10/2009	TSTM WND GST E60.00 MPH	CAPE GIRARDEAU CAPE GIRARDEAU	37.31N 89.55W MO EMERGENCY MNGR
	WINDS ESTIMATED 50 TO 60 MPH WITH HIGHER GUSTS.		
1228 AM 04/10/2009	HAIL E0.75 INCH	CAPE GIRARDEAU CAPE GIRARDEAU	37.31N 89.55W MO EMERGENCY MNGR
	HAIL IS REPORTED AS HEAVY BUT DIME SIZED.		
1235 AM 04/10/2009	TSTM WND DMG	CHARLESTON MISSISSIPPI	36.92N 89.34W MO EMERGENCY MNGR
	CAR WASH DESTROYED, GAS STATION CANOPY BLOWN DOWN.		
0100 AM 04/10/2009	TSTM WND DMG	2 E KEVIL MCCRACKEN	37.08N 88.85W KY TRAINED SPOTTER
	2 SHEDS DESTROYED NEAR RUDYS FARM CENTER NEAR BETHEL CHURCH ROAD.		
0100 AM 04/10/2009	TSTM WND DMG	2 E KEVIL MCCRACKEN	37.08N 88.85W KY TRAINED SPOTTER
	POWER POLE SNAPPED		
0100 AM	TSTM WND DMG	2 E KEVIL	37.08N 88.85W

04/10/2009 MCCRACKEN KY TRAINED SPOTTER

REPORTS OF 2 SHEDS DESTROYED AT RUDYS FARM CENTER NEAR
BETHEL CHURCH ROAD.

0102 AM TSTM WND DMG WOODVILLE 37.10N 88.87W
04/10/2009 MCCRACKEN KY TRAINED SPOTTER

SPRING BAYOU BAPTIST CHURCH ROOF BLOWN OFF. TIME OF
OCCURANCE ESTIMATED BY RADAR.

0111 AM TSTM WND GST PADUCAH 37.07N 88.64W
04/10/2009 M60.00 MPH MCCRACKEN KY ASOS

0118 AM TSTM WND DMG PADUCAH 37.07N 88.64W
04/10/2009 MCCRACKEN KY TRAINED SPOTTER

SHEDS IN LOWES PARKING LOT BLOWN ACROSS NEW HOLT ROAD.

0131 AM TSTM WND GST REIDLAND 37.01N 88.53W
04/10/2009 M56.00 MPH MCCRACKEN KY TRAINED SPOTTER

0250 AM HAIL HOPKINSVILLE 36.85N 87.49W
04/10/2009 M0.75 INCH CHRISTIAN KY TRAINED SPOTTER

PENNY SIZE HAIL REPORTED.

0948 AM HAIL 2 S MURRAY 36.58N 88.32W
04/10/2009 M0.75 INCH CALLOWAY KY TRAINED SPOTTER

DIME SIZE HAIL REPORTED JUST SOUTH OF TOWN.

1016 AM HAIL 3 W GRACEY 36.88N 87.68W
04/10/2009 M1.00 INCH TRIGG KY TRAINED SPOTTER

QUARTER SIZE HAIL REPORTED.

1023 AM HAIL MONTGOMERY 36.88N 87.74W
04/10/2009 M0.25 INCH TRIGG KY TRAINED SPOTTER

ENOUGH HAIL TO COVER THE GROUND.

1023 AM HAIL 2 E KEVIL 37.08N 88.85W
04/10/2009 M1.00 INCH MCCRACKEN KY TRAINED SPOTTER

QUARTER SIZE HAIL FALLING AT MCCRACKEN AND BALLARD COUNTY
LINE ON HIGHWAY 60.

1030 AM HAIL CADIZ 36.87N 87.82W
04/10/2009 M1.00 INCH TRIGG KY TRAINED SPOTTER

QUARTER SIZE HAIL REPORTED IN CADIZ AND MONTGOMERY.

1036 AM HAIL JOPPA 37.21N 88.84W
04/10/2009 M0.88 INCH MASSAC IL TRAINED SPOTTER

NICKLE SIZE HAIL REPORTED.

1037 AM HAIL METROPOLIS 37.15N 88.71W
04/10/2009 M1.00 INCH MASSAC IL NWS EMPLOYEE

QUARTER SIZE HAIL REPORTED. MOST OF THE HAIL IS PEA TO
NICKLE SIZE. MOST OF THE HAIL REPORTS ARE ON THE EAST

SIDE OF TOWN.

1045 AM TSTM WND DMG STURGIS 37.55N 87.99W
04/10/2009 UNION KY EMERGENCY MNGR

BACK SIDE OF HOME HAD ROOF BLOWN OFF. OTHER DAMAGE
REPORTED IN THE SURROUNDING AREA.

1050 AM HAIL DAWSON SPRINGS 37.17N 87.69W
04/10/2009 M0.75 INCH HOPKINS KY TRAINED SPOTTER

PENNY SIZE HAIL REPORTED AT DAWSON SPRINGS EXIT ON
INTERSTATE 24.

1104 AM HAIL SHARPE 36.97N 88.46W
04/10/2009 M1.00 INCH MARSHALL KY TRAINED SPOTTER

1110 AM HAIL 4 S CALVERT CITY 36.98N 88.35W
04/10/2009 M0.88 INCH MARSHALL KY TRAINED SPOTTER

NICKLE HAIL REPORTED ALONG INTERSTATE 24.

1111 AM HAIL LEDBETTER 37.05N 88.50W
04/10/2009 M0.88 INCH LIVINGSTON KY TRAINED SPOTTER

1115 AM TSTM WND DMG KIRKSEY 36.68N 88.43W
04/10/2009 CALLOWAY KY EMERGENCY MNGR

ONE UNINHABITED MOBILE HOME BLOWN OVER. A FEW TREES AND
POWER LINES DOWN. EVENT OCCURRED ALONG WEST FORK ROAD.

1120 AM HAIL CALVERT CITY 37.03N 88.35W
04/10/2009 M1.00 INCH MARSHALL KY BROADCAST MEDIA

QUARTER SIZE HAIL REPORTED THROUGHOUT THE COMMUNITY.

1135 AM HAIL GRAND RIVERS 37.01N 88.24W
04/10/2009 M0.88 INCH LIVINGSTON KY NWS EMPLOYEE

NICKLE SIZE HAIL REPORTED AT EXIT 31 ON INTERSTATE 24.

1154 AM TORNADO MANNINGTON 37.12N 87.49W
04/10/2009 CHRISTIAN KY EMERGENCY MNGR

*** 2 INJ *** CONFIRMED TORNADO BY TRAINED SPOTTER AND EM
OFFICE. ...UPDATE 1158AM...REPORTS OF INJURIES AT
MANNINGTON LOOP. EMERGENCY VEHICLES RESPONDING AT THIS
TIME. NUMBER OF INJURIES UNKNOWN. UPDATE...1230PM...2
CONFIRMED INJURIES. 2 HOMES DESTROYED AND A THIRD
POSSIBLY DESTROYED. PROPANE TANK EXPLOSION AND STILL ON
FIRE. DEGREE OF INJURIES UNKNOWN. REPORTS VERIFIED
THROUGH EM OFFICE AND 911 CENTER.

1155 AM HAIL BROOKPORT 37.12N 88.63W
04/10/2009 M1.00 INCH MASSAC IL TRAINED SPOTTER

1159 AM TSTM WND DMG 2 E EDDYVILLE 37.08N 88.04W
04/10/2009 LYON KY LAW ENFORCEMENT

...LATE REPORT...CONFIRMED BY STATE POLICE. MAJOR DAMAGE
OCCURRED NEAR INTERSECTION OF HIGHWAYS 1199 AND 3171.
REPORTS OF SEVERAL HOMES AND VEHICLES DAMAGED AND
DESTROYED. NUMEROUS DOWNED TREES AND POWER LINES. RESCUE

TEAMS, LAW AND UTILITY COMPANIES ARE AT THE SCENE.

1208 PM HAIL ISLAND 37.44N 87.15W
04/10/2009 M1.00 INCH MCLEAN KY TRAINED SPOTTER

...CORRECTED FOR TIME OF EVENT...

1240 PM TORNADO 2 SW CROFTON 37.03N 87.51W
04/10/2009 CHRISTIAN KY EMERGENCY MNGR

CONFIRMED TORNADO REPORTED THROUGH EM OFFICE.

1244 PM HAIL 2 SW CROFTON 37.03N 87.51W
04/10/2009 M2.00 INCH CHRISTIAN KY EMERGENCY MNGR

HEN EGG SIZE HAIL REPORTED NEAR RAIN-WRAPPED TORNADO.

0112 PM FUNNEL CLOUD WEIR 37.13N 87.22W
04/10/2009 MUHLENBERG KY TRAINED SPOTTER

0125 PM FUNNEL CLOUD UNION RIDGE 37.14N 87.00W
04/10/2009 MUHLENBERG KY TRAINED SPOTTER