

Gibson County, IN Macroburst

July 31, 2012

A complex of severe thunderstorms affected southwest Indiana and northwest Kentucky on Tuesday evening.

- The hardest hit area was in eastern Gibson County, where baseball to grapefruit-size hail reportedly injured people at a parade in Oakland City. Damaging winds from Oakland City to Mackey destroyed a barn, damaged roofs, and uprooted numerous trees. Roads were blocked by debris, including State Route 57.**
- The severe storms continued south across Warrick County, where golf-ball size hail and tree damage was reported from Chandler to Newburgh.**
- The severe storms continued south between Henderson and Owensboro, producing strong winds and hail.**

...DAMAGE SURVEY RESULTS FOR GIBSON COUNTY INDIANA MACROBURST...

THE FOLLOWING IS THE PRELIMINARY DAMAGE ASSESSMENT FOR THE OAKLAND CITY AREA IN GIBSON COUNTY.

* EVENT TYPE.....MACROBURST

* EVENT DATE.....TUESDAY JULY 31 2012

* EVENT TIME.....615 PM TO 630 PM CDT

* EVENT LOCATION.....OAKLAND CITY TO 3 MILES SOUTH OF BUCKSKIN

* PEAK WIND.....110 MPH

* AVG. PATH WIDTH....3.5 MILES

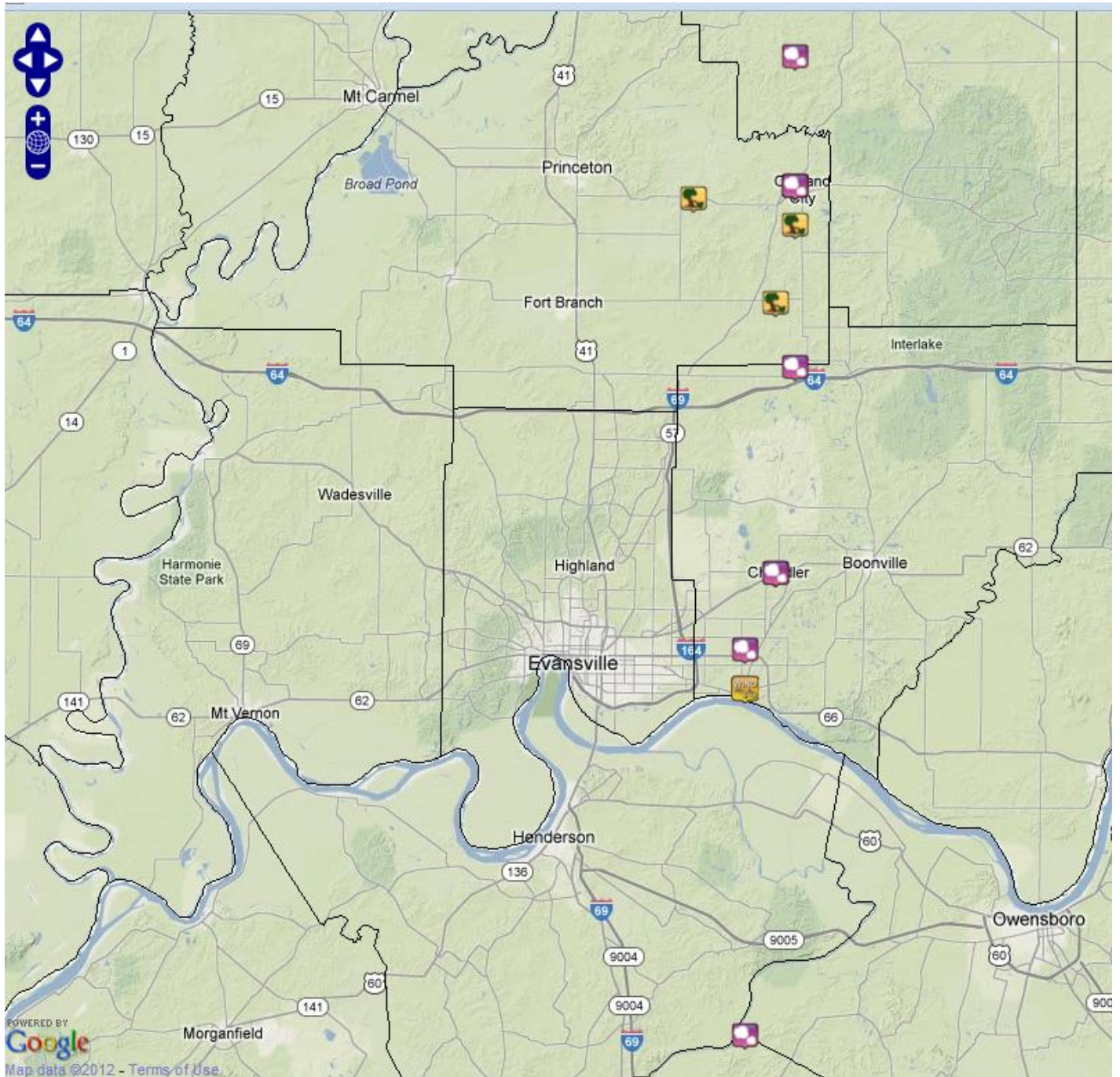
* PATH LENGTH.....12 MILES

* INJURIES.....4 TREATED...3 DUE TO HAIL AND 1 DUE TO WIND

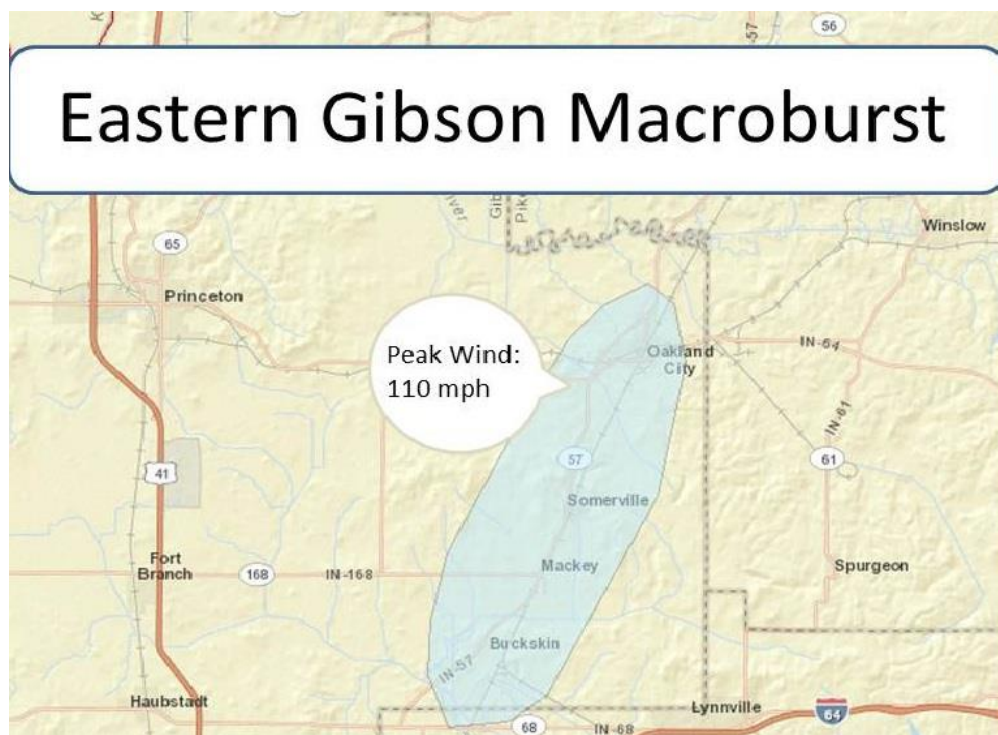
* FATALITIES.....0

* DAMAGE DETAIL.....THOUSANDS OF TREES SNAPPED OR UPROOTED. 78 HOMES/BUSINESSES WITH MAJOR DAMAGE...SUCH AS LOSS OF ROOF DECKING OR PORCHES. 249 WITH MINOR DAMAGE SUCH AS LOSS OF SHINGLES OR MINOR SIDING LOSS. DOZENS OF BARN/SHEDES HEAVILY DAMAGED OR DESTROYED. MAJOR HAIL DAMAGE TO MANY HOMES...PRIMARILY IN OAKLAND CITY. ALL 4 INJURIES OCCURRED IN OAKLAND CITY.

Map of damaging wind and large hail reports on July 31, 2012. The severe weather reports were just east of a line from Princeton, Indiana to Evansville, Indiana.



A more detailed image of the macroburst...



Damage pictures



Windows broken in an Oakland City Business



Machine shed destroyed in Oakland City



Grain bins destroyed in Somerville



Home damage in Oakland City

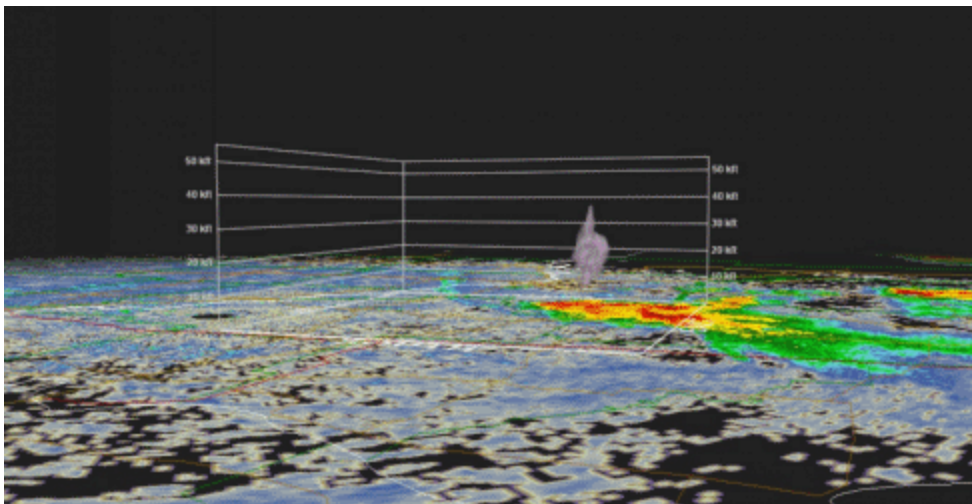


Hail damaged home in Oakland City



Home destroyed in Sommerville

Radar Image



This animation shows the 60 dBZ core between 604PM and 636PM in Gibson county. This is a very large core, as typically severe storms have 60 dBZ cores to about 25,000 ft this time of year. This one, as you can see stretched as high as 40,000 ft at times. This storm produced grapefruit size hail and 110 mph winds. Many structures were severely damaged or destroyed from the wind-driven hail.

PRELIMINARY LOCAL STORM REPORT...SUMMARY
 NATIONAL WEATHER SERVICE PADUCAH KY
 959 PM CDT TUE JUL 31 2012

..TIME...	...EVENT...	...CITY LOCATION...	...LAT.LON...
..DATE...MAG....	..COUNTY LOCATION..ST..	...SOURCE....
	..REMARKS..		
0612 PM 07/31/2012	HAIL E0.88 INCH	5 SW PETERSBURG PIKE	38.44N 87.35W IN TRAINED SPOTTER
	ALSO 1 INCH TREE LIMBS DOWN		
0620 PM 07/31/2012	TSTM WND DMG	FRANCISCO GIBSON	38.33N 87.45W IN BROADCAST MEDIA
	SIDING PEELED OFF A HOUSE.		
0624 PM 07/31/2012	TSTM WND DMG	OAKLAND CITY GIBSON	38.34N 87.35W IN LAW ENFORCEMENT
	TREE DOWN ON A TRAILER WITH RESIDENTS STILL INSIDE. SPOTTER ESTIMATED WINDS OVER 60 MPH.		
0624 PM 07/31/2012	HAIL E2.75 INCH	OAKLAND CITY GIBSON	38.34N 87.35W IN LAW ENFORCEMENT
	UNKNOWN NUMBER OF INJURIES AT A PARADE...REPORTED BY COUNTY 911		
0627 PM 07/31/2012	HAIL M1.75 INCH	OAKLAND CITY GIBSON	38.34N 87.35W IN TRAINED SPOTTER
0631 PM 07/31/2012	TSTM WND DMG	2 S OAKLAND CITY GIBSON	38.31N 87.35W IN TRAINED SPOTTER
	REPORTS OF TREE DAMAGE...SOME UPROOTED AND SOME SNAPPED. PARTOF A ROOF ON THE HIGHWAY...AND OTHER BUILDINGS WITH STRUCTURAL DAMAGE. THUNDERSTORMS WINDS ESTIMATED BETWEEN 70 AND 80 MPH.		
0640 PM 07/31/2012	TSTM WND DMG	1 E MACKEY GIBSON	38.25N 87.37W IN TRAINED SPOTTER
	LARGE BARN BLOWN DOWN...MULTIPLE TREES SNAPPED AND UPROOTED...DEBRIS BLOCKING ROADS...SHINGLES OFF HOUSES		
0647 PM 07/31/2012	HAIL E1.75 INCH	2 W LYNNVILLE WARRICK	38.20N 87.35W IN TRAINED SPOTTER
	3 TO 5 INCH TREE LIMBS DOWN		

0647 PM	HAIL	2 W LYNNVILLE		38.20N 87.35W
07/31/2012	E1.75 INCH	WARRICK	IN	TRAINED SPOTTER
		3 TO 5 INCH TREE LIMBS DOWN		
0658 PM	HAIL	CHANDLER		38.04N 87.37W
07/31/2012	E1.75 INCH	WARRICK	IN	BROADCAST MEDIA
0658 PM	HAIL	CHANDLER		38.04N 87.37W
07/31/2012	E1.50 INCH	WARRICK	IN	TRAINED SPOTTER
		TREE LIMBS DOWN WITH POWER OUT AT A FEW HOMES		
0702 PM	HAIL	NEWBURGH		37.95N 87.40W
07/31/2012	E0.88 INCH	WARRICK	IN	TRAINED SPOTTER
		TWO REPORTS OF NICKEL SIZE HAIL IN NEWBURGH		
0704 PM	HAIL	2 N NEWBURGH		37.98N 87.40W
07/31/2012	E1.75 INCH	WARRICK	IN	TRAINED SPOTTER
0706 PM	HAIL	NEWBURGH		37.95N 87.40W
07/31/2012	E1.75 INCH	WARRICK	IN	TRAINED SPOTTER
		QUARTER TO GOLFBALL SIZE HAIL		
0710 PM	HAIL	NEWBURGH		37.95N 87.40W
07/31/2012	E1.75 INCH	WARRICK	IN	TRAINED SPOTTER
		SPOTTER SAW SOME ROTATION/POSSIBLE FUNNEL CLOUD		
0710 PM	TSTM WND GST	NEWBURGH		37.95N 87.40W
07/31/2012	E65.00 MPH	WARRICK	IN	TRAINED SPOTTER
		SPOTTER REPORTED HEALTHY 10 INCH DIAMETER TREE BLOWN DOWN IN YARD.		
0846 PM	HAIL	DELAWARE		37.68N 87.40W
07/31/2012	E0.88 INCH	DAVISS	KY	TRAINED SPOTTER