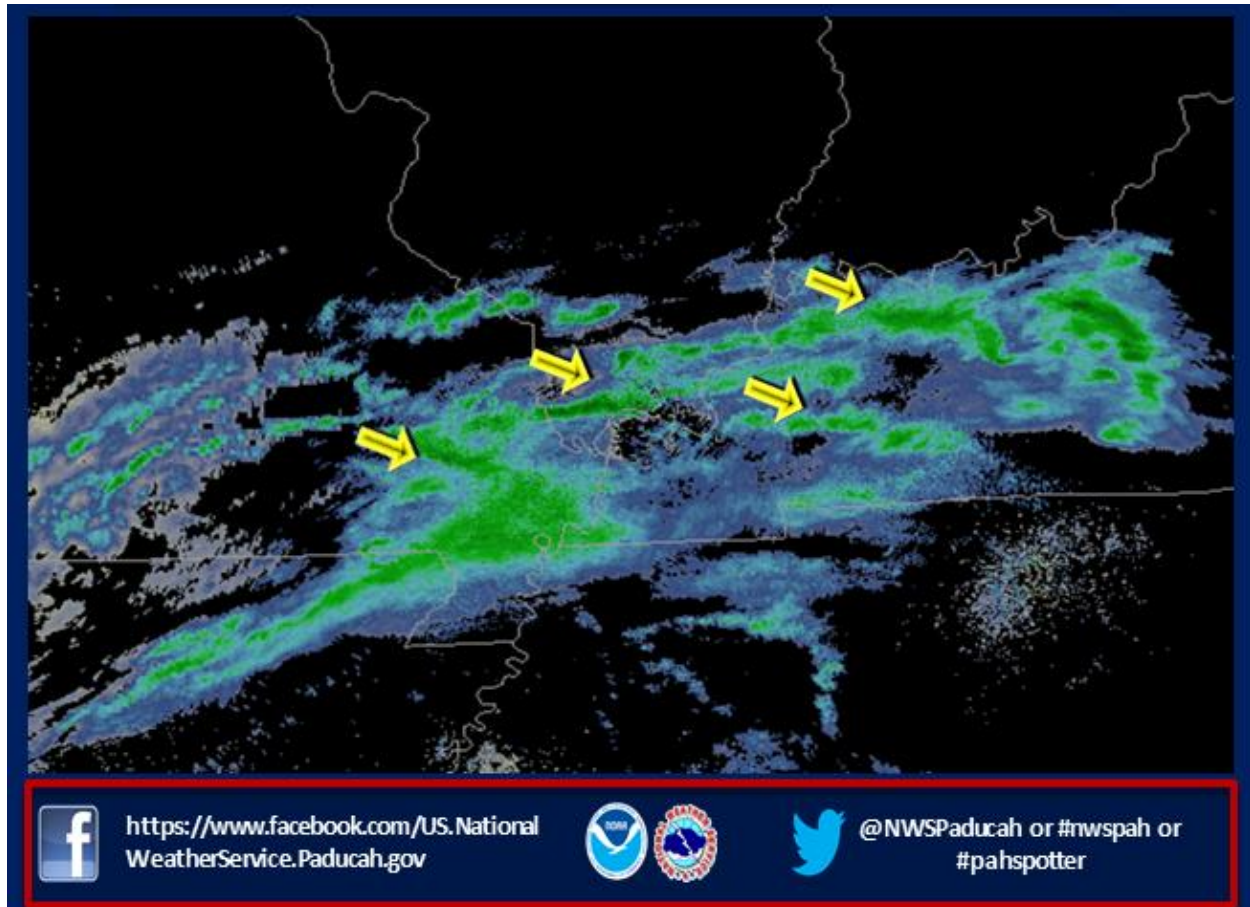


JAN. 15 SNOWFALL AMOUNTS: Across most of southeast Missouri, western Kentucky, and far southern Illinois, one to two inches of snow fell during the morning hours of Jan. 15. The snow fell in bands oriented from west to east. The heaviest band extended from Bardwell, KY (in Carlisle County) east across Benton (in Marshall County) to northern Christian County. The highest measured accumulation was 2 inches in Benton, KY and along Lake Barkley near the Trigg/Lyon County line.

Below is a radar image from early on the 15th, showing the banded nature of the snow. A particularly heavy snow band developed across southwest Kentucky after this radar image was generated.



IMPACTS: Despite the fairly low snow amounts, impacts were high. The high impacts were due to the timing during the early morning commute, as well as very cold pavement temperatures that allowed roads to quickly become snow-covered and slippery. Some schools were closed, and there was a rash of motor vehicle accidents. Some of the accidents were serious.

FATALITIES / INJURIES: A fatal collision occurred on the Natcher Parkway near the 68-mile marker in Daviess County, KY. A van lost control on the snow, crossed the median of the highway, and hit a pickup truck head-on. The driver of the pickup truck was killed. Two others were injured. A tractor-trailer rig jackknifed to avoid the collision, but the driver of the rig was not hurt. The parkway was closed for 4 to 5 hours. Dozens of accidents were reported in Marshall County, including two with injuries. A couple of people were injured in separate accidents near Paducah. One accident occurred on U.S. Highway 62 a

few miles west of Paducah, and the other was on a secondary road in southern McCracken County. In Mayfield, a head-on collision with injuries occurred on the Highway 121 bridge over the Purchase Parkway. One person was seriously injured, and another person received minor injuries. In Christian County, a woman was hurt in an accident on the Pennyryle Parkway. Her vehicle slid off the roadway and struck a tree. Two accidents with minor injuries were reported in Scott County, MO. One of these accidents occurred on U.S. Highway 61 near Morley, and the other was on Route A near Benton. A minor injury occurred in an accident on Highway 25 near Dexter in Stoddard County.

WEATHER MAP SYNOPSIS: The snow was associated with a compact but strong upper-level disturbance that moved east across southern Missouri.