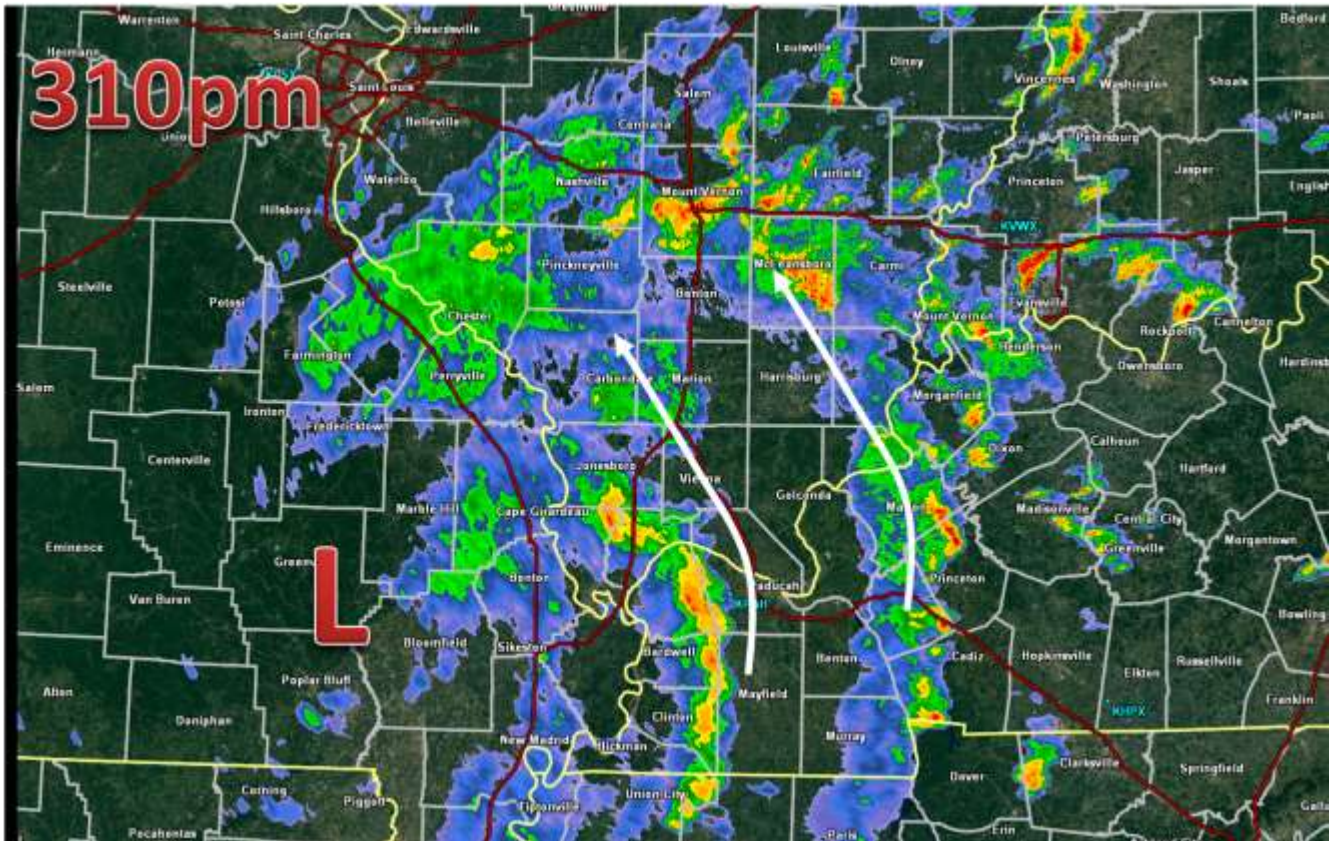


On the afternoon of June 19, 2015, remnants of Tropical Storm Bill moved over our region and spawned several tornadoes. Most of the tornadoes were fairly short lived but one had a bit longer of a track. Damage from the tornadoes was mainly to trees/crops, but unfortunately, there was significant damage to one home and a business. Tropical storms are known to often provide the necessary ingredients for tornadoes. As the tropical storm moves inland, the winds near the surface will weaken but winds aloft will decrease at a slower rate. Therefore, wind shear in the atmosphere can be strong enough to produce tornadoes, usually northeast of the center of the storm.

A lot of times, tornadoes associated with tropical systems will be weak, to sometimes strong (EF2 in strength or weaker), but short lived. In addition, the rotational signatures seen on radar can be extremely weak, making it difficult for forecasters to issue warnings in time.

Here is a glimpse of the radar on June 19, 2015, right before the first tornado occurred, showing the spiral bands rotating around the remnants of Bill.



**PRELIMINARY Damage Surveys**

**. TORNADO 1 . . .**

RATING:	EF-1
ESTIMATED PEAK WIND:	90 MPH
PATH LENGTH /STATUTE/:	0.50 MILE
PATH WIDTH /MAXIMUM/:	50 YARDS
FATALITIES:	0
INJURIES:	0

START TIME: 357 PM CDT  
START LOCATION: 2 MILES SOUTHEAST OF GOREVILLE IL...  
JOHNSON COUNTY

END TIME: 358 PM CDT  
END LOCATION: 1.7 MILES SOUTHEAST OF GOREVILLE IL...  
JOHNSON COUNTY

SURVEY SUMMARY: APPROXIMATELY A HALF MILE WEST OF INTERSTATE  
24 NEAR EXIT 7. BRIEF TOUCHDOWN.  
SEVERAL TREES AND LIMBS DOWN.

**.TORNADO 2...**

RATING: EF-1  
ESTIMATED PEAK WIND: 95 MPH  
PATH LENGTH /STATUTE/: 0.25 MILE  
PATH WIDTH /MAXIMUM/: 70 YARDS  
FATALITIES: 0  
INJURIES: 0

START TIME: 453 PM CDT  
START LOCATION: 1 MILE EAST OF MURPHYSBORO IL...  
JACKSON COUNTY

END TIME: 454 PM CDT  
END LOCATION: 0.75 MILE EAST-NORTHEAST OF MURPHYSBORO IL  
...JACKSON COUNTY

SURVEY SUMMARY: OCCURRED ON THE EASTERN OUTSKIRTS OF  
MURPHYSBORO ALONG AND EAST OF THE BIG MUDDY  
RIVER JUST NORTH OF ILLINOIS ROUTE 13.  
LARGE SECTION OF ROOF INCLUDING RAFTERS  
OF A COMMERCIAL WOODEN BUILDING BLOWN UP TO  
300 YARDS. PONTOON FLIPPED OVER. SECOND  
PONTOON LOFTED ABOUT 200 YARDS. TWO WOODEN  
POWER POLES SNAPPED. SEVERAL TREE LIMBS AND ONE  
TREE DOWN. EYEWITNESS HAD VIDEO OF TORNADO.



**.TORNADO #3...**

RATING: EF-1

ESTIMATED PEAK WIND: 110 MPH

PATH LENGTH /STATUTE/: .75 MILES

PATH WIDTH /MAXIMUM/: 150 YARDS

FATALITIES: 0

INJURIES: 0

START TIME: 4:51 PM CDT

START LOCATION: 2SW WEST FRANKFORT IL (FRANKLIN COUNTY)

END TIME: 4:53 PM CDT

END LOCATION: 2.5 MILES WSW WEST FRANKFORT IL (FRANKLIN COUNTY)

DAMAGE: A LARGE TWO STORY HOUSE SUSTAINED MAJOR DAMAGE LOSING LARGE PORTIONS OF ITS ROOF AND THE FRONT PORCH. A SMALL STORAGE SHED AND FENCING WAS ALSO DAMAGED. NEAR THE BEGINNING OF THE DAMAGE PATH A GARAGE LOST MOST OF ITS ROOF. DOZENS OF TREES AND TREE LIMBS WERE BROKEN OR UPROOTED. AT LEAST ONE EYEWITNESS SAW THE TORNADO WHICH BEGAN ALONG DAVIS STREET AND THEN MOVED NORTHWEST BEFORE ENDING ON THE WEST SIDE OF CR-6 NEAR THE GREEN RIVER.







**.TORNADO #4...**

RATING: EF-0

ESTIMATED PEAK WIND: 75 MPH

PATH LENGTH /STATUTE/: 0.35 MILES

PATH WIDTH /MAXIMUM/: 50 YARDS

FATALITIES: 0

INJURIES: 0

START TIME: 5:24 PM CDT

START LOCATION: 1.75 MILES EAST OF MACEDONIA IL (HAMILTON COUNTY)

END TIME: 5:25 PM CDT

END LOCATION: 1.5 MILES EAST NORTHEAST OF MACEDONIA IL

DAMAGE: SEVERAL TREE LIMBS BROKEN. CORN STALKS FLATTENED.



**.TORNADO #5...**

RATING: EF-0  
ESTIMATED PEAK WIND: 85 MPH  
PATH LENGTH /STATUTE/: 4.5 MILES  
PATH WIDTH /MAXIMUM/: 200 YARDS  
FATALITIES: 0  
INJURIES: 0

START TIME: 3:13 PM CDT  
START LOCATION: 2.5 MILES WEST OF NORRIS CITY IL (WHITE COUNTY)

END TIME: 3:30 PM CDT  
END LOCATION: 3.5 MILES SSW OF ENFIELD IL

DAMAGE: CORN BLOWN IN SEVERAL FIELDS. SEVERAL LARGE LIMBS BROKEN.  
SMALL SHED BLOWN OVER. SMALL SECTION OF VINYL FENCE BROKEN. TREE UPROOTED.



**.TORNADO 6...**

RATING: EF-0  
ESTIMATED PEAK WIND: 75 MPH  
PATH LENGTH /STATUTE/: 1.75 MILES  
PATH WIDTH /MAXIMUM/: 75 YARDS  
FATALITIES: 0  
INJURIES: 0

START TIME: 130 PM CDT  
START LOCATION: 1 MILE NORTHEAST OF FARMINGTON KENTUCKY

END TIME: 136 PM CDT  
END LOCATION: 2.75 MILES NORTHEAST OF FARMINGTON KENTUCKY

SURVEY SUMMARY: SEVERAL TREES AND TREE LIMBS BLOWN DOWN. A WHEAT FIELD HAD A SWATH OF WHEAT BLOWN DOWN.