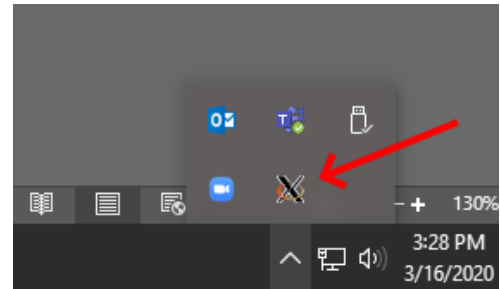


Linux GUI through SSH

For Windows, off campus.

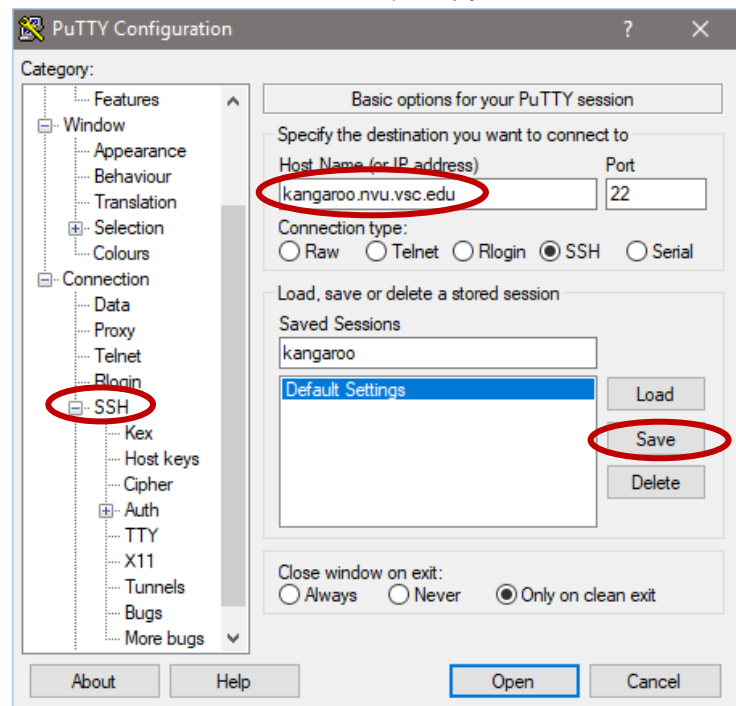
1. Download Xming from:
<https://downloads.sourceforge.net/project/xming/Xming/6.9.0.31/Xming-6-9-0-31-setup.exe>
2. Right click on the downloaded file, and select Run As Administrator. Enter the administrator username and password for the computer you're on.
3. Follow the prompts in the installer, clicking Next. Leave Full Installation selected.

4. When Xming has installed, leave the Launch Xming checkbox checked, and click Finish.
5. You'll know that Xming is running if you click on the little arrow next to the clock, and see a black X icon there.



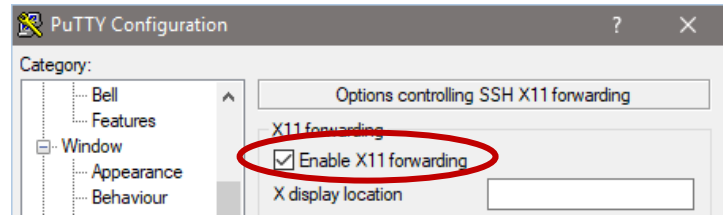
6. Download and install Xming-fonts from:
<https://sourceforge.net/projects/xming/files/Xming-fonts/7.7.0.10/Xming-fonts-7-7-0-10-setup.exe> The default settings are okay when installing Xming-fonts.
7. Download PuTTY from: <http://the.earth.li/~sgtatham/putty/latest/x86/putty.exe> If you've saved it to your Downloads folder (the default for most browsers), copy the file to the Desktop so you can easily find it again.

8. Double click on PuTTY.exe
9. On the window that opens, in the Host Name box, type in: **kangaroo.nvu.vsc.edu**
10. In the box under **Saved Sessions**, type in **kangaroo** and then click the **Save** button to the right.
11. Click on the **kangaroo** saved session that you just created, then click the **Load** button.



12. On the left side of the window, click on the little **+** next to SSH. Then, click on **X11**

13. Check the checkbox next to **Enable X11 Forwarding**.



14. Click **Open** at the bottom of the window.

15. You may get a prompt about “The server’s host key is not cached in the registry” Click the **Yes** button on this window.

16. At the **login as:** prompt, login with your Linux username. Then login with your password (it will look like you aren’t typing your password, but you are). Then press the Enter key.

17. To login to a computer in the WX Center, ASAC 315, or the Research Room, it must first be booted into Linux. Then, you will need to know the computer name, for example: L-DL-ASAC30301 Type the following into the command line: **ssh -X username@computername** where the username is your Linux username, and the computername is the computer’s name. Note that all commands in Linux are case sensitive. There is a single dash and a capital X in the command, above.

18. If prompted to “continue connecting?”, type **yes** and press Enter. Type in your Linux password when prompted.

19. From here, you should be able to type any commands into the command line as you would in the Terminal on Linux, and view the graphical user interface (GUI) just like you would if you were physically at the computer you’re logged into.

Questions? Trouble?

Please contact Jason Kaiser:

jason.kaiser@northernvermont.edu