

Radiofax Frequencies

OPC Products:

Atlantic:

4235, 6340.5, 9110, 12750 kHz
Schedule transmitted at: 0243/1405Z

Pacific:

4346, 8682, 12786, 17151.2, 22527, 12750 kHz
Schedule transmitted at: 1124/2324Z

Gulf of Alaska:

2054, 4298, 8459, 12412.5 kHz
Schedule transmitted at: 0527/1727Z

Other NWS Marine Forecast Office Products:

Gulf of Mexico:

4317.9, 8503.9, 12789.9, 17146.4 kHz
Schedule transmitted at: 2025Z

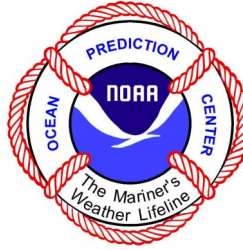
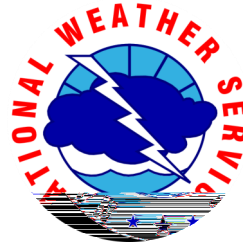
Hawaii:

9982.5, 11090, 16135 kHz
Schedule transmitted at: 1300/0100Z



NOAA Ship *Miller Freeman* in heavy seas.

Over 150 forecast products are issued daily at OPC to ensure the safety of life and property at sea. Although the majority of OPC's customers are trans-oceanic commercial vessels, fishing vessels and recreational boaters rely heavily on OPC's forecasts for their daily operations and decision making.



CONTACT INFORMATION:

AJ Reiss, Director, Ocean Prediction Center
aj.reiss@noaa.gov

National Oceanic and Atmospheric Administration
NWS/National Centers for Environmental Prediction
Ocean Prediction Center, NCWCP, W/NP41
5830 University Research Court
College Park, MD 20740-3818

(301) 683-1520
<https://ocean.weather.gov>



facebook.com/
NWSOPC



youtube.com/
NWSOPC



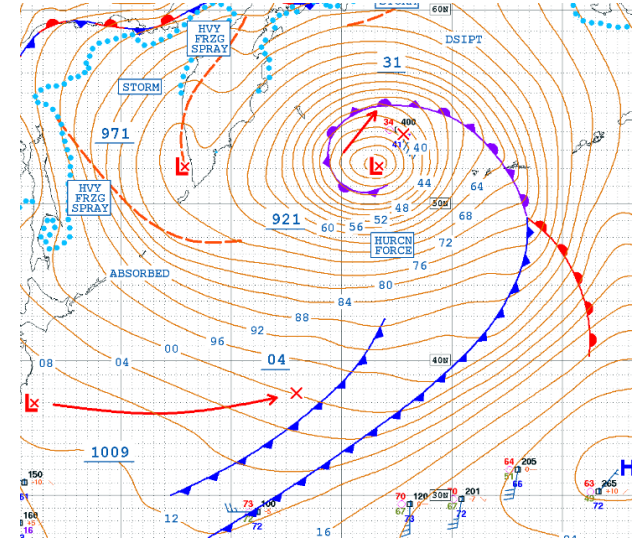
@nwsopc



Ocean Prediction Center



AN INTRODUCTION TO OPC PRODUCTS



December 31, 2020, a 921 mb hurricane force low pressure system churns across the Pacific and into the Bering Sea

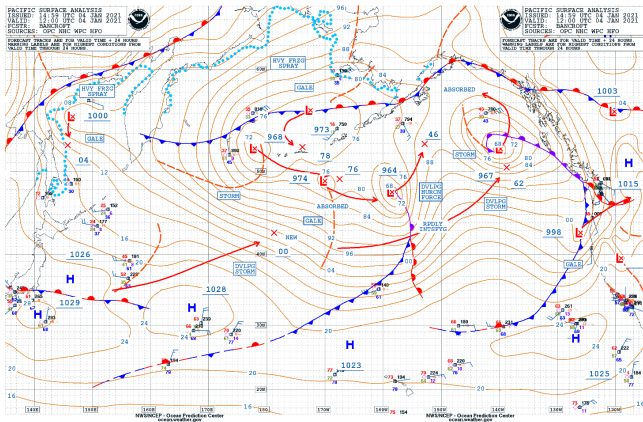
<https://ocean.weather.gov>

www.weather.gov

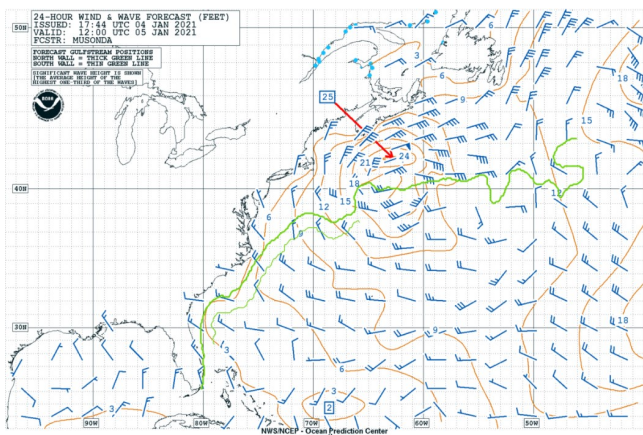
Products and Services

Atlantic and Pacific Graphical Products

- Surface analysis and forecasts to 120 hours
- Significant wave height analysis every 6 hours and forecasts to 96 hours
- Upper air (500mb) analysis and forecasts to 96 hours
- Wave period forecasts to 96 hours



Full Basin North Pacific Surface Analysis



West Atlantic 24-hour Wind / Wave Forecast



OPC's offshore zones are shown in yellow, high seas zones in green.

Text Products

OFFSHORE ZONES

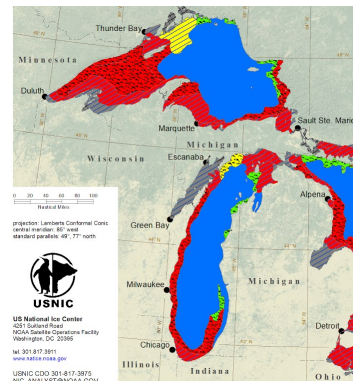
- Extend to 250 nautical miles from coast
- NAVTEX forecasts issued for coastal and offshore waters extend 200 nm from the coast
- Issued 4 times daily, forecasts to 5 days
- Includes warnings, winds, waves, visibility, precipitation, frzg spray

HIGH SEAS (METAREAS XII & IV)

- Atlantic: north of 31N, west of 35W
- Pacific: north of 30N, east of 160E
- Issued 4 times daily, forecasts to 48 hours
- Includes warnings, winds, waves, visibility, freezing spray

NWS Sea Ice Products

- Daily global Marginal Ice Zone maps and data
- Mon, Wed, Fri 5-day sea ice forecast for Alaskan waters
- Daily ice extent and type analyses in text, graphical, and data formats for the Great Lakes and Chesapeake and Delaware Bays



USNIC Great Lakes ice concentration (tenths) and level ice thickness (inches)

Warning Definitions

SUSTAINED SURFACE WIND SPEEDS

GALE: 34-47 knots



STORM: 48-63 knots



HURRICANE FORCE: ≥ 64 knots



HEAVY FREEZING SPRAY: Accumulation of vessel icing in excess of 2 cm / hour



ASHFALL ADVISORY: Significant impact expected from $< 1/4$ " (approx. 6 mm) of ashfall

Dense Fog: Visibility < 1 nm

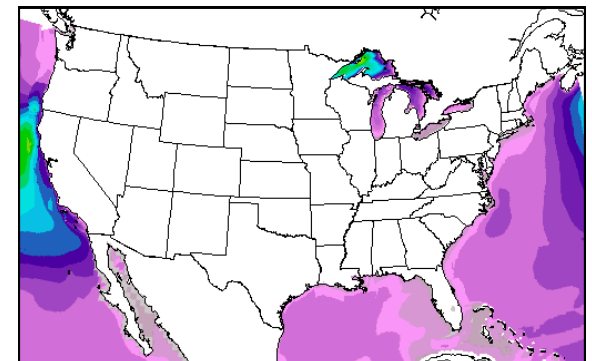


Gridded Products

OPC's gridded marine forecasts are now available in the National Digital Forecast Database (NDFD). The gridded marine parameters include:

- Surface wind speed and direction
- Surface wind gusts
- Significant wave height
- Marine hazards

https://ocean.weather.gov/digital_forecasts.php



Gridded wind forecast available for OPC's offshore zones.