



South American Desk

Speaker

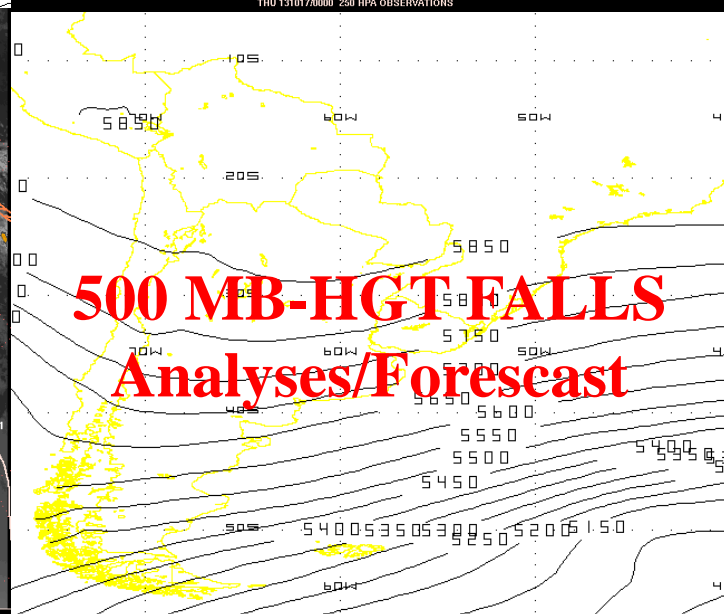
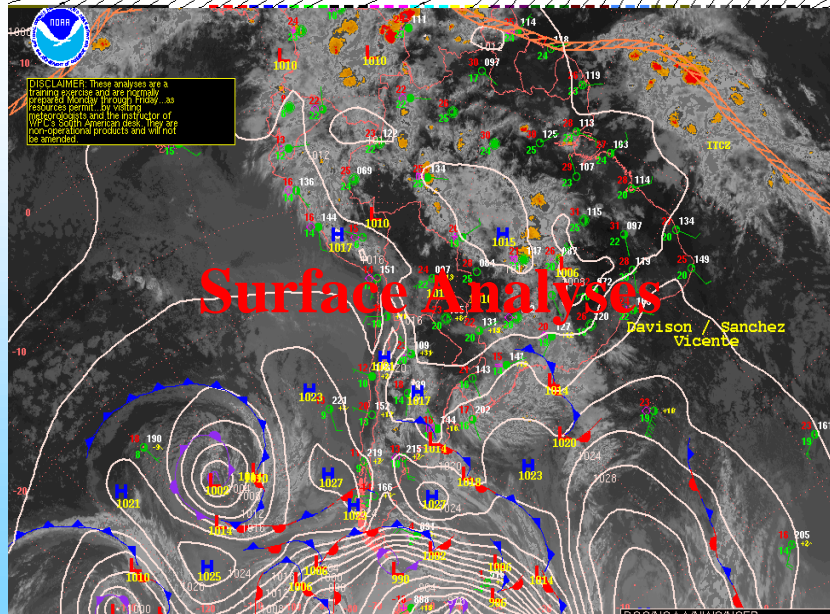
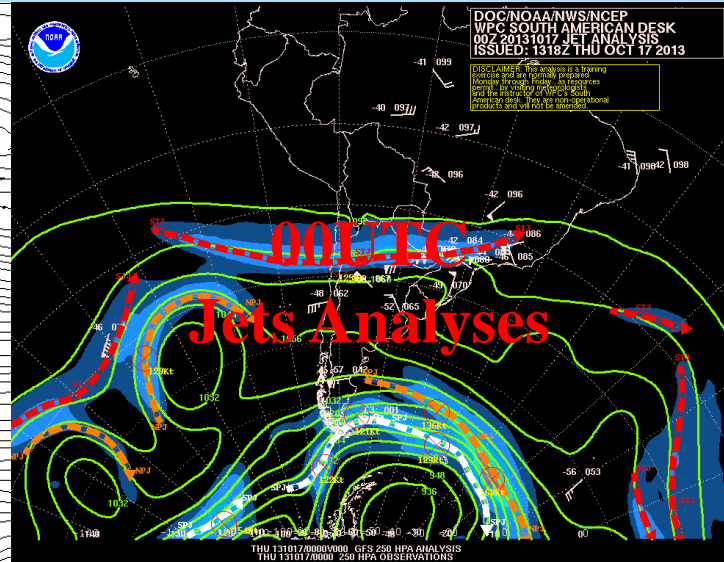
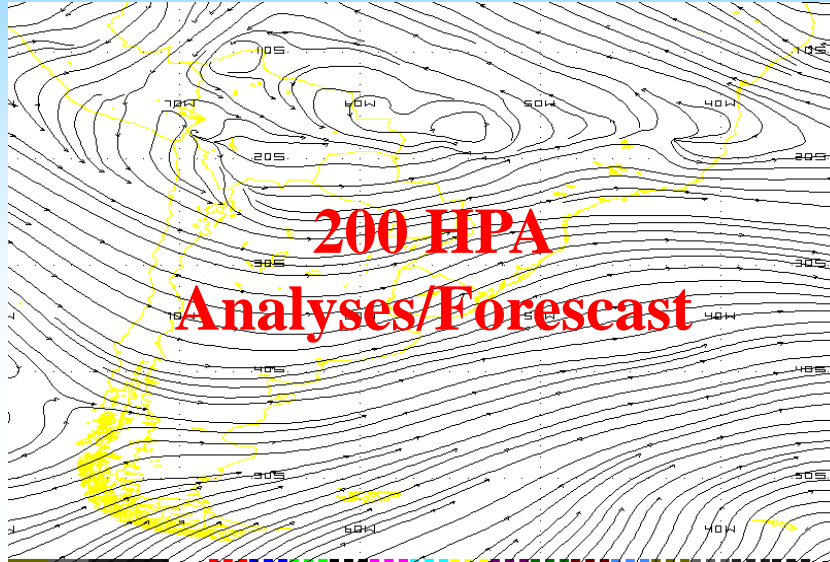
Valeria Vicente

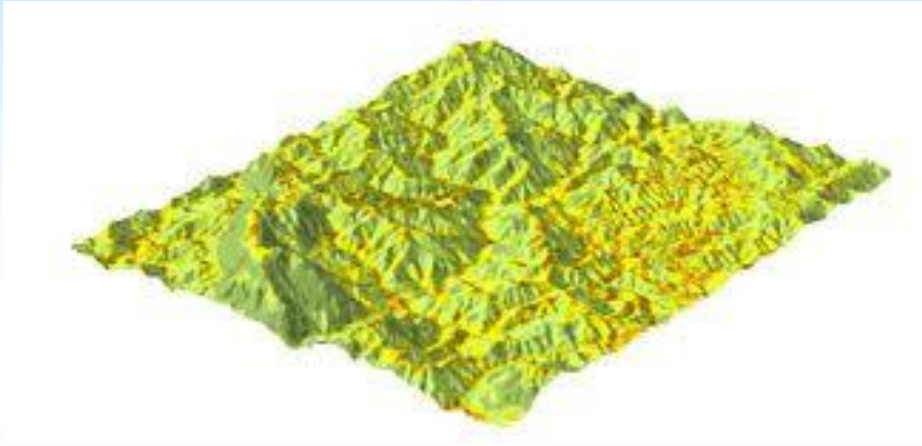
Instructors

Michel Davison

Jose Galvez

Forecast 08/09 Dec 2013





OROGRAPHY

EVOLUTION
IN THE TIME





National Weather Service

Weather Prediction Center

Site Map

News

Organization

DOC NOAA MWS

NCEP Centers: AWC CPC EMC NCO NHC OPC SPC SWPC WPC

South American Forecast Discussion

(Latest Discussion - Issued 1658Z Dec 06, 2013)

SPLIT FLOW PERSIST AT MID-LEVELS OVER THE EASTERN PACIFIC AS A SHORT WAVE UPPER TROUGH IS SLOWLY PROGRESSING EASTWARD INTO NORTHERN/CENTRAL CHILE. THE TROUGH WILL START CROSSING THE ANDES ON DAY 02 AND ESPECIALLY DURING DAY 03. THE TROUGH WILL FIRST

ENHANCE ACTIVITY ACROSS THE ANDES OF CENTRAL CHILE TO PRODUCE ACCUMULATIONS OF 05-10MM/DAY ON DAY 03. IN ARGENTINA...CYCLONIC VORTICITY ADVECTION AND HEIGHT FALLS AHEAD OF THE TROUGH WILL ENHANCE CONVECTION ALONG A STATIONARY FRONT AND THEN PRODUCE CYCLOGENESIS IN CENTRAL ARGENTINA. NEWLY FORMED EXTRATROPICAL CYCLONE AND ASSOCIATED FRONTS WILL RAPIDLY MOVE EASTWARD FROM CORDOBA/SANTA FE ON DAY 03 TO 33S 43W ON DAY 04. COLD FRONT WILL BE ACCOMPANIED BY A PRE-FRONTAL SQUALL LINE. INITIALLY EXPECTING AMOUNTS OF 15-30MM/DAY TO DEVELOP IN CUYO ON DAY 02. AMOUNTS ARE TO RAPIDLY INCREASE ON DAY 03 WITH MAXIMA OF 40-80MM/DAY AND THE RISK OF SEVERE WEATHER FROM CORDOBA/SANTIAGO DEL ESTERO INTO THE RIO DE LA PLATA/URUGUAY/WESTERN RIO GRANDE DO SUL WITH SQUALL LINE. MODERATE ACCUMULATIONS ARE ALSO EXPECTED WITH THE FRONT FROM LA PAMPA/SAN LUIS INTO THE BUENOS AIRES PROVINCE REACHING MAXIMA OF 20-45MM/DAY IN SEVERE CONVECTION AS WELL. ON DAY 04 EXPECTING AMOUNTS OF 25-50MM/DAY TO DEVELOP BETWEEN CENTRAL PARAGUAY INTO RIO GRANDE DO SUL/SANTA CATARINA/WESTERN PARANA IN BRASIL...WITH A RISK FOR SEVERE CONVECTION. HIGHER AMOUNTS ARE EXPECTED TO THE WEST AS SOUTHERLY LOW-LEVEL JET DEVELOPS AND ENHANCED MOISTURE CONVERGENCE ACROSS SOUTHEASTERN BOLIVIA INTO THE CHACO PARAGUAYO EXPECTING MAXIMA INCREASING TO 40-80MM/DAY WITH THE RISK OF MCS FORMATION. ON DAY 05 EXPECTING PRECIPITATION ALONG AND AHEAD OF FRONT TO PRODUCE MAXIMA OF 40-80MM/DAY IN SOUTHEASTERN BRASIL. FURTHER INLAND ALONG BOLIVIA AND SOUTHERN PERU EXPECTING MAXIMA OF 20-45MM.

Search WPC

Go

WPC Home

South American Desk

Synopsis

Model Discussion

English

Español

Training Materials

Charts

Tropical Desk

Caribbean Bulletin

Station Climatic

Summary

Other Sites

Charts

Model Guidance

Staff and Visitors

International Desk

Background

Links

Contact Us

About Our Site

About Our

Products

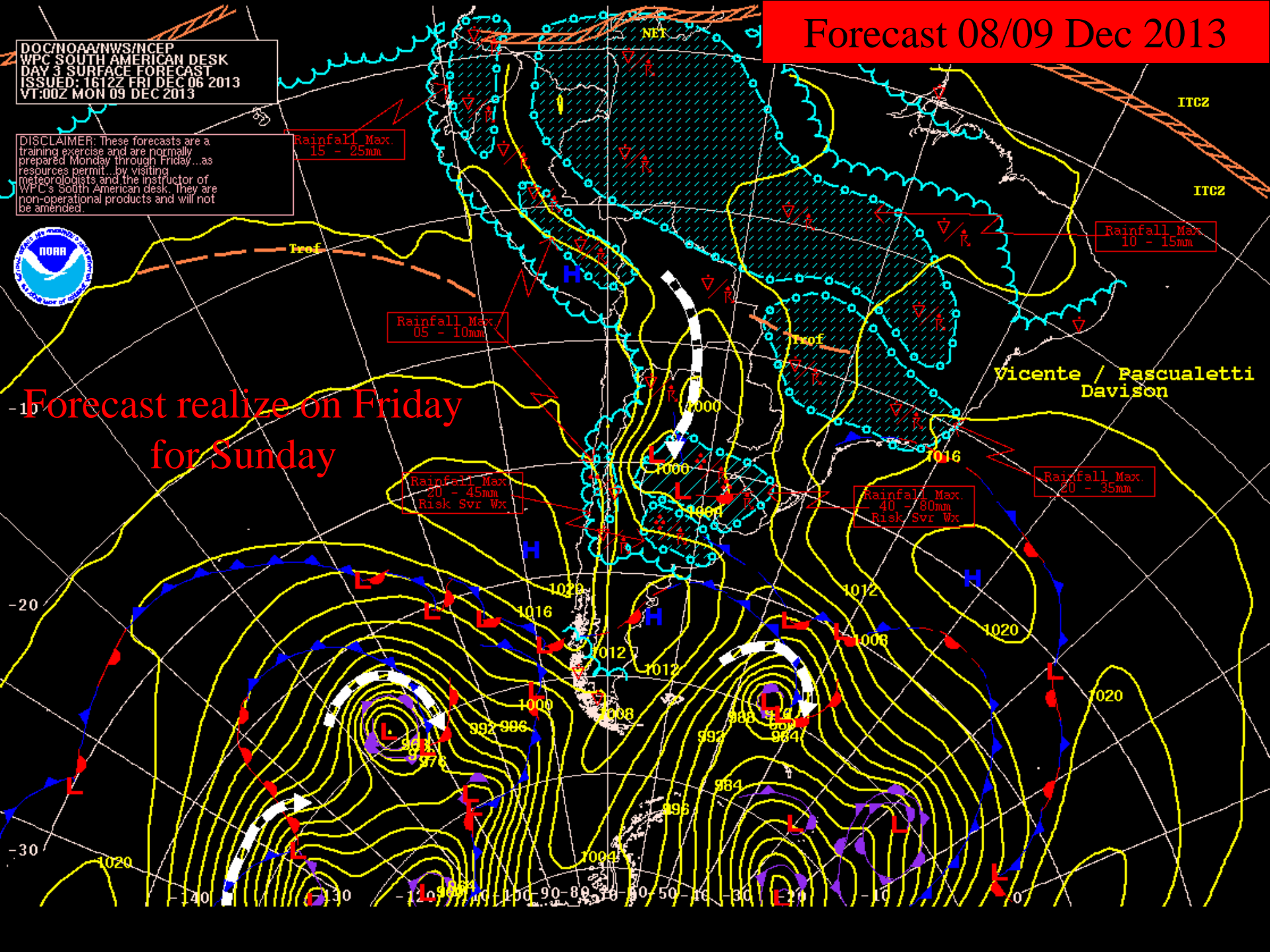


DOC/NOAA/NWS/NCEP
WPC SOUTH AMERICAN DESK
DAY 3 SURFACE FORECAST
ISSUED: 1612Z FRI DEC 06 2013
VT:00Z MON 09 DEC 2013

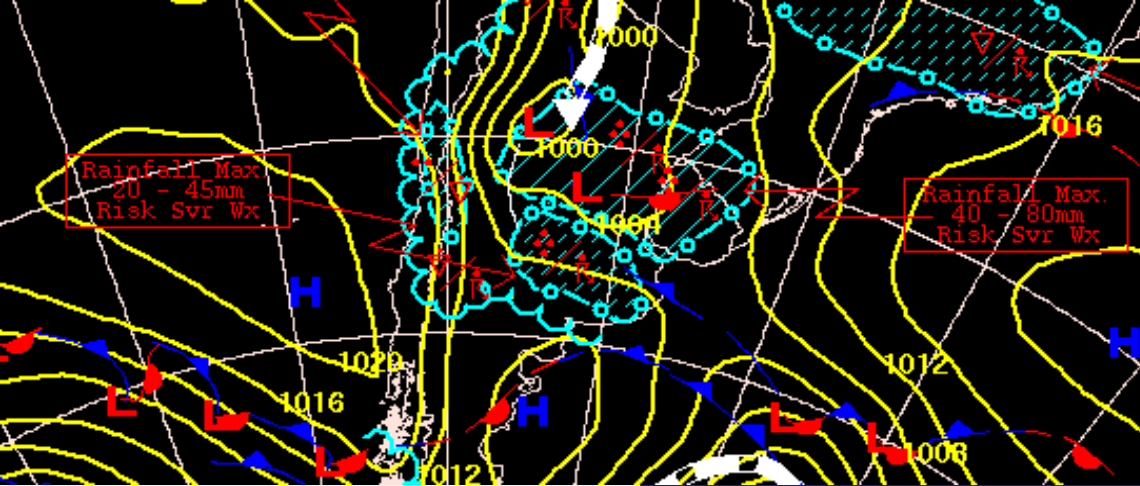
DISCLAIMER: These forecasts are a training exercise and are normally prepared Monday through Friday...as resources permit...by visiting meteorologists and the instructor of WPC's South American desk. They are non-operational products and will not be amended.

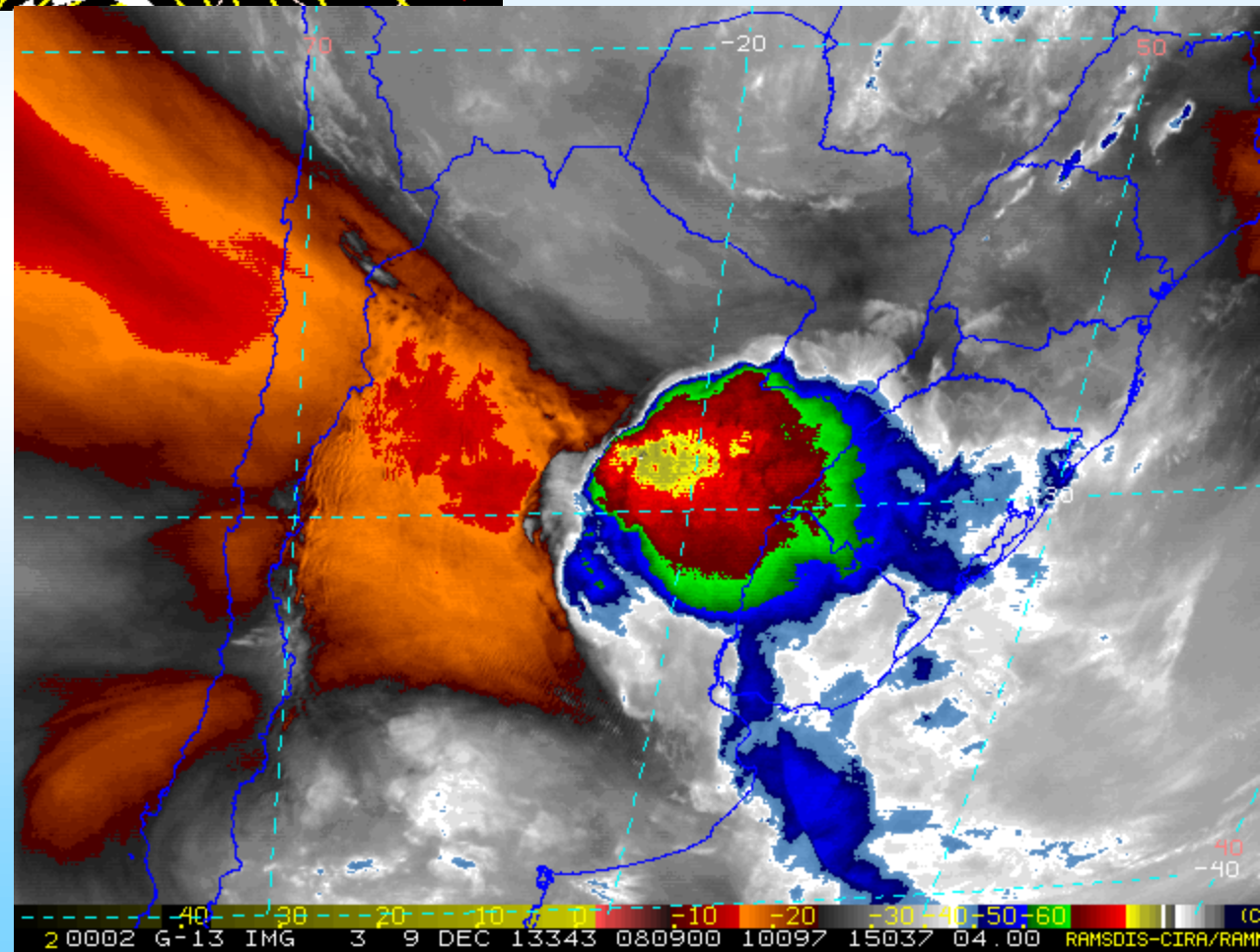
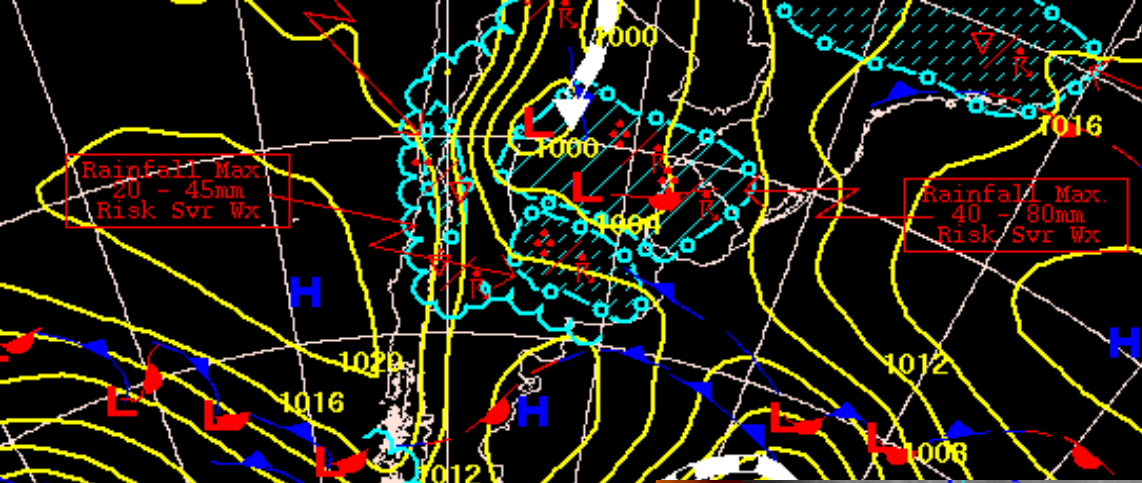


Forecast realize on Friday for Sunday

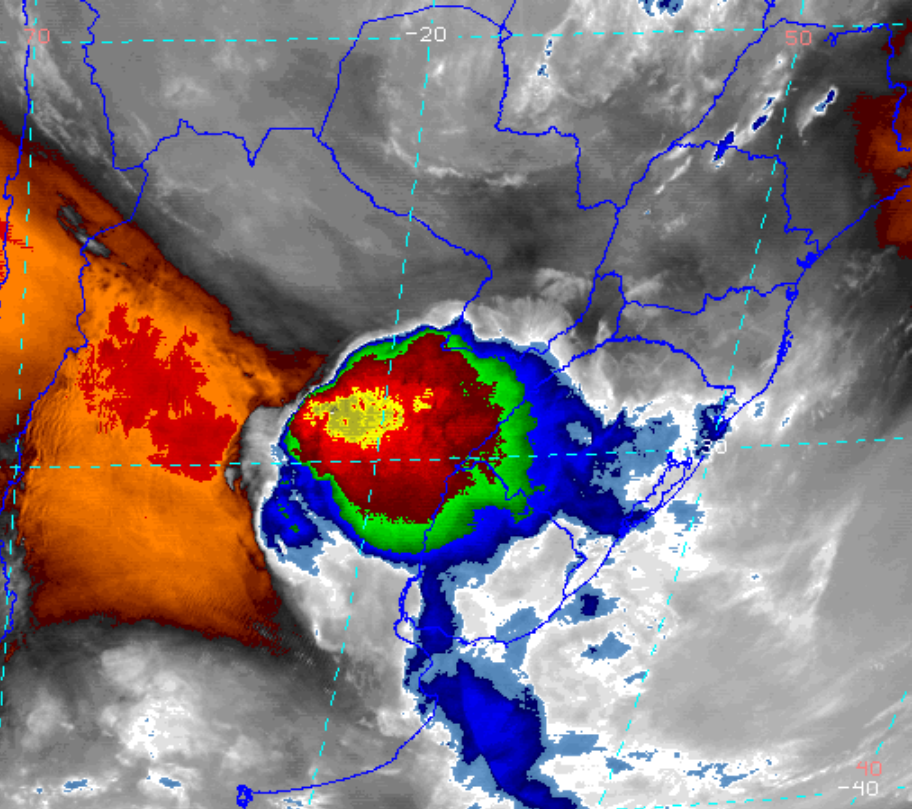


Forecast 08/09 Dec 2013

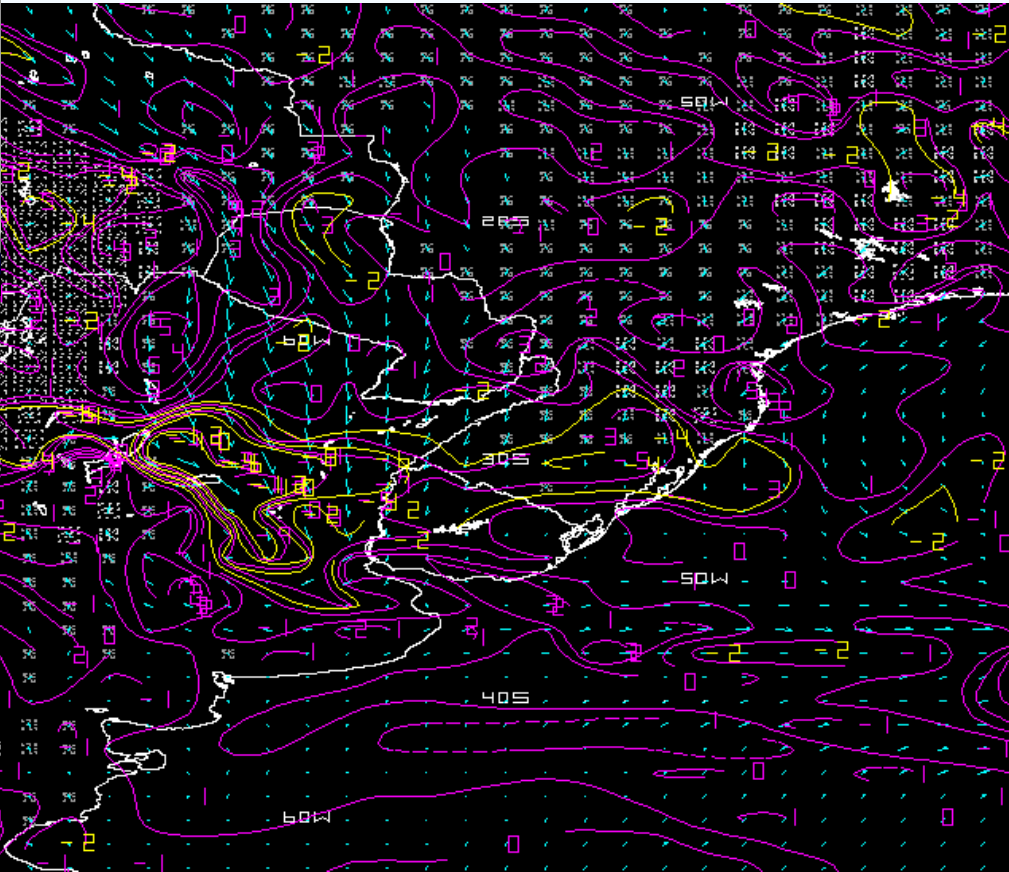




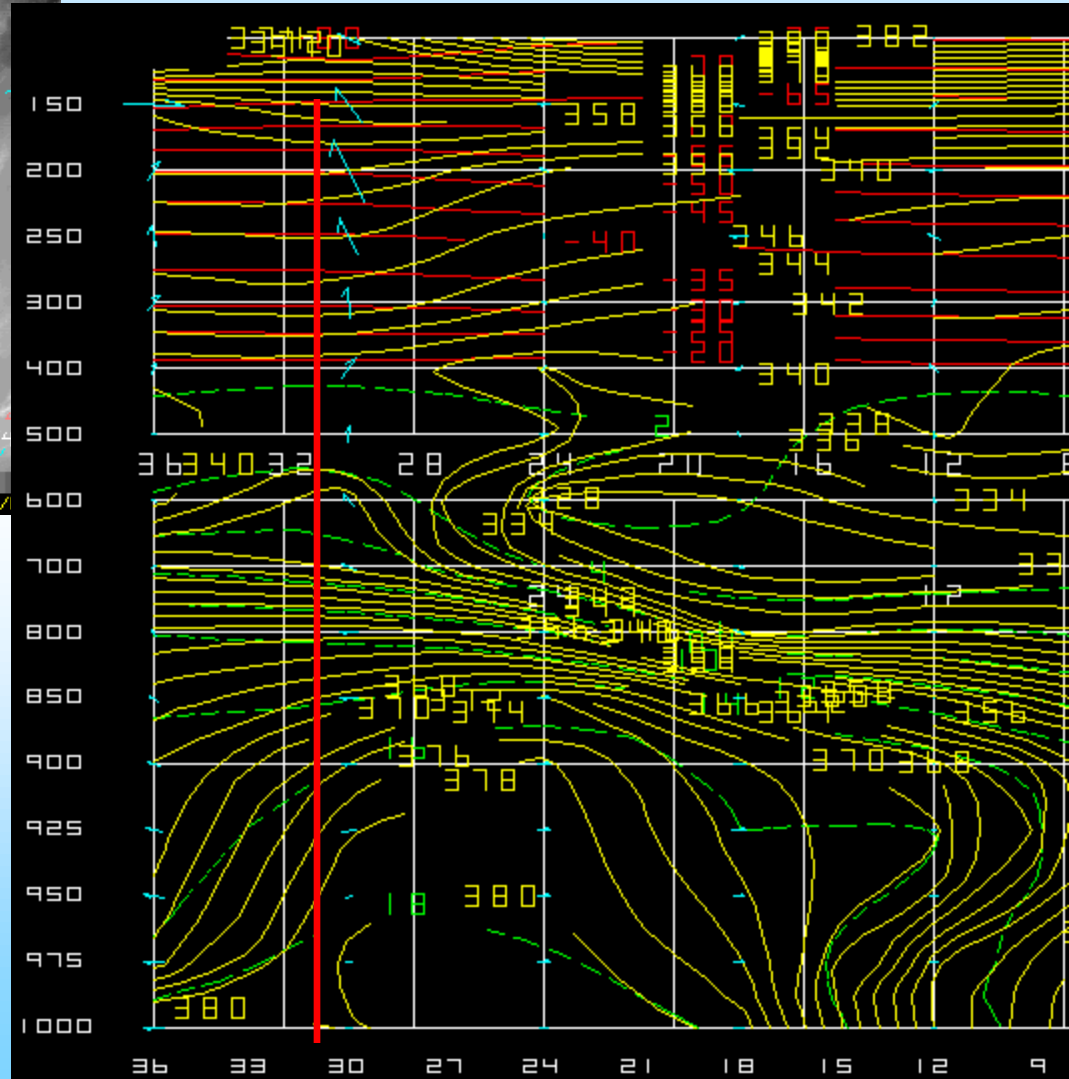
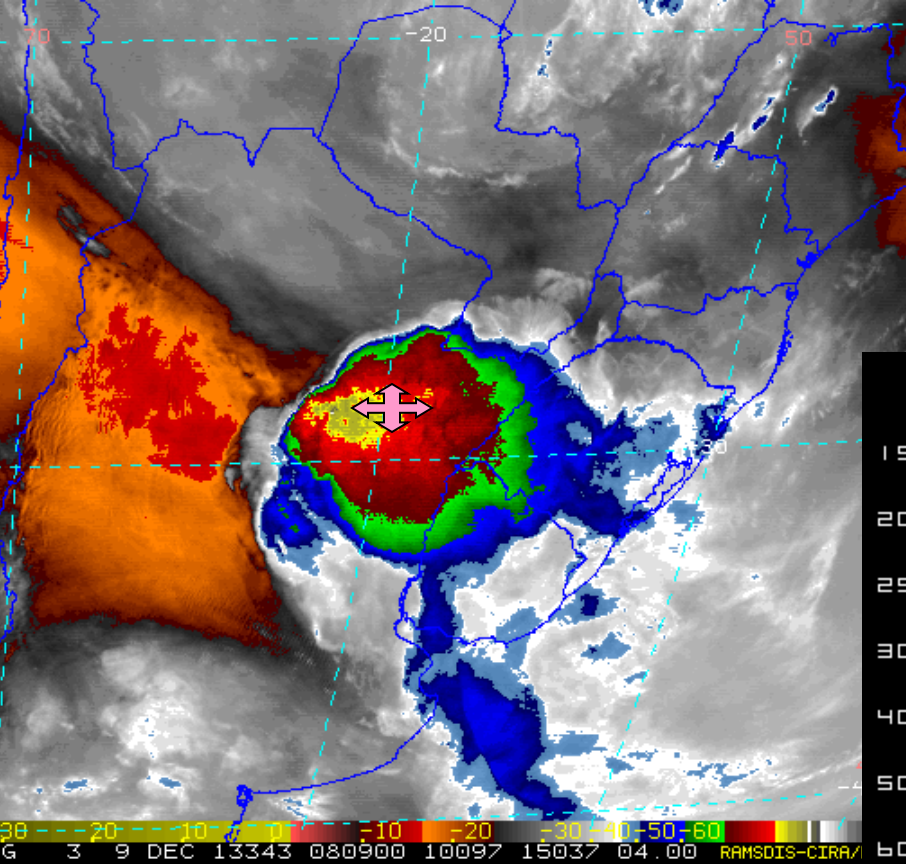
Forecast 08/09 Dec 2013



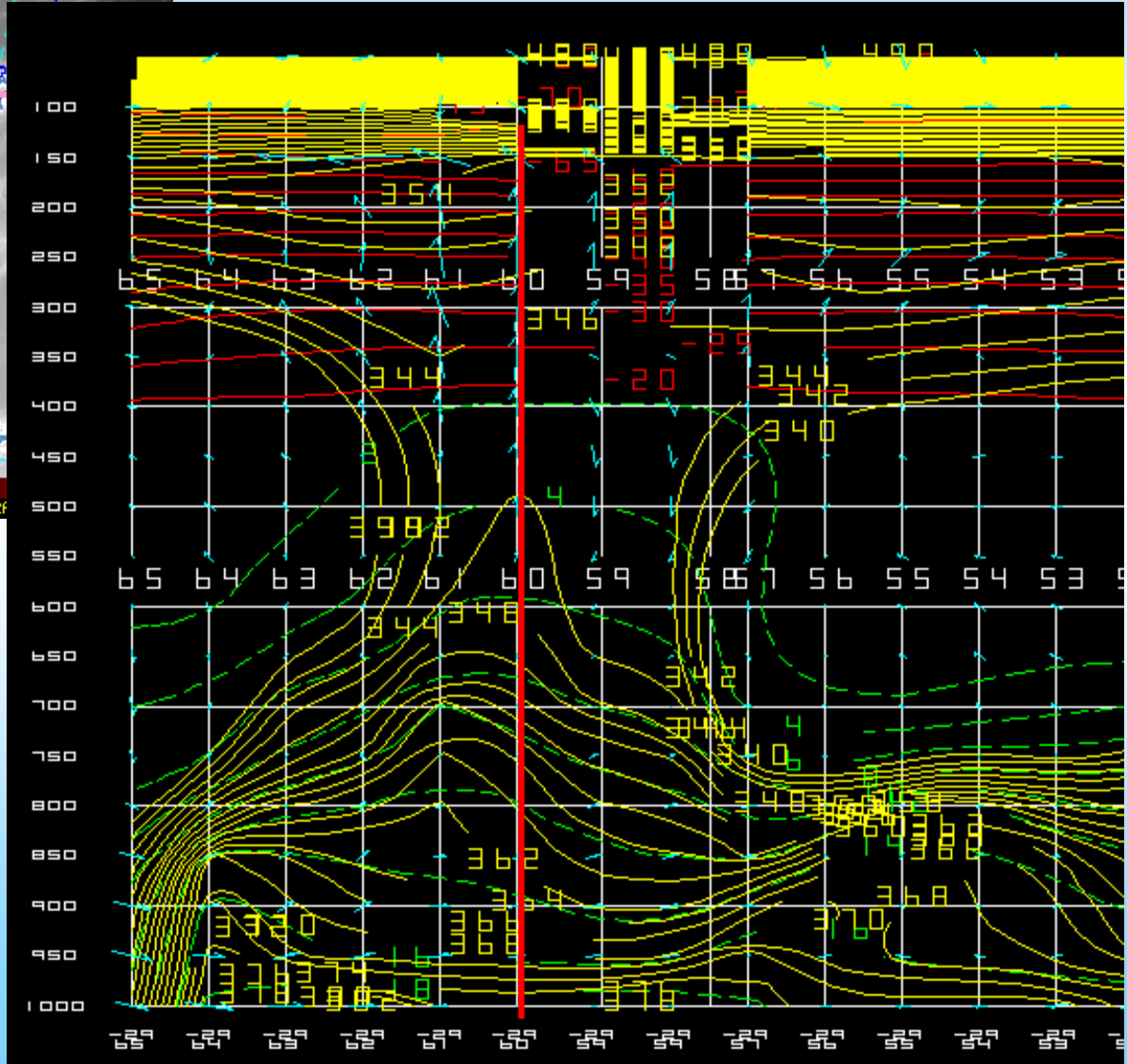
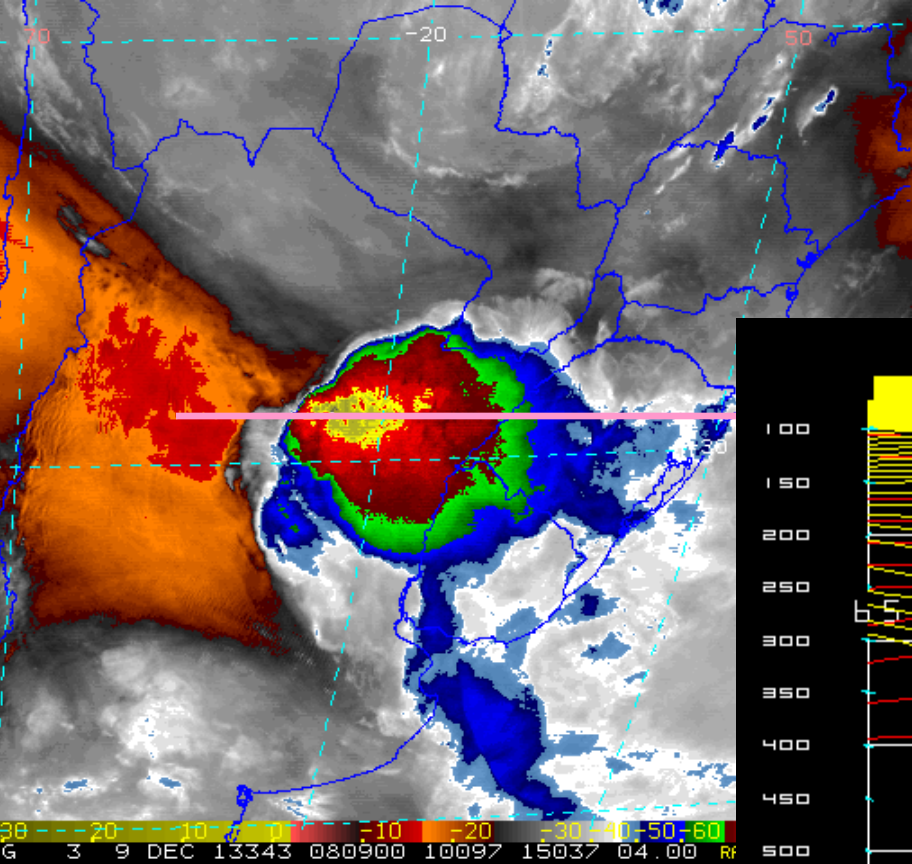
08 --- 20 --- 10 --- 50 --- 10 --- 20 --- 30 --- 40 --- 50 --- 60 (C)
G 3 9 DEC 13343 080900 10097 15037 04.00 RAMSDIS-CIRA/RAMM



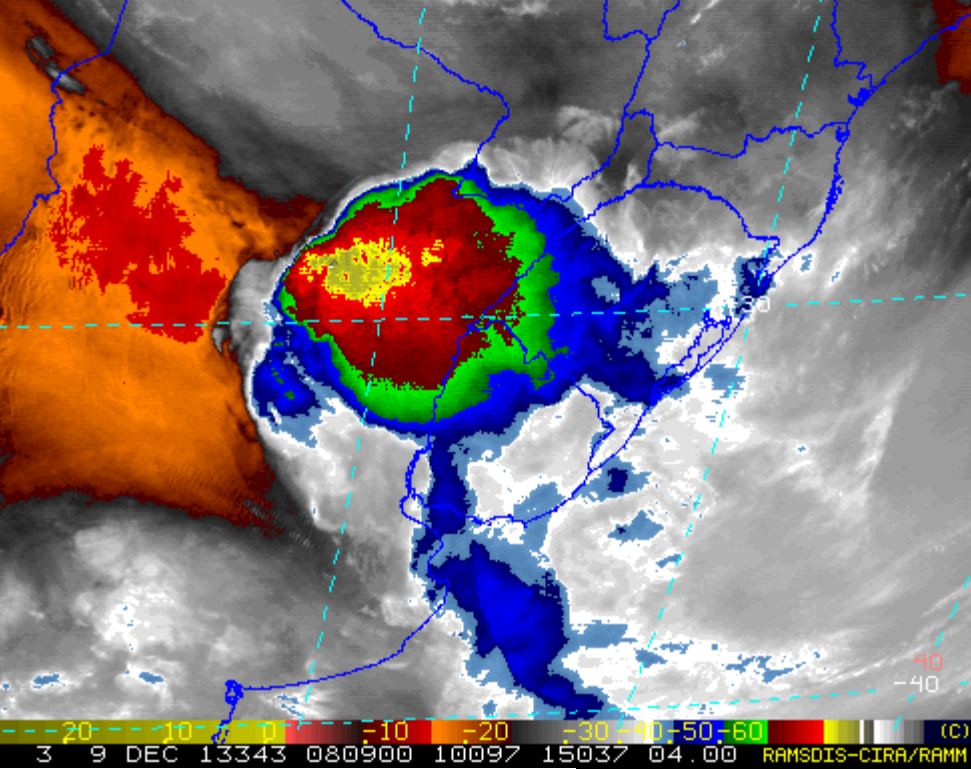
Forecast 08/09 Dec 2013



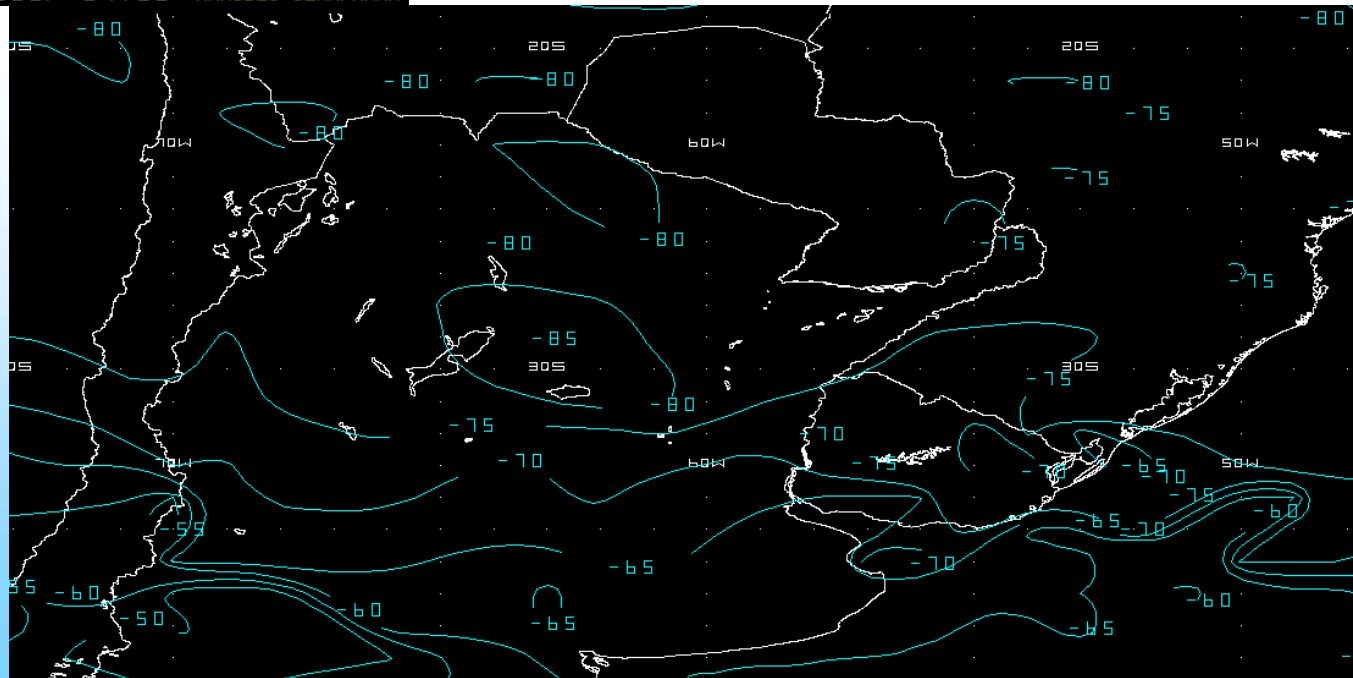
Forecast 08/09 Dec 2013



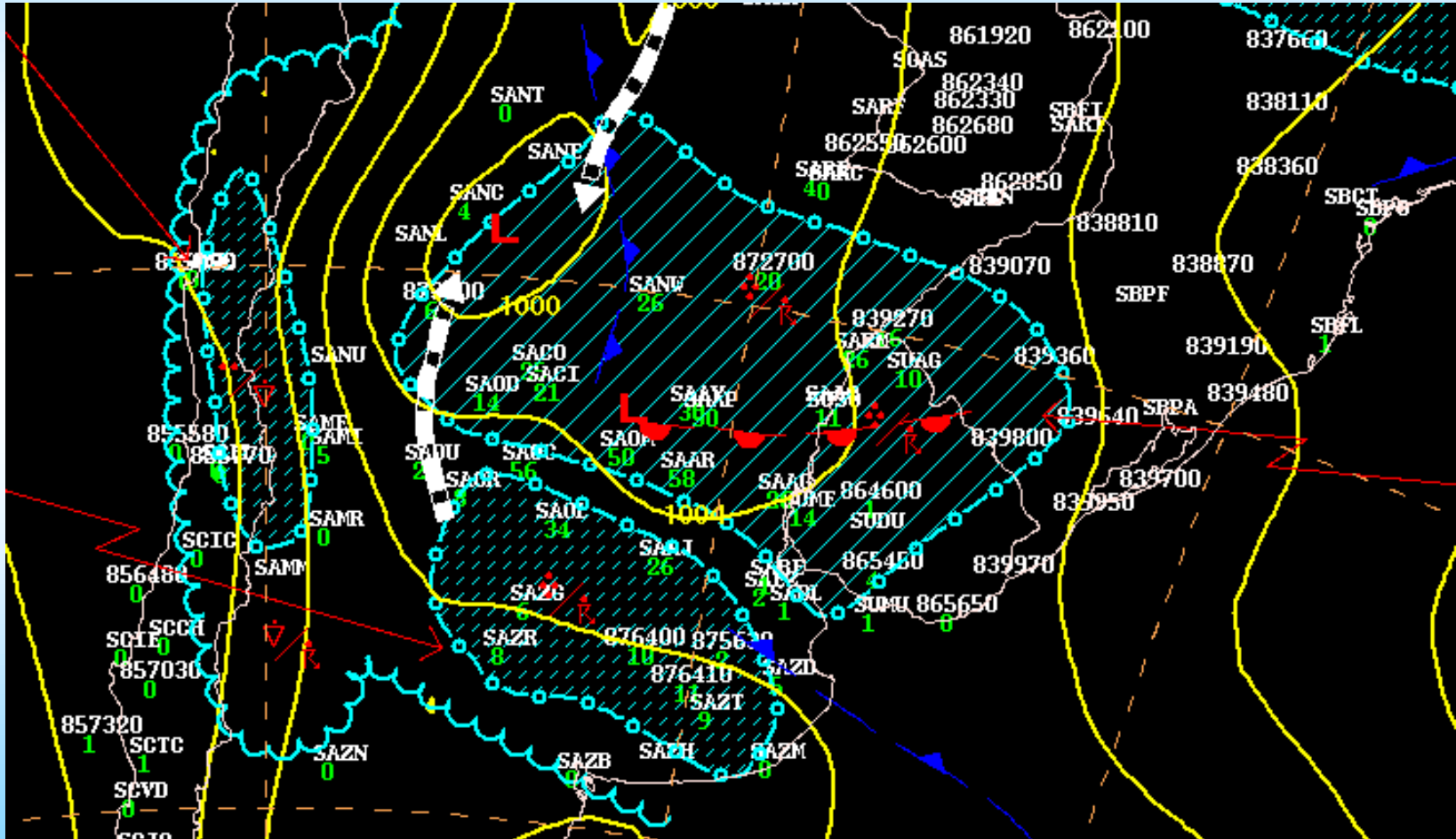
Forecast 08/09 Dec 2013



---20---10---0---10---20---30---40---50---60 (C)
3 9 DEC 13343 080900 10097 15037 04.00 RAMSDIS-CIRA/RAMM



Verification





Training

- Working methods
- Utilization of resources
- Application of knowledge / tools
- Work discipline

Mainly

TRUST MYSELF



Application



¿Question?

