

Oboe 1

W. A. Mozart

Divertimento Nr.4
für 2 Oboen und Baritonoboe

eingrichtet nach KV 439b

Divertimento Nr. 4

KV 439b Nr.16-20

Oboe 1

Allegro

7

12

17

23

29

35

41

46

52

57

p

62

68

sf p sf p f

74

Larghetto

p dolce

4

9

p

15

dolce

19

23

f f

27

p

Oboe 1

Divertimento Nr.4

4

Menuetto

Musical score for Oboe 1, Menuetto. The piece is in 3/4 time and consists of two main sections: Menuetto and Trio. The Menuetto section (measures 1-22) is in G major and features a melody with dynamic markings of *f* and *p*. The Trio section (measures 23-50) is in G minor and features a more complex melody with dynamic markings of *p* and *f*, including trills (*tr*). The score is written on a single staff with a treble clef. Measure numbers 8, 16, 23, 30, 37, 45, and 51 are indicated at the start of their respective lines.

Menuetto da capo

Adagio

Musical score for Oboe 1, Adagio. The piece is in common time (C) and features a slow, lyrical melody. The dynamic marking is *p dolce*. The score is written on a single staff with a treble clef. Measure numbers 7 and 12 are indicated at the start of their respective lines.

Oboe 1

Divertimento Nr.4

Allegretto

9 *p* *f* *p* *f*

17 *f* *p* *f* *tr*

25 *p* *mf* *p* *f* *tr*

33 *p* *f* *p* *f*

41 *p* *f*

49 *p* *fp*

57 *f* *p*

65 *f* *p* *f*

73 *p* *f*

82 *p* *f* *p*

91 *cresc.* *f*

101 *p* *f* *p* *f*

W. A. Mozart

Divertimento Nr.4
für 2 Oboen und Baritonoboe

eingrichtet nach KV 439b

Divertimento Nr. 4

KV 439b Nr.16-20

Oboe 2

Allegro

7

12

17

23

29

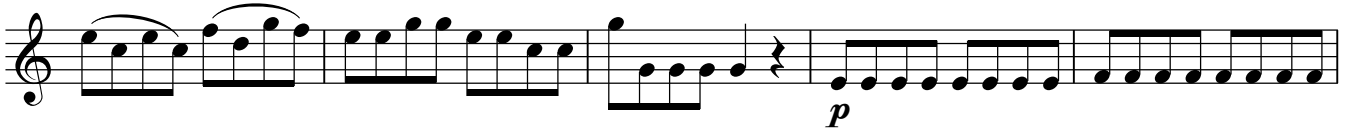
35

41

46

52

57



62



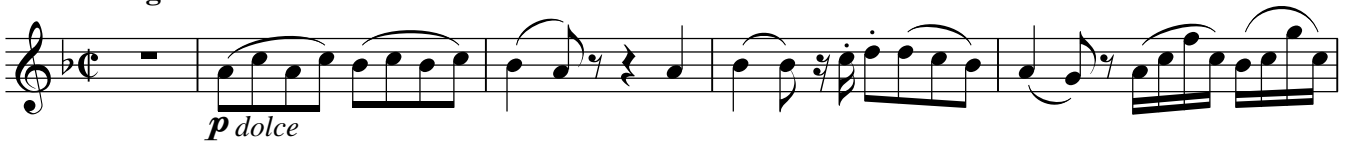
68



74



Larghetto



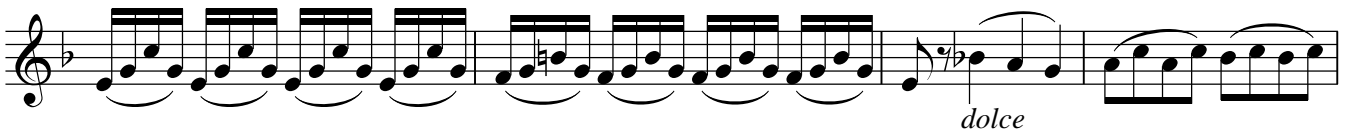
4



9



14



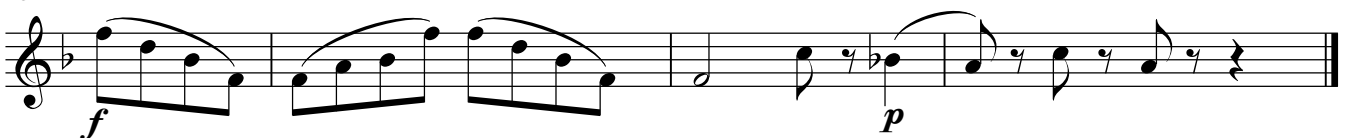
18



22



25



Menuetto

Musical notation for the Menuetto section, measures 1-16. The music is in 3/4 time and features dynamic markings of *f* (forte) and *p* (piano). The notation includes slurs, accents, and repeat signs.

Trio

Musical notation for the Trio section, measures 17-50. The music is in 3/4 time and features dynamic markings of *f* (forte) and *p* (piano). The notation includes slurs, accents, and a trill (*tr*) in measure 30. The section concludes with a double bar line and repeat sign.

Menuetto da capo

Adagio

Musical notation for the Adagio section, measures 51-12. The music is in common time (C) and features dynamic markings of *p dolce* (piano dolce) and *p* (piano). The notation includes slurs and repeat signs.

Oboe 2

Divertimento Nr.4

Allegretto

p *f* *p* *f*

9 *f* *p* *f*

17 *p* *f*

25 *p* *f*

33 *cresc.* *f*

41 *p* *f* *p* *f*

49 *p* *f*

57 *fp*

65 *f* *p*

73 *f* *p* *f*

82 *p* *f*

91 *p* *f* *p*

101 *cresc.* *p* *f* *p* *f*

Baritonoboe

W. A. Mozart

Divertimento Nr.4
für 2 Oboen und Baritonoboe

eingrichtet nach KV 439b

Divertimento Nr. 4

KV 439b Nr.16-20

Baritonoboe

Allegro

7

12

17

23

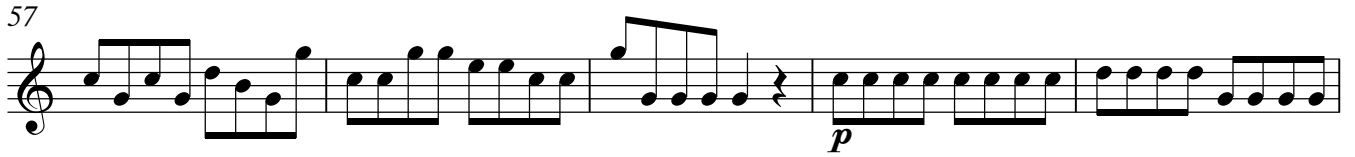
29

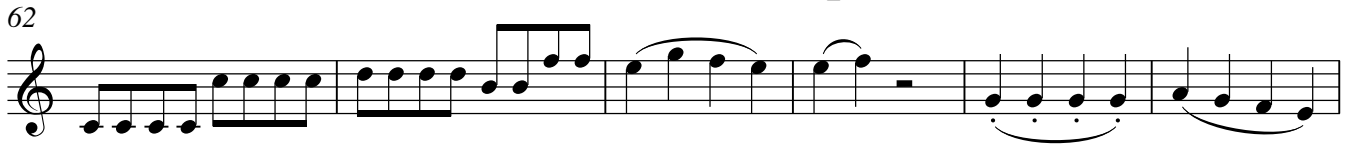
35

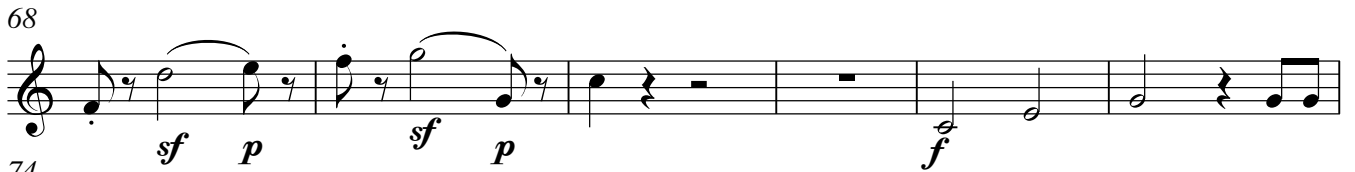
41


46

52

57 

62 

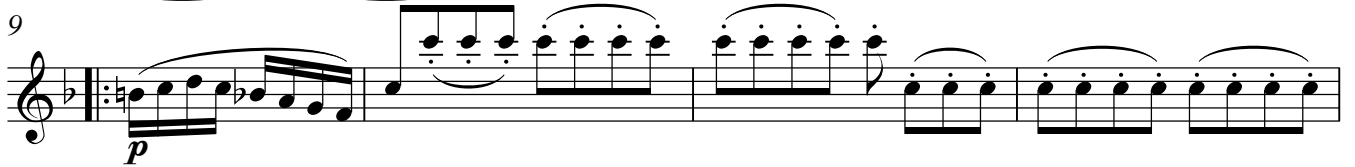
68 

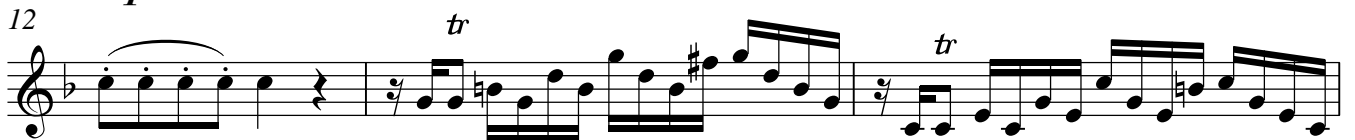
74 


Larghetto

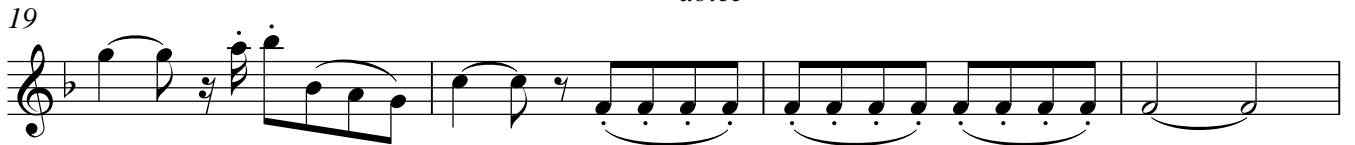


4 

9 

12 

15 

19 

23 

25 

Baritonoboe

Divertimento Nr.4

4

Menuetto

Musical notation for the Menuetto section, measures 1-16. The music is in 3/4 time and features dynamic markings of *f* (forte) and *p* (piano). The notation includes slurs, accents, and repeat signs.

Trio

Musical notation for the Trio section, measures 17-50. The music is in 3/4 time and features dynamic markings of *p* (piano) and *f* (forte). The notation includes slurs, accents, and repeat signs. A first ending bracket labeled '2' is present over measures 40-42.

Menuetto da capo

Adagio

Musical notation for the Adagio section, measures 51-12. The music is in common time (C) and features dynamic markings of *p dolce* (piano dolce) and *p* (piano). The notation includes slurs, accents, and repeat signs.

Baritonoboe

Divertimento Nr.4

Allegretto

9 *p* *f* *p* *f*

17 *f* *p* *f*

25 *p* *f*

33 *p cresc.* *f*

41 *p* *f* *p* *f*

49 *p* *f*

57 *p* *fp*

65 *f* *p*

73 *p* *f* *p* *f*

82 *p* *f*

91 *p* *f* *p*

101 *cresc.* *f*

p *f* *p* *f*