

Violin I

Suite from "King Arthur"

1. Overture

Henry Purcell (1658 - 1695)

James Brown

(parts typeset by H. S. Gardner)

Maestoso $\text{♩} = 48$

f *p* *f* *p* *f*

p *f* *p* *f*

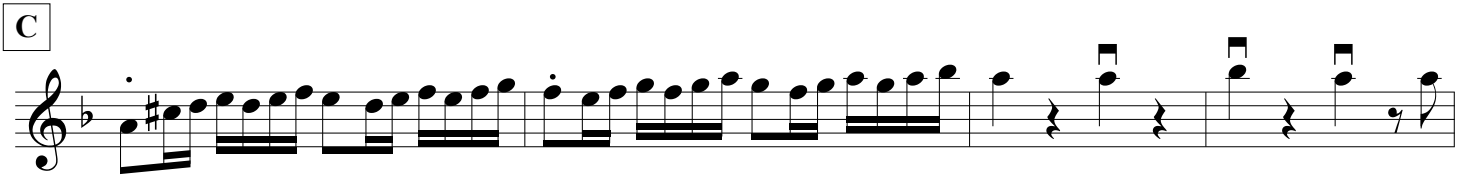
p *f*

rit.

Allegro (M.M. $\text{♩} = 96$)

f

f



Suite from "King Arthur"

1. Overture

Henry Purcell (1658 - 1695)

James Brown

(parts typeset by H. S. Gardner)

Maestoso ♩ = 48

f *p* *f* *p* *f*

5 *p* **A** *f* *p* *f*

9 *p* *f*

13

17 *rit.*

Allegro (M.M. ♩ = 96)

21 *f*

25

B

29

33

37

C

45

allargando al fine

49

rit.

Suite from "King Arthur"

1. Overture

Henry Purcell (1658 - 1695)

James Brown

(parts typeset by H. S. Gardner)

Maestoso $\text{♩} = 48$

6

11

16

Allegro (M.M. $\text{♩} = 96$)

29

39

allargando al fine

Cello

Suite from "King Arthur"

1. Overture

Henry Purcell (1658 - 1695)

James Brown

(parts typeset by H. S. Gardner)

Maestoso ♩ = 48

6

f *p* *f* *p* *f* *p* **A**

Measures 6-10: Bass clef, 4/4 time. Measure 6 starts with a forte (*f*) dynamic. The music features a series of eighth notes with accents and slurs. Dynamics alternate between *f* and *p*. A box labeled 'A' is placed under the final measure of this line.

11

f *p* *f* *p* *f*

Measures 11-15: Bass clef, 4/4 time. Measure 11 starts with a forte (*f*) dynamic. The music continues with eighth notes and slurs. Dynamics alternate between *f* and *p*.

16

rit.

Measures 16-20: Bass clef, 4/4 time. Measure 16 starts with a forte (*f*) dynamic. The music features a series of eighth notes with slurs. A *rit.* (ritardando) marking is present above the staff.

21

f **B**

Measures 21-31: Bass clef, 4/4 time. Measure 21 starts with a forte (*f*) dynamic. The music features a series of eighth notes with slurs. A box labeled 'B' is placed above the staff.

32

f **C**

Measures 32-37: Bass clef, 4/4 time. Measure 32 starts with a forte (*f*) dynamic. The music features a series of eighth notes with slurs. A box labeled 'C' is placed above the staff.

38

Measures 38-42: Bass clef, 4/4 time. Measure 38 starts with a forte (*f*) dynamic. The music features a series of eighth notes with slurs. A box labeled 'C' is placed above the staff.

43

Measures 43-47: Bass clef, 4/4 time. Measure 43 starts with a forte (*f*) dynamic. The music features a series of eighth notes with slurs. A box labeled 'C' is placed above the staff.

48

rit.

Measures 48-52: Bass clef, 4/4 time. Measure 48 starts with a forte (*f*) dynamic. The music features a series of eighth notes with slurs. A *rit.* (ritardando) marking is present above the staff.

allargando al fine

Measures 53-57: Bass clef, 4/4 time. Measure 53 starts with a forte (*f*) dynamic. The music features a series of eighth notes with slurs. The piece concludes with a fermata over the final note.

Suite from "King Arthur"

1. Overture

Henry Purcell (1658 - 1695)

James Brown

(parts typeset by H. S. Gardner)

Maestoso ♩ = 48

1. Musical staff (Bass clef, 4/4 time). Measures 1-5. Dynamics: *f*. Includes a boxed 'A' at the end of the staff.

2. Musical staff (Bass clef, 4/4 time). Measures 6-11. Dynamics: *f*.

3. Musical staff (Bass clef, 4/4 time). Measures 12-16.

4. Musical staff (Bass clef, 4/4 time). Measures 17-19. Dynamics: *rit.* **Allegro** (M.M. ♩ = 96). Includes a 10-measure rest.

5. Musical staff (Bass clef, 4/4 time). Measures 20-35. Includes a boxed 'B' at the start.

6. Musical staff (Bass clef, 4/4 time). Measures 36-41. Includes a boxed 'C' at the end.

7. Musical staff (Bass clef, 4/4 time). Measures 42-47.

8. Musical staff (Bass clef, 4/4 time). Measures 48-52. Dynamics: *rit.* *allargando al fine*.

SUITE FROM THE OPERA "KING ARTHUR"

HENRY PURCELL (1658 - 1695.)

Arranged, edited, fingered and bowed by
JAMES BROWN.

I. OVERTURE.

PIANO.

Maestoso.

sempre marcato p

A

Allegro.

First system of a piano score. The right hand features a melodic line with eighth and sixteenth notes, while the left hand provides a steady accompaniment of eighth notes. A dynamic marking of *f* (forte) is present at the end of the system.

Second system of the piano score. It includes a section marked with a box containing the letter 'B'. The right hand has a more complex texture with chords and moving lines. A dynamic marking of *ff* (fortissimo) is visible at the end of the system.

Third system of the piano score. The right hand continues with a melodic line, and the left hand has a rhythmic accompaniment. A dynamic marking of *mf* (mezzo-forte) is present. The system concludes with the text "s. & B. 2340." and two asterisks.

Fourth system of the piano score. It features a section marked with a box containing the letter 'C'. The right hand has a melodic line with some chromaticism. A dynamic marking of *mf* is present at the end of the system.

Fifth system of the piano score. The right hand has a melodic line with some chromaticism. A dynamic marking of *mf* is present at the end of the system.

Sixth system of the piano score. It includes a section marked with a box containing the letter 'C'. The right hand has a melodic line with some chromaticism. A dynamic marking of *mf* is present. The system concludes with the text "allargando al fine." and a double bar line.