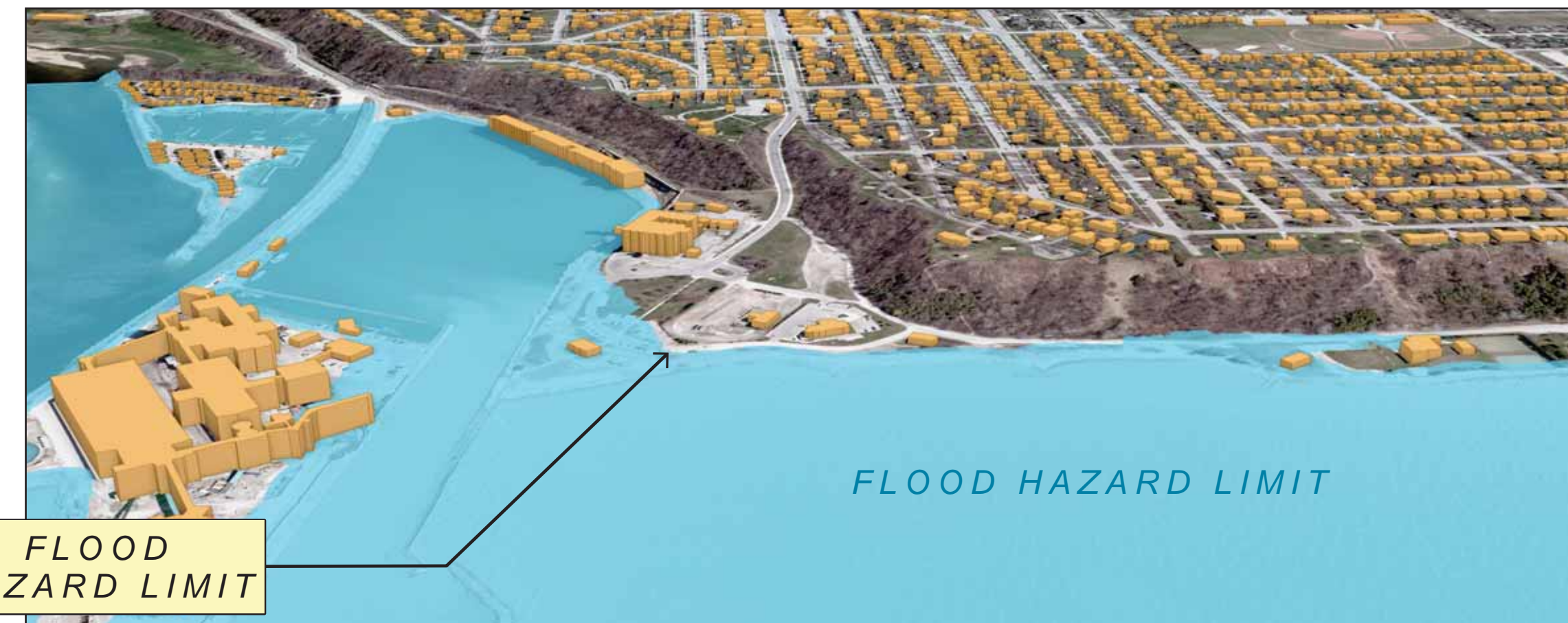
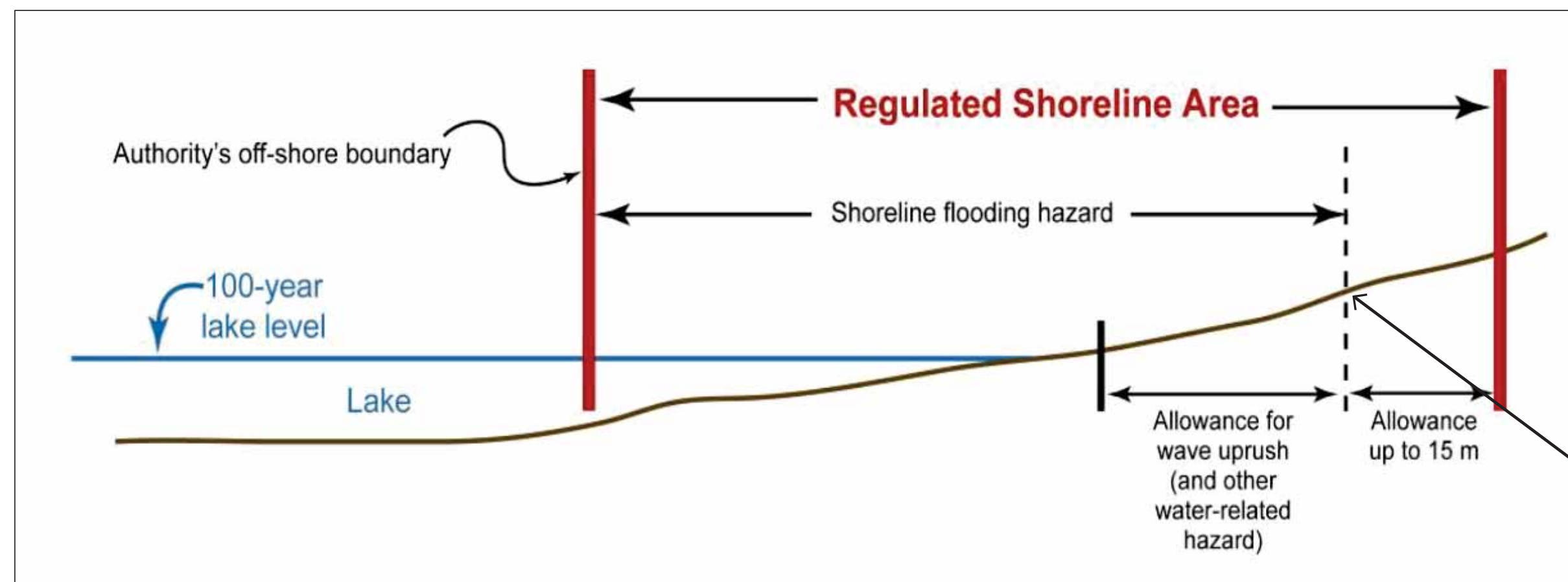


SHORELINE HAZARD DEFINITIONS

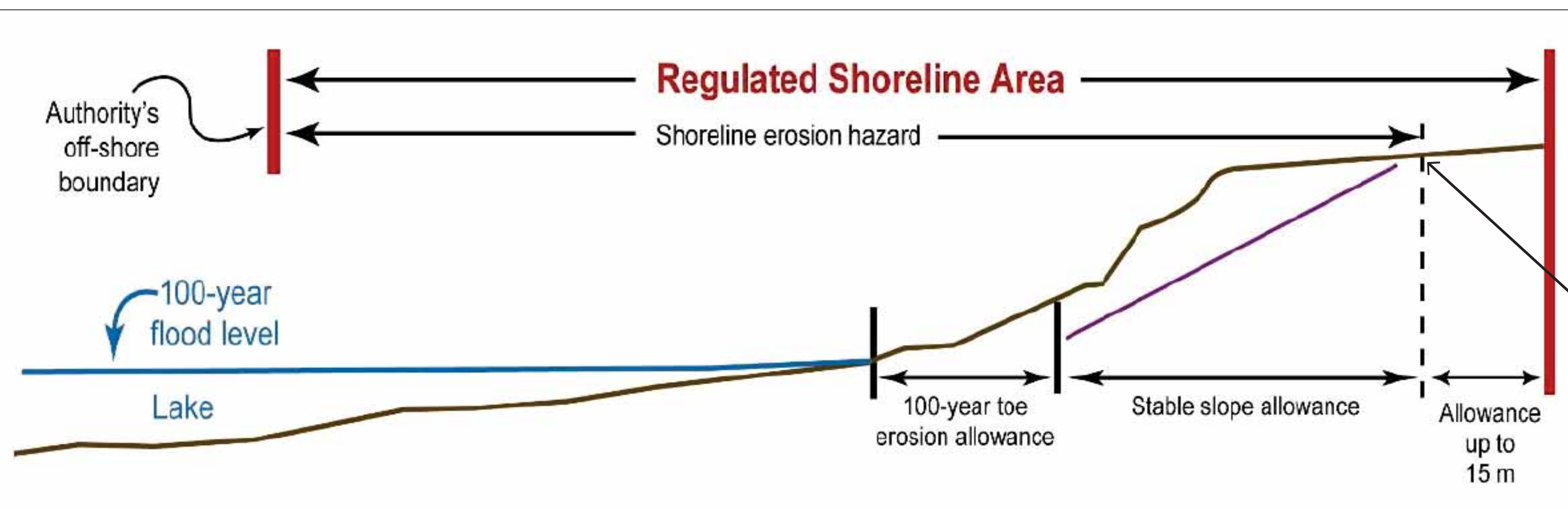
Natural hazards affecting Great Lakes shorelines are defined in the Technical Guidelines for Great Lakes – St. Lawrence River Shorelines (MNR, 2001) and the Guidelines for Developing Schedules in Regulated Areas (CO and MNR, 2005).

The *Regulated Area* is determined by the greatest landward extent of the hazardous lands plus an additional allowance determined by the Authority (maximum 15 m).

Flooding Hazard



Erosion Hazard



Dynamic Beach Hazard

