

Retreat:

The goal of the Retreat strategy is to relocate public or private assets that are exposed to significant risk associated with coastal hazards. The Retreat strategy is considered when other PARRAP categories are unable to mitigate the risk or cannot be reasonably implemented due to constructability, permitting constraints, negative environmental impacts, or where the cost to mitigate the risk is greater than the assets under threat.

Real-world Example:

Bluff failure in early 1990s threatens home.

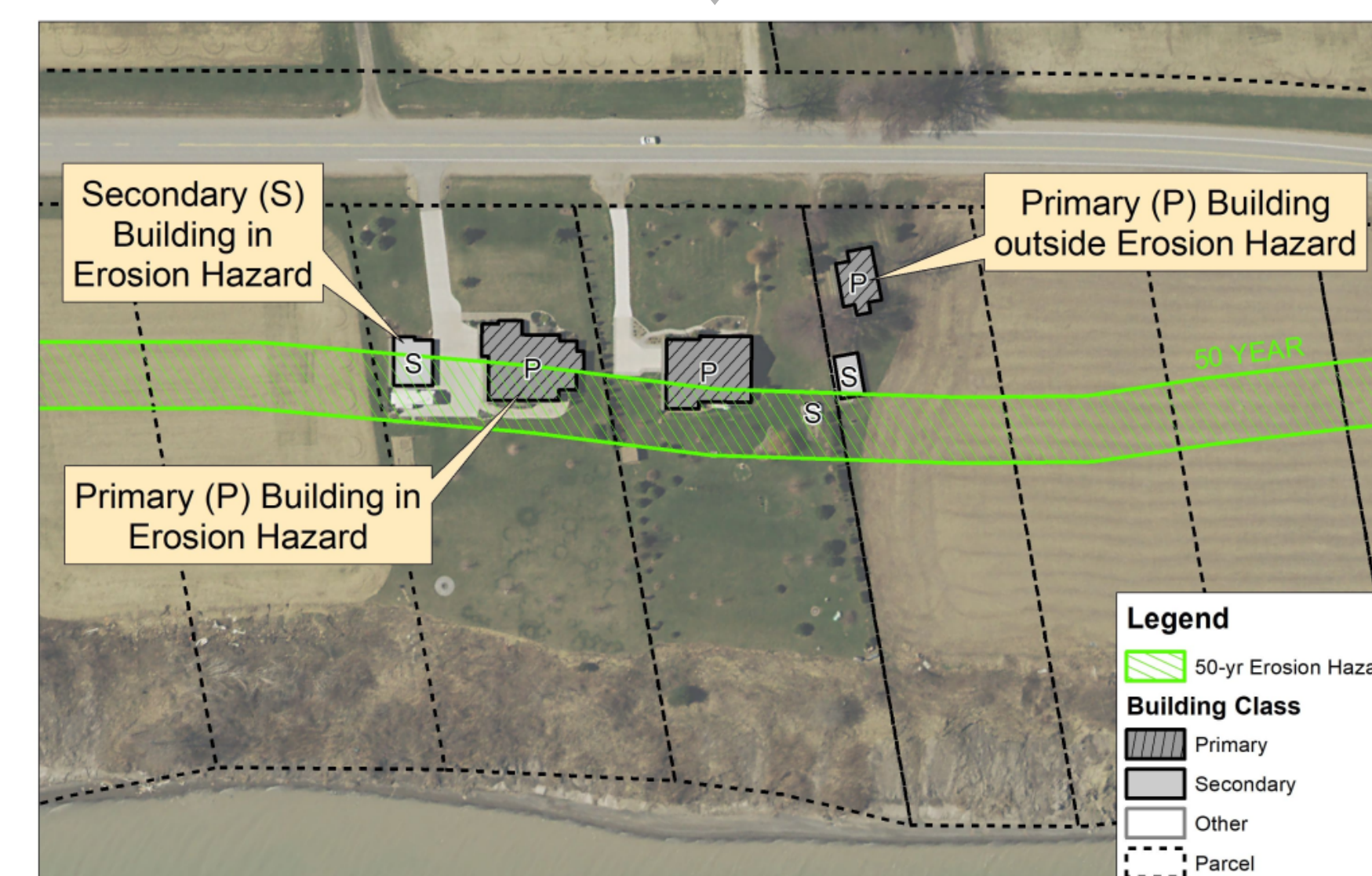


Same building successfully relocated ~30 m from the bluff edge.



Existing homes moved to north side of new road away from hazard.

Shoreline hazard mapping and risk assessment studies can identify buildings at risk that may be suitable for future relocation.



Buildings constructed on movable foundations allow for retreat from shoreline erosion and flooding hazards.

