

Re-align:

The goal of the Re-align strategy is to change land use where public or private assets are exposed to significant risk. It is considered when other PARRAP categories are not sufficient to mitigate the risk or cannot be reasonably implemented due to constructability, permitting constraints, negative environmental impacts or where the cost to mitigate the risk is greater than the assets under threat.



Roads threatened by erosion



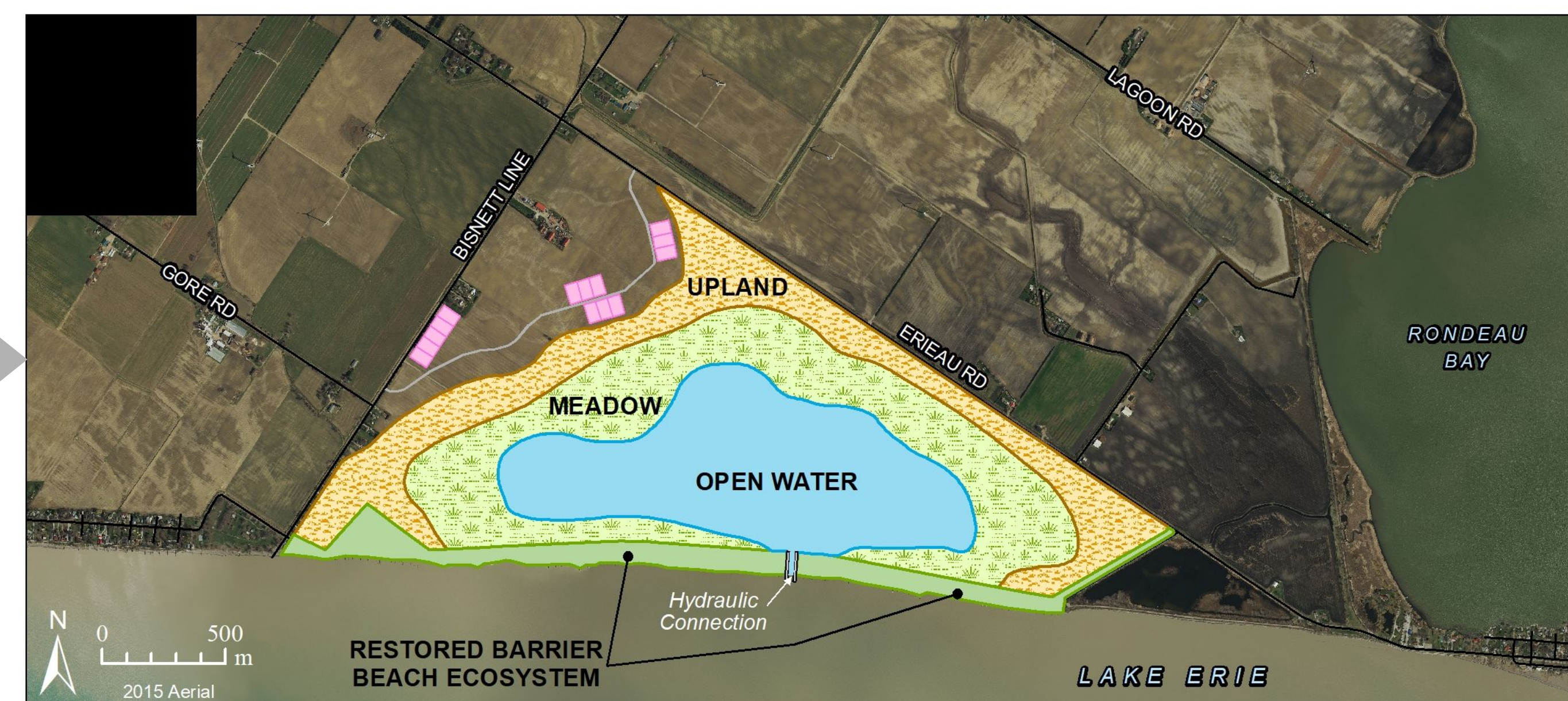
Waves overtopping shore protection which can lead to building damage and flooded roads.



Aerial view of flood extent over road and diked farmland.



Re-align Concept: Long-term property buyout program used to transform hazardous lands to a new barrier beach wetland system.



Real-world Example:

Road was moved 800m inland and realigned to maintain the integrity of the transportation corridor.

