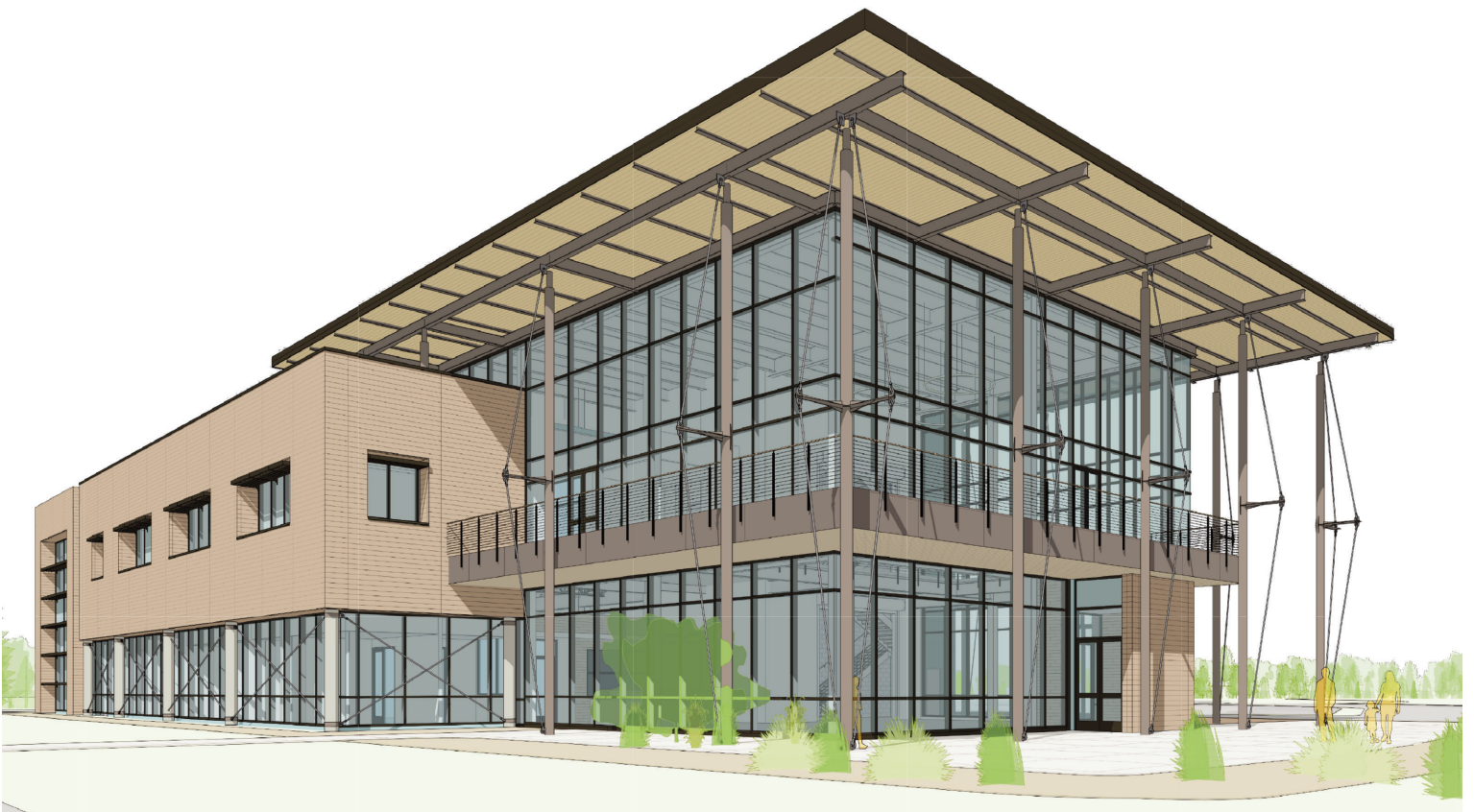


The Freshwater Research & Innovation Center

TRAVERSE CITY, MICHIGAN



OVERVIEW



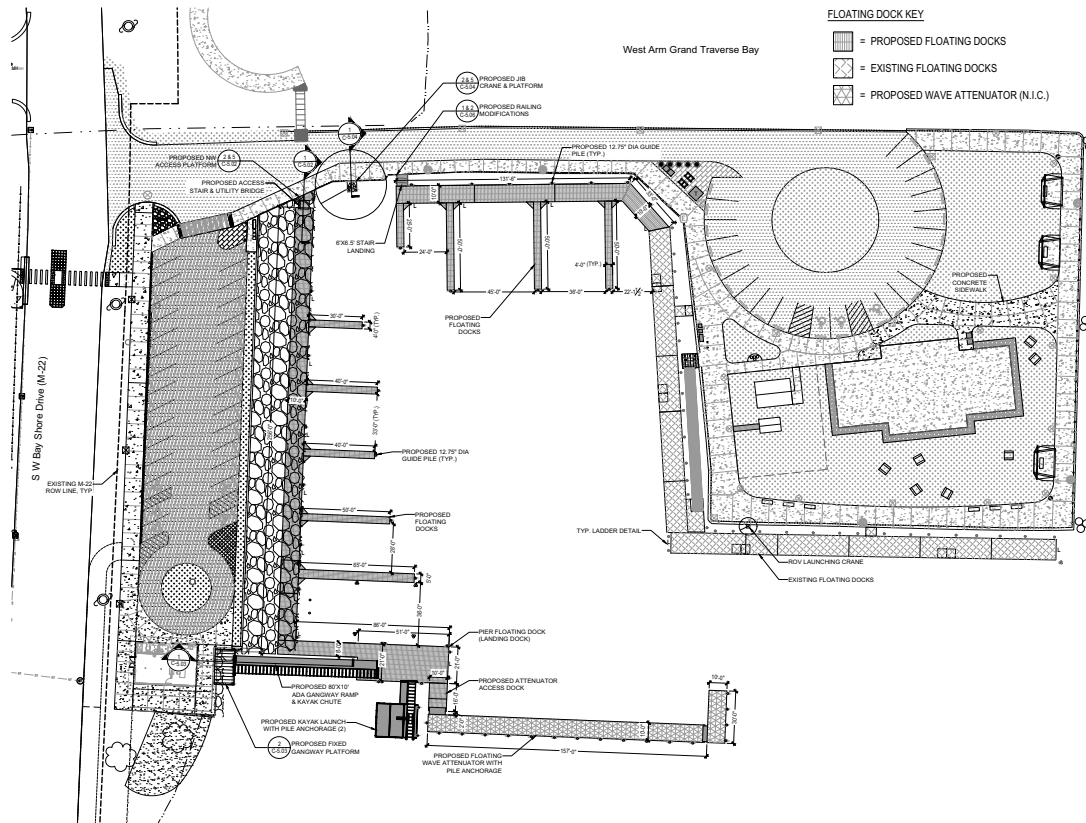
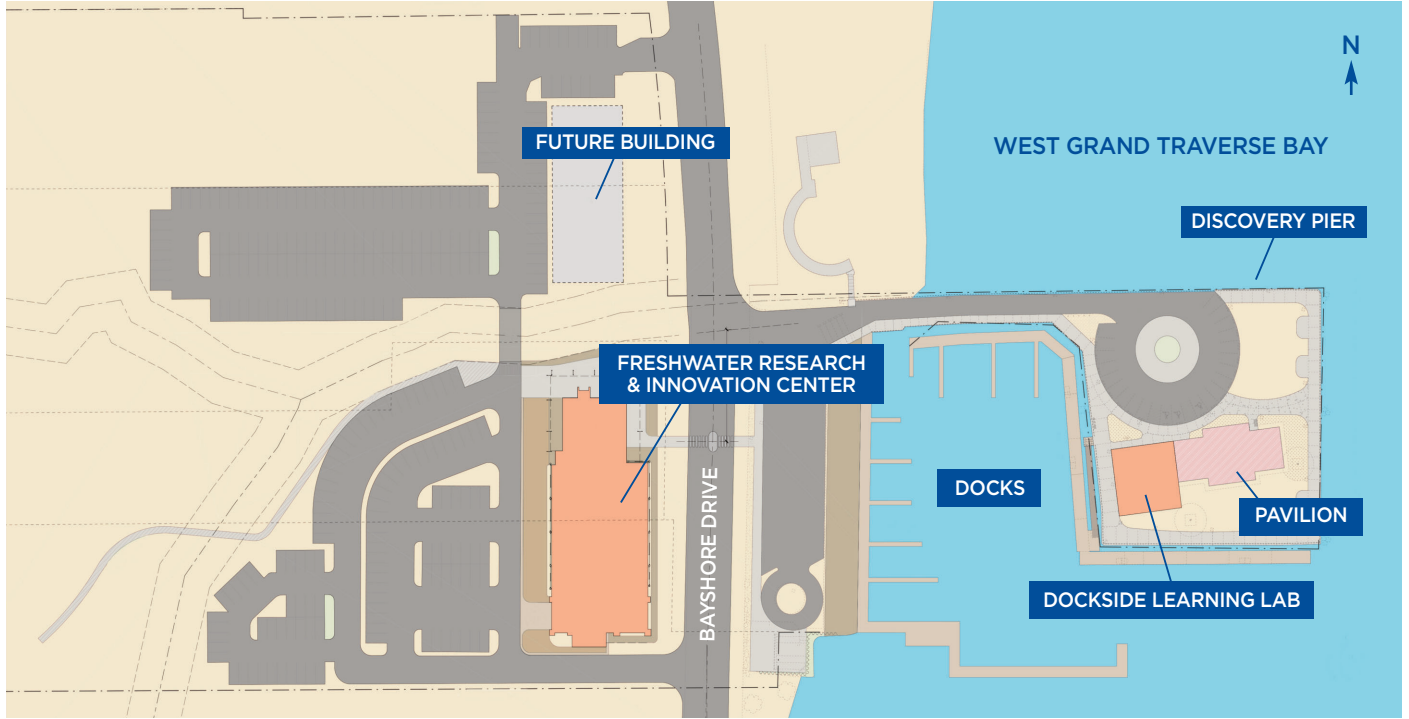
The Freshwater Research and Innovation Center is a 38,000-square-foot technology facility dedicated to providing space for education, research, innovation, incubation, and commercialization in freshwater technology on the Discovery Pier's campus in Traverse City, Michigan.

The facility has been designed for Great Lakes research and as launchpad for the development and

innovation of emerging blue technologies. With flexible lab spaces, extensive lab support services and broader blue-tech ecosystem support, the Center will be a collaborative environment where water education, research, and innovation translate directly into "Blue Tech" sector jobs and new businesses.



SITE PLAN



CORNERSTONE ARCHITECTS

iDesign
iDesign Solutions, LLC
architects scientists & lab planners

Peter Basso Associates
CONSULTING ENGINEERS

JDH
Structural Engineering

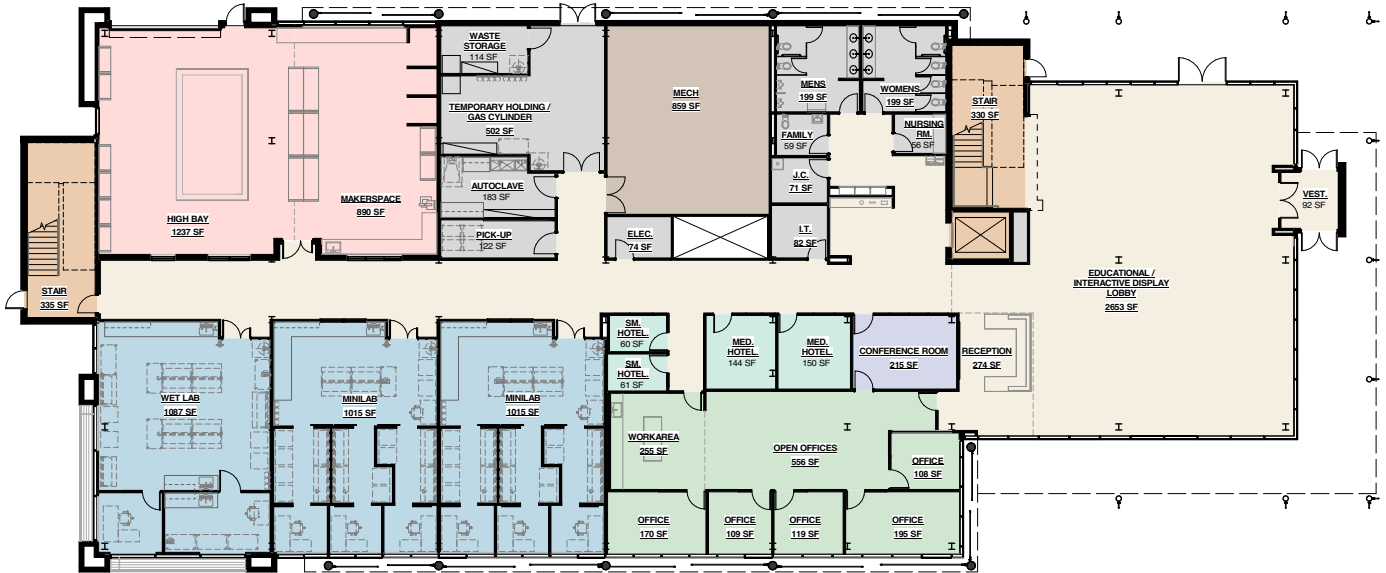
Gosling Czubak
engineering sciences, inc.

FLOOR PLANS

LEGEND

- CONFERENCE/ LG. LEARNING LAB
- HIGH BAY
- HOTELLING
- OFFICE
- LAB MODULE
- CIRCULATION
- VERTICAL CIRCULATION
- BUILDING SUPPORT
- MECHANICAL

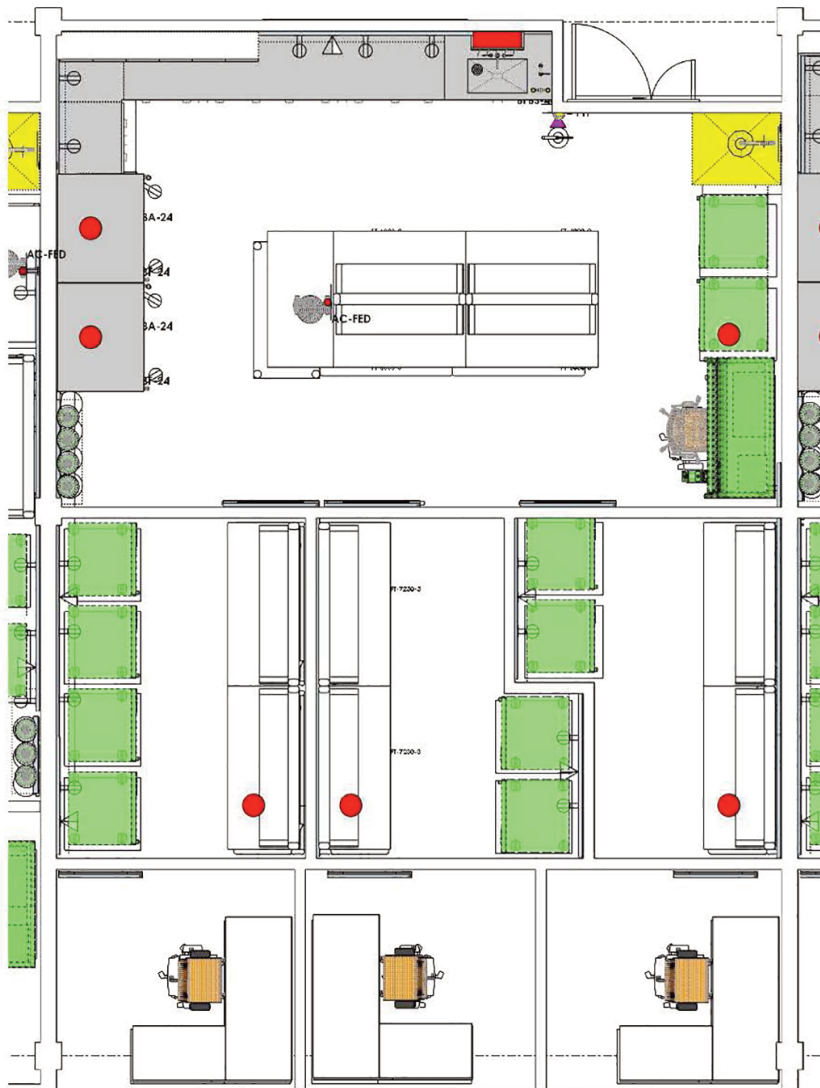
FIRST FLOOR



SECOND FLOOR



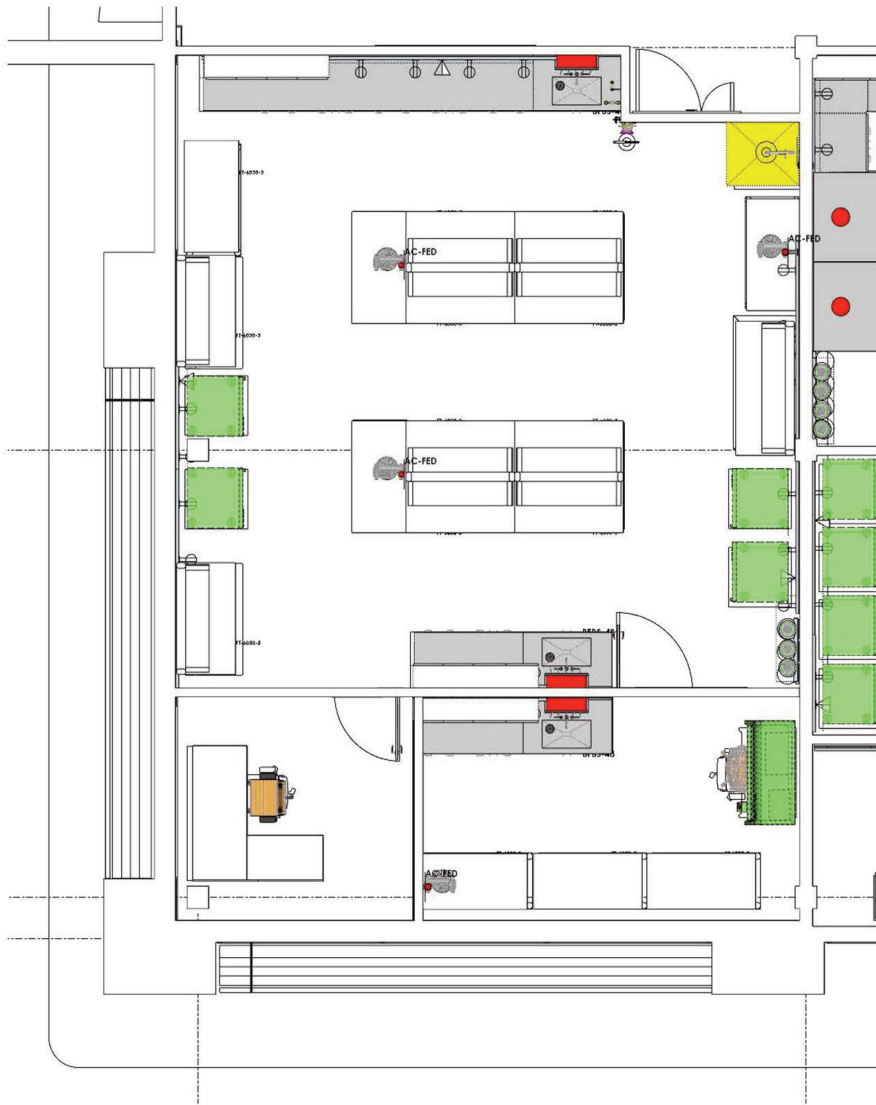
MINI LAB



The mini-labs are designed to support the operations of up to three distinct entities or researchers with a common/shared area for equipment. Each of the approximately 1,000-square-foot labs is equipped with the following amenities:

- Three dedicated individual private lab areas
- Three dedicated individual office areas
- One large shared lab equipped with the following:
 - Fume hoods (upper floors only)
 - Equipment exhaust snorkel
 - Emergency power
 - DI water
- Flexible casework
- Space for user-dedicated equipment

WET LAB



The wet labs are designed to support the operations of a single entity or researcher. Each of the approximately 1,000-square-foot labs is equipped with the following amenities:

- Large common area lab space
- Separated offices area
- Shared lab each equipped with the following:
 - Fume hoods (upper floors only)
 - Equipment exhaust snorkel
 - Emergency power
 - DI water
- Flexible casework
- Space for user-dedicated equipment

COMMUNAL SPACES

The Freshwater Research and Innovation Center layout supports community with both public spaces on the main level and private user spaces on the second level.



First Floor / Main Lobby

Interactive public display space showcasing the building's activities and work being undertaken in the Great Lakes with an emphasis on the role of marine technology in data collection and use.



Second Floor

Building-specific community space that supports research collaboration and meetings along with a cafe.

BUILDING AMENITIES

The facility will support multiple research, innovation, and product development needs with an extensive list of service-based amenities that include the following:

- Conference rooms
- Seminar / classroom
- Hotel office spaces
- Foodservice
- Office support (copier, printer, mailroom, etc.)
- Makerspace equipment with 3-D printers, electronics lab, welding and paint booth
- High bay space with indoor water tank and gantry crane with 3,000 lb. capacity
- Decontamination autoclave
- Centralized DI water system
- Chemical and biological storage and disposal area
- Glassware washing equipment
- Dedicated storage

OUR FOUR PILLARS

EDUCATION	Through partnerships with leading colleges and universities, the Center will host nationally recognized career programs for Freshwater Studies and Freshwater & Marine Technology to strengthen and feed the workforce pipeline.
RESEARCH	With direct access to Lake Michigan, research vessels, and high-tech lab space and equipment, researchers will develop new methods and systems to understand our natural world, informing discoveries that bring about a better future for the lands, waters, and inhabitants of the Great Lakes region and beyond.
INNOVATION	By aligning education and research with innovation space, experts can lean into cycles of learning, development, and refinement to fast-track the creation of new technologies and advance our understanding, management, and preservation of freshwater.
ECONOMIC DEVELOPMENT	The Center will include new business incubation and accelerator space and programs to remove barriers and support the transformation of top innovations into successful companies and careers. Our ability to facilitate the transfer of innovative technology into marketable products and a trained workforce will make us unique and a key contributor to the blue technology sector.

CONTACT:

Matt McDonough
Chief Executive Officer
Discovery Pier
231.409.4285
matt@discoverygreatlakes.org

Ed Bailey
Marine Center Director
Northwestern Michigan College
231.995.1215
ebailey@nmc.edu

The Freshwater Research & Innovation Center | 13170 S West Bay Shore Dr., Traverse City, Michigan 49684