



Published in final edited form as:

IEEE Trans Biomed Eng. 2013 May ; 60(5): . doi:10.1109/TBME.2012.2230631.

Wireless Insufflation of the Gastrointestinal Tract

Jenna L. Gorlewicz [Student Member, IEEE],
Vanderbilt University, Nashville, TN 37235 USA

Santina Battaglia,
Vanderbilt University, Nashville, TN 37235 USA

Byron F. Smith [Student Member, IEEE],
Vanderbilt University, Nashville, TN 37235 USA

Gastone Ciuti [Student Member, IEEE],
Scuola Superiore Sant'Anna, Pisa, 56025 Italy

Jason Gerding,
Vanderbilt University, Nashville, TN 37235 USA

Arianna Menciassi [Member, IEEE],
Scuola Superiore Sant'Anna, Pisa, 56025 Italy

Keith L. Obstein,
Vanderbilt University, Nashville, TN 37235 USA

Pietro Valdastrì [Member, IEEE], and
Vanderbilt University, Nashville, TN 37235 USA

Robert J. Webster III [Member, IEEE]
Vanderbilt University, Nashville, TN 37235 USA

Jenna L. Gorlewicz: jenna.gorlewicz@vanderbilt.edu; Santina Battaglia: s.battaglia@studenti.unipi.it; Byron F. Smith: byron.smith@vanderbilt.edu; Gastone Ciuti: g.ciuti@sssup.it; Jason Gerding: jason.s.gerding@vanderbilt.edu; Arianna Menciassi: arianna.menciassi@sssup.it; Keith L. Obstein: keith.obstein@vanderbilt.edu; Pietro Valdastrì: p.valdastrì@vanderbilt.edu; Robert J. Webster: robert.webster@vanderbilt.edu

Abstract

Despite clear patient experience advantages, low specificity rates have thus far prevented swallowable capsule endoscopes from replacing traditional endoscopy for diagnosis of colon disease. One explanation for this is that capsule endoscopes lack the ability to provide insufflation, which traditional endoscopes use to distend the intestine for a clear view of the internal wall. To provide a means of insufflation from a wireless capsule platform, in this paper we use biocompatible effervescent chemical reactions to convert liquids and powders carried onboard a capsule into gas. We experimentally evaluate the quantity of gas needed to enhance capsule visualization and locomotion, and determine how much gas can be generated from a given volume of reactants. These experiments motivate the design of a wireless insufflation capsule, which is evaluated in *ex vivo* experiments. These experiments illustrate the feasibility of enhancing visualization and locomotion of endoscopic capsules through wireless insufflation.

© 2012 IEEE

Correspondence to: Jenna L. Gorlewicz, jenna.gorlewicz@vanderbilt.edu.

Color versions of one or more of the figures in this paper are available online at <http://ieeexplore.ieee.org>.

A preliminary version of the results in Section II has been previously presented at conferences [1], [2].

Index Terms

Capsule colonoscopy; CRC screening; robotic capsules; wireless capsule endoscopy; wireless insufflation

I. Introduction

Each year 140,000 people in the U.S. are diagnosed with colorectal cancer, and approximately 50,000 people die from it [3]. Nearly, all of these deaths are preventable through early diagnosis. The five-year survival rate drops from 90% with early detection to 5% with late detection [4]. Standard colonoscopy is highly effective (above 95% sensitivity and specificity for detecting polyps larger than 10 mm [5]), yet 22 million people neglect medically recommended screenings due to the indignity and discomfort of the procedure [6].

Swallowable capsules have the potential to be much better tolerated by patients [7]. Over the past few years they have become the tool of choice for diagnosis in the small intestine [8], and are widely used there. They have not yet made a similar impact in colorectal cancer screening because of their low specificity (as low as 64% for polyps of any size [9]).

One potential contributing factor to the high false-negative rate of capsule endoscopes in the colon is that, unlike traditional colonoscopes, there is no means of insufflation to distend tissue and enable a clear view of the intestine surface (see Fig. 1). Poor visualization has been shown to be a potential cause for missed adenomas in traditional colonoscopies [12], and the low specificity rate of current capsules suggests that full visualization and examination of the colon are challenging for capsules. To provide insufflation, in this paper we propose the use of biocompatible effervescent chemical reactions as a means of generating large volumes of gas from small volumes of bio-compatible weak acids and bases carried onboard the capsule. We note that in addition to enhanced visualization, a second potential benefit of this approach is to enhance locomotion (see Fig. 1), which would be advantageous in nearly all of the many robotic locomotion methods that have been proposed for capsule endoscopes [13]–[15], particularly those actuated via magnetic fields [11], [16]–[18], and in other miniature surgical robots, such as the mobile robotic platform described in [19], [20]. In this paper, we first experimentally examine how much gas must be generated to enhance visualization and capsule locomotion in the colon in Section II. We then propose effervescent reactions as a means to generate gas in Section III and determine how much gas can be generated from various reactions in Section IV. We then describe the design of an insufflation capsule that makes use of these reactions, and provide *ex vivo* experimental results in Section V.

II. Insufflation Experiments for Design Specifications

Toward determining the amount of insufflation a capsule endoscope must provide to enhance visualization and locomotion in the colon, we conducted the following two experiments.

A. Visualization Enhancement Experiment

An *ex vivo* experiment was conducted using a porcine large intestine 150 cm long and 6 cm in diameter, matching the dimensions of an average adult colon [21] (see Fig. 2). Nine colored markers serving as identifiable fiducials were attached in groups of three, with each marker evenly spaced from the others, at 3 cm linear intervals along the intestine (see Fig. 3(e)). The deflated colon was then placed in a human anatomical model (Limbs & Things

Ltd., Bristol, U.K.) as shown in Fig. 2 in a configuration approximating the curved path of the human colon and sealed at both ends.

A flexible endoscope (13803PKS, Karl Storz GmbH & Company, Germany), placed approximately 4 cm from the markers, was used for visualization, simulating the view from a capsule-based camera. Using a controlled air compressor, the intestine was incrementally inflated through the single channel in the endoscope. The intestine was inflated by increasing the volume of air released in increments of 50 mL from 0 to 500 mL. From 500 to 1000 mL, the increment was changed to 100 mL since significant changes in the field of view were no longer observed. The maximum inflation applied was 1500 mL. An in-line flow sensor (AWM3300V, Honeywell International, Morristown, NJ) was used to measure the inflation volume.

The number of markers visible at each increment is shown in Table I and Fig. 3. From this experiment, we observe that visualization is enhanced almost immediately, with as little as 50 mL of insufflation needed to visualize just under half of the markers. With 200 mL of insufflation, all nine markers first became visible, and after 450 mL of insufflation, all nine markers were consistently visible. These results will be discussed further in Section IV-D, in the context of results obtained from gas generation experiments and insufflation capsule testing.

B. Locomotion Experiment

Insufflation also has the potential to enhance locomotion of capsules that are otherwise impeded by the folds of the deflated intestine. Even with active locomotion methods, such as magnetic guidance, capsules often have difficulty traveling through the entire lumen [11]. To assess the benefits of insufflation for locomotion, we performed a second experiment with a magnetically-actuated capsule, which has previously been validated in an endoscopic setting [11]. A 1.21 T NdFeB N35 permanent magnet (Sintered NdFeB magnets, B and W Technology and Trade GmbH, Germany) having a diameter of 60 mm, a length of 70 mm, and a weight of 1.5 kg, was attached to the end effector of a 6 degree of freedom Mitsubishi RV-3S serial manipulator (Mitsubishi Electric Corp., Japan). Three smaller internal magnets, (MTG Europe Magnet Technology Group, Germany), each having a diameter of 3 mm, a length of 10 mm, and a magnetic flux density of 1.21 T were placed inside of a pill-sized capsule (11 mm diameter \times 26 mm long). The working distance between the internal and external magnets was 150 mm.

The robotic arm was preprogrammed to follow a straight trajectory 300 mm long, which approximates the length of the longest straight portion of the colon. The robot was programmed to stop its motion every 10 mm, rotate around its roll axis by 10° , rotate around its yaw axis by 10° , and then continue forward motion at a velocity of 5 mm/s. The rotational speed was between 5 and 10° /s. This behavior was performed in order to attempt to free the capsule from the collapsed lumen using a procedure similar to that which a surgeon might employ by hand with the magnet, or when teleoperating the robot for the same capsule locomotion purpose (see [11] for more details on magnetic locomotion). In this experiment, the capsule moved at approximately 5 mm/s, the same velocity as the external magnet attached to the robot. We note that Ciuti *et al.* measured the average time it took surgeons to teleoperate a magnetic capsule over a 500 mm collapsed colon to be almost 10 min [11]. Assuming a total length of 1.5 m as previously stated, this would suggest that the capsule could travel the entire length of the colon in less than 30 min.

The magnetic capsule was placed inside fresh porcine large intestine (4 cm diameter), and the intestine was sealed at both ends. A 50 mL syringe connected to a tube whose outlet was located immediately behind the capsule was used to incrementally inflate the intestine in 25

mL intervals from 0 to 250 mL. As shown in Fig. 4, this resulted in local inflation of the colon, such that the capsule could advance up until the far border of the inflation “bubble.” Three trials were performed at each inflation interval.

The distance d traveled by the capsule in this experiment was related to the amount of insufflation by $d = 1.16 v_{\text{air}} + 13.64$, with $R^2 = 0.99$. This equation was calculated by plotting the amount of insufflation provided versus the distance traveled by the capsule, and then fitting a linear model to the data. We observe that locomotion enhancements occur almost immediately, with only 25 mL of insufflation. At this point, the capsule was able to travel 37 mm. With 250 mL of insufflation, the capsule was able to travel the entire length of the desired trajectory. These results will be discussed further in Section IV-D in the context of gas generation experiments and the design of an insufflation capsule.

III. Proposed Solution: Effervescent Reactions

Given the potential benefits of insufflation and the need for an untethered air supply in a capsule endoscope, we now explore the potential of acid/base reactions in producing sufficient gaseous output to meet the visualization and locomotion requirements determined in Section II. In prior work, we explored the potential of using chemofluidic phase transition of hydrogen peroxide as a means for generating gas for insufflation [1]. Peroxide requires small liquid volumes to generate large gas volumes, but it is not biocompatible, and is a safety hazard if accidentally spilled on the intestine [22]. It also requires care to manage the heat generated by the reaction. Mild acid/base reactions, in contrast, create a relatively large amount of gas from basic ingredients that are safe to ingest.

Here, we explore four such candidate acid/base reactions, generated from all combinations of two bases, potassium bicarbonate (KHCO_3) and sodium bicarbonate (NaHCO_3), and two acids, acetic acid ($\text{CH}_3\text{CO}_2\text{H}$) and citric acid ($\text{C}_6\text{H}_8\text{O}_7$). These acids and bases were chosen because they are biocompatible and FDA approved at various concentrations, as are the byproducts of their reactions [23]. Tissue pathology studies will be required in the future to know if the specific concentrations of the acids and bases used in this study may be harmful to the large intestine if directly introduced, but we note that these acids and bases are not meant to come into contact with the intestine at any point, as the entire reaction takes place within the capsule. However, should the contents of the insufflation capsule escape, both potassium and sodium bicarbonate appear to be harmless, as they are found in foods, used in antacids, and do not cause skin irritation. Further, “the (body’s) mechanisms for disposing bicarbonate intake in large amounts through excretion appear to be highly efficient” [23]. Citric acid is also found naturally in foods and does not cause skin irritation at the concentrations used in this study. Thus, we believe it will be safe even for direct large intestine contact. Acetic acid is the acid found in common vinegar (which is acetic acid diluted 20:1 with water). In this study we used undiluted acetic acid, which may cause skin irritation. Thus, there is a reasonable chance of irritation to the intestine lining if it is spilled. Future *in vivo* experiments will be needed to support the aforementioned conjectures on the biocompatibility of these substances, if they are directly introduced into the intestine through a catastrophic capsule malfunction. However, we note that the way the capsule is designed, only small ports are present. This limits the rate at which material can flow out of the capsule, even in an emergency condition, making it highly unlikely that the complete contents of the capsule would ever be directly introduced onto the intestine lining.

Of the two bases, potassium bicarbonate has higher solubility which would suggest a higher gas output, but is not suitable in patients with renal failure or cardiac disease [24]. For this reason, we also explore the sodium bicarbonate reaction, which is expected to have only slightly lower gaseous output, but serves as a viable alternative in these specific cases. In all

of these reactions, when the acid and base are mixed in the presence of water, carbon dioxide (CO_2), water, and a biocompatible citrate (for citric acid) or acetate (for acetic acid) are produced. The fact that CO_2 is released as the output gas (rather than air, oxygen, etc.) is particularly beneficial for insufflation in the colon, due to its rapid absorption by the mucosa, which has been shown to decrease patient discomfort in colonoscopy [25]. In both reactions, water is necessary to disassociate the ion pairs of the base and provide a medium for its protonation by the acid. For this reason, both water and the reactants are carried onboard the capsule, as discussed further in Section V.

IV. Acid Base Reaction Experiments

To determine the necessary volume of acid/base reactants needed to generate a given volume of gas, one may initially think that a simple computation using the chemical decomposition equation would suffice. While these computations provide a general range of reactant and product volumes, there are many factors that are not accounted for in such an ideal equation, including solubility, temperature, and heat of formulation, all of which impact the total volume of the products that are generated from the reaction. For this reason, we conducted a set of experiments to determine the optimal combination of reactants, the optimal water to reactants ratio, and the amount of CO_2 that can be generated from small initial volumes of solution, using the chemical decomposition equation to inform the starting volumes chosen. All experiments were conducted at the same temperature and pressure.

A. Acid Base Combination Experiment

We tested all four combinations of reactants (potassium bicarbonate, sodium bicarbonate, citric acid, and acetic acid), in order to determine which combination resulted in the most CO_2 output. The experimental setup, shown in Fig. 5, involved a mixing flask, a holding flask, and a discharge cylinder. The flasks were connected with rubber tubing and sealed with rubber stoppers. For each combination, one acid and one base were mixed together in the mixing flask, the flask was sealed, and water was added with a syringe. The CO_2 produced by the reaction was transferred to the holding flask, which held the water that was displaced through a plastic tube, a check valve, and into a graduated cylinder. The amount of water displaced corresponds to the gas produced by the reaction.

These experiments were performed with an initial volume of 1 mL total of the two reactants and 0.5 mL of water, for each of the four combinations of acids and bases. The reactants were mixed at stoichiometric ratios, according to the chemical equations of these reactions. We note that the total solution volume was 1.5 mL, a volume that fits within the typical volume (2.5 mL) of a commercial camera pill [26]. To ensure repeatability, three trials of each combination were performed. The amount of water output was recorded every 30 s for 15 min and averaged over the three samples for each combination. The results are shown in Fig. 6. Note that the figure shows only the first 10 min of data collection, as this was the point after which very little changes were observed. These results show that the citric acid solutions produce more CO_2 than the acetic acid solutions, which is consistent with predictions made from the chemical equations of each reaction. Overall, we found that the potassium bicarbonate and citric acid solution resulted in the largest output and fastest rate of reaction. Thus, we use this combination in subsequent experiments. We note, however, that the sodium bicarbonate and citric acid solution produced the second largest gaseous output, and is a good alternative for patients with preexisting renal and cardiac problems, as mentioned previously.

B. Solution Concentration Experiment

Having chosen potassium bicarbonate and citric acid as our preferred reactants, we performed a second experiment to determine the effect of the water to reactant ratio on the rate of the reaction and amount of CO₂ produced. To do this, we used the same experimental setup described previously and shown in Fig. 5. While keeping the total volume of water and reactants fixed at 1.5 mL, we studied four water:reactant (by volume) ratios: 1:5, 1:2, 1:1, and 3:2. Three trials were performed for each ratio. The amount of water displaced was recorded every 30 s for 15 min. The results are shown in Fig. 7.

From this experiment, we observe that a tradeoff exists between the total amount of CO₂ produced and the rate at which it is produced, based on the initial volume of water. Too little water leads to longer gas generation times, which would likely be a disadvantage for capsule-based colonoscopy if this caused the procedure to take longer than an average colonoscopy (30–60 min). Too much water, on the other hand, leaves less space for the reactants, and thus, less CO₂ is produced. The 1:2 water to reactants ratio appears to be the best balance among the combinations tested, providing a quick rate of reaction and the most CO₂ produced.

C. Initial Volume Experiment

The final experiment explores how the CO₂ output depends on the total initial volume of reactants and water stored onboard the capsule. The experimental setup shown in Fig. 5 was used in this experiment. We investigated three initial volumes of solution, 1.0, 1.5, and 2.0 mL, mixed at the optimal water to reactants ratio of 1:2 determined in the prior experiment. Three trials were performed at each initial volume. The amount of water displaced was recorded every 30 s for 15 min.

The results are shown in Fig. 8. One can see that the larger the initial volume, the larger the volume of gas produced. The average CO₂ output is also linearly related to the initial volume of solution ($v_{\text{gas}} = 150 v_{\text{reactants}}$, $R^2 = 0.99$). This finding is consistent with the theoretical prediction of the relationship between CO₂ output and initial volume, which is derived from the chemical decomposition equation and is given by

$$\frac{V_{\text{CO}_2}}{V_{\text{tot}}} = \left(\frac{M_{\text{acid}}}{\rho_{\text{acid}}} + 3 \frac{M_{\text{base}}}{\rho_{\text{base}}} \right) R \frac{M_{\text{CO}_2}}{\rho_{\text{CO}_2}} = 147.17 \quad (1)$$

where V_{CO_2} is the volume of CO₂, V_{tot} is the total initial volume of reactants, M is the molar mass, ρ is the density, and R is the molar ratio of base to acid. This linear trend was extrapolated to determine the initial volume of reactants needed to produce desired volumes of CO₂ with water carried onboard the capsule. Results are presented in Table II. In interpreting values on the table, note that the typical volume of a commercial camera pill is approximately 2.47 mL, and that the volume of the Given Imaging, Inc. PillCam Colon is approximately 2.95 mL.

D. Summary/Interpretation of Experimental Results

These experiments, viewed in light of those in Section II, illustrate the feasibility of generating sufficient levels of insufflation from a wireless capsule to enhance visualization and locomotion. As can be seen in Fig. 3, at just 50 mL of inflation, visualization was significantly improved. The same level of insufflation freed the capsule for magnetic locomotion, enabling it to move 67 mm. Fig. 8 shows that even 1 mL of a 1:2 water to reactants ratio of potassium bicarbonate and citric acid can produce 50 mL of CO₂ in less

than 1 min. One can extrapolate (see Table II) that even just 0.5 mL of initial solution would result in more than 50 mL of insufflation.

At 200 mL of insufflation, the entire wall of the intestine is viewable (see Fig. 3(c)) and the capsule is able to magnetically locomote through more than 80% of the colon (see Section II-B). Our experiments suggest that a total initial volume of 1.34 mL (including reactants and water) should be able to provide this amount of insufflation (see Table II). To reach the upper threshold of 450 mL, beyond which we found no visualization benefit to further inflation, 3 mL of initial solution volume would be required.

Given the volumes of commercial capsules such as the Pill-Cam SB (Given Imaging, Inc.) and MAARS capsule [26], it is reasonable to expect a single capsule to be easily able to generate sufficient insufflation to enhance visualization and locomotion. If one wishes to inflate the entire intestine (e.g., at the 450 mL level, or greater), more than one insufflation capsule will be required. This is not problematic, however, since it is reasonable to ask a patient to swallow several pills in sequence.

We note that these benchtop experiments may not capture the effects of pressure applied to the intestine by surrounding tissue. These effects, however, appear to be small, as “the abdomen behaves as a hydraulic system with a normal intraabdominal pressure of about 5–7 mmHg” [27]. This pressure would reduce the volumes of gas delivered by the capsule by less than 1% assuming an ideal gas at constant temperature. This should be noted in interpreting the results in these experiments and the prototype experiments in Section V-A, as they apply to *in vivo* conditions.

V. Insufflation Capsule Prototype

Using the results from the above experiments, we now describe the design of a swallowable capsule that carries water plus reactants onboard. Our capsule prototype (see Figs. 9 and 10) consists of a cylindrical capsule measuring 12 mm in diameter \times 32 mm long with rounded end caps. These dimensions provide an internal volume matching the PillCam Colon, given the 1 mm wall thicknesses we selected to ease assembly. The capsule was made using a 3-D Printer (Objet 30 Pro, Objet Geometries Inc., MA), with polypropylene-like material.

The capsule has two chambers, with a 1 mm thick center divider that separates the upper and lower chambers. The upper chamber has a volume of 1.0 mL, and the lower chamber has a volume of 0.64 mL. The capsule has 28 exhaust ports, each 0.7 mm in diameter, along the upper edge of the lower chamber, to vent CO₂ into the intestine. Two magnetic ball valves located on the center divider at each end of the capsule provide a flow gate for mixing the reactants contained in the two chambers.

The ball magnets (3.2 mm in diameter) are seated in cone-shaped holes (4 mm in diameter on the top of the center divider and 2 mm in diameter on the bottom), and are held in place with a ferromagnetic ring attached to the opposite side of the center divider. Each ball magnet is confined in a small compartment on the top chamber, to enable each of them to be repeatedly opened and closed in the presence of an external magnetic field without colliding with one another. This enables throttled control of liquid flow, which can be used to prevent the reactants from mixing too quickly and generating large pressure spikes, which may cause the ejection of some nonreacted contents through the exhaust ports. In the presence of an external magnetic field, the ball magnets first spin to align their field with the external field, and are then separated from the ferromagnetic ring to open the valve hole, as shown in Fig. 9. Since the magnets are spherical and can spin to the appropriate orientation, the capsule does not have to be in a particular orientation for the valves to open. While the flow of the acid solution does rely on gravity (and thus, pill orientation with the top chamber up

and the bottom chamber down is preferential), the pill can work if it is laying on its side or when it is oriented with one of the ends vertical. Due to the capsule's center of mass being located in the bottom chamber, the capsule tends to roll on its side, preventing it from being oriented directly upside down. Should it become oriented upside down, any slight perturbation (such as that introduced from the external magnetic field) reorients it to a more desirable configuration. When the external magnetic field is removed, the ball magnets are attracted back to the ferromagnetic rings, and the valves are closed, as shown in Fig. 9.

A. Insufflation Capsule Experiments

Two sets of experiments were conducted to evaluate insufflation capsule performance: a first experiment on the benchtop at room temperature, and a second experiment in *ex vivo* intestine in a water bath heated to body temperature. The first experiment used the experimental setup of Section IV, which is shown in Fig. 5. The capsule was filled with 0.78 g (0.36 mL) of potassium bicarbonate powder and 0.9 mL of liquid citric acid solution in the lower and upper chambers, respectively. The citric acid solution was made by dilution with water to the concentration required to obtain a water to reactants ratio of 1:2. The capsule was then placed into the dry, sealed mixing flask. An external magnetic field was used to activate the capsule, and CO₂ production was recorded at 1 min intervals. After 5 min, at which point the reaction appeared to be approaching a steady state, 3 mL of water were injected into the flask to mimic the moist environment of the colon. CO₂ output recording was then continued at the same frequency for an additional 10 min. Three trials of this experiment were performed at room temperature, and the final CO₂ output both before and after the addition of water is shown in Table III.

The second experiment consisted of two *ex vivo* trials using a heated bath, a fiber-optic endoscope, an image acquisition system, and an external magnetic field source for actuating the capsule, as shown in Fig. 11. In order to replicate both the temperature and pressure of a human colon, a porcine large intestine 5.5 cm in diameter was immersed in a bath of water at body temperature (37°C) and constrained with suture to an acrylic sheet with holes in it, to maintain its position underwater in a configuration representative of a human colon. Note that the intestine was sealed, and no water from the bath was able to flow into the intestine. A pattern of nine markers was arranged along the intestine, as previously done for the visualization experiment in Section II-A.

The capsule was then placed inside the intestine, 10 cm past the group of markers furthest from the endoscope, and a robot arm with an attached external magnet was used to activate the capsule. A second, thin piece of acrylic was placed on top of the heated bath in order to limit the displacement caused by the magnetic attraction between the external permanent magnet and the magnets onboard the capsule, much like the skin and adipose tissue of a human would do. The endoscope was placed on the opposite side of the marker rings from the capsule, and was used to observe the level of insufflation provided by the capsule.

In the first trial, an insufflation capsule with the same payload as in the benchtop experiments was placed in the colon. The robot was then used to bring the external magnet 10 cm above the colon to activate the capsule, opening the valves. To verify that the valves could open and close as desired, the external magnet was repeatedly moved away from the setup and back to the activation position, and it was visually observed that insufflation started and stopped as desired. As shown in Fig. 12, the capsule successfully inflated a section of the colon surrounding it, measuring 3.18 cm in diameter × 14.0 cm in length. We observed that distention of the intestine to its full diameter (5.5 cm) was not required to enhance visualization, which is consistent with results obtained in our visualization experiment (Section II-A). The images in Fig. 12 were taken approximately 4 min after the capsule was activated. Based on the dimensions of the inflated colon, we calculated the

volume of CO₂ produced to be approximately 110 mL, which is comparable to the insufflation observed prior to adding the additional 3 mL of water to the glass flask in the benchtop experiments described earlier. With this insufflation level, six markers were clearly visible. We also note that there was very little foam, a byproduct of the reaction, generated by this capsule in the intestine (presumably due to the fact that the gas generated is forced through the orifices), and what little foam was produced did not hamper the ability to view the intestinal lining, as shown in Fig. 12.

To test the ability of multiple insufflation capsules to work in cooperation to inflate the intestine, we conducted a second experiment in which three capsules were used simultaneously in the *ex vivo* colon. The same protocol was used as in the single capsule experiment previously. In this case, the three capsules were close enough in proximity that they were all activated when the external magnetic field was introduced, but were not magnetically joined together when activated. One could also envision, however, moving the external magnet across larger distances if the capsules were further apart, which would cause the capsules to open one after the other. After 1 min, six of the nine markers could be viewed with the appropriate endoscope angle. Fig. 13 shows an endoscope image obtained 4 min after the initial activation, at which time eight of the nine markers were visible. We note that with slight endoscope manipulation, all nine markers could be seen, though there was no single image in which we could see all nine simultaneously. The length of intestine inflated was approximately 33 cm, with a diameter of 3.8 cm, leading to an estimated total CO₂ output of 375 mL.

While the quantities of gas generated in both single and multiple capsule experiments are sufficient to enhance visualization and locomotion in light of the results in Section II, they are lower (approximately 75–90 mL less) than benchtop reaction studies in Section IV would suggest. This might be explained by the possibility of potassium bicarbonate powder being ejected through the exhaust holes before being reacted with the citric acid solution. In this case, our total reactant volume would be lower, which would result in lower CO₂ output. Though we tried to ensure that all of the contents of both chambers were mixed by opening the valves multiple times, it is also possible that the citric acid solution compartment was not completely emptied into the lower chamber housing the potassium bicarbonate. This would also result in a lower volume of reactants, and would lower our expected CO₂ output. In comparing the capsule experiments alone, we observe that the capsules produced approximately 20 mL more in the *ex vivo* tests compared with the benchtop tests. This is likely due to the increase from room temperature to body temperature since the reaction is endothermic.

VI. Conclusion

The experiments and prototype presented in this paper indicate that it is possible to carry a sufficient volume of reactants and water onboard a capsule to provide wireless insufflation useful for enhancing visualization and locomotion in the colon. Future studies will be needed to determine whether this can reduce the false negative rates of wireless capsule endoscopes in colon inspection and provide a screening method that will encourage more people to obtain recommended colon cancer screenings. Future studies will also be needed to determine if such insufflation can act as an adjunct to assist robotic capsules of various designs [13]–[15], [28], but this seems likely, given that robotic capsules are typically tested with endoscope-delivered insufflation assistance. One can easily envision how an insufflation capsule such as ours could be used as part of a multicapsule platform where one or more capsules provide insufflation, while other capsules are used to acquire images, provide diagnostic functions, or deploy therapeutic intervention. With the ability to improve visualization and locomotion, it is likely that wireless insufflation capsules will enhance the

diagnostic capabilities of capsule endoscopes, and propel robotic capsules into an expanding variety of clinical applications.

Acknowledgments

This work was supported in part by Vanderbilt University, the Center for Compact and Efficient Fluid Power under Award #0540834, in part by the National Center for Advancing Translational Sciences under Grant 2 UL1 TR000445-06, and in part by the National Science Foundation under CAREER Award #IIS-1054331 and a Graduate Research Fellowship.

References

1. Toennies JL, Ciuti G, Smith BF, Menciacsi A, Valdastrì P, Webster RJ III. Toward tetherless insufflation of the GI tract. *Proc Int Conf IEEE Eng Med Biol Soc. Aug-Sep;2010* :1946–1949.
2. Toennies JL, Webster RJ III. A wireless insufflation system for capsular endoscopes. *J Med Dev. Jun.2009* 3(2):27514.
3. American Cancer Society. What are the key statistics about colorectal cancer?. 2012 Aug. [Online]. Available: <http://www.cancer.org/Cancer/ColonandRectumCancer/DetailedGuide/colorectal-cancer-key-statistics>
4. Joseph DA, DeGross AS, Hayes NS, Wong FL, Plescia M. The colorectal cancer control program: Partnering to increase population level screening. *Gastroint Endosc. 2011*; 73(3):429–434.
5. Winawer SJ. Colorectal cancer screening. *Best Pract Res Clin Gastroenterol. 2007*; 21:1031–1048. [PubMed: 18070702]
6. Center for Disease Control Prevention. Colorectal cancer: 1 in 3 adults are not being screened. 2011. [Online]. Available: <http://www.cdc.gov/vitalsigns/CancerScreening/>
7. Costamagna G, Shah SK, Riccioni ME, Foschia F, Mutignani M, Perri V, Vecchioli A, Brizi MG, Picciocchi A, Marano P. A prospective trial comparing small bowel radiographs and video capsule endoscopy for suspected small bowel disease. *Gastroenterology. 2002*; 123:999–1005. [PubMed: 12360460]
8. Moglia A, Menciacsi A, Dario P, Cuschieri A. Capsule endoscopy: Progress update and challenges ahead. *Nat Rev Gastroenterol Hepatol. 2009*; 6:353–362. [PubMed: 19434097]
9. Riccioni ME, Urgesi R, Cianci A, Bizzotto R, Spada C, Costamagna G. Colon capsule endoscopy: Advantages, limitations, and expectations. which novelties? *World J Gastroint Endosc. 2012*; 4:99–107.
10. Quirini M, Menciacsi A, Scapellato S, Dario P, Rieber F, Ho CN, Schostek S, Schurr M. Feasibility proof of a legged locomotion capsule for the GI tract. *Gastroint Endosc. 2008*; 67:1153–1158.
11. Ciuti G, Valdastrì P, Menciacsi A, Dario P. Robotic magnetic steering and locomotion of microsystems for diagnostic and surgical endoluminal procedures. *Robotica. 2010*; 28:199–207.
12. East JE, Bassett P, Arebi N, Gibson S-T, Guenther T, SBP. Dynamic patient position changes during colonoscopy withdrawal increase adenoma detection: A randomized, crossover trial. *Gastroint Endosc. 2011*; 73(3):456–463.
13. Valdastrì P, Simi M, Webster RJ III. Advanced technologies for gastrointestinal endoscopy. *Annu Rev Biomed Eng. 2012*; 14:397–429. [PubMed: 22655598]
14. Toennies JL, Tortora G, Simi M, Valdastrì P, Webster RJ III. Swallowable medical devices for diagnosis and surgery: The state of the art. *Proc Inst Mech Eng Part C—J Mech Eng Sci. Jul; 2010* 224(7):1397–1414.
15. Twomey K, Marchesi JR. Swallowable capsule technology: Current perspectives and future directions. *Endoscopy. 2009*; 41:357–362. [PubMed: 19340742]
16. Miller KM, Mahoney AW, Schmid T, Abbot JJ. Proprioceptive magnetic-field sensing for closed-loop control of magnetic capsule endoscopes. *Proc IEEE/RSJ Int Conf Intell Robot Syst.* to be published.
17. Yim S, Sitti M. Design and rolling locomotion of a magnetically actuated soft capsule endoscope. *IEEE Trans Robot. Feb; 2012* 28(1):183–194.

18. Zhou H, Alici G, Than TD, Li W. Modeling and experimental investigation of rotational resistance of a spiral-type robotic capsule inside a real intestine. *IEEE/ASME Trans Mechatronics*. to be published.
19. Sliker L, Kern M, Schoen JA, Rentschler ME. Surgical evaluation of a novel tethered robotic capsule endoscope using micropatterned treads. *Surg Endosc*. 2012; 26(10):2862–2869. [PubMed: 22538681]
20. Platt SR, Hawks JA, Rentschler ME. Vision and task assistance using modular wireless in vivo surgical robots. *IEEE Trans Biomed Eng*. Jun; 2009 56(6):1700–1710. [PubMed: 19237337]
21. Walker, R. *Guide to the Human Body*. Potts, J., editor. Richmond Hill, Canada: Firefly Books Ltd; 2004.
22. Schindler AE, Schneider JA, Obstein KL. Foaming at the mouth: Ingestion of 35% hydrogen peroxide solution (with video). *Clin Gastroenterol Hepatol*. 2012; 2:e13–e14. [PubMed: 21982964]
23. FDA Database of Select Committee on GRAS Substances (SCOGS) Reviews. 2012 Jul. [Online]. Available: <http://www.accessdata.fda.gov/scripts/fcn/fcnNavigation.cfm?rpt=scogs>
24. Noori N, Zadeh KK, Kovesdy CP, Murali SB, Bross R, Nissenson AR, Kopple JD. Dietary potassium intake and mortality in long-term hemodialysis patients. *Amer J Kidney Disord*. 2010; 56:338–347.
25. Hussein AM, Bartram CI, Williams CB. Carbon dioxide insufflations for more comfortable colonoscopy. *Gastroint Endosc*. 1984; 30(2):68–70.
26. Matesy GmbH. MAARS (Magnetic Active Agent Release System) Capsule. 2012 Jul. [Online]. Available: Pharmagnetic. www.pharmagnetic.de/background.htm
27. Keulenaer BLD, Waele JJD, Powell B, Malbrain MLNG. What is normal intra-abdominal pressure and how is it affected by positioning, body mass and positive end-expiratory pressure? *J Intens Care Med*. 2009; 35(6):969–976.
28. Valdastrì P, Quaglia C, Susilo E, Menciassi A, Dario P, Ho CN, Anhoeck G, Schurr MO. Wireless therapeutic endoscopic capsule: In vivo experiment. *Endoscopy*. 2008; 40:979–982. [PubMed: 19065478]

Biographies



Jenna L. Gorlewicz (S'08) received the B.S. degree in mechanical engineering from Southern Illinois University Edwardsville, Edwardsville, IL, in 2008. She is currently in the 5th year of the Ph.D. degree in mechanical engineering from Vanderbilt University, Nashville, TN.

Her current research interests include developing novel devices and interfaces in medicine and education.

Ms. Gorlewicz is a National Science Foundation Graduate Research Fellow.



Santina Battaglia received the Master's degree in biomedical engineering from the University of Pisa, Pisa, Italy, in September 2012.

Since January 2012, she has been with the STORM laboratory, Vanderbilt University, Nashville, TN, and she was engaged in the design, fabrication, and testing of a wireless system for GI tract insufflation to promote capsule endoscopy. Her current research interests include medical robotics, biomechatronics, and biomaterials.



Byron F. Smith (S'09) received the B.S. degree in mechanical engineering and the M.S. degree in engineering from Virginia Commonwealth University, Richmond, in 2005 and 2008, respectively.

He is currently a Project Engineer at Dynamic Structures and Materials, Franklin, TN and a Research Assistant at the Vanderbilt STORM laboratory, Nashville, TN. His research interests include precision motion, medical robotics, optical robotics, and commercialization of emerging technologies.



Gastone Ciuti (S'09) received the Master's degree (Hons.) in biomedical engineering from the University of Pisa, Pisa, Italy, in 2008, and the Ph.D. degree from the Scuola Superiore Sant'Anna (SSSA), Pisa, in 2011.

He is currently a Postdoctoral Research Fellow with the BioRobotics Institute of SSSA. His research interests include teleoperated magnetic-based robotic platforms for navigation, localization, and tracking of smart and innovative devices in advanced capsule endoscopy and cardiovascular surgery and wearable physiological monitoring devices and telemetry systems.



Jason Gerding received the B.A. degree in biology and chemistry from the University of Colorado, Boulder, in 2007. He is currently working toward the Ph.D. degree in chemistry at Vanderbilt University, Nashville, TN.

His current research interest includes the study of organic liquid crystalline semiconductors.



Arianna Menciasci (M'00) received the Master's degree (Hons.) in physics from the University of Pisa, Pisa, Italy, in 1995 and the Ph.D. degree from the Scuola Superiore Sant'Anna (SSSA), Pisa, in 1999.

She is currently an Associate Professor of biomedical robotics with SSSA. Her research interests include the study and development of biomedical miniature robots and devices for surgery and diagnosis, with a special attention to combine bioengineering, microtechnologies, and robotics for pursuing a novel paradigm for targeted therapy.



Keith L. Obstein is a graduate of the Whiting School of Engineering, Johns Hopkins University, Baltimore, MD, and received the M.D. degree from Northwestern University Medical School, Chicago, IL in 2004, and the M.P.H. degree from the Harvard University School of Public Health, Boston, MA.

He completed his Residency in Internal Medicine at the Hospital of the University of Pennsylvania in Philadelphia, PA, followed by a Fellowship in Gastroenterology at the Brigham and Women's Hospital, Boston, MA. He is an Assistant Professor of Medicine in the Division of Gastroenterology, Hepatology, and Nutrition at Vanderbilt University Medical Center. He is an active clinician with a focus on General Gastroenterology. His research interests include the areas of Image Guided Technology, New Technologies, Device Development, Endoscopic Training, and Healthcare Quality Improvement.

Dr. Obstein is currently a member of the American Society for Gastrointestinal Endoscopy and the American College of Gastroenterology where he actively serves on the training and public relations committees, respectively.



Pietro Valdastri (M'05) received the Master's (Hons.) degree in electronic engineering from the University of Pisa, Pisa, Italy, in 2002, and the Ph.D. degree in biomedical engineering from the Scuola Superiore Sant'Anna (SSSA), Pisa.

For three years he was an Assistant Professor at the Institute of BioRobotics of SSSA. Since 2011, he has been an Assistant Professor at the Department of Mechanical Engineering, Vanderbilt University, Nashville, TN, where he founded the Science and Technology of Robotics in Medicine (STORM) laboratory. His research interests include robotic endoscopy and robotic surgery, design of magnetic mechanisms, and design of capsule robots for medical applications.



Robert J. Webster, III (S'97–M'08) received the B.S. degree in electrical engineering from Clemson University, Clemson, SC, in 2002, and the M.S. and Ph.D. degrees in mechanical engineering from the Johns Hopkins University, Baltimore, MD, in 2004 and 2007, respectively.

In 2008, he joined the Faculty of Vanderbilt University, Nashville, TN, as an Assistant Professor of mechanical engineering, where he currently directs the Medical and Electromechanical Design Laboratory. His current research interests include medical robots and devices, image-guided surgery, educational robots and devices, and continuum robotics. Dr. Webster received the IEEE Volz Award for Ph.D. thesis impact as well as the NSF CAREER Award in 2011.

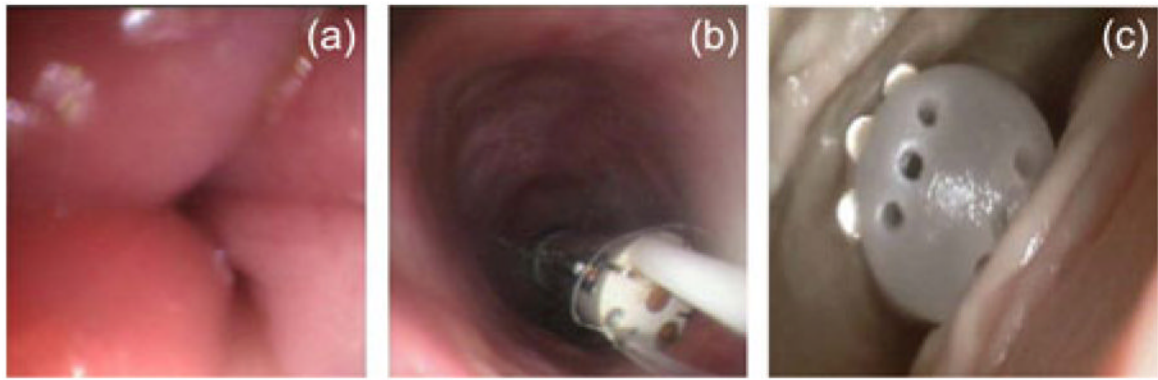


Fig. 1.

(a) Image from a colonoscope of the colon prior to insufflation. (b) Image after insufflation illustrating the ability to view a larger portion of the intestinal surface. Also pictured is a capsule robot with legs [10]. (c) Magnetically actuated capsule [11] whose motion is impeded by the collapsed intestinal folds.



Fig. 2. Experimental setup for determining how much insufflation is required to improve visualization in the large intestine. *Ex vivo* porcine intestine was arranged in a phantom model to simulate the shape of the human colon within the abdomen.

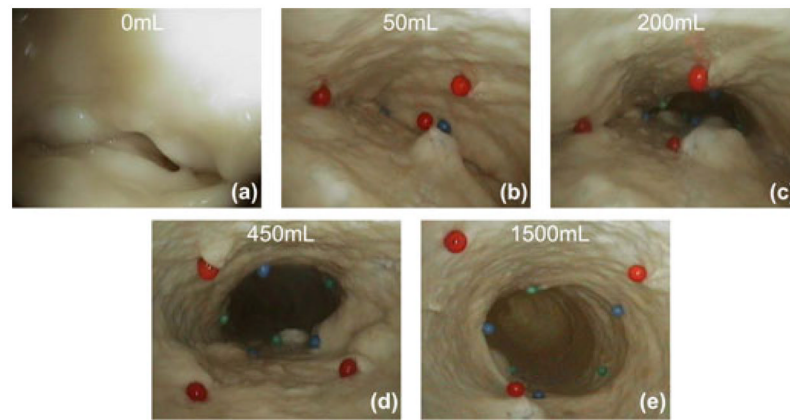


Fig. 3. Results of the colon inflation experiment pictured in Fig. 2. (a) Intestine in its deflated state with no markers visible. (b) With just 50 mL of insufflation, four of the nine markers became visible. (c) At 200 mL, all nine markers first came into the field of view. (d) Threshold above which all nine markers were consistently visible was 450 mL. (e) Intestine in its fully inflated state at 1500 mL of insufflation.

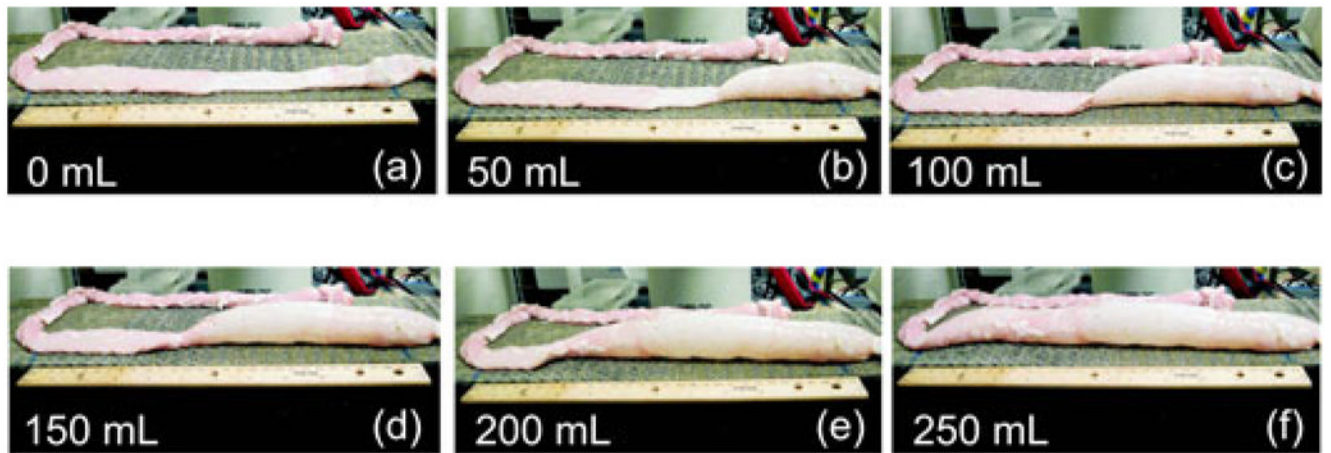


Fig. 4.

Results of the locomotion experiment at different inflation increments. (a) Intestine in its deflated state, where no capsule motion was possible. (b) With just 50 mL of insufflation, the capsule moved an average distance of 67 mm. (c) At 100 mL, the capsule moved an average distance of 150 mm. (d) At 150 mL, the capsule moved an average distance of 188 mm. (e) At 200 mL, the capsule moved an average distance of 243 mm. (f) At 250 mL, the capsule was able to move the entire length of the colon (300 mm), with an average distance of 295 mm.

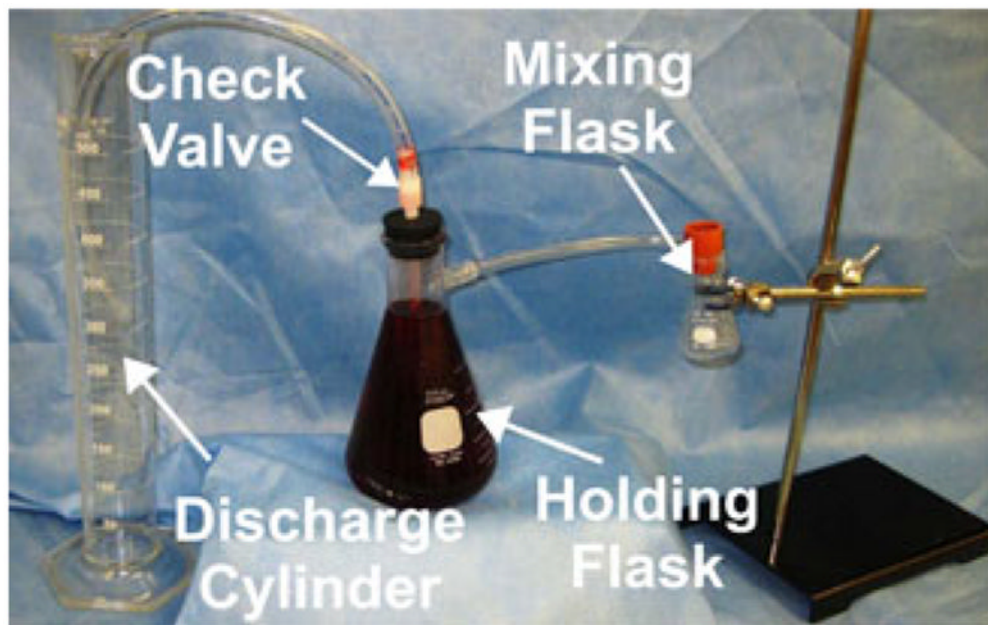


Fig. 5. Experimental setup for reacting known volumes of the base, the acid, and water to measure carbon dioxide production. The powdered acid and base were placed into the flask, and water was added through a syringe to start the reaction. The gas generated displaced water in the holding flask which was measured in a graduated cylinder.

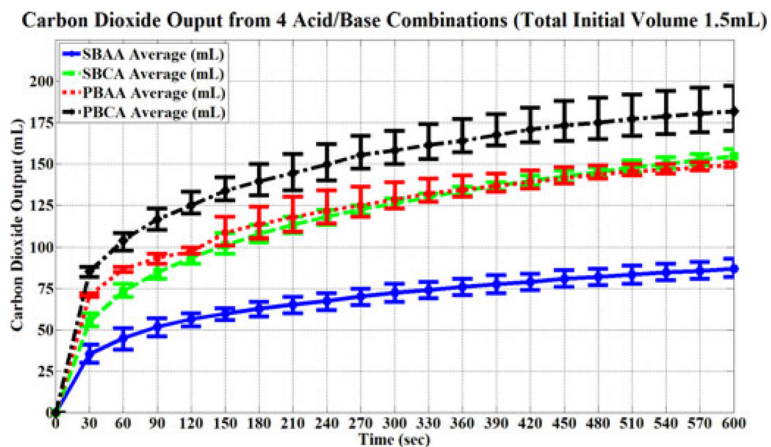


Fig. 6. Carbon dioxide generated by the four combinations of potassium bicarbonate (PB), sodium bicarbonate (SB), acetic acid (AA), and citric acid (CA). The average output is presented as a line, and the minimum and maximum values are presented with error bars. From this, we observe that the PB+CA reaction generated the most gaseous output.

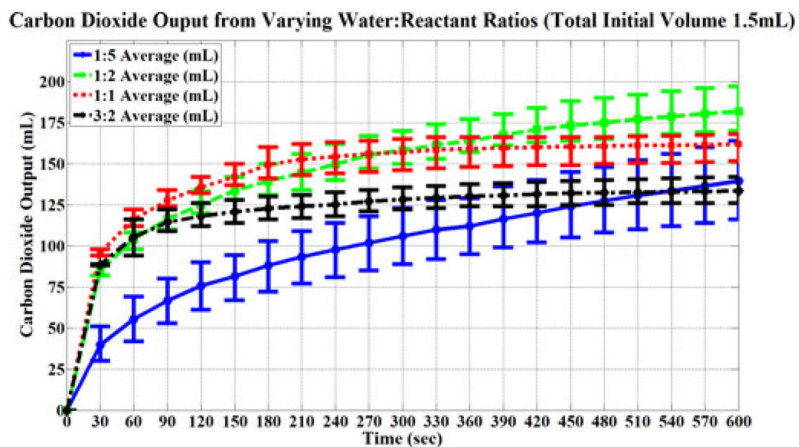


Fig. 7. Carbon dioxide generated by varying ratios of water to reactants for potassium bicarbonate and citric acid. The average output is presented as a line, and the maximum and minimum values are presented with error bars. From this, we observe that the 1:2 water:reactant ratio produced the most gaseous output.

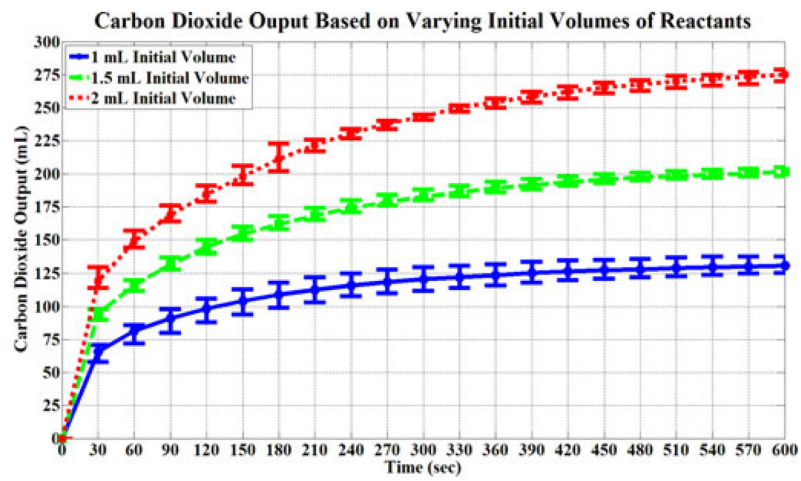


Fig. 8. Carbon dioxide produced by varying total initial volumes of reactants (potassium bicarbonate, citric acid, and water). The average output is presented as a line, and the maximum and minimum values are presented with error bars. From this, we observe that a larger initial volume produces a larger gaseous output, following a linear relationship.

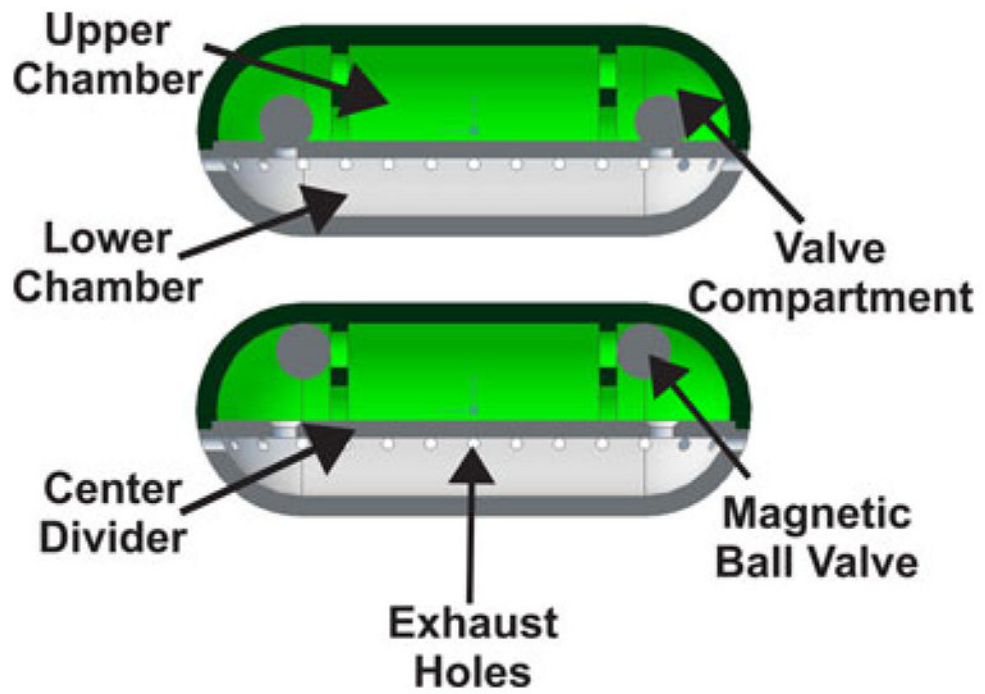


Fig. 9.
Cross section views of the capsule in its closed (top) and opened (bottom) state.

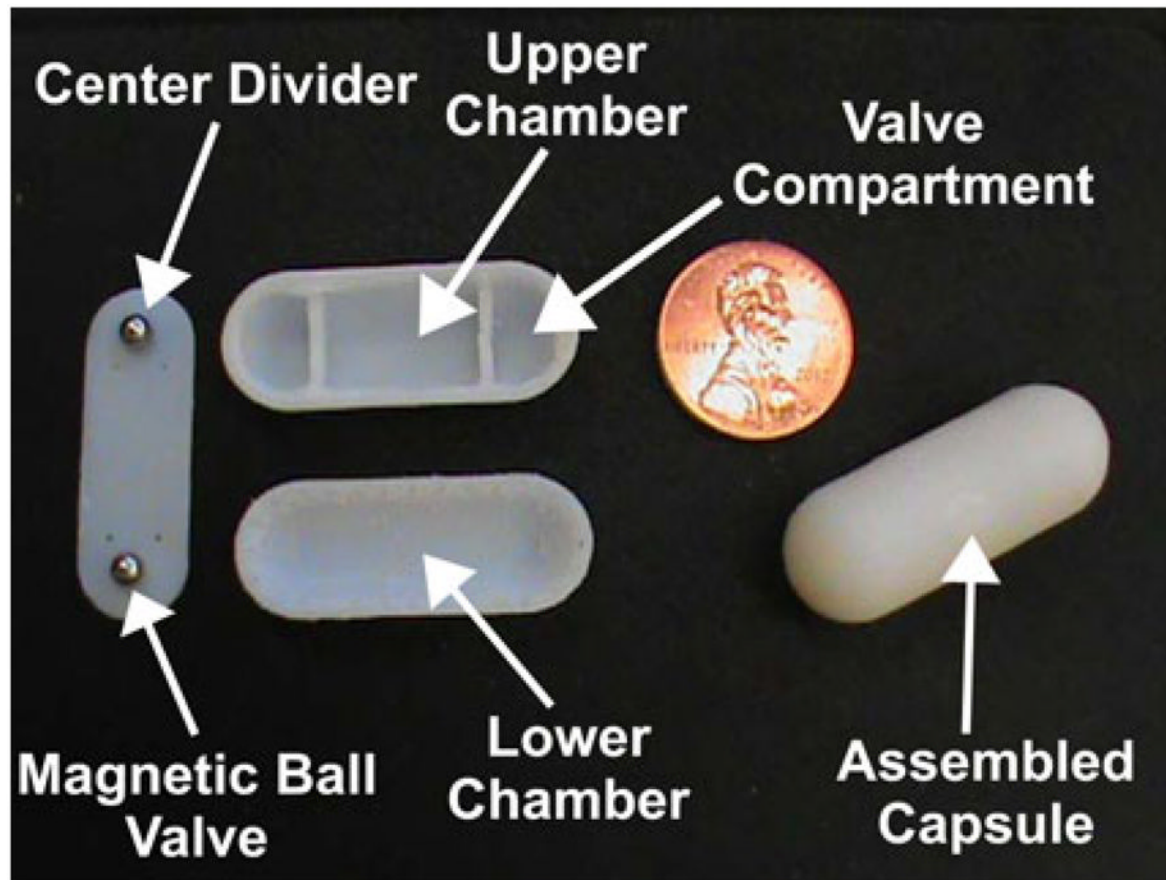


Fig. 10. Capsule prototype and its components. The upper chamber is designed to hold the acid solution, while the lower chamber holds the powdered base. In the presence of an external magnetic field, the two magnetic ball valves move toward the top of the upper chamber, and the citric acid solution mixes with the potassium bicarbonate. The CO_2 produced is vented through small perforated holes just under the midline of the capsule.

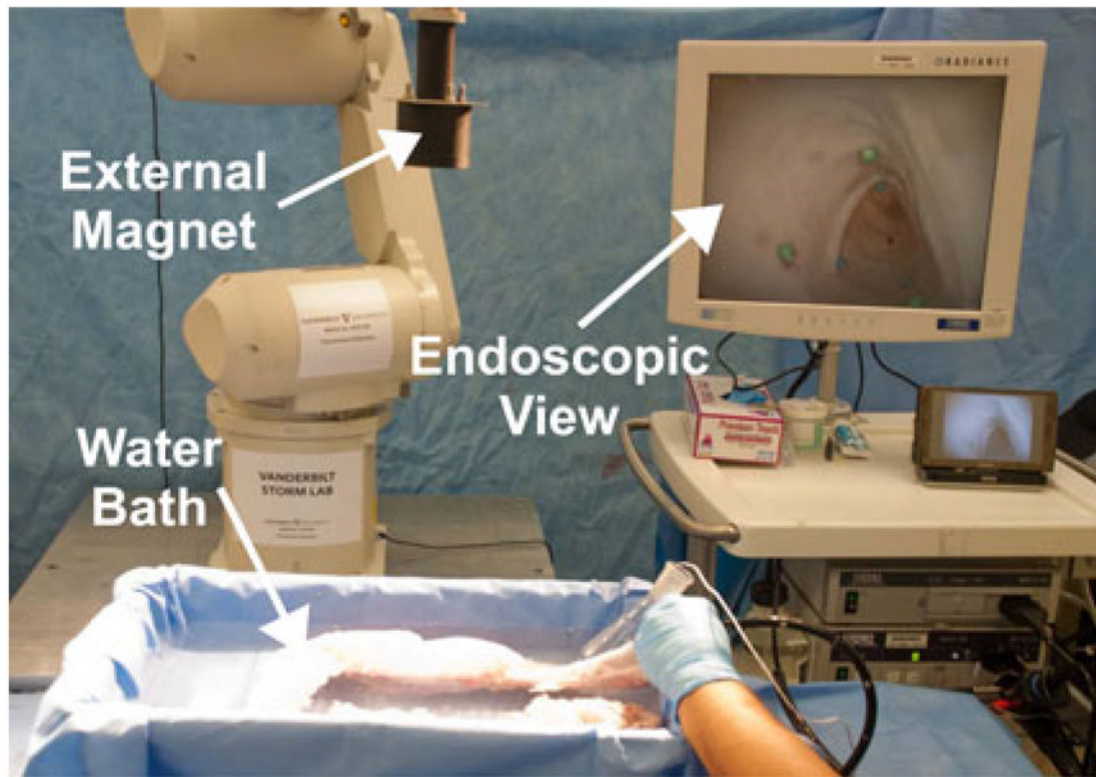


Fig. 11. Experimental setup for *ex vivo* insufflation capsule experiments, consisting of a heated water bath, an endoscope, and an external magnet attached to a robotic arm.

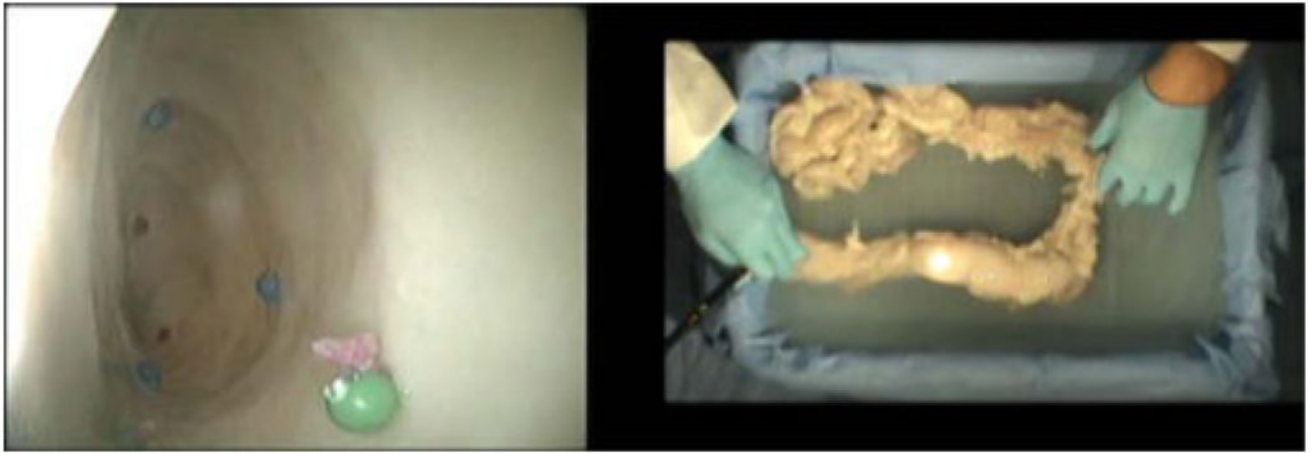


Fig. 12. Endoscopic view (left) and external view (right) demonstrating the level of insufflation provided by a single internal reaction capsule approximately 4 min after activation, at which point six of the nine markers were visible.

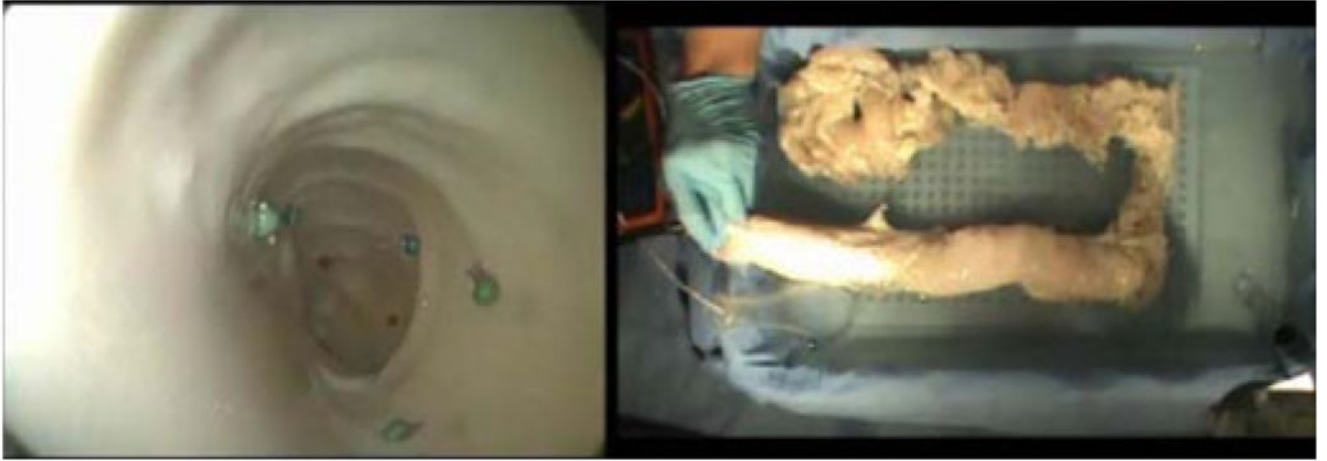


Fig. 13. Endoscopic view (left) and external view (right) demonstrating the level of insufflation provided by three internal reaction capsules approximately 4 min after the initial activation. At this point, eight of the nine markers were visible on the intestinal wall.

TABLE I

The Number of Markers Visible at Selected Inflation Volumes

Gas (mL)	0	50	100	200	300	350	400	450	...	1500
Markers	0	4	5	9	7	9	7	9	...	9

TABLE II

Volume of Reactants Required for Various Insufflation Levels, Extrapolated from Experiments in Section IV-C

CO_2 (mL)	Reactants + Water (mL)
50	0.33
100	0.67
150	1.00
200	1.34
250	1.67
300	2.00
350	2.34
400	2.67
450	3.00
1500	10.02

TABLE III

Total CO₂ Production in Room Temperature Benchtop Experiments With the Prototype Insufflation Capsule Before and After the Addition of 3 mL of Water

Trial	CO ₂ Before H ₂ O(mL)	CO ₂ After H ₂ O (mL)
1	91	167
2	88	156
3	102	168
Mean	94	164